

WELLSITE GEOLOGIST'S REPORT

J. R. Husted
Consulting Geologist



Scale 1:240 (5"=100') Imperial
Measured Depth Log

Well Name: **ScottClark,JR.GST Trust No. 1-25**
Location: **SEC-25-T20S-R16W**
License Number: **15-145-21-743-0000**
Spud Date: **DEC-11-2012**
Surface Coordinates: **1585'FSL,1120' FEL,65'S.,130'W. OF SW NE SE**

Region: **Pawnee Co**
Drilling Completed: **DEC 21-2013**

Bottom Hole: **VERTICAL**
Ground Elevation (ft): **2029'**
Logged Interval (ft): **1850'**
Formation: **LANSING/KS., ARBUCKLE**
Type of Drilling Fluid: **STARCH/CHEMICAL**

K.B. Elevation (ft): **2037'**
Total Depth (ft): **3950'**

Printed by WellSight Log Viewer from WellSight Systems 1-800-447-1534 www.WellSight.com

ROCK TYPES

Anhy	Gyp	Shgy	Sandy
Bent	Igne	Siltst	Silt
Brec	Lmst	Ss	Siltstn
Bioclst	Meta	Till	Slystls
Cht	Mrfst	Carb sh	Slysh
Clyst	Salt	Dol	Lms
Coal	Shale	Dtd	
Congl	Shcol	Gry sh	
Dol			

ACCESSORIES

Algae	Argbrn	Salt	Dol
Amph	Arg	Sandy	Grysit
Belm	Bent	Silt	Lms
Bioclst	Bit	Sulphur	Sandylys
Brach	Brefrac	Tuff	Sh
Cephal	Calc	Chlorite	Siltstn
Coral	Carb	Dol	
Crin	Chtdk	Sand	
Echin	Chtlt	Silty	
Fish	Dol		
Foram	Feldspar	STRINGER	
Fossil	Ferrpel	Anhy	
Gastro	Ferr	Arg	
Oolite	Glaup	Bent	
Pellet	Gyp	Coal	
Pisolite	Hvymn	Dol	
Plant	Kaol	Ls	
Strom	Marl	Mrst	
Fuss	Minxl	Sststrg	
Oornold	Nodule	Ssstrg	
	Phos	Carbsh	
	Pyr	Clystn	

TEXTURE

Boundst
Chalky
Cryxln
Earthy
Finexln
Graint
Lithoxln
Microxln
Mudst
Packst
Wackest

OPERATOR

Company: **F.G. HOLL COMPANY**
Address: **9431 E. CENTRAL STE 100 WICHITA, KANSAS 67206**

GEOLOGIST

Name: **RENE HUSTEAD**
Company: **HUSTEAD EXPLORATION**
Address: **600 N. WOODWOOD ST GARDNER, KANSAS 66030**

DRILLING CONTRACTOR

DUKE RIG #2 DOUBLE DERRICK;DP-4.5 X H(20)';DC 6.25" X 2.25" X 480.73 FT; KELLY BUSHING 8 FT ABOVE GROUND LEVEL;DION VASQUEZ (TOOL-PUSHER)

SURFACE CASING

Surface casing 8 5/8 inches set at 1030' with 400 sacks of cement
Production casing 5 1/2 inches set at 3941' with 200 sacks of cement

GAS DETECTION

ANALOG UNIT MBC INC HW/CHROM (FROM 1600' TO 3950')

CIRCULATION SYSTEM

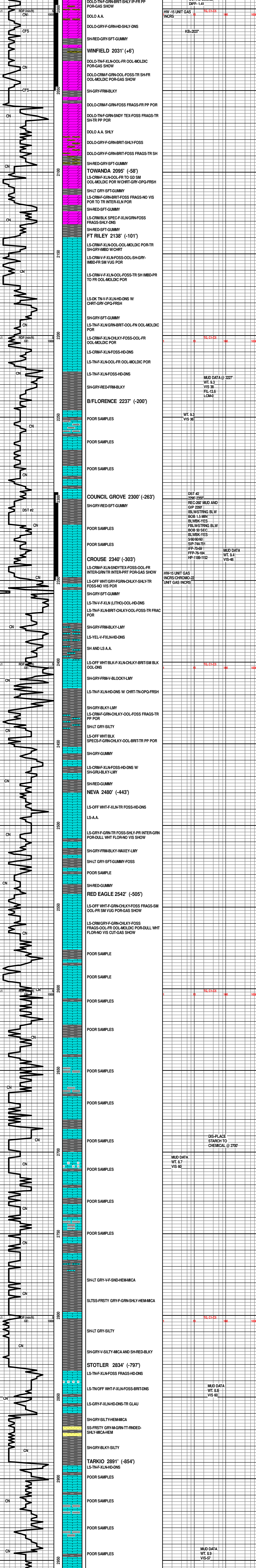
MUD PUMP NATIONAL K 500 A;BB/STRK .129; STK/MIN 60;BB/MIN 7.8;GAL/MIN 126;EARTH PITS;MUD CO SERVICE INC-RIICK HUGHES/JASON WHITING-1-620-752-5425

ELECTRIC LOGS

DUAL COMPENSATED POROSITY;MICRO LOG;DUAL INDUCTION LOG;FRAC FINDER; BORE HOLE COMPENSATED;SONIC LOG;MICRO RESISTIVITY LOG

COMPLETION

PRODUCTION CASING SET ON ARBUCKLE



MUD DATA @ 2227'

WT. 9.3
VIS 38
FIL-13.6
LCM-0

MUD DATA @ 2227'

WT. 9.3
VIS 38
FIL-13.6
LCM-0

MUD DATA @ 2227'

WT. 9.3
VIS 38
FIL-13.6
LCM-0

MUD DATA @ 2227'

WT. 9.3
VIS 38
FIL-13.6
LCM-0

MUD DATA @ 2227'

WT. 9.3
VIS 38
FIL-13.6
LCM-0

MUD DATA @ 2227'

WT. 9.3
VIS 38
FIL-13.6
LCM-0

MUD DATA @ 2227'

WT. 9.3
VIS 38
FIL-13.6
LCM-0

MUD DATA @ 2227'

WT. 9.3
VIS 38
FIL-13.6
LCM-0

MUD DATA @ 2227'

WT. 9.3
VIS 38
FIL-13.6
LCM-0

