



**TRILOBITE TESTING, INC**

# DRILL STEM TEST REPORT

McElvain Energy Inc  
 1050 17th STE 2500  
 Denver, Co 80265  
 ATTN: Rodney Gonzalas

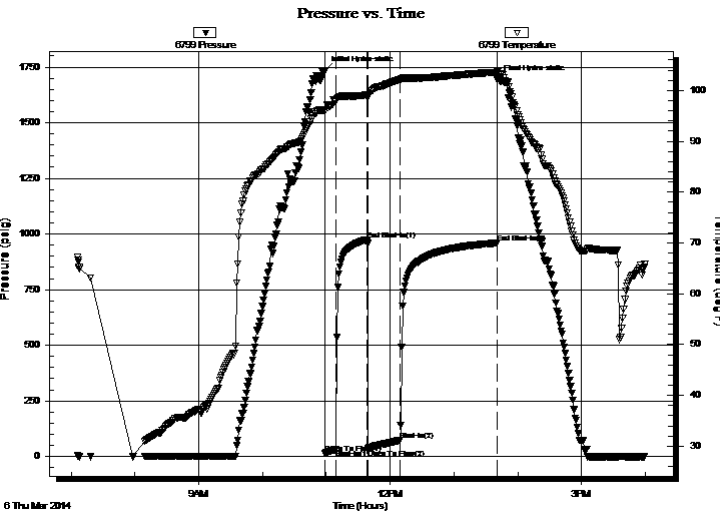
**30-10S-21W Graham**  
**Grecian #30-15**  
 Job Ticket: 56197 **DST#: 2**  
 Test Start: 2014.03.06 @ 07:06:00

## GENERAL INFORMATION:

Formation: **LKC E,F,G**  
 Deviated: No Whipstock: ft (KB)  
 Time Tool Opened: 10:58:30  
 Time Test Ended: 16:04:00  
 Interval: **3584.00 ft (KB) To 3642.00 ft (KB) (TVD)**  
 Total Depth: 3642.00 ft (KB) (TVD)  
 Hole Diameter: 7.88 inches Hole Condition: Good  
 Test Type: Conventional Bottom Hole (Reset)  
 Tester: Tim Phillips  
 Unit No: 73  
 Reference Elevations: 2229.00 ft (KB)  
 2219.00 ft (CF)  
 KB to GR/CF: 10.00 ft

**Serial #: 6799 Inside**  
 Press@RunDepth: 73.20 psig @ 3639.00 ft (KB) Capacity: 8000.00 psig  
 Start Date: 2014.03.06 End Date: 2014.03.06 Last Calib.: 2014.03.06  
 Start Time: 07:06:05 End Time: 15:59:23 Time On Btm: 2014.03.06 @ 10:58:15  
 Time Off Btm: 2014.03.06 @ 13:40:45

**TEST COMMENT:** IFP-Blow built to 5 in  
 ISI-Dead no blow back  
 FF-Blow built to 9 in  
 FSI-Dead no blow back



## PRESSURE SUMMARY

Time (Min.)	Pressure (psig)	Temp (deg F)	Annotation
0	1732.85	96.15	Initial Hydro-static
1	14.01	95.82	Open To Flow (1)
11	31.98	97.81	Shut-In(1)
41	973.81	99.10	End Shut-In(1)
41	34.15	98.97	Open To Flow (2)
71	73.20	102.15	Shut-In(2)
162	959.70	103.56	End Shut-In(2)
163	1695.08	103.95	Final Hydro-static

## Recovery

Length (ft)	Description	Volume (bbl)
131.00	GOWCM 2%G,2%O, 36% W, 60%M	1.84
1.00	OCM 20% O, 80% M	0.01

\* Recovery from multiple tests

## Gas Rates

Choke (inches)	Pressure (psig)	Gas Rate (Mcf/d)



**TRILOBITE TESTING, INC**

# DRILL STEM TEST REPORT

McElvain Energy Inc  
 1050 17th STE 2500  
 Denver, Co 80265  
 ATTN: Rodney Gonzalas

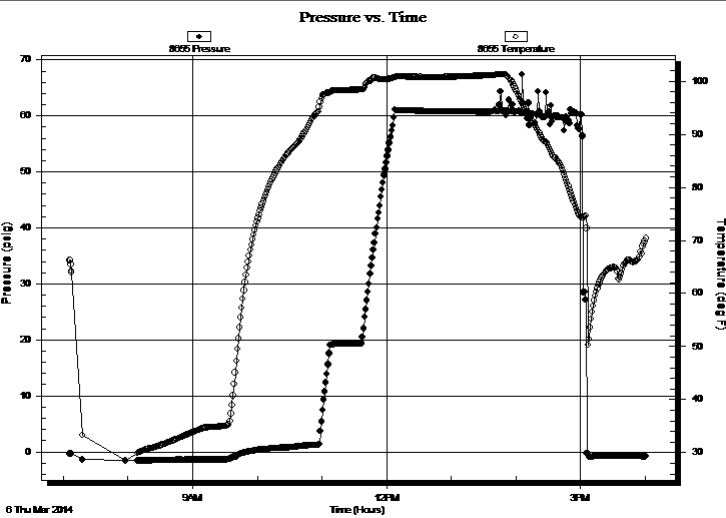
**30-10S-21W Graham**  
**Grecian #30-15**  
 Job Ticket: 56197 **DST#: 2**  
 Test Start: 2014.03.06 @ 07:06:00

## GENERAL INFORMATION:

Formation: **LKC E,F,G**  
 Deviated: No Whipstock: ft (KB)  
 Time Tool Opened: 10:58:30  
 Time Test Ended: 16:04:00  
 Interval: **3584.00 ft (KB) To 3642.00 ft (KB) (TVD)**  
 Total Depth: 3642.00 ft (KB) (TVD)  
 Hole Diameter: 7.88 inches Hole Condition: Good  
 Test Type: Conventional Bottom Hole (Reset)  
 Tester: Tim Phillips  
 Unit No: 73  
 Reference Elevations: 2229.00 ft (KB)  
 2219.00 ft (CF)  
 KB to GR/CF: 10.00 ft

**Serial #: 8655** Fluid  
 Press@RunDepth: psig @ 3550.00 ft (KB) Capacity: 8000.00 psig  
 Start Date: 2014.03.06 End Date: 2014.03.06 Last Calib.: 2014.03.06  
 Start Time: 07:06:05 End Time: 16:00:45 Time On Btm:  
 Time Off Btm:

**TEST COMMENT:** IFP-Blow built to 5 in  
 ISI-Dead no blow back  
 FF-Blow built to 9 in  
 FSI-Dead no blow back



## PRESSURE SUMMARY

Time (Min.)	Pressure (psig)	Temp (deg F)	Annotation

## Recovery

Length (ft)	Description	Volume (bbl)
131.00	GOWCM 2%G,2%O, 36% W, 60%M	1.84
1.00	OCM 20% O, 80% M	0.01

\* Recovery from multiple tests

## Gas Rates

Choke (inches)	Pressure (psig)	Gas Rate (Mcf/d)



**TRILOBITE  
TESTING, INC**

# DRILL STEM TEST REPORT

## FLUID SUMMARY

McElvain Energy Inc  
1050 17th STE 2500  
Denver, Co 80265  
ATTN: Rodney Gonzalas

**30-10S-21W Graham**  
**Grecian #30-15**  
Job Ticket: 56197      **DST#: 2**  
Test Start: 2014.03.06 @ 07:06:00

### Mud and Cushion Information

Mud Type: Gel Chem	Cushion Type:	Oil API:	deg API
Mud Weight: 9.00 lb/gal	Cushion Length: ft	Water Salinity:	ppm
Viscosity: 53.00 sec/qt	Cushion Volume: bbl		
Water Loss: 6.00 in <sup>3</sup>	Gas Cushion Type:		
Resistivity: ohm.m	Gas Cushion Pressure: psig		
Salinity: 1200.00 ppm			
Filter Cake: 1.00 inches			

### Recovery Information

Recovery Table

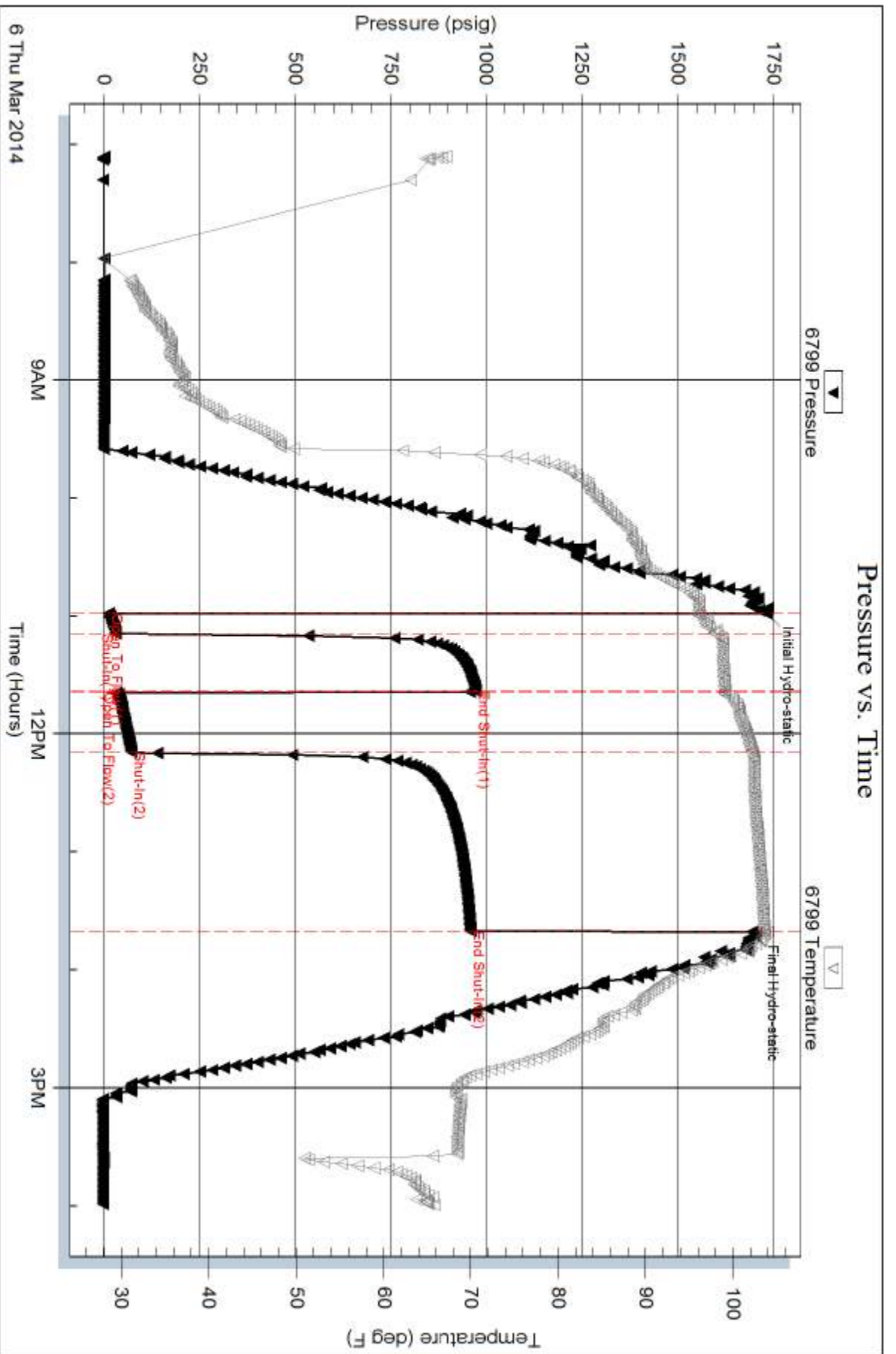
Length ft	Description	Volume bbl
131.00	GOWCM 2%G,2%O, 36% W, 60%M	1.838
1.00	OCM 20% O, 80% M	0.014

Total Length: 132.00 ft      Total Volume: 1.852 bbl

Num Fluid Samples: 0      Num Gas Bombs: 0      Serial #:

Laboratory Name:      Laboratory Location:

Recovery Comments: Sampler: 2000 ml OCM @ 50 psi



Serial #: 8655

Fluid

McEvain Energy Inc

Greclan #30-15

DST Test Number: 2

