



TEMPORARY ABANDONMENT WELL APPLICATION

All blanks must be complete

OPERATOR: License# _____
Name: _____
Address 1: _____
Address 2: _____
City: _____ State: _____ Zip: _____ + _____
Contact Person: _____
Phone: (_____) _____
Contact Person Email: _____
Field Contact Person: _____
Field Contact Person Phone: (_____) _____

API No. 15- _____
Spot Description: _____
____ - ____ - ____ - ____ Sec. _____ Twp. _____ S. R. _____ E W
_____ feet from N / S Line of Section
_____ feet from E / W Line of Section
GPS Location: Lat: _____, Long: _____
(e.g. xx.xxxxx) (e.g. -xxx.xxxxx)
Datum: NAD27 NAD83 WGS84
County: _____ Elevation: _____ GL KB
Lease Name: _____ Well #: _____
Well Type: (check one) Oil Gas OG WSW Other: _____
 SWD Permit #: _____ ENHR Permit #: _____
 Gas Storage Permit #: _____
Spud Date: _____ Date Shut-In: _____

	Conductor	Surface	Production	Intermediate	Liner	Tubing
Size						
Setting Depth						
Amount of Cement						
Top of Cement						
Bottom of Cement						

Casing Fluid Level from Surface: _____ How Determined? _____ Date: _____
Casing Squeeze(s): _____ to _____ w / _____ sacks of cement, _____ to _____ w / _____ sacks of cement. Date: _____
(top) (bottom) (top) (bottom)
Do you have a valid Oil & Gas Lease? Yes No
Depth and Type: Junk in Hole at _____ (depth) Tools in Hole at _____ (depth) Casing Leaks: Yes No Depth of casing leak(s): _____
Type Completion: ALT. I ALT. II Depth of: DV Tool: _____ w / _____ sacks of cement Port Collar: _____ w / _____ sack of cement
(depth) (depth)
Packer Type: _____ Size: _____ Inch Set at: _____ Feet
Total Depth: _____ Plug Back Depth: _____ Plug Back Method: _____

Geological Data:

Formation Name	Formation Top	Formation Base	Completion Information
1. _____	At: _____	to _____ Feet	Perforation Interval _____ to _____ Feet or Open Hole Interval _____ to _____ Feet
2. _____	At: _____	to _____ Feet	Perforation Interval _____ to _____ Feet or Open Hole Interval _____ to _____ Feet

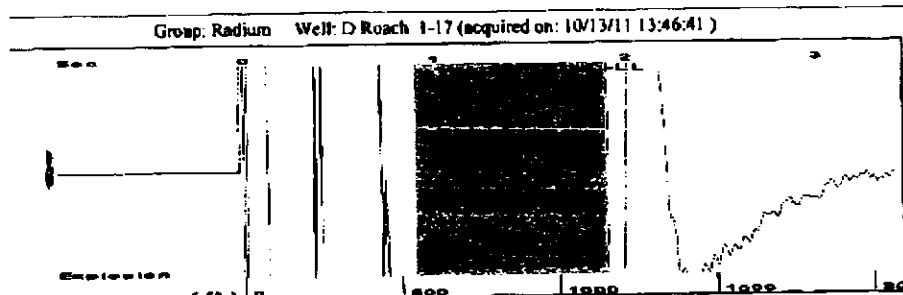
UNDER PENALTY OF PERJURY I HEREBY ATTEST THAT THE INFORMATION CONTAINED HEREIN IS TRUE AND CORRECT TO THE BEST OF MY KNOWLEDGE

Submitted Electronically

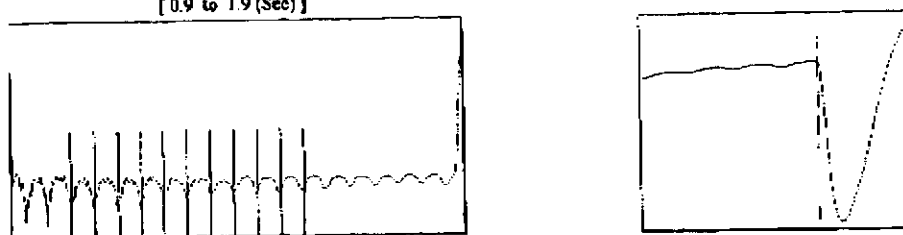
Do NOT Write in This Space - KCC USE ONLY	Date Tested: _____	Results: _____	Date Plugged: _____	Date Repaired: _____	Date Put Back in Service: _____
	Review Completed by: _____ Comments: _____				
TA Approved: <input type="checkbox"/> Yes <input type="checkbox"/> Denied Date: _____					

Mail to the Appropriate KCC Conservation Office:

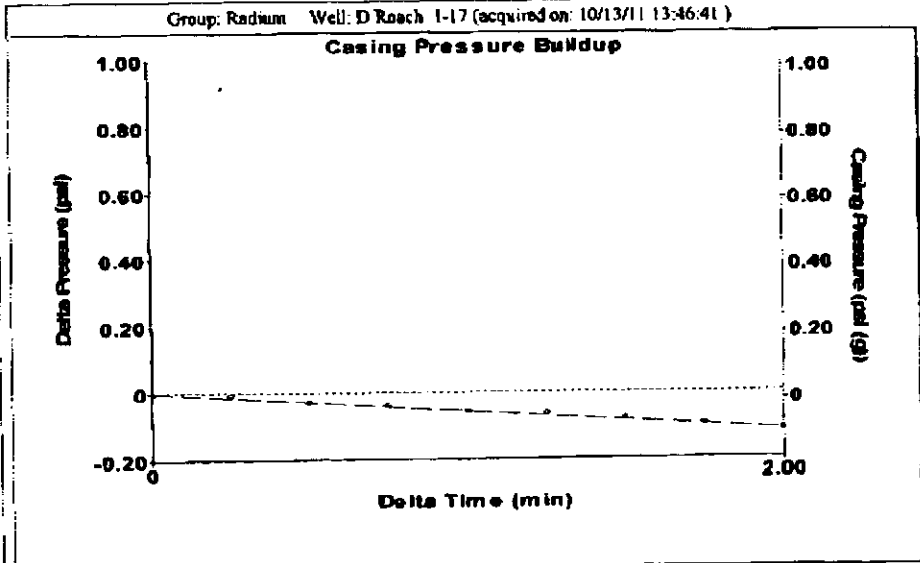
	KCC District Office #1 - 210 E. Frontview, Suite A, Dodge City, KS 67801	Phone 620.225.8888
	KCC District Office #2 / UPGS - 3450 N. Rock Road, Building 600, Suite 601, Wichita, KS 67226	Phone 316.630.4000
	KCC District Office #3 - 1500 SW Seventh Steet, Chanute, KS 66720	Phone 620.432.2300
	KCC District Office #4 - 2301 E. 13th Street, Hays, KS 67601-2651	Phone 785.625.0550



Filter Type High Pass Automatic Collar Count Yes
 Manual Acoustic Velo 1213.87 f/s Manual JTS/sec 19.2678
 Time 1.903 sec
 Joints 36.5962 Jts
 Depth 1152.78 ft



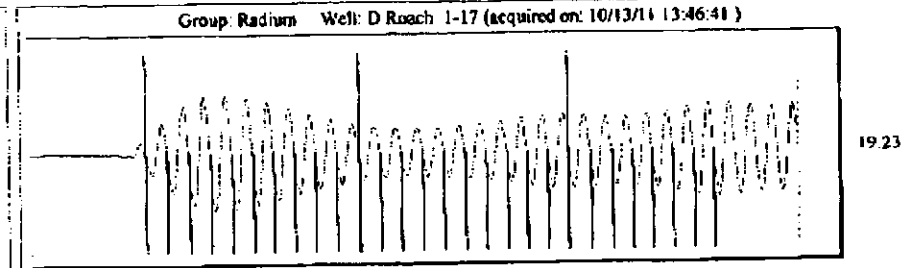
Analysis Method: Automatic



Change in Pressure -0.11 psi PT4493
 Change in Time 2.00 min Range 0-7 psi

Group: Radium Well: D Roach 1-17 (acquired on: 10/13/11 13:46:41)

Production	Potential	Casing Pressure	Producing
Oil -.-	-.- BBL/D	0.0 psi (g)	Annular Gas Flow
Water -.-	-.- BBL/D	Casing Pressure Buildup -0.115 psi	0 Msc/D
Gas -.-	-.- Msc/D	2.00 min	% Liquid 100 %
IPR Method Vogel	Gas/Liquid Interface Pressure 0.5 psi (g)	Liquid Level Depth 1152.78 ft	Pump Intake 773.9 psi (g)
PBHP/SBHP -.-	Pump Intake Depth 3474.00 ft	Pump Intake Depth 3474.00 ft	Producing BHP 773.6 psi (g)
Production Efficiency 0.0	Formation Depth 3473.00 ft	Formation Depth 3473.00 ft	Static BHP -.- psi (g)
Oil 40 deg API	Formation Submergence 2321 ft	Total Gaseous Liquid Column HT (TVD) 2321 ft	Acoustic Velocity 1211.54 f/s
Water 1.05 Sp.Gr.H2O	Equivalent Gas Free Liquid HT (TVD) 2321 ft	Acoustic Test	Joints Per Second 19.2308 jts/sec
Gas 0.77 Sp.Gr.AIR			Depth to liquid level 1152.78 ft
			Automatic Collar Count Yes



Acoustic Velocity 1211.54 f/s Joints counted 27
 Joints Per Second 19.2308 jts/sec Joints to liquid level 36.5962
 Depth to liquid level 1152.78 ft Filter Width 17.2678 21.2678
 Automatic Collar Count Yes Time to 1st Collar 0.288 1.692