



# TEMPORARY ABANDONMENT WELL APPLICATION

OPERATOR: License# \_\_\_\_\_  
 Name: \_\_\_\_\_  
 Address 1: \_\_\_\_\_  
 Address 2: \_\_\_\_\_  
 City: \_\_\_\_\_ State: \_\_\_\_\_ Zip: \_\_\_\_\_ + \_\_\_\_\_  
 Contact Person: \_\_\_\_\_  
 Phone: ( \_\_\_\_\_ ) \_\_\_\_\_  
 Contact Person Email: \_\_\_\_\_  
 Field Contact Person: \_\_\_\_\_  
 Field Contact Person Phone: ( \_\_\_\_\_ ) \_\_\_\_\_

API No. 15- \_\_\_\_\_  
 Spot Description: \_\_\_\_\_  
 \_\_\_\_\_ - \_\_\_\_\_ - \_\_\_\_\_ - \_\_\_\_\_ Sec. \_\_\_\_\_ Twp. \_\_\_\_\_ S. R. \_\_\_\_\_  E  W  
 \_\_\_\_\_ feet from  N /  S Line of Section  
 \_\_\_\_\_ feet from  E /  W Line of Section  
 GPS Location: Lat: \_\_\_\_\_, Long: \_\_\_\_\_  
(e.g. xx.xxxxx) (e.g. -xxx.xxxxx)  
 Datum:  NAD27  NAD83  WGS84  
 County: \_\_\_\_\_ Elevation: \_\_\_\_\_  GL  KB  
 Lease Name: \_\_\_\_\_ Well #: \_\_\_\_\_  
 Well Type: (check one)  Oil  Gas  OG  WSW  Other: \_\_\_\_\_  
 SWD Permit #: \_\_\_\_\_  ENHR Permit #: \_\_\_\_\_  
 Gas Storage Permit #: \_\_\_\_\_  
 Spud Date: \_\_\_\_\_ Date Shut-In: \_\_\_\_\_

	Conductor	Surface	Production	Intermediate	Liner	Tubing
Size						
Setting Depth						
Amount of Cement						
Top of Cement						
Bottom of Cement						

Casing Fluid Level from Surface: \_\_\_\_\_ How Determined? \_\_\_\_\_ Date: \_\_\_\_\_  
 Casing Squeeze(s): \_\_\_\_\_ to \_\_\_\_\_ w / \_\_\_\_\_ sacks of cement, \_\_\_\_\_ to \_\_\_\_\_ w / \_\_\_\_\_ sacks of cement. Date: \_\_\_\_\_  
(top) (bottom) (top) (bottom)  
 Do you have a valid Oil & Gas Lease?  Yes  No  
 Depth and Type:  Junk in Hole at \_\_\_\_\_  Tools in Hole at \_\_\_\_\_ Casing Leaks:  Yes  No Depth of casing leak(s): \_\_\_\_\_  
(depth) (depth)  
 Type Completion:  ALT. I  ALT. II Depth of:  DV Tool: \_\_\_\_\_ w / \_\_\_\_\_ sacks of cement  Port Collar: \_\_\_\_\_ w / \_\_\_\_\_ sack of cement  
(depth) (depth)  
 Packer Type: \_\_\_\_\_ Size: \_\_\_\_\_ Inch Set at: \_\_\_\_\_ Feet  
 Total Depth: \_\_\_\_\_ Plug Back Depth: \_\_\_\_\_ Plug Back Method: \_\_\_\_\_

**Geological Data:**

Formation Name	Formation Top	Formation Base	Completion Information
1. _____	At: _____	to _____ Feet	Perforation Interval _____ to _____ Feet or Open Hole Interval _____ to _____ Feet
2. _____	At: _____	to _____ Feet	Perforation Interval _____ to _____ Feet or Open Hole Interval _____ to _____ Feet

UNDER PENALTY OF PERJURY I HEREBY ATTEST THAT THE INFORMATION CONTAINED HEREIN IS TRUE AND CORRECT TO THE BEST OF MY KNOWLEDGE

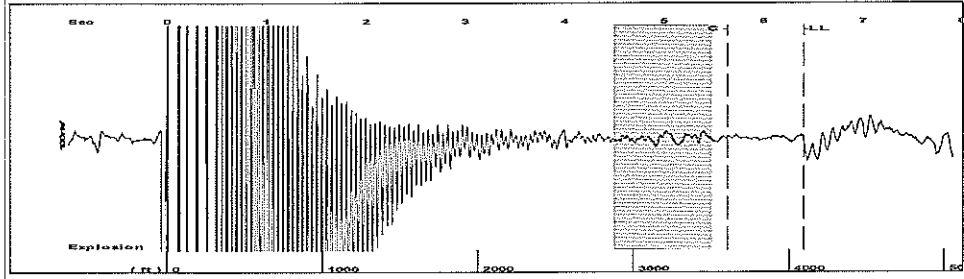
Submitted Electronically

<b>Do NOT Write in This Space - KCC USE ONLY</b>	Date Tested: _____	Results: _____	Date Plugged: _____	Date Repaired: _____	Date Put Back in Service: _____
	Review Completed by: _____ Comments: _____				
TA Approved: <input type="checkbox"/> Yes <input type="checkbox"/> Denied Date: _____					

**Mail to the Appropriate KCC Conservation Office:**

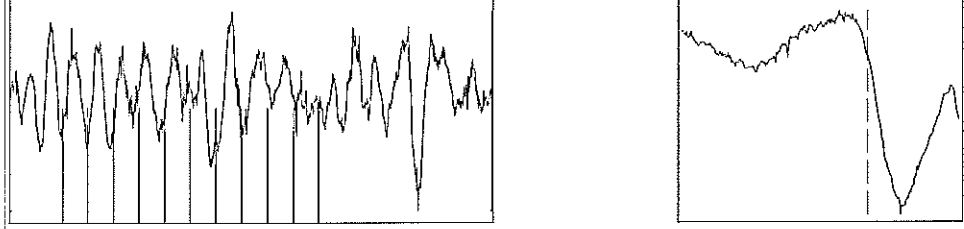
	KCC District Office #1 - 210 E. Frontview, Suite A, Dodge City, KS 67801	Phone 620.225.8888
	KCC District Office #2 / UPGS - 3450 N. Rock Road, Building 600, Suite 601, Wichita, KS 67226	Phone 316.630.4000
	KCC District Office #3 - 1500 SW Seventh Steet, Chanute, KS 66720	Phone 620.432.2300
	KCC District Office #4 - 2301 E. 13th Street, Hays, KS 67601-2651	Phone 785.625.0550

Group: MyWells Well: Light Unit 1 (acquired on: 11/04/13 10:14:07)



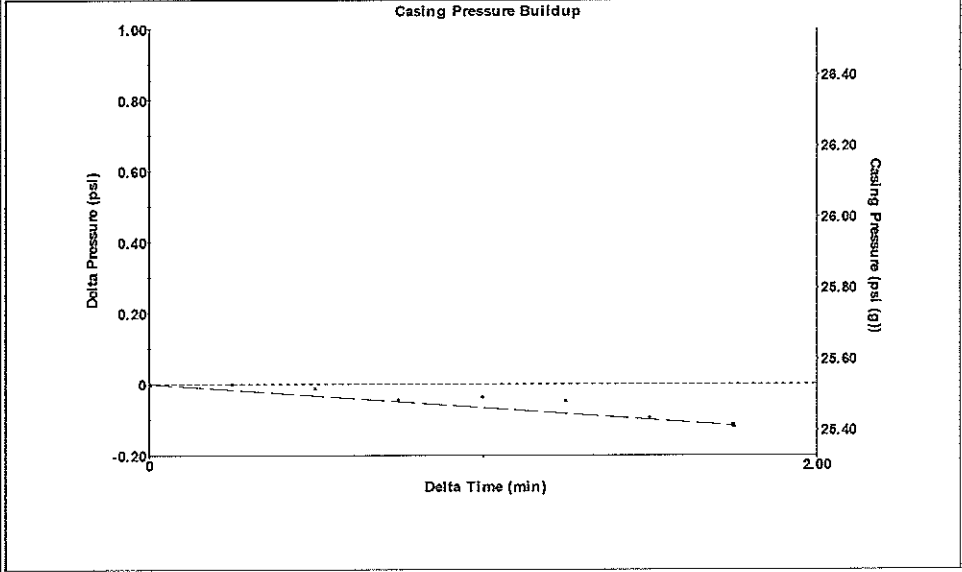
Filter Type High Pass Automatic Collar Count Yes Time 6.405 sec  
 Manual Acoustic Veloc 189.49 ft/s Manual JTS/sec 18.7617 Joints 129.249 Jts  
 Depth 4097.19 ft

[ 4.5 to 5.5 (Sec) ]




Analysis Method: Automatic

Group: MyWells Well: Light Unit 1 (acquired on: 11/04/13 10:14:07)

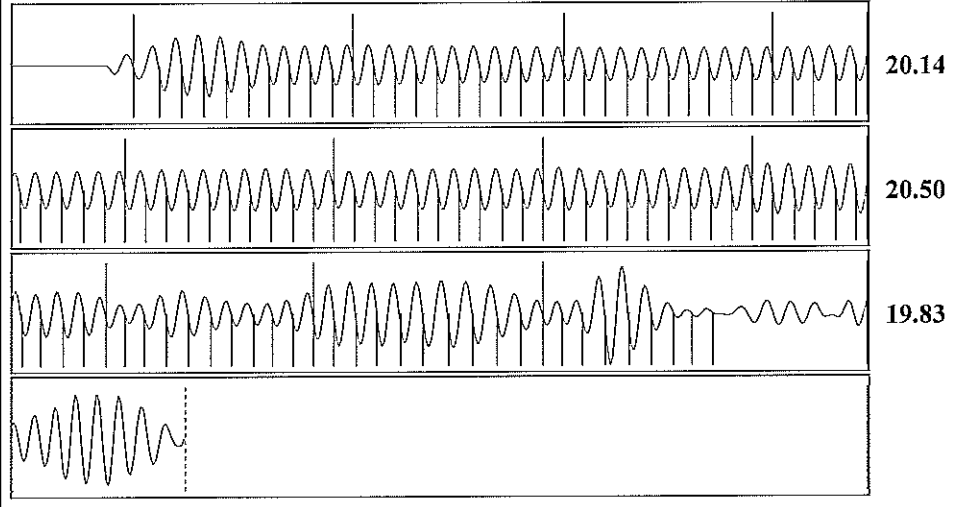


Change in Pressure -0.12 psi PT8720  
 Range 0 - ? psi  
 Change in Time 1.75 min

Group: MyWells Well: Light Unit 1 (acquired on: 11/04/13 10:14:07)

<b>Production</b>	<b>Potential</b>	<b>Casing Pressure</b>		<b>Producing</b>	
Current		25.5 psi (g)			
Oil - * -	- * - BBL/D	Casing Pressure Buildup			Annular
Water - * -	- * - BBL/D	-0.1 psi			Gas Flow
Gas - * -	- * - Mscf/D	1.75 min			0 Mscf/D
IPR Method	Vogel	Gas/Liquid Interface Pressure			% Liquid
PBHP/SBHP	- * -	29.7 psi (g)			100 %
Production Efficiency	0.0	Liquid Level Depth			
Oil 40 deg API		4097.19 ft			
Water 1.05 Sp.Gr.H2O		Pump Intake Depth			
Gas 0.72 Sp.Gr.AIR		4599.00 ft			
Acoustic Velocity	1279.37 ft/s	Formation Depth			
		4530.00 ft			
Formation Submergence				Pump Intake	
Total Gaseous Liquid Column HT (TVD)	502 ft			198.8 psi (g)	
Equivalent Gas Free Liquid HT (TVD)	502 ft			Producing BHP	
				175.7 psi (g)	
Acoustic Test				Static BHP	
				- * - psi (g)	

Group: MyWells Well: Light Unit 1 (acquired on: 11/04/13 10:14:07)



Acoustic Velocity	1279.37 ft/s	Joints counted	108
Joints Per Second	20.1794 jts/sec	Joints to liquid level	129.249
Depth to liquid level	4097.19 ft	Filter Width	16.7617 20.7617
Automatic Collar Count	Yes	Time to 1st Collar	0.284 5.636