



## DRILL STEM TEST REPORT

Prepared For: **Charter Energy Inc**

PO Box 252  
Great Bend KS 67530

ATTN: Jim Musgrove

**FE #1**

**18-18s-13w Barton KS**

Start Date: 2013.09.17 @ 06:08:00

End Date: 2013.09.17 @ 12:04:30

Job Ticket #: 54457                      DST #: 1

Trilobite Testing, Inc  
PO Box 362 Hays, KS 67601  
ph: 785-625-4778 fax: 785-625-5620

Printed: 2013.09.18 @ 09:57:31



**TRILOBITE TESTING, INC.**

# DRILL STEM TEST REPORT

Charter Energy Inc  
 PO Box 252  
 Great Bend KS 67530  
 ATTN: Jim Musgrove

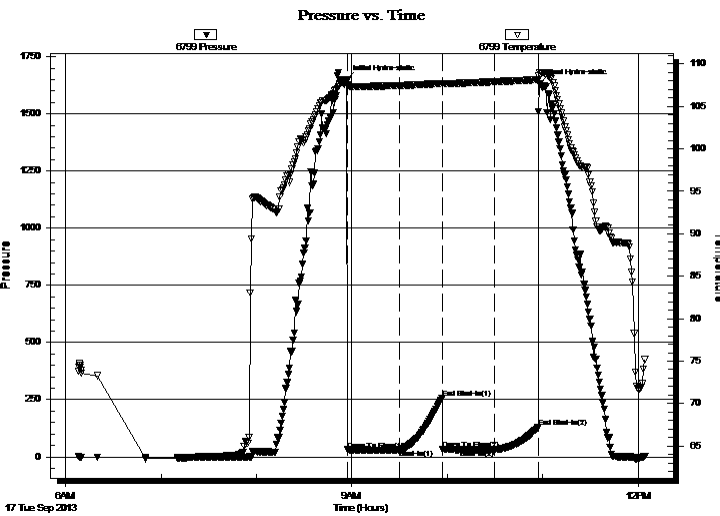
**18-18s-13w Barton KS**  
**FE #1**  
 Job Ticket: 54457 **DST#: 1**  
 Test Start: 2013.09.17 @ 06:08:00

## GENERAL INFORMATION:

Formation: **Arbcukle**  
 Deviated: No Whipstock: ft (KB)  
 Test Type: Conventional Bottom Hole (Initial)  
 Time Tool Opened: 08:57:15 Tester: Cody Bloedorn  
 Time Test Ended: 12:04:30 Unit No: 53  
 Interval: **3324.00 ft (KB) To 3380.00 ft (KB) (TVD)** Reference Elevations: 1873.00 ft (KB)  
 Total Depth: 3380.00 ft (KB) (TVD) 1866.00 ft (CF)  
 Hole Diameter: 7.88 inches Hole Condition: Fair KB to GR/CF: 7.00 ft

**Serial #: 6799 Outside**  
 Press @ RunDepth: 31.35 psig @ 3362.00 ft (KB) Capacity: 8000.00 psig  
 Start Date: 2013.09.17 End Date: 2013.09.17 Last Calib.: 2013.09.17  
 Start Time: 06:08:05 End Time: 12:04:29 Time On Btm: 2013.09.17 @ 08:56:45  
 Time Off Btm: 2013.09.17 @ 10:58:00

**TEST COMMENT:** 30 - IF-1/4" blow , died in 23 Min.  
 30 - IS- No return  
 30 - FF- No blow  
 30 - FS- No return



## PRESSURE SUMMARY

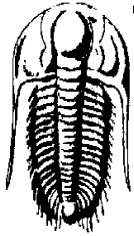
Time (Min.)	Pressure (psig)	Temp (deg F)	Annotation
0	1650.60	108.00	Initial Hydro-static
1	31.02	107.49	Open To Flow (1)
33	32.11	107.44	Shut-In(1)
60	255.75	107.71	End Shut-In(1)
61	34.05	107.66	Open To Flow (2)
93	31.35	107.90	Shut-In(2)
121	129.69	108.14	End Shut-In(2)
122	1632.14	108.93	Final Hydro-static

## Recovery

Length (ft)	Description	Volume (bbl)
4.00	SOCM, 10%O, 90%M	0.06
1.00	Free oil, 100%O	0.01

## Gas Rates

Choke (inches)	Pressure (psig)	Gas Rate (Mcf/d)



**TRILOBITE  
TESTING, INC.**

# DRILL STEM TEST REPORT

**TOOL DIAGRAM**

Charter Energy Inc  
PO Box 252  
Great Bend KS 67530  
ATTN: Jim Musgrove

**18-18s-13w Barton KS**  
**FE #1**  
Job Ticket: 54457      **DST#: 1**  
Test Start: 2013.09.17 @ 06:08:00

**Tool Information**

Drill Pipe:	Length: 3318.00 ft	Diameter: 3.80 inches	Volume: 46.54 bbl	Tool Weight: 2000.00 lb
Heavy Wt. Pipe:	Length: 0.00 ft	Diameter: 0.00 inches	Volume: 0.00 bbl	Weight set on Packer: 30000.00 lb
Drill Collar:	Length: 0.00 ft	Diameter: 0.00 inches	Volume: 0.00 bbl	Weight to Pull Loose: 50000.00 lb
			<u>Total Volume: 46.54 bbl</u>	Tool Chased 0.00 ft
Drill Pipe Above KB:	20.00 ft			String Weight: Initial 46000.00 lb
Depth to Top Packer:	3324.00 ft			Final 46000.00 lb
Depth to Bottom Packer:	ft			
Interval between Packers:	56.00 ft			
Tool Length:	82.00 ft			
Number of Packers:	1	Diameter: 6.75 inches		

Tool Comments: Ran Jars to break apart. No charge for JARS.

Tool Description	Length (ft)	Serial No.	Position	Depth (ft)	Accum. Lengths
Change Over Sub	1.00			3299.00	
Shut In Tool	5.00			3304.00	
Hydraulic tool	5.00			3309.00	
Jars	5.00			3314.00	
Packer	5.00			3319.00	26.00 Bottom Of Top Packer
Packer	5.00			3324.00	
Stubb	1.00			3325.00	
Perforations	5.00			3330.00	
Change Over Sub	1.00			3331.00	
Drill Pipe	31.00			3362.00	
Recorder	0.00	6799	Outside	3362.00	
Recorder	0.00	8655	Inside	3362.00	
Change Over Sub	1.00			3363.00	
Perforations	14.00			3377.00	
Bullnose	3.00			3380.00	56.00 Bottom Packers & Anchor

**Total Tool Length: 82.00**



**TRILOBITE  
TESTING, INC.**

# DRILL STEM TEST REPORT

**FLUID SUMMARY**

Charter Energy Inc  
PO Box 252  
Great Bend KS 67530  
ATTN: Jim Musgrove

**18-18s-13w Barton KS**  
**FE #1**  
Job Ticket: 54457      **DST#: 1**  
Test Start: 2013.09.17 @ 06:08:00

## Mud and Cushion Information

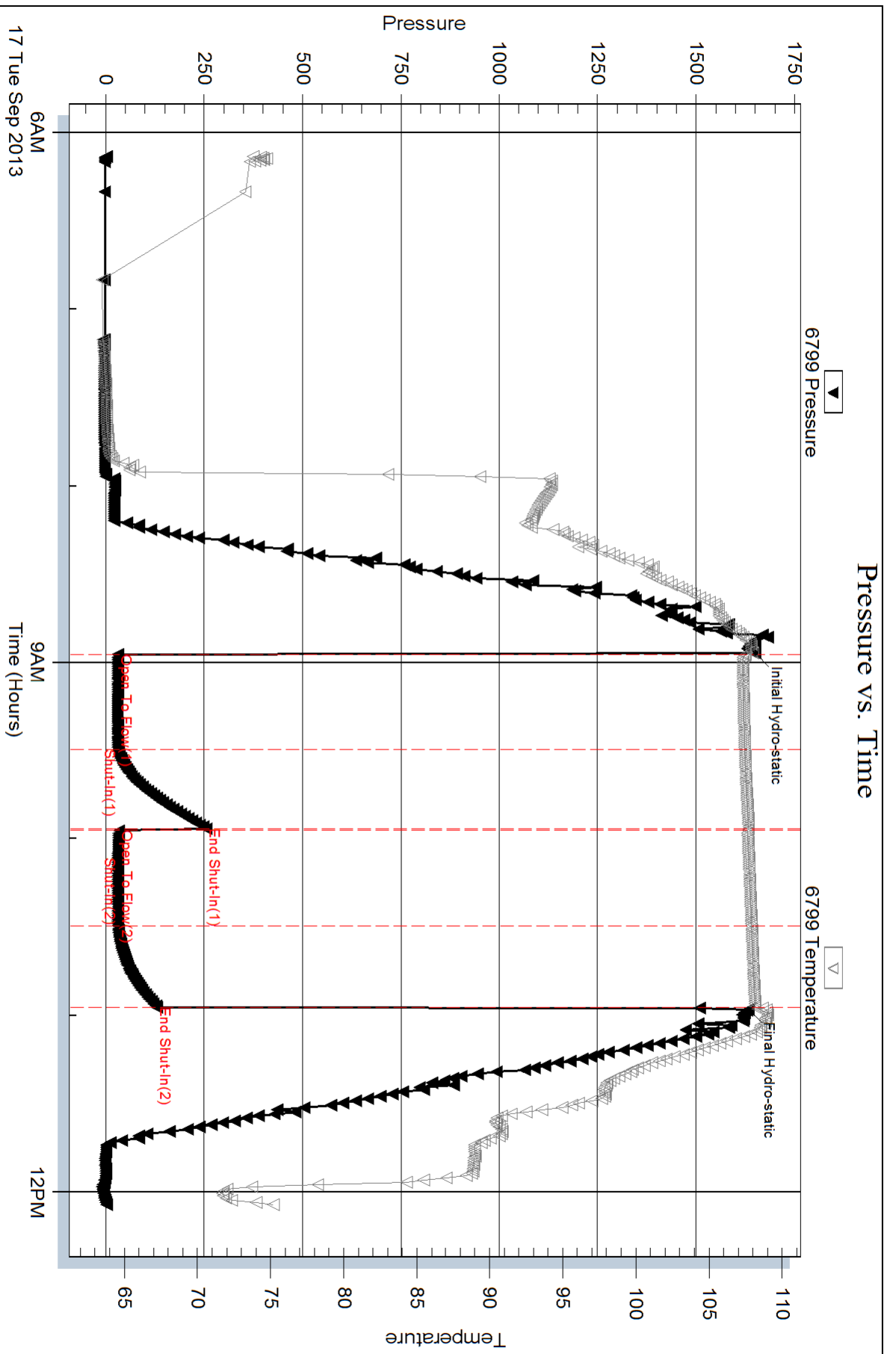
Mud Type: Gel Chem	Cushion Type:	Oil API:	deg API
Mud Weight: 9.00 lb/gal	Cushion Length: ft	Water Salinity:	ppm
Viscosity: 47.00 sec/qt	Cushion Volume: bbl		
Water Loss: 7.96 in <sup>3</sup>	Gas Cushion Type:		
Resistivity: ohm.m	Gas Cushion Pressure: psig		
Salinity: 5300.00 ppm			
Filter Cake: inches			

## Recovery Information

Recovery Table

Length ft	Description	Volume bbl
4.00	SOCM, 10%O, 90%M	0.056
1.00	Free oil, 100%O	0.014

Total Length: 5.00 ft      Total Volume: 0.070 bbl  
 Num Fluid Samples: 0      Num Gas Bombs: 0      Serial #:  
 Laboratory Name:      Laboratory Location:  
 Recovery Comments:





## DRILL STEM TEST REPORT

Prepared For: **Charter Energy Inc**

PO Box 252  
Great Bend KS 67530

ATTN: Jim Musgrove

**FE #1**

**18-18s-13w Barton KS**

Start Date: 2013.09.17 @ 16:30:00

End Date: 2013.09.17 @ 20:55:30

Job Ticket #: 54458                      DST #: 2

Trilobite Testing, Inc  
PO Box 362 Hays, KS 67601  
ph: 785-625-4778 fax: 785-625-5620

Printed: 2013.09.18 @ 09:55:59





**TRILOBITE  
TESTING, INC.**

# DRILL STEM TEST REPORT

**TOOL DIAGRAM**

Charter Energy Inc  
PO Box 252  
Great Bend KS 67530  
ATTN: Jim Musgrove

**18-18s-13w Barton KS**  
**FE #1**  
Job Ticket: 54458      **DST#: 2**  
Test Start: 2013.09.17 @ 16:30:00

**Tool Information**

Drill Pipe:	Length: 3319.00 ft	Diameter: 3.80 inches	Volume: 46.56 bbl	Tool Weight:	2000.00 lb
Heavy Wt. Pipe:	Length: 0.00 ft	Diameter: 0.00 inches	Volume: 0.00 bbl	Weight set on Packer:	30000.00 lb
Drill Collar:	Length: 0.00 ft	Diameter: 0.00 inches	Volume: 0.00 bbl	Weight to Pull Loose:	50000.00 lb
			<u>Total Volume: 46.56 bbl</u>	Tool Chased	0.00 ft
Drill Pipe Above KB:	16.00 ft			String Weight: Initial	46000.00 lb
Depth to Top Packer:	3324.00 ft			Final	46000.00 lb
Depth to Bottom Packer:	ft				
Interval between Packers:	61.00 ft				
Tool Length:	82.00 ft				
Number of Packers:	1	Diameter: 6.75 inches			
Tool Comments:					

<b>Tool Description</b>	<b>Length (ft)</b>	<b>Serial No.</b>	<b>Position</b>	<b>Depth (ft)</b>	<b>Accum. Lengths</b>
-------------------------	--------------------	-------------------	-----------------	-------------------	-----------------------

Change Over Sub	1.00			3304.00	
Shut In Tool	5.00			3309.00	
Hydraulic tool	5.00			3314.00	
Packer	5.00			3319.00	21.00      Bottom Of Top Packer
Packer	5.00			3324.00	
Stubb	1.00			3325.00	
Perforations	5.00			3330.00	
Change Over Sub	1.00			3331.00	
Drill Pipe	31.00			3362.00	
Recorder	0.00	6799	Outside	3362.00	
Recorder	0.00	8655	Inside	3362.00	
Change Over Sub	1.00			3363.00	
Perforations	19.00			3382.00	
Bullnose	3.00			3385.00	61.00      Bottom Packers & Anchor

**Total Tool Length: 82.00**





**TRILOBITE  
TESTING, INC.**

# DRILL STEM TEST REPORT

**FLUID SUMMARY**

Charter Energy Inc  
PO Box 252  
Great Bend KS 67530  
ATTN: Jim Musgrove

**18-18s-13w Barton KS**  
**FE #1**  
Job Ticket: 54458      **DST#: 2**  
Test Start: 2013.09.17 @ 16:30:00

## Mud and Cushion Information

Mud Type: Gel Chem	Cushion Type:	Oil API:	deg API
Mud Weight: 9.00 lb/gal	Cushion Length: ft	Water Salinity:	ppm
Viscosity: 47.00 sec/qt	Cushion Volume: bbl		
Water Loss: 7.96 in <sup>3</sup>	Gas Cushion Type:		
Resistivity: ohm.m	Gas Cushion Pressure: psig		
Salinity: 5300.00 ppm			
Filter Cake: inches			

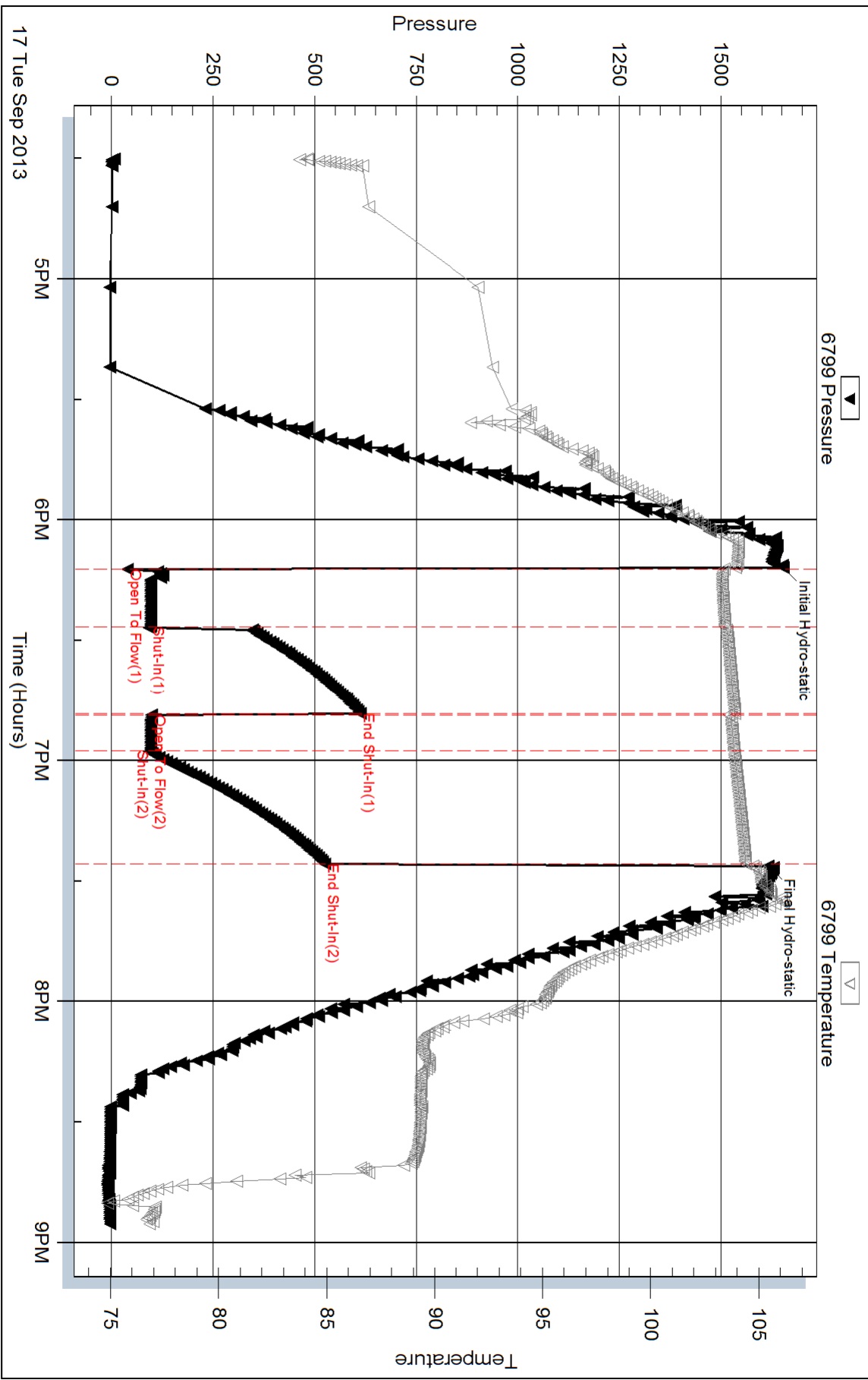
## Recovery Information

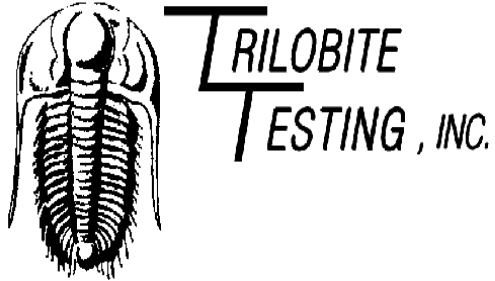
Recovery Table

Length ft	Description	Volume bbl
134.00	Mud, w ith oil spots, 100%M	1.880

Total Length: 134.00 ft      Total Volume: 1.880 bbl  
 Num Fluid Samples: 0      Num Gas Bombs: 0      Serial #:  
 Laboratory Name:      Laboratory Location:  
 Recovery Comments:

### Pressure vs. Time





## DRILL STEM TEST REPORT

Prepared For: **Charter Energy Inc**

PO Box 252  
Great Bend KS 67530

ATTN: Jim Musgrove

**FE #1**

**18-18s-13w Barton KS**

Start Date: 2013.09.18 @ 01:11:00

End Date: 2013.09.18 @ 06:19:30

Job Ticket #: 54459                      DST #: 3

Trilobite Testing, Inc  
PO Box 362 Hays, KS 67601  
ph: 785-625-4778 fax: 785-625-5620

Printed: 2013.09.18 @ 09:55:32



**TRILOBITE TESTING, INC.**

# DRILL STEM TEST REPORT

Charter Energy Inc  
 PO Box 252  
 Great Bend KS 67530  
 ATTN: Jim Musgrove

**18-18s-13w Barton KS**  
**FE #1**  
 Job Ticket: 54459 **DST#: 3**  
 Test Start: 2013.09.18 @ 01:11:00

## GENERAL INFORMATION:

Formation: **Arbuckle**  
 Deviated: No Whipstock: ft (KB)  
 Test Type: Conventional Bottom Hole (Reset)  
 Time Tool Opened: 02:42:00 Tester: Cody Bloedorn  
 Time Test Ended: 06:19:30 Unit No: 53  
 Interval: **3325.00 ft (KB) To 3389.00 ft (KB) (TVD)** Reference Elevations: 1873.00 ft (KB)  
 Total Depth: 3389.00 ft (KB) (TVD) 1866.00 ft (CF)  
 Hole Diameter: 7.88 inches Hole Condition: Fair KB to GR/CF: 7.00 ft

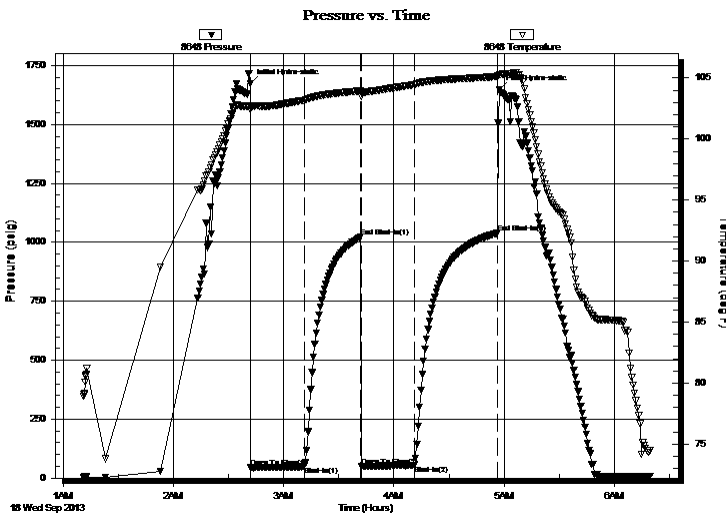
## Serial #: 8648

Inside

Press @ Run Depth: 53.86 psig @ 3363.00 ft (KB) Capacity: 8000.00 psig  
 Start Date: 2013.09.18 End Date: 2013.09.18 Last Calib.: 2013.09.18  
 Start Time: 01:11:05 End Time: 06:19:29 Time On Btm: 2013.09.18 @ 02:41:45  
 Time Off Btm: 2013.09.18 @ 04:57:30

TEST COMMENT: 30 - IF- 1 1/2" blow  
 30 - IS- No return  
 30 - FF- No blow  
 45 - FS- No return

## PRESSURE SUMMARY



Time (Min.)	Pressure (psig)	Temp (deg F)	Annotation
0	1673.03	102.71	Initial Hydro-static
1	43.86	102.39	Open To Flow (1)
30	48.91	103.18	Shut-In(1)
60	1021.57	103.95	End Shut-In(1)
61	50.36	103.46	Open To Flow (2)
90	53.86	104.46	Shut-In(2)
135	1039.29	105.12	End Shut-In(2)
136	1648.66	105.29	Final Hydro-static

## Recovery

Length (ft)	Description	Volume (bbl)
30.00	Mud, with oil spots, 100%M	0.42

\* Recovery from multiple tests

## Gas Rates

Choke (inches)	Pressure (psig)	Gas Rate (Mcf/d)



**TRILOBITE  
TESTING, INC.**

# DRILL STEM TEST REPORT

**TOOL DIAGRAM**

Charter Energy Inc  
PO Box 252  
Great Bend KS 67530  
ATTN: Jim Musgrove

**18-18s-13w Barton KS**  
**FE #1**  
Job Ticket: 54459      **DST#: 3**  
Test Start: 2013.09.18 @ 01:11:00

**Tool Information**

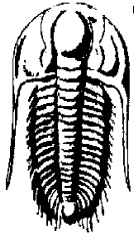
Drill Pipe:	Length: 3404.00 ft	Diameter: 3.80 inches	Volume: 47.75 bbl	Tool Weight: 2000.00 lb
Heavy Wt. Pipe:	Length: 0.00 ft	Diameter: 0.00 inches	Volume: 0.00 bbl	Weight set on Packer: 30000.00 lb
Drill Collar:	Length: 0.00 ft	Diameter: 0.00 inches	Volume: 0.00 bbl	Weight to Pull Loose: 50000.00 lb
			Total Volume: 47.75 bbl	Tool Chased 0.00 ft
Drill Pipe Above KB:	100.00 ft			String Weight: Initial 46000.00 lb
Depth to Top Packer:	3325.00 ft			Final 46000.00 lb
Depth to Bottom Packer:	ft			
Interval between Packers:	64.00 ft			
Tool Length:	85.00 ft			
Number of Packers:	2	Diameter: 6.75 inches		

Tool Comments:

<b>Tool Description</b>	<b>Length (ft)</b>	<b>Serial No.</b>	<b>Position</b>	<b>Depth (ft)</b>	<b>Accum. Lengths</b>
-------------------------	--------------------	-------------------	-----------------	-------------------	-----------------------

Change Over Sub	1.00			3305.00	
Shut In Tool	5.00			3310.00	
Hydraulic tool	5.00			3315.00	
Packer	5.00			3320.00	21.00      Bottom Of Top Packer
Packer	5.00			3325.00	
Stubb	1.00			3326.00	
Perforations	5.00			3331.00	
Change Over Sub	1.00			3332.00	
Drill Pipe	31.00			3363.00	
Recorder	0.00	6799	Outside	3363.00	
Recorder	0.00	8648	Inside	3363.00	
Change Over Sub	1.00			3364.00	
Perforations	22.00			3386.00	
Bullnose	3.00			3389.00	64.00      Bottom Packers & Anchor

**Total Tool Length: 85.00**



**TRILOBITE  
TESTING, INC.**

# DRILL STEM TEST REPORT

**FLUID SUMMARY**

Charter Energy Inc  
PO Box 252  
Great Bend KS 67530  
ATTN: Jim Musgrove

**18-18s-13w Barton KS**  
**FE #1**  
Job Ticket: 54459      **DST#: 3**  
Test Start: 2013.09.18 @ 01:11:00

## Mud and Cushion Information

Mud Type: Gel Chem	Cushion Type:	Oil API:	deg API
Mud Weight: 9.00 lb/gal	Cushion Length: ft	Water Salinity:	ppm
Viscosity: 47.00 sec/qt	Cushion Volume: bbl		
Water Loss: 7.95 in <sup>3</sup>	Gas Cushion Type:		
Resistivity: ohm.m	Gas Cushion Pressure: psig		
Salinity: 5300.00 ppm			
Filter Cake: inches			

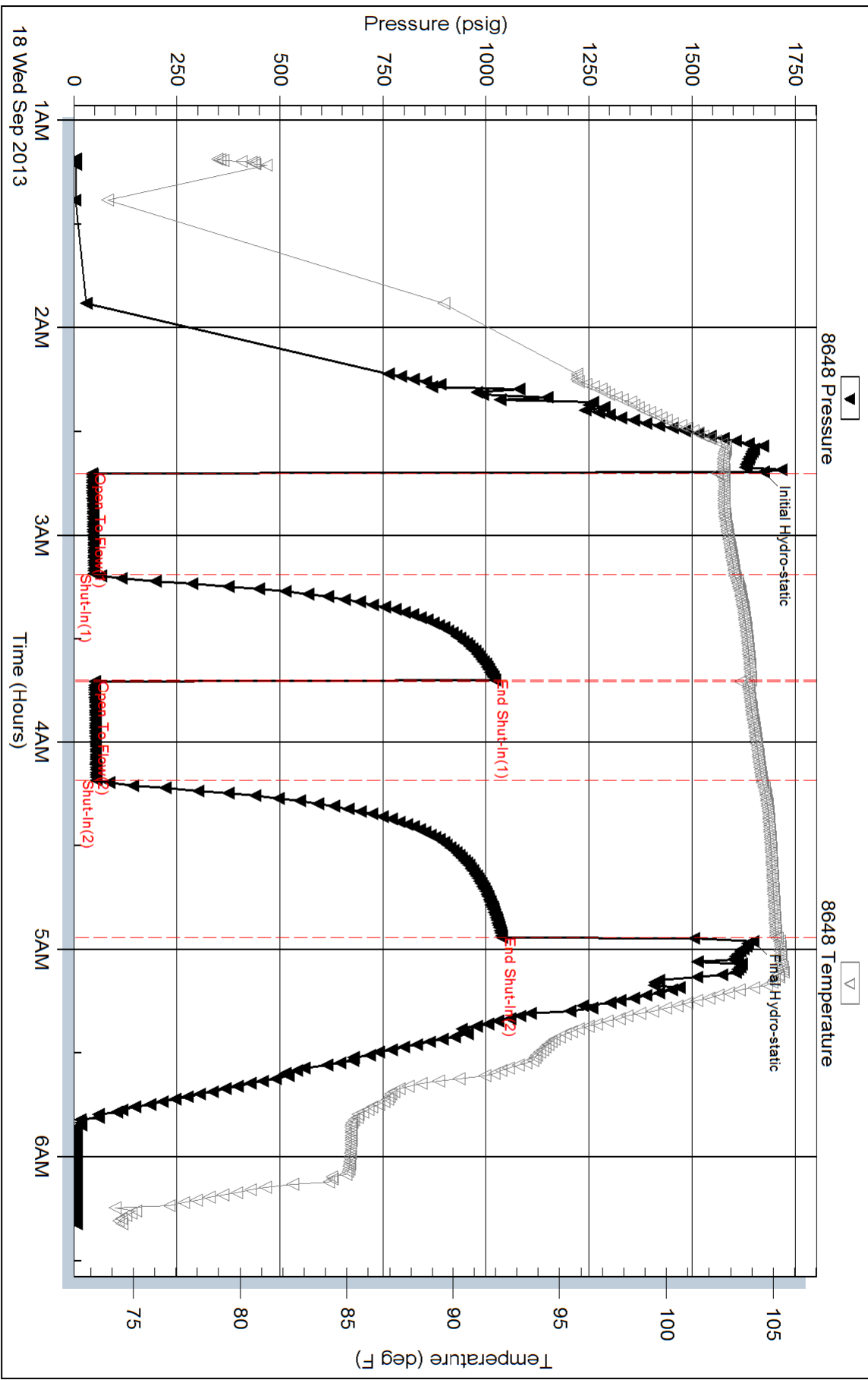
## Recovery Information

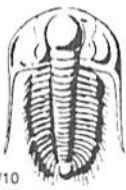
Recovery Table

Length ft	Description	Volume bbl
30.00	Mud, w ith oil spots, 100%M	0.421

Total Length: 30.00 ft      Total Volume: 0.421 bbl  
Num Fluid Samples: 0      Num Gas Bombs: 0      Serial #:  
Laboratory Name:      Laboratory Location:  
Recovery Comments:

### Pressure vs. Time





# TRILOBITE TESTING INC.

1515 Commerce Parkway • Hays, Kansas 67601

## Test Ticket

NO. 54457

Well Name & No. FE #1 Test No. 1 Date 9-17-13  
 Company Charter Energy Inc Elevation 1873 KB 1866 GL  
 Address Po Box 252, Great Bend KS, 67530  
 Co. Rep / Geo. Jim Musgrove Rig Royal 2  
 Location: Sec. 19 Twp. 18s Rge. 13w Co. Barton State KS

Interval Tested 3324 - 3380 Zone Tested Arbuckle  
 Anchor Length 56' Drill Pipe Run 3318' Mud Wt. 9.2  
 Top Packer Depth 3319 Drill Collars Run - Vis 47  
 Bottom Packer Depth 3324 Wt. Pipe Run - WL 8.0  
 Total Depth 3380 Chlorides 5,300 ppm System LCM -

Blow Description ±F - 1/4" blow, dired in 23 min.  
ISI - No return  
FF - No blow  
FSI - No return

Rec	Feet of	%gas	%oil	%water	%mud
<u>4</u>	<u>SOCM</u>	<u>10</u>		<u>90</u>	
<u>1</u>	<u>Free oil</u>				

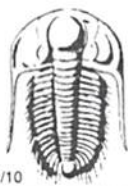
Rec Total 5 BHT 108° Gravity - API RW - @ - °F Chlorides - ppm

(A) Initial Hydrostatic 1650  Test 1150 T-On Location 5:24am  
 (B) First Initial Flow 31  Jars - T-Started 6:08am  
 (C) First Final Flow 32  Safety Joint - T-Open 8:58am  
 (D) Initial Shut-In 255  Circ Sub - T-Pulled 10:58am  
 (E) Second Initial Flow 34  Hourly Standby - T-Out 12:06pm  
 (F) Second Final Flow 31  Mileage 106 RT 164.30 Comments -  
 (G) Final Shut-In 129  Sampler -  
 (H) Final Hydrostatic 1632  Straddle -  Ruined Shale Packer -  
 Shale Packer -  Ruined Packer -  
 Extra Packer -  Extra Copies -  
 Extra Recorder - Sub Total 0  
 Day Standby - Total 1314.30  
 Accessibility - MP/DST Disc't -  
 Sub Total 1314.30

Approved By \_\_\_\_\_ Our Representative Cody Black

Trilobite Testing Inc. shall not be liable for damaged of any kind of the property or personnel of the one for whom a test is made, or for any loss suffered or sustained, directly or indirectly, through the use of its equipment, or its statements or opinion concerning the results of any test, tools lost or damaged in the hole shall be paid for at cost by the party for whom the test is made.





# TRILOBITE TESTING INC.

1515 Commerce Parkway • Hays, Kansas 67601

## Test Ticket

NO. 54458

Well Name & No. FE #1 Test No. 2 Date 9-17-13  
 Company Charter Energy Inc Elevation 1873 KB 1866 GL  
 Address Po Box 252, Great Bend KS, 67530  
 Co. Rep / Geo. Jim Musgrove Rig Royal 2  
 Location: Sec. 18 Twp. 18s Rge. 13w Co. Barton State KS

Interval Tested 3324 - 3385 Zone Tested Arbuckle  
 Anchor Length 61' Drill Pipe Run 3319' Mud Wt. 9.2  
 Top Packer Depth 3319 Drill Collars Run — Vis 47  
 Bottom Packer Depth 3324 Wt. Pipe Run — WL 8.0  
 Total Depth 3385 Chlorides 5300 ppm System LCM —

Blow Description IF - B.O.B in 4.5 seconds  
ISI - No ~~flow~~ return  
FF - No blow  
FSI - No return

Rec	Feet of	%gas	%oil	%water	%mud
<u>134</u>	<u>Mud with oil spots</u>			<u>100</u>	
Rec	Feet of	%gas	%oil	%water	%mud
Rec	Feet of	%gas	%oil	%water	%mud
Rec	Feet of	%gas	%oil	%water	%mud
Rec	Feet of	%gas	%oil	%water	%mud

Rec Total 134' BHT 104° Gravity — API RW — @ — °F Chlorides — ppm

(A) Initial Hydrostatic <u>1652</u>	<input checked="" type="checkbox"/> Test <u>1150</u>	T-On Location <u>4:00 pm</u>
(B) First Initial Flow <u>40</u>	<input type="checkbox"/> Jars	T-Started <u><del>6:07 pm</del> 4:30 pm</u>
(C) First Final Flow <u>96</u>	<input type="checkbox"/> Safety Joint	T-Open <u>6:07 pm</u>
(D) Initial Shut-In <u>612</u>	<input checked="" type="checkbox"/> Circ Sub	T-Pulled <u>7:22 pm</u>
(E) Second Initial Flow <u>99</u>	<input type="checkbox"/> Hourly Standby	T-Out <u>8:50 pm</u>
(F) Second Final Flow <u>96</u>	<input checked="" type="checkbox"/> Mileage <u>106 RT</u> 164.30	Comments
(G) Final Shut-In <u>525</u>	<input type="checkbox"/> Sampler	
(H) Final Hydrostatic <u>1616</u>	<input type="checkbox"/> Straddle	<input type="checkbox"/> Ruined Shale Packer

Initial Open 15  
 Initial Shut-In 20  
 Final Flow 20  
 Final Shut-In 30

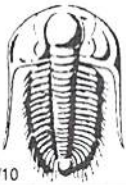
Shale Packer  
 Extra Packer  
 Extra Recorder  
 Day Standby  
 Accessibility

Ruined Packer  
 Extra Copies  
 Sub Total 0  
 Total 1314.30  
 MP/DST Disc't

Sub Total 1314.30

Approved By \_\_\_\_\_ Our Representative \_\_\_\_\_

Trilobite Testing Inc. shall not be liable for damaged of any kind of the property or personnel of the one for whom a test is made, or for any loss suffered or sustained, directly or indirectly, through the use of its equipment, or its statements or opinion concerning the results of any test, tools lost or damaged in the hole shall be paid for at cost by the party for whom the test is made.



# TRILOBITE TESTING INC.

1515 Commerce Parkway • Hays, Kansas 67601

## Test Ticket

NO. **54459**

Well Name & No. FE #1 Test No. 3 Date 9-18-13  
 Company Charter Energy Inc Elevation 1873 KB 1866 GL  
 Address Po Box 252, Great Bend KS, 67530  
 Co. Rep / Geo. Jim Musgrove Rig Royal 2  
 Location: Sec. 18 Twp. 18s Rge. 13w Co. Barton State KS

Interval Tested 3325 - 3389 Zone Tested Arbuckle  
 Anchor Length 64' Drill Pipe Run 3404' Mud Wt. 9.2  
 Top Packer Depth 3320 Drill Collars Run - Vis 47  
 Bottom Packer Depth 3325 Wt. Pipe Run - WL 8.0  
 Total Depth 3389 Chlorides 5,300 ppm System LCM -

Blow Description ±F - 1 1/2" blow  
ISI - No return  
FF - No blow  
FSI - No return

Rec	Feet of	%gas	%oil	%water	%mud
<u>30</u>	<u>Mud w oil spots</u>			<u>100</u>	
Rec	Feet of	%gas	%oil	%water	%mud
Rec	Feet of	%gas	%oil	%water	%mud
Rec	Feet of	%gas	%oil	%water	%mud
Rec	Feet of	%gas	%oil	%water	%mud

Rec Total 30 BHT \_\_\_\_\_ Gravity \_\_\_\_\_ API RW \_\_\_\_\_ @ \_\_\_\_\_ °F Chlorides \_\_\_\_\_ ppm

(A) Initial Hydrostatic 1673  Test 1150 T-On Location 12:50am  
 (B) First Initial Flow 43  Jars \_\_\_\_\_ T-Started 1:11am  
 (C) First Final Flow 48  Safety Joint \_\_\_\_\_ T-Open 2:43am  
 (D) Initial Shut-In 1021  Circ Sub \_\_\_\_\_ T-Pulled 4:58am  
 (E) Second Initial Flow 50  Hourly Standby \_\_\_\_\_ T-Out 6:21am  
 (F) Second Final Flow 53  Mileage 106 RT 164.30 Comments \_\_\_\_\_  
 (G) Final Shut-In 1039  Sampler \_\_\_\_\_  
 (H) Final Hydrostatic 1648  Straddle \_\_\_\_\_  Ruined Shale Packer \_\_\_\_\_  
 Shale Packer \_\_\_\_\_  Ruined Packer \_\_\_\_\_  
 Extra Packer \_\_\_\_\_  Extra Copies \_\_\_\_\_  
 Initial Open 30  Extra Recorder \_\_\_\_\_ Sub Total 0  
 Initial Shut-In 30  Day Standby \_\_\_\_\_ Total 1314.30  
 Final Flow 30  Accessibility \_\_\_\_\_ MP/DST Disc't \_\_\_\_\_  
 Final Shut-In 45 Sub Total 1314.30

Approved By \_\_\_\_\_ Our Representative Cody Blaedon

Trilobite Testing Inc. shall not be liable for damaged of any kind of the property or personnel of the one for whom a test is made, or for any loss suffered or sustained, directly or indirectly, through the use of its equipment, or its statements or opinion concerning the results of any test, tools lost or damaged in the hole shall be paid for at cost by the party for whom the test is made.