



**TRILOBITE TESTING, INC.**

# DRILL STEM TEST REPORT

Woolsey Operating CO LLC  
 125 N Market  
 STE 1000  
 Wichita KS 67202  
 ATTN: Dean Pattison/ Bill

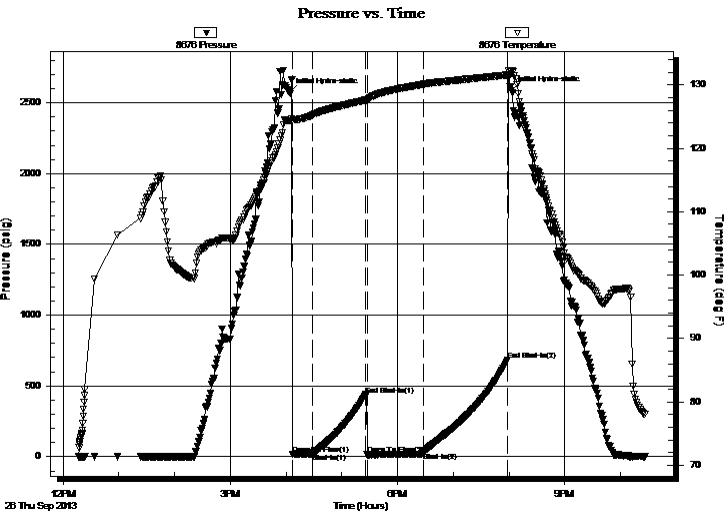
**10-35-12 Barber Co**  
**Platt GU # 6**  
 Job Ticket: 52434      **DST#: 2**  
 Test Start: 2013.09.26 @ 12:16:40

## GENERAL INFORMATION:

Formation: **Simpson**  
 Deviated: No Whipstock:                      ft (KB)  
 Time Tool Opened: 16:07:10  
 Time Test Ended: 22:26:10  
 Interval: **5350.00 ft (KB) To 5372.00 ft (KB) (TVD)**  
 Total Depth: 5372.00 ft (KB) (TVD)  
 Hole Diameter: 7.88 inches Hole Condition: Fair  
 Test Type: Conventional Bottom Hole (Reset)  
 Tester: Chris Staats  
 Unit No: 47  
 Reference Elevations: 1403.00 ft (KB)  
 1390.00 ft (CF)  
 KB to GR/CF: 13.00 ft

**Serial #: 8676      Outside**  
 Press @ Run Depth: 30.42 psig @ 5351.00 ft (KB)      Capacity: 8000.00 psig  
 Start Date: 2013.09.26      End Date: 2013.09.26      Last Calib.: 2013.09.26  
 Start Time: 12:16:45      End Time: 22:26:10      Time On Btm: 2013.09.26 @ 16:03:55  
 Time Off Btm:

TEST COMMENT: IF: Weak blow 1/2"  
 IS: No blow back  
 FF: Strong blow BOB 21 min  
 FS: No blow back



## PRESSURE SUMMARY

Time (Min.)	Pressure (psig)	Temp (deg F)	Annotation
0	2570.12	124.37	Initial Hydro-static
4	18.50	124.38	Open To Flow (1)
25	23.41	125.26	Shut-In(1)
82	435.06	127.62	End Shut-In(1)
84	14.31	127.65	Open To Flow (2)
144	30.42	130.10	Shut-In(2)
235	685.01	131.60	End Shut-In(2)
239	2586.71	132.27	Initial Hydro-static

## Recovery

Length (ft)	Description	Volume (bbl)
0.00	300' GIP	0.00
15.00	O,M 2%oil 98%mud	0.21

\* Recovery from multiple tests

## Gas Rates

Choke (inches)	Pressure (psig)	Gas Rate (Mcf/d)



**TRILOBITE  
TESTING, INC.**

# DRILL STEM TEST REPORT

**FLUID SUMMARY**

Woolsey Operating CO LLC

**10-35-12 Barber Co**

125 N Market  
STE 1000  
Wichita KS 67202  
ATTN: Dean Pattison/ Bill

**Platt GU # 6**

Job Ticket: 52434

**DST#: 2**

Test Start: 2013.09.26 @ 12:16:40

## Mud and Cushion Information

Mud Type: Gel Chem

Mud Weight: 9.00 lb/gal

Viscosity: 60.00 sec/qt

Water Loss: 10.79 in<sup>3</sup>

Resistivity: 0.00 ohm.m

Salinity: 4500.00 ppm

Filter Cake: 0.02 inches

Cushion Type:

Cushion Length: ft

Cushion Volume: bbl

Gas Cushion Type:

Gas Cushion Pressure: psig

Oil API:

Water Salinity: deg API

deg API

ppm

## Recovery Information

Recovery Table

Length ft	Description	Volume bbl
0.00	300' GIP	0.000
15.00	O,M 2%oil 98%mud	0.210

Total Length: 15.00 ft      Total Volume: 0.210 bbl

Num Fluid Samples: 0

Num Gas Bombs: 0

Serial #:

Laboratory Name:

Laboratory Location:

Recovery Comments:

