



**Woolsey Operating Company, LLC**

Scale 1:240 (5"=100') Imperial  
Measured Depth Log

Well Name: Platt #6  
Location: Section 10 - Township 35 South - Range 12 West  
License Number: 15-007-24070 -00-00 Region: Barber County, Kansas  
Spud Date: September 16, 2013 Drilling Completed: September 27, 2013  
Surface Coordinates: 2045' FSL & 1920' FWL  
Approx. C NE SW

**Bottom Hole Coordinates:**

Ground Elevation (ft): 1405' K.B. Elevation (ft): 1392'  
Logged Interval (ft): 4400' To: 5505' Total Depth (ft): 5505'  
Formation: Kansas City ----> Simpson Group  
Type of Drilling Fluid: Chemical Mud, Displaced at 3431'

Printed by WellSight Log Viewer from WellSight Systems 1-800-447-1534 [www.WellSight.com](http://www.WellSight.com)

**OPERATOR**

Company: Woolsey Operating Company, LLC  
Address: 125 N. Market, Suite 1000  
Wichita, KS 67202

**GEOLOGIST**

Name: Bill Klaver  
Company: Woolsey Operating Co. LLC  
Address: 125 N. Market, Wichita Kansas, 67202

## COMMENTS

Surface Casing: Ran 5 joints of new 13 3/8" X 48#/ft casing to 226' KB (tally 210') with 230 sx Class A, 2% gel, 3 cc. Plug down at 2:30 am on 9/17/2013. Cement did circulate. Lost returns under surface at 645', reamed and rat holed ahead for intermediate casing. Ran 22 joints of new 8 5/8" X 23#/ft casing to 956' KB (tally 942') with 270 sx 60/40 pozmix.

Production Casing: 5 1/2" X 15.5#/ft

Deviation Surveys: 1/2 at 228', 1 at 363', 1 1/4 at 1460', 3/4 at 1817', 3/4 at 2228', 3/4 at 2700', 3/4 at 3207', 1 1/4 at 3748', 1 at 4283', 3/4 at 4726'. 1 at 4912', 3/4 at 5505'

Pipe Strap @ 4910', Strap:4914.83', Board: 4916.62'. Strap 1.79' short. No correction was made to the board.

Ninnescah Drilling Rig 101 Bit Record:

- 1) 17 1/2" HTC RR in at 0, out at 228'. 4.25 hours
- 2) 7 7/8" Varel HE-21 in at 228' out at 645', 5.25 hours
- 3) 12 1/2" Miltooth RR in at 645' out at 963', 8.5 hours
- 4) 7 7/8" Varel HE-21 RR in at 963' out at 4910', 96 hours
- 5) 7 7/8" Varel HE-34 in at 4910', out at 5505', 593'. 43.5 hours

Gas Detector: Woolsey Operating Company, Gas Trailer #2

Mud System: Mud-Co. Brad Bortz, Engineer

DSTs: Trilobite Testing Co. Chris Staats, Tester

E-Logs: Nabors Completion and Production Services, Dual Induction Laterolog w/SP, CNL-FDC w/PE, Gamma Ray and Caliper. Jason Capellucci, Engineer

## DSTs

DST #1 Mississippian. 4754'-4912', 30"-60"-60"-120". Strong blow BOB in 2 minutes of both flow periods. No blow back on either shut in period. Recovery: 180' Drilling Mud, 360' SOCM (<1% Oil). IHP 2331, IFP 81-218, ISIP 648, FFP 292-313, FSIP 582, FHP 2293. BHT 125 degrees.

DST #2 Simpson 'F' Dolomite, 5350'-5372', 30"-60"-60"-90". Weak 1" blow during initial flow period, Fair to strong blow BOB 21 minutes into final flow period. Rec: 300' GIP, 15' OCM (2% Oil, 98% Mud), IHP 2570, IFP 18-23, ISIP 435, FFP 14-30, FSIP 685, FHP 2586. BHT 131 degrees.

## CREWS

Rich Barriger, Tool Pusher

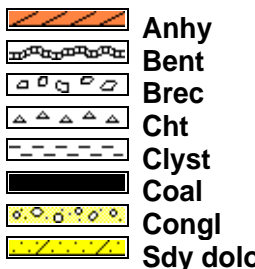
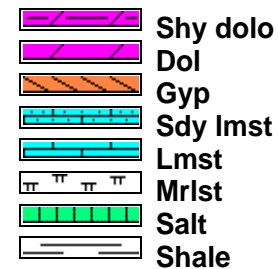
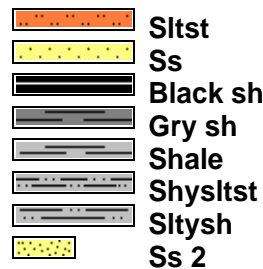
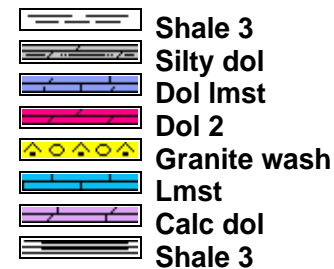
Jason Barriger, Days

Juan Navarro, Evening



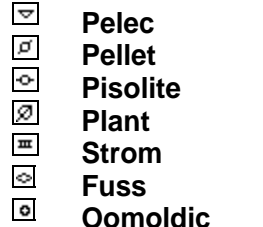



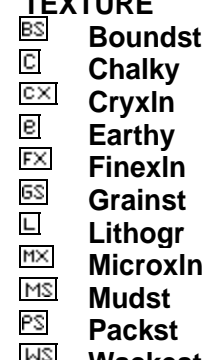
Ronaldo Guerrero, Morning

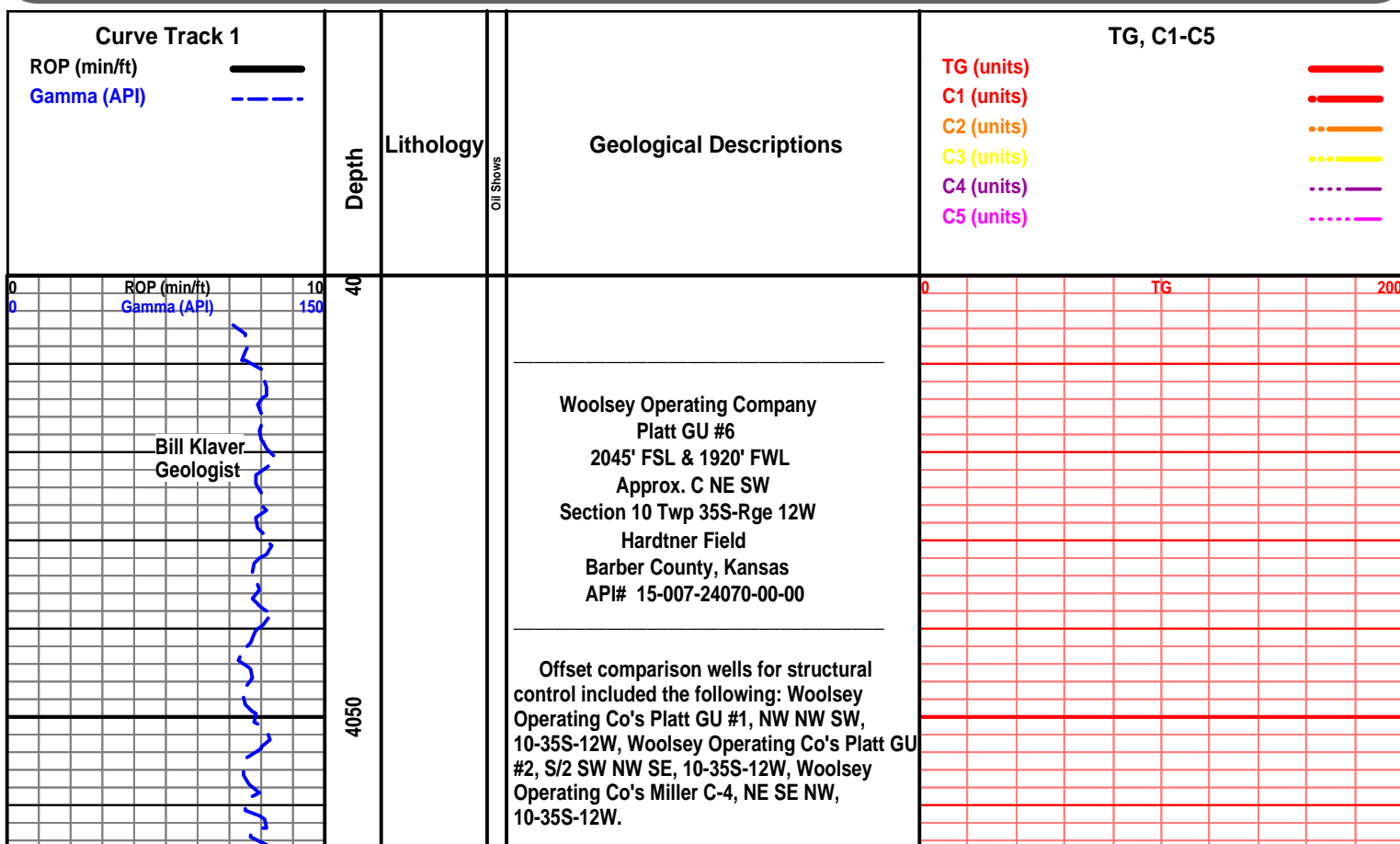
Oscar Orona, Relief

## ROCK TYPES

|   |   |  |   |
|---|---|--|---|
|  <p>Anhy<br/>Bent<br/>Brec<br/>Cht<br/>Clyst<br/>Coal<br/>Congl<br/>Sdy dolo</p> |  <p>Shy dolo<br/>Dol<br/>Gyp<br/>Sdy lmst<br/>Lmst<br/>Mrlst<br/>Salt<br/>Shale</p> |  <p>Sltst<br/>Ss<br/>Black sh<br/>Gry sh<br/>Shale<br/>Shyslts<br/>Sltys<br/>Ss 2</p> |  <p>Shale 3<br/>Silty dol<br/>Dol lmst<br/>Dol 2<br/>Granite wash<br/>Lmst<br/>Calc dol<br/>Shale 3</p> |
|---|---|--|---|

## ACCESSORIES

|   |  |   |  |
|---|--|---|--|
| <h3>MINERAL</h3>  <p>Anhy<br/>Arg<br/>Bent<br/>Bit<br/>Brecfrag<br/>Calc<br/>Carb<br/>Chtdk<br/>Chtlt<br/>Dol<br/>Ferrpel<br/>Ferr<br/>Glau<br/>Gyp<br/>Marl<br/>Nodule<br/>Phos<br/>Pyr<br/>Salt<br/>Sandy<br/>Silt</p> |  <p>Chlorite<br/>Dol<br/>Sand<br/>Sltly</p>   |  <p>Pelec<br/>Pellet<br/>Pisolite<br/>Plant<br/>Strom<br/>Fuss<br/>Oomoldic</p>   |  <p>Grysh<br/>Gryslt<br/>Lms<br/>Sandylms<br/>Sh<br/>Sltstn</p> |
| <h3>FOSSIL</h3>  <p>Algae<br/>Amph<br/>Belm<br/>Bioclst<br/>Brach<br/>Bryozoa<br/>Cephal<br/>Coral<br/>Crin<br/>Echin<br/>Fish<br/>Foram<br/>Fossil<br/>Oolite<br/>Ostra</p>  | <h3>STRINGER</h3>  <p>Anhy<br/>Arg<br/>Bent<br/>Coal<br/>Dol<br/>Gyp<br/>Ls<br/>Mrst<br/>Sltstrg<br/>Ssstrg<br/>Carbsh<br/>Clystn<br/>Dol</p> | <h3>TEXTURE</h3>  <p>Boundst<br/>Chalky<br/>Cryxln<br/>Earthy<br/>Finexln<br/>Grainst<br/>Lithogr<br/>Microxln<br/>Mudst<br/>Packst<br/>Wackest</p> |  |



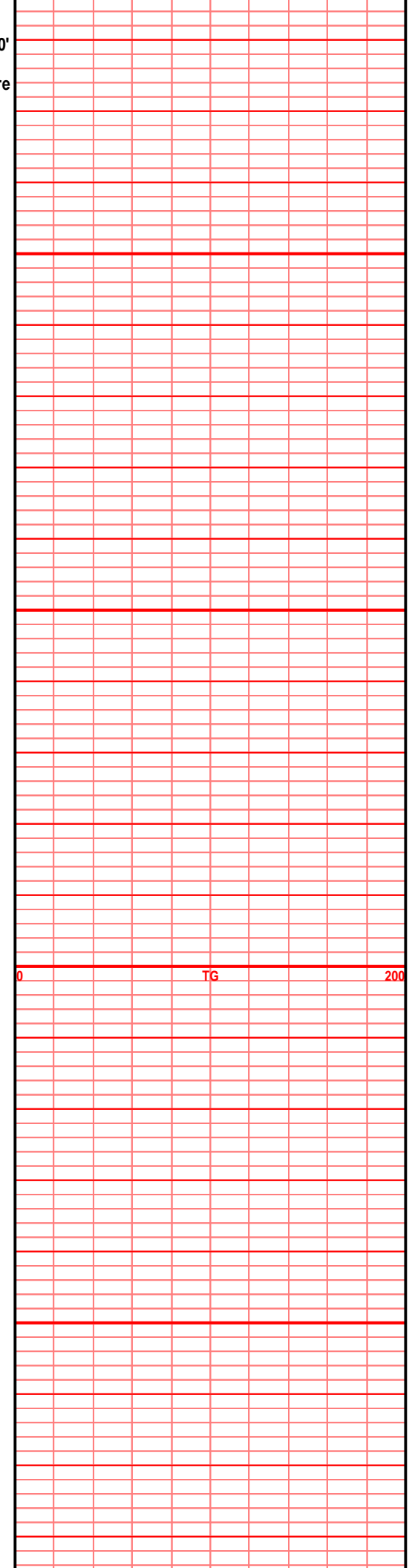
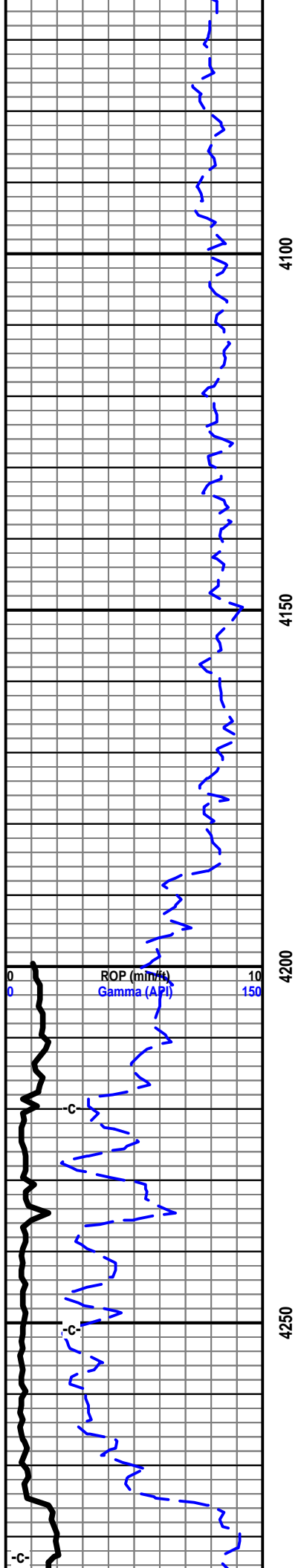
One foot drill time was recorded from 4400' to RTD. 10' and circulating samples were gathered from 4600' to RTD. All samples were delivered to the Survey

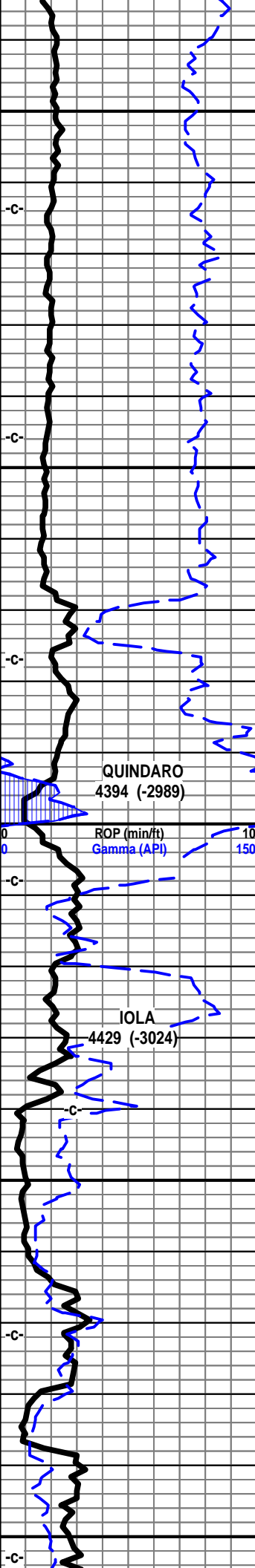
7 am Progress:

September 16, 2013 MIRT/SPUD  
 September 17, 2013 WOC  
 September 18, 2013 Lost returns at 645'  
 September 19, 2013 Drilling at 1040'  
 September 20, 2013 Drilling at 2151'  
 September 21, 2013 Drilling at 3040'  
 September 22, 2013 Drilling at 3905'  
 September 23, 2013 Drilling at 4606'  
 September 24, 2013 TIH w/DST 1 at 4912'  
 September 25, 2013 Drilling at 5043'  
 September 26, 2013 Drilling at 5336'  
 September 27, 2013 Drilling at 5420'  
 E-Logs out 10:30 pm.

E-Log Tops:

Herington 1933 (-528)  
 Onaga 2792 (-1387)  
 Wabaunsee 2852 (-1447)  
 LeCompton 3524 (-2219)  
 Kanwaka 3647 (-2242)  
 Elgin Sand 3685 (-2280)  
 Heebner 3844 (-2439)  
 Toronto 3857 (-2452)  
 Douglas Group 3884 (-2479)  
 Haskell Not present  
 Stalnaker 4178 (-2773)  
 Quindaro 4387 (-2982)  
 Kansas City 'F' 4400 (-2995)  
 Kansas City 'G' (Iola) 4422 (-3017)  
 Kansas City 'I' (Dennis) 4504 (-3099)  
 Stark 4548 (-3143)  
 Kansas City 'J' (Swope) 4560 (-3155)  
 Hushpuckney 4582 (-3177)  
 Kansas City 'K' (Hertha) 4596 (-3191)  
 B/Kansas City 4631 (-3226)  
 Pawnee 4733 (-3328)  
 Cherokee Group 4773 (-3328)  
 Cherokee Sand 4803 (-3398)  
 Mississippi 4836 (-3431)  
 C3 4839 (-3434)  
 C2A 4856 (-3451)  
 C2 4896 (-3491)  
 C1 4962 (-3557)  
 Osage 5065 (-3660)  
 Northview Shale 5077 (-3672)  
 Compton 5097 (-3692)  
 Kinderhook 5113 (-3708)  
 Woodford 5188 (-3783)  
 Misener Sand 5213 (-3808)  
 Viola 5241 (-3836)  
 Simpson Group 5356 (-3951)  
 Simpson 'F' Dolomite 5357 (-3952)  
 Wilcox Sand 5378 (-3973)  
 McLish Shale 5445 (-4040)

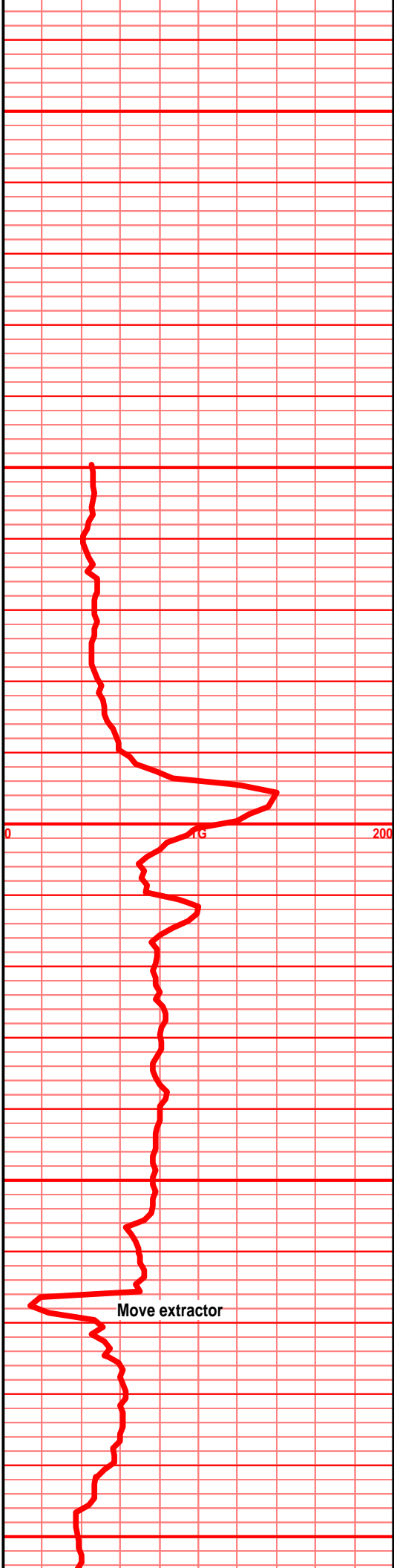


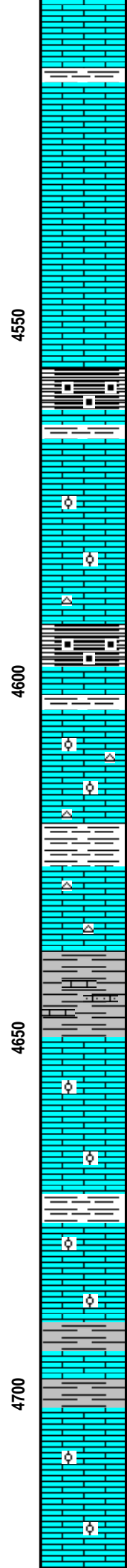
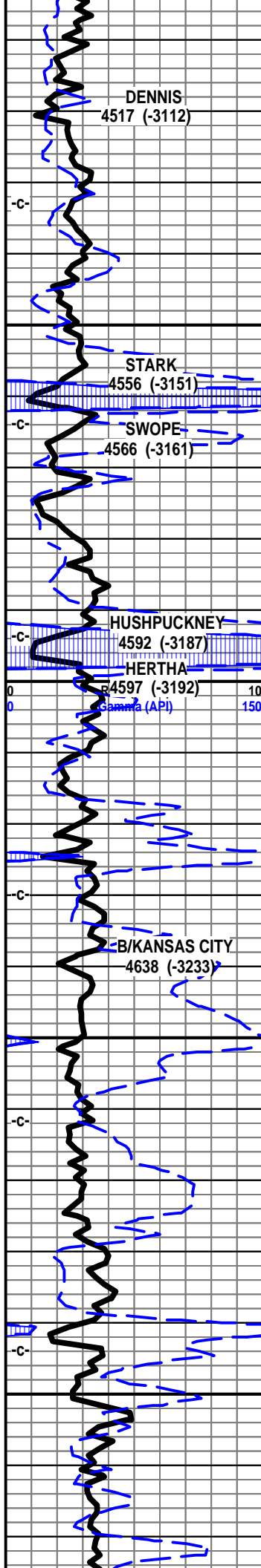


4300  
4350  
4400  
4450  
4500



- Oil and Gas Show Legend
- ⊗ Gas
  - Even Stain/Saturation
  - ◐ Spotted Stain/Saturation
  - Questionable
  - ◑ Dead/Gilsonitic Stain





lst off wht crm tan f xln blk ang sub chlky, foss frags, foss ool/pelletal, chrt wht lt gry shrp frsh

shl drk gry blk, blk carb, wxy grsy text, abun gas bubs, blk ang pcs

shl gry drk gry, lst tan crm, sli buff, f xln blk ang sub chlky pcs, foss frags, foss ool, chrt off wht lt gry shrp frsh opa

lst off wht tan lt gry in prt, f sli med xln, gran sub chlky, calc xln fill, tr foss frags, tr foss ool, tr chrt wht lt gry shrp frsh opa

lst tan lt gry off wht f vf xln dns hrd blk ang arg in prt, sub chlky, tr foss frags, chrt tan brn shrp frsh opa

shl gry drk gry brn silty gritty, lst dull gry tan, xln dns hrd blk ang arg silty

gry green silty limy shls, lst tan gry lt green silty gritty, arg, calc in prt, shls gry green brn silty gritty calc

lst tan gry tr buff f vf xln dns hrd blk ang pcs tr sub chlky, micor foss frags, calc xln fill, shls gry green silty gritty calc

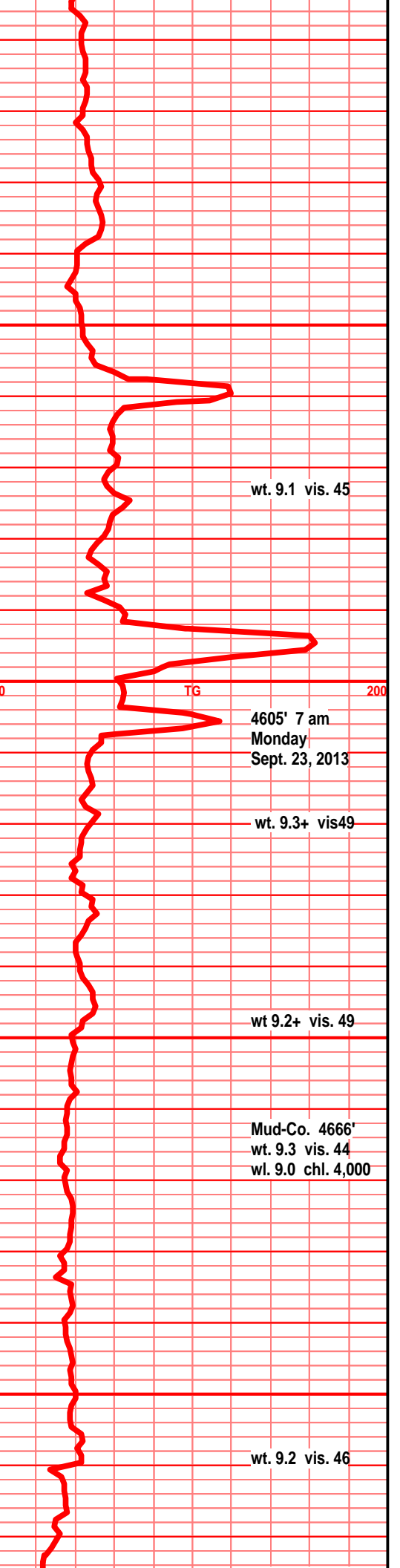
lst crm buff tan f sli vf xln dns hrd blk ang, tr sub chlky, foss frags, micro ool/pelletal, calc xln fill

shl gry drk gry blk, silty gritty, lst crm tan buff, f vf xln dns hrd blk foss frags, micro ool/pelletal, calc xln fill

shl gry blk, silty gritty in most, lst tan buff crm, f vf xln dns hrd blk ang pcs, micro foss, frags/ool/pelletal, calc xln fill

lst buff tan crm f vf xln blk ang dns hrd pcs, sub chlky, foss frags, micro ool, micro pelleta calc xln fill,

lst crm tan buff f vf xln dns hrd blk ang tr su



wt. 9.1 vis. 45

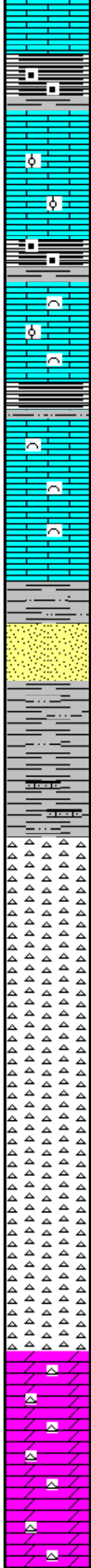
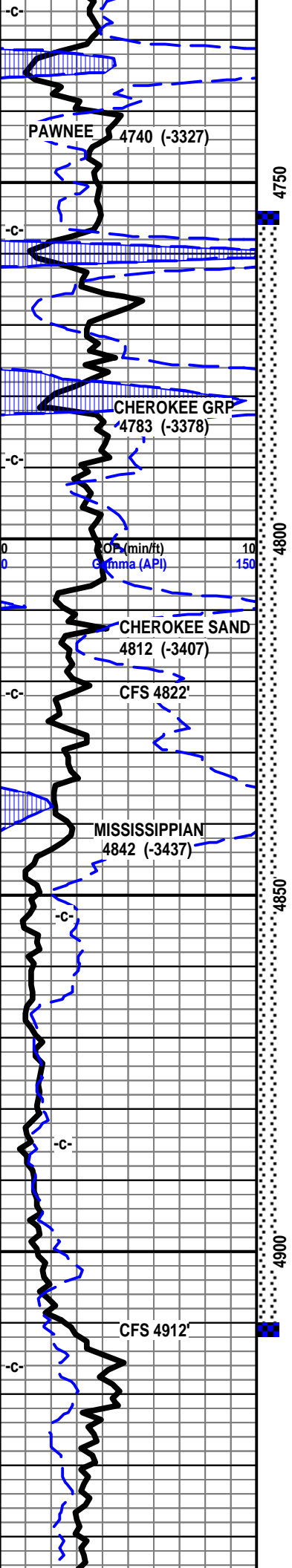
4605' 7 am  
Monday  
Sept. 23, 2013

wt. 9.3+ vis49

wt 9.2+ vis. 49

Mud-Co. 4666'  
wt. 9.3 vis. 44  
wl. 9.0 chl. 4,000

wt. 9.2 vis. 46



lst crm tan buff f vf xln dns hrd blkly ang tr su  
chlky, micor foss frags, tr chrt wht shrp opa

shl gry drk gry blk carb, blkly ang pcs, wxy  
grsy text, gas bubs

lst crm tan mstly buff f xln gran sub chlky foss  
frags, foss ool, micro ool/pelletal, calc xln fill,  
tr inter ool por, tr inter xln por, mstly dns hrd,  
tr sli sub chlky in some

shl gry drk gry blk, wxy grsy text, gas bubs, ls  
tan buff f vf xln dns hrd blkly ang dns micro  
foss frags, micro ool, tr sub chlky,

lst tan buff vry lt gry f vf xln dns hrd blkly tr  
sub chlky, foss frags, foss ool/pelletal, calc  
xln fill

shl gry blk carb in rpt, wxy grsy text abun gas  
bubs, lst tan buff lt gry f vf xln dns hrd blkly  
ang pcs, tr sub chlky, foss frags, pelletal/ool,  
calc xln fill

lst crm tan lt gry f vf xln blkly ang dns, sli  
chlky, gran, soft, foss frags, micro foss frags,

shl gry med gry soft mushy gritty,  
sst drk tan/gry mstly brn clstrs, f vf grnd, sub  
ang to sub rded grns, w/srted, fair to well cem,  
tr sub fria, mstly blkly ang hrd clstrs, tr inter  
grn por, drk brn/blk stain, filmy SFO, gas bubs  
& odor on break

shl gry green, maroon, reds, yellow blue gry  
green vari color, silty, sndy gritty, snd grn  
inclu, pyritic, etc. much Cke sd material in spl

chrt off wht tan lt gry, tr smokey gry, shrp frsh  
opaq, blkly ang pcs, w/weath tr gran sub  
gran/sli spongy edge, tr foss, vis frac por, tr  
weath sli trip text edge, pp moldic vug por, fair  
odor, lt tan/drk brn stain, gas bubs, filmy SFO,  
SFO on brk

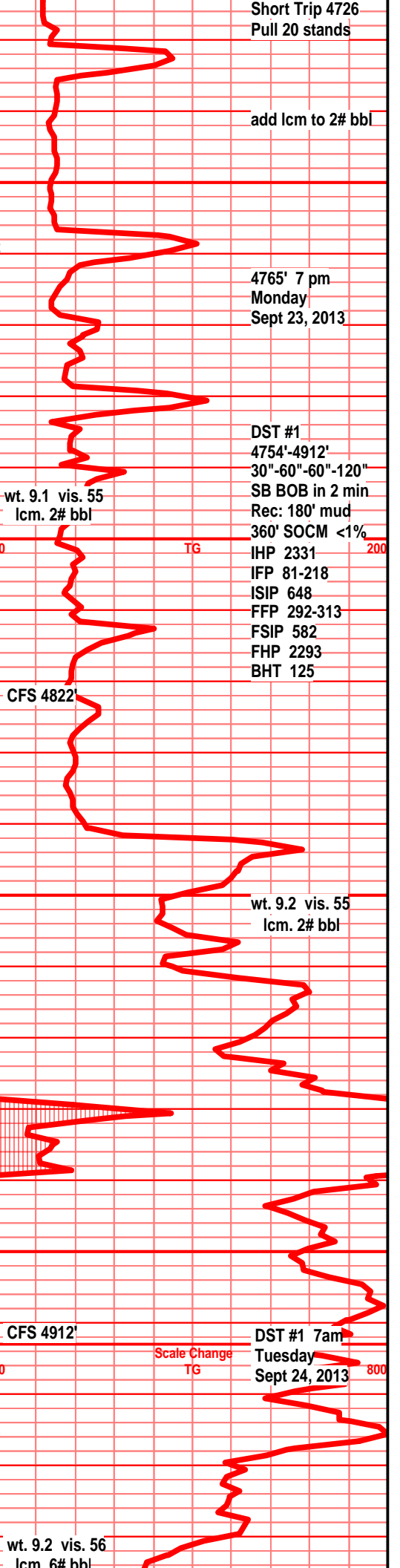
chrt off wht lt tan lt gry tr lt smokey, shrp frsh  
opaq, blkly ang pcs, chrt wht tan brn mott, frst  
w/tan brn gran sli trip text edges/sides, tr  
spongy text, pp moldic vug por, inter gran  
por, frac por, tan brn stained edges, tan brn  
stain, filmy SFO, gas bubs on break, fair to  
good odor in all

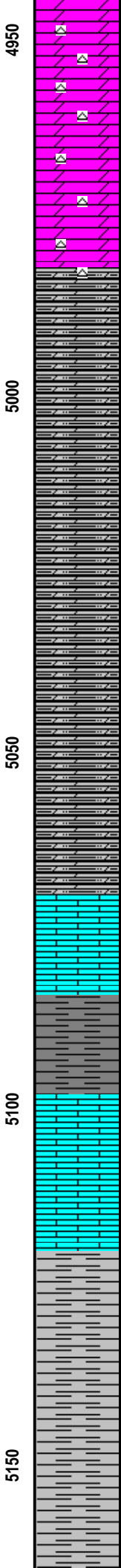
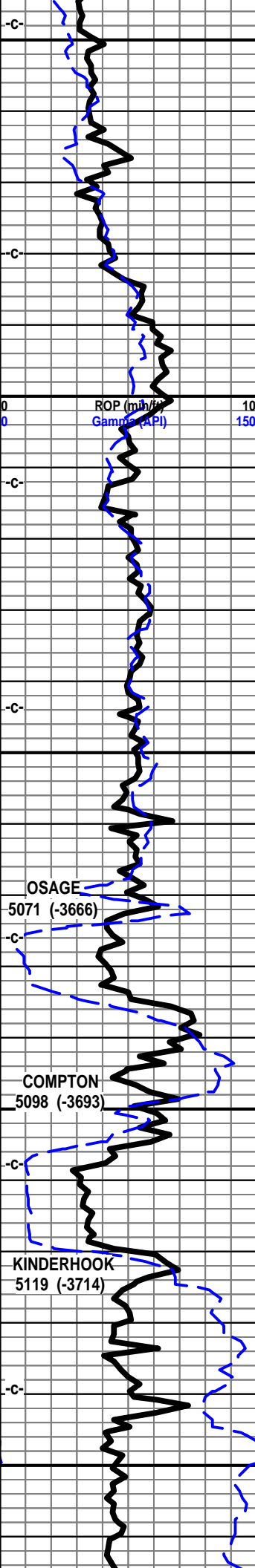
chrt wht, off wht, tan lt gry, shrp frsh opa

sub transl, blkly ang pcs, incr chrt wht tan lt  
gry w/tan brn gran sli spongy, trip text  
edges/sides, pp moldic gran vug por, frac por,  
tan brn stained edges, tan drk tan brn tr blk  
stain, fair to good odor, filmy SFO, gas bubs  
on break. chrt drk brn wht lt gry mott, weath  
gran trip text, gd pp vug por, SFO, gd odor.

dolo, chrtly dolo, lt gry tan f xln gran, sli silty,  
gritty, with wht lt gry shrp frsh chrt inclu, dolo  
with lt tan brn stain, tr gas bubs/SSFO on  
break, gd stain along dolo/chrt contact, sli  
odor, tr inter xln por, chrt with tr weath text  
edge w/stain

dolo, chrtly dolo, lt gry tan f tr vf xln dns blkly  
ang hrd pcs, sli silty, gritty, tr inter xln por, tan  
lt brn stain, gas bub, filmy SFO on brk, chrtly  
and chrt inclu wht tan lt gry, shrp frsh with t





and chrt incld, wht tan lt gry, shrp frsh with  
weath edge text, tr pp moldic por, tan brn  
stain, sli odor in all

dolo gry bec med gry, f vf xln dns hrd blk ang  
pcs, incr silty, gritty, arg, calc content, chrt  
wht shrp frsh opa, tr rare stain, odor gone

dolo gry med gry, f vf xln silty gritty, blk ang  
pcs, silty silty semi calc dolostn, chrt wht shrp  
frhs opa

dolo gry , med gry f vf xln dns hrd blk ang  
silty gritty pcs, chrt wht shrp opa, incr gry  
silty calc dolo stn,

dolo, silty calc dolo stn, gry med gry bec drkr,  
f vf xln gran gritty, silty,

dolo drk gry f vf xln silty gritty dns gran gry  
drk gry dolo silts, tr chrt dull gry tan shrp frsh  
opa

dolo silty dolostn med drk gry, vf xln gran  
gritty silty, shlr drk gry blk silty gritty dolo

dolo, silty sli calc dolo stn, drk gry, vf xln,  
gritty silty blk ang pcs, incr drk gry sli blk  
silty shls

dolo silty dolo f vf xln, dns hrd blk, med to  
drk gry, silty gritty, arg, shl drk med dk gry  
silty gritty

dolo silty dolo f vf xln blk ang dns hrd silty  
gritty, calc in prt, tr rare wht shrp frsh opa  
chrt shard

dolo stn, drk gry, f vf xln gran silty, calc, dns  
hrd, blk ang pcs, shls gry silty gritty calc

1st crm off wht tan f sli med xln blk ang sub  
chlky pcs, crs calc xln fill, tr foss frags, tr min  
fill, tr pyritic, tr glau, tr chrt wht shrp frsh  
opa (first found in 5090' spl) 5100' spl aa with  
shl gry, gry green, silty gritty,

1st crm dull wht sli gry/green tint, f vf xln dns  
massive hrd blk ang pcs, tr crs calc xln fill, tr  
sub chlky, tr glau, spls wsh semi wht.

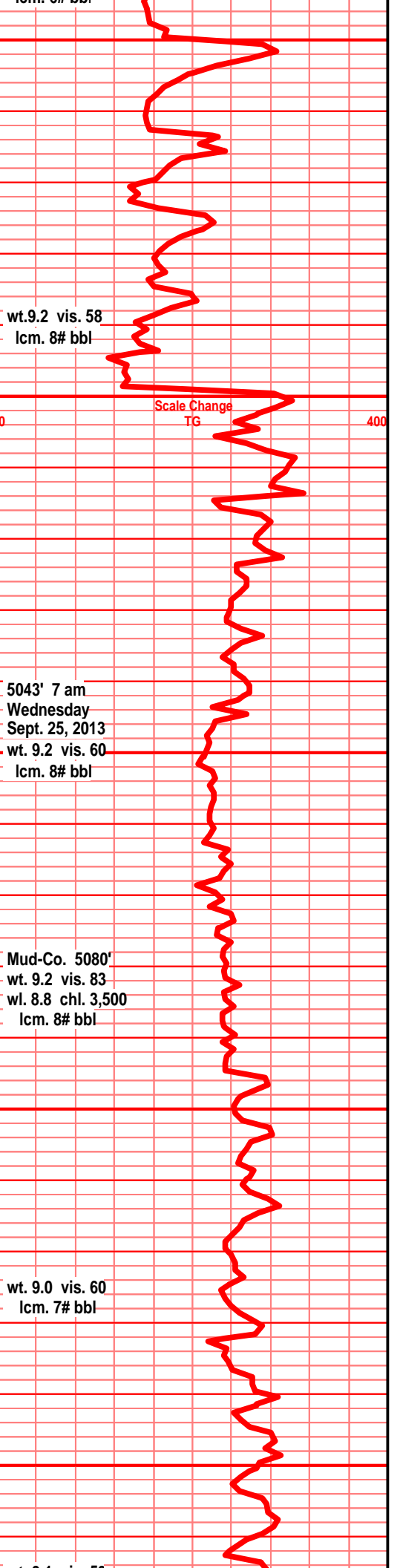
1st crm dull wht sli gry/green tint, f vf xln dns  
hrd blk ang pcs, sub chlky in prt, tr crs calc  
xln fill, spls wsh semi wht

shl lt gry, tr brn, tr med gry silty gritty, soft  
pasty on brk

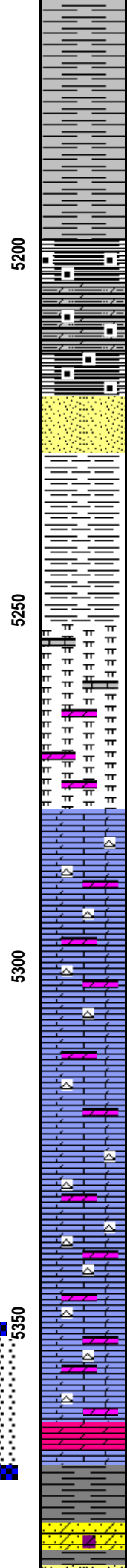
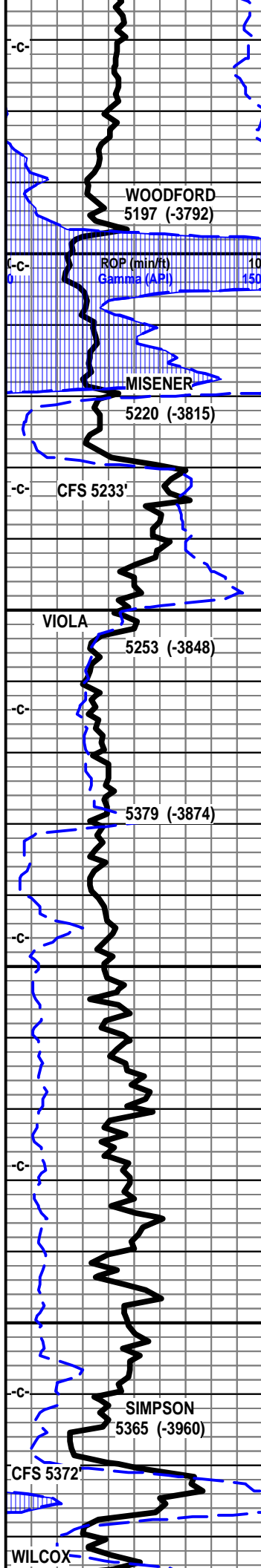
shl lt-med gry silty gritty, w/snd grn inclu, tr  
pyritic,

shl gry med gry, tr brownish, silty gritty, vfn  
snd grn inclu, tr pyritic, tr blk carb flecks, ddrk  
reddish blk, silty gritty, gas bubs on  
break/smash

shl gry med to drk gry, some blk, silty gritty,







soft grn bedded/banded

shl gry, med to drk gry, brownish blk, bedded, banded silty gritty

shl gry dkr gry blk, silty gritty, soft, gran in prt tr gas bubs, tr pyritic, beds/banded

shl drk gry, mstly blk, drk brn, deep brownish blk, tr blk carb text, silty gritty, blk ang soft pcs, pyritic, dull min copper grains, abun gas bubs, filmy cond shows.

shl drk gry blk, deep red/brn/blk, blk ang pcs, sli silty dolo in prt, soft gran in prt, pyritic, abun gas bubs, filmy show

sst wht clr semi frosty clstrs, f sli med grnd, sub ang to ang grns in prt, prly to well srtd, crs ang snd grn inclu, sub fria to tite, quartziti text in some, NS, tr clay clasts, mineral fill, tr pyritic fill, clstrs mstly blk ang hrd, shl gry/green soft

shl lt med gry, gry green, blk hrd pcs, tr gritty, silty

dolo, silty dolo stn, lt gry f xln gran soft chlky mushy, silty gritty, tr calc,

dolo silty gritty dolo shls, silts, gry tan tr lt brn, soft gran mushy, gritty, sli chlky, spls ws wht

dolo, lt gry tan tr lt brn silty gritty, soft gran, shls lt gry tan dolo silty gritty, soft, chlky, spls wsh wht

lst off wht lt gry mott f sli med xln blk ang dns pcs, crs xln in prt, pyritic, tr inter xln por, mstly dns tite, chrty in prt, chrt wht gry shrp frsh opa

lst wht dull wht f med xln blk ang dns, w/crs calc xln faces, gd inter xln por, pyritic inclu, lst, sli dolo in prt, off wht lt gry mott, f sli med xln blk ang dns hrd pcs, pyritic, tr chrt, chrt off wht lt gry shrp frsh opa

lst tan gry mott f sli med xln, blk ang pyritic tr crs xln pcs, pyritic inclu, lst, dolo in prt, tan dull tan brn f sli med xln, blk ang dns hrd chrty, chrt dull tan shrp frsh semi opa, pyritic foss inclu, dolo tan brn mott, f xln gran soft chlky gritty,

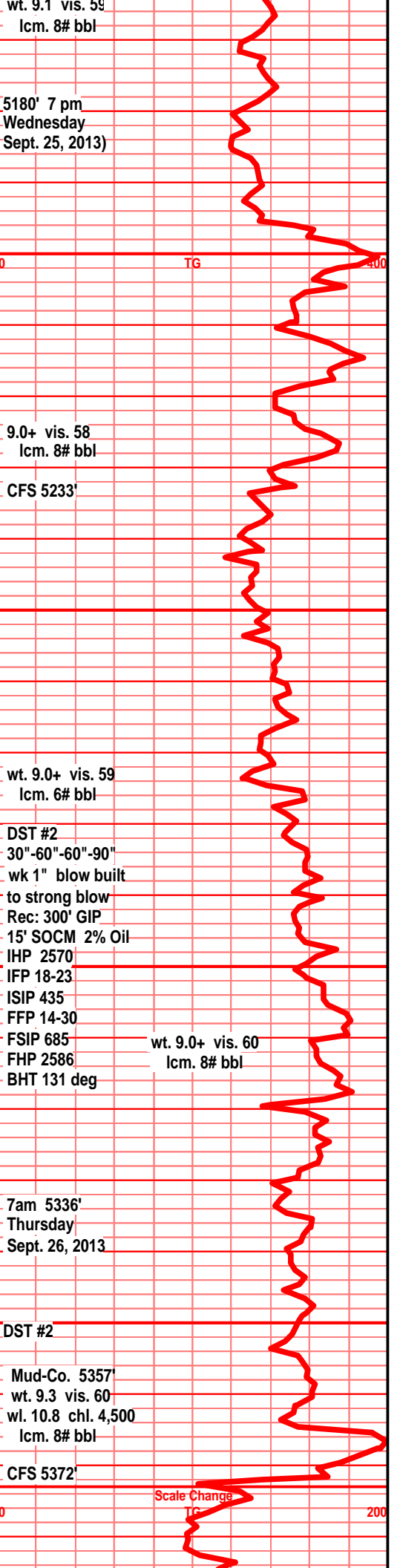
lst, dolo in prt, gry tan lt brn mott, f sli med xln in prt, tr soft sub chlky in prt, gran blk ang pcs, chrty in prt, chrt dull tan brn shrp frsh semi opa,

lst, dolo in prt, gry tan off wht mott, f sli med xln dns hrd ang blk pcs, gran soft sub chlky in prt, chrty, chrt gry dull tan shrp frsh opa,

dolo drk tan brn f sli med xln, gran sli suc text, sndy gritty text, snd grn inclu, tr sub chlky, tr inter xln por, mstly soft mushy, brn stain, tr gas bubs & filmy SFO on break, odor??

shl gry green teal green, sst gry, green tint, dolo, f grnd, sub rded, prly srtd, w/cem silic cem pyritic, dns tite

sst clr frosty tan clstrs, f grnd, sub ang tr



wt. 9.1 vis. 59  
lcm. 8# bbl

5180' 7 pm  
Wednesday  
Sept. 25, 2013)

9.0+ vis. 58  
lcm. 8# bbl

wt. 9.0+ vis. 59  
lcm. 6# bbl

DST #2  
30"-60"-60"-90"  
wk 1" blow built  
to strong blow  
Rec: 300' GIP  
15' SOCM 2% Oil  
IHP 2570  
IFP 18-23  
ISIP 435  
FFP 14-30  
FSIP 685  
FHP 2586  
BHT 131 deg

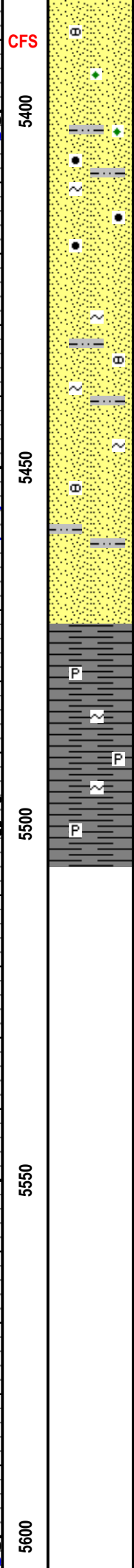
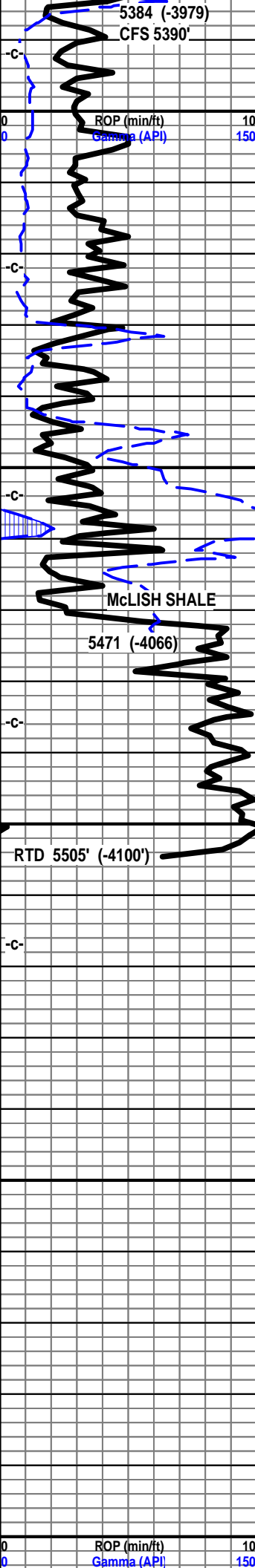
wt. 9.0+ vis. 60  
lcm. 8# bbl

7am 5336'  
Thursday  
Sept. 26, 2013

DST #2

Mud-Co. 5357'  
wt. 9.3 vis. 60  
wl. 10.8 chl. 4,500  
lcm. 8# bbl

Scale Change  
TG



5384 (-3979)  
CFS 5390'

ROP (min/ft)  
Gamma (API)

5400

5450

5500

5550

5600

ROP (min/ft)  
Gamma (API)

5384 (-3979)  
CFS 5390'

5400

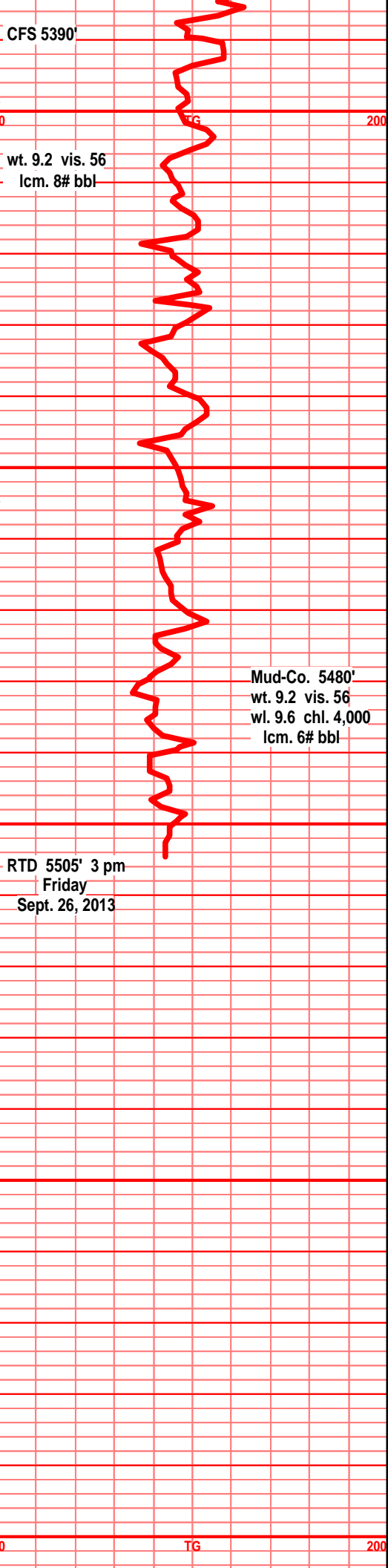
5450

5500

5550

5600

ROP (min/ft)  
Gamma (API)

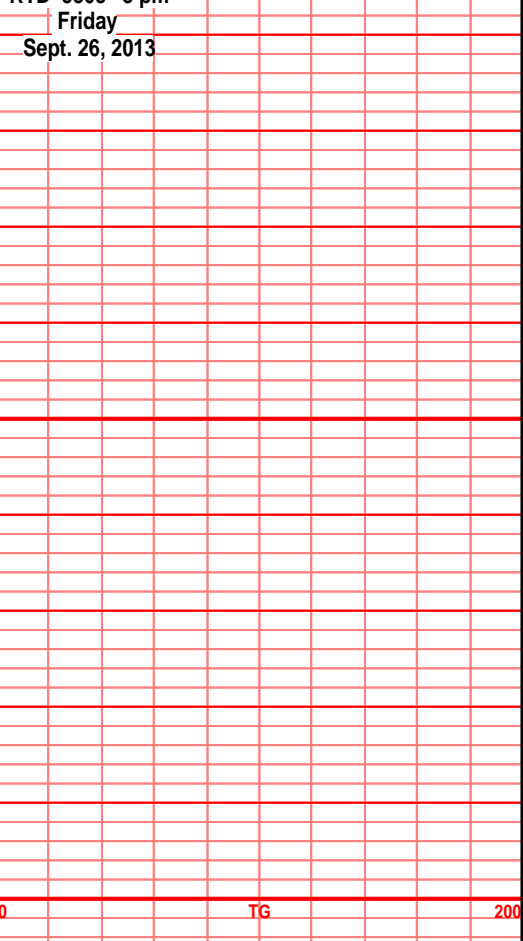


CFS 5390'

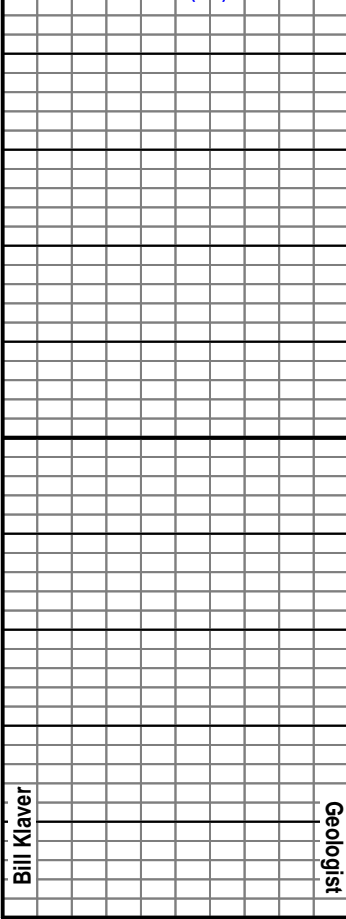
wt. 9.2 vis. 56  
lcm. 8# bbl

Mud-Co. 5480'  
wt. 9.2 vis. 56  
wl. 9.6 chl. 4,000  
lcm. 6# bbl

RTD 5505' 3 pm  
Friday  
Sept. 26, 2013

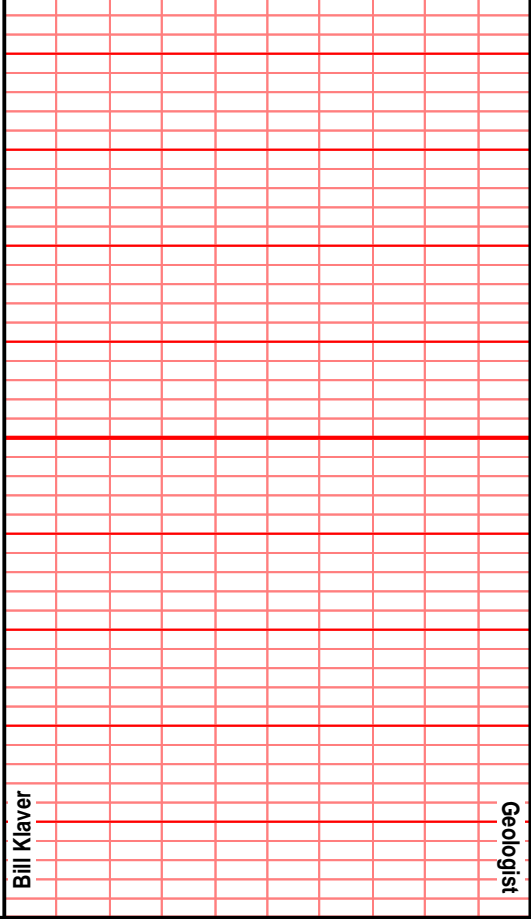


TG



5650  
00

Woolsey Operating Company  
 Platt GU #6  
 2045' FSL & 1920' FWL  
 Approx. C NE SW  
 Section 10-TWP 35S-Rge 12W  
 Hardtner Field  
 Barber County, Kansas  
 API# 15-007-24070-00-00



Bill Klaver

Geologist

Bill Klaver

Geologist