

KEVIN L. KESSLER
CONSULTING PETROLEUM GEOLOGIST
(316) 522-7338

OPERATOR : MULL DRILLING COMPANY, INC.
LEASE : BROWN TRUST WELL # : 1 - 12
LOCATION : 922' FSL & 494' FEL
SEC: 12 TWP : 16 S RGE : 32 W
COUNTY : SCOTT STATE : KANSAS

ELEVATION
KB : 2945'
GL : 2936'
MEASUREMENTS FROM
KB

CONTRACTOR : DUKE DRILLING RIG # 4
COMM : 09 / 19 / 2013 **COMP : 10 / 01 / 2013**
RTD : 4700 **LOG TD : 4699**
SAMPLES SAVED FROM : 3800 **TO : RTD**
GEOLOGICAL SUPERVISION FROM : 3800 **TO : RTD**
MUD UP : 3700 **TYPE MUD : CHEMICAL**

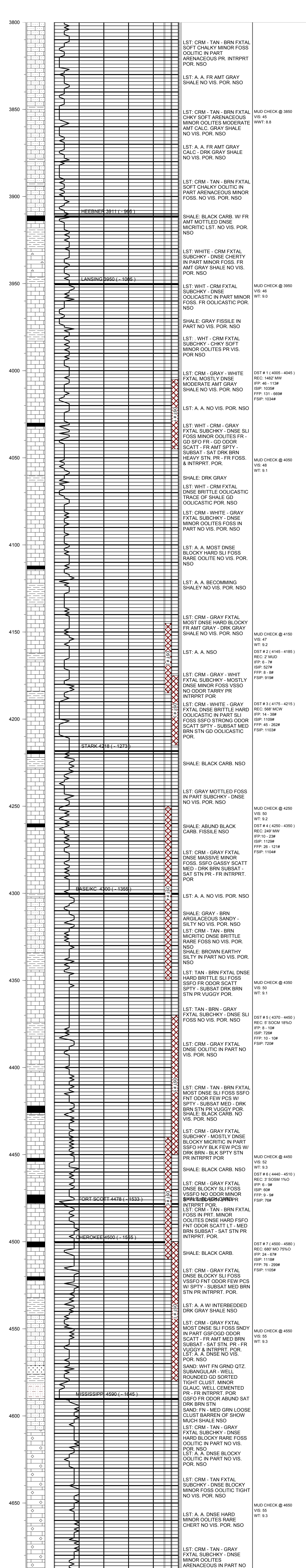
CASING RECORD
SURFACE :
8 5/8" @ 210'
PRODUCTION :
5 1/2" @ 4700'

ELECTRICAL SURVEYS:

FORMATION	TOP	LOG	DATUM	TOP	SAMPLE	DATUM	STRUCT. COMP.
HEEBNER	3911		- 966	3911		- 966	+ 08
LANSING	3950		- 1005	3950		- 1005	+ 08
STARK	4218		- 1273	4218		- 1273	+ 11
BASE/ KC	4300		- 1355	4300		- 1355	+ 11
FORT SCOTT	4478		- 1533	4478		- 1533	+ 16
CHEROKEE	4500		- 1555	4500		- 1555	+ 18
MISSISSIPPI	4590		- 1645	4590		- 1645	+ 27

REFERENCE WELL FOR STRUCTURAL COMPARISON :
RITCHIE EXPLORATION # 1 - 13 'A' CARPENTER SEC 13 - T 16 S - R 32 W SCOTT COUNTY KANSAS

CDL/CNL
DIL
MICRO
SONIC



COMMENTS:

5 1/2" PRODUCTION CASING WAS SET
TO
FURTHER EVALUATE THE PRODUCTIVITY OF THIS WELL

KEVIN L. KESSLER