



DRILL STEM TEST REPORT

Prepared For: **American Warrior Inc**

PO Box 399
Garden City KS 67846

ATTN: Cecil O'Brate

20-19s-21w Ness,KS

Wiedeman-Dianne Unit #1

Start Date: 2013.08.02 @ 20:55:48

End Date: 2013.08.03 @ 05:00:57

Job Ticket #: 54264 DST #: 1

Trilobite Testing, Inc
PO Box 362 Hays, KS 67601
ph: 785-625-4778 fax: 785-625-5620

Printed: 2013.08.05 @ 11:19:57



TRILOBITE TESTING, INC.

DRILL STEM TEST REPORT

American Warrior Inc
 PO Box 399
 Garden City KS 67846
 ATTN: Cecil O'Brate

Wiedeman-Dianne Unit #1
20-19s-21w Ness,KS
 Job Ticket: 54264 **DST#: 1**
 Test Start: 2013.08.02 @ 20:55:48

GENERAL INFORMATION:

Formation: **Miss**
 Deviated: No Whipstock: ft (KB)
 Time Tool Opened: 23:19:58
 Time Test Ended: 05:00:57
 Interval: **4393.00 ft (KB) To 4408.00 ft (KB) (TVD)**
 Total Depth: 4408.00 ft (KB) (TVD)
 Hole Diameter: 7.88 inches Hole Condition: Fair
 Test Type: Conventional Bottom Hole (Initial)
 Tester: Ray Schwager
 Unit No: 70
 Reference Elevations: 2283.00 ft (KB)
 2277.00 ft (CF)
 KB to GR/CF: 6.00 ft

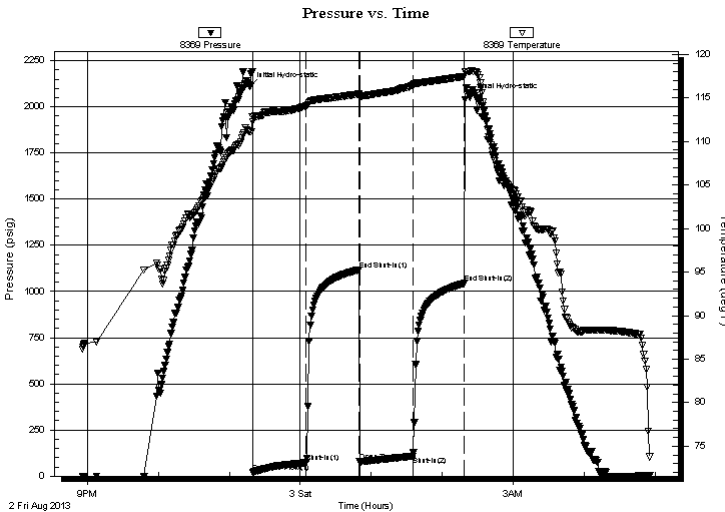
Serial #: 8369

Inside

Press @ Run Depth: 108.00 psig @ 4400.00 ft (KB) Capacity: 8000.00 psig
 Start Date: 2013.08.02 End Date: 2013.08.03 Last Calib.: 2013.08.03
 Start Time: 20:55:48 End Time: 04:55:57 Time On Btm: 2013.08.02 @ 23:17:13
 Time Off Btm: 2013.08.03 @ 02:23:42

TEST COMMENT: 45-IFP-w k to strg in 42 min
 45-ISIP-no bl bk
 45-FFP-w k to strg in 35 min
 45-FSIP-surface bl bk

PRESSURE SUMMARY



Time (Min.)	Pressure (psig)	Temp (deg F)	Annotation
0	2109.86	111.13	Initial Hydro-static
3	21.82	112.29	Open To Flow (1)
48	73.83	114.10	Shut-In(1)
93	1116.73	115.46	End Shut-In(1)
93	78.18	115.08	Open To Flow (2)
138	108.00	116.49	Shut-In(2)
182	1043.76	117.47	End Shut-In(2)
187	2048.80	118.04	Final Hydro-static

Recovery

Length (ft)	Description	Volume (bbl)
30.00	MGO 20%G20%M60%O	0.15
235.00	CO	2.48
0.00	400'GIP	0.00

Gas Rates

Choke (inches)	Pressure (psig)	Gas Rate (Mcf/d)



**TRILOBITE
TESTING, INC.**

DRILL STEM TEST REPORT

TOOL DIAGRAM

American Warrior Inc
PO Box 399
Garden City KS 67846
ATTN: Cecil O'Brate

Wiedeman-Dianne Unit #1
20-19s-21w Ness,KS
Job Ticket: 54264 **DST#: 1**
Test Start: 2013.08.02 @ 20:55:48

Tool Information

Drill Pipe:	Length: 4253.00 ft	Diameter: 3.80 inches	Volume: 59.66 bbl	Tool Weight:	2200.00 lb
Heavy Wt. Pipe:	Length: 0.00 ft	Diameter: 0.00 inches	Volume: 0.00 bbl	Weight set on Packer:	25000.00 lb
Drill Collar:	Length: 120.00 ft	Diameter: 2.25 inches	Volume: 0.59 bbl	Weight to Pull Loose:	75000.00 lb
			<u>Total Volume: 60.25 bbl</u>	Tool Chased	0.00 ft
Drill Pipe Above KB:	8.00 ft			String Weight: Initial	65000.00 lb
Depth to Top Packer:	4393.00 ft			Final	66000.00 lb
Depth to Bottom Packer:	ft				
Interval between Packers:	15.00 ft				
Tool Length:	43.00 ft				
Number of Packers:	2	Diameter: 6.75 inches			

Tool Comments:

Tool Description	Length (ft)	Serial No.	Position	Depth (ft)	Accum. Lengths
-------------------------	--------------------	-------------------	-----------------	-------------------	-----------------------

Change Over Sub	1.00			4366.00	
Shut In Tool	5.00			4371.00	
Hydraulic tool	5.00			4376.00	
Jars	5.00			4381.00	
Safety Joint	2.00			4383.00	
Packer	5.00			4388.00	28.00 Bottom Of Top Packer
Packer	5.00			4393.00	
Stubb	1.00			4394.00	
Perforations	6.00			4400.00	
Recorder	0.00	8369	Inside	4400.00	
Recorder	0.00	8700	Outside	4400.00	
Perforations	5.00			4405.00	
Bullnose	3.00			4408.00	15.00 Bottom Packers & Anchor

Total Tool Length: 43.00



**TRILOBITE
TESTING, INC.**

DRILL STEM TEST REPORT

FLUID SUMMARY

American Warrior Inc
PO Box 399
Garden City KS 67846
ATTN: Cecil O'Brate

Wiedeman-Dianne Unit #1
20-19s-21w Ness,KS
Job Ticket: 54264 **DST#: 1**
Test Start: 2013.08.02 @ 20:55:48

Mud and Cushion Information

Mud Type: Gel Chem	Cushion Type:	Oil API: 40 deg API
Mud Weight: 9.00 lb/gal	Cushion Length: ft	Water Salinity: ppm
Viscosity: 54.00 sec/qt	Cushion Volume: bbl	
Water Loss: 10.35 in ³	Gas Cushion Type:	
Resistivity: ohm.m	Gas Cushion Pressure: psig	
Salinity: 8300.00 ppm		
Filter Cake: 1.00 inches		

Recovery Information

Recovery Table

Length ft	Description	Volume bbl
30.00	MGO 20%G20%M60%O	0.148
235.00	CO	2.477
0.00	400'GIP	0.000

Total Length: 265.00 ft Total Volume: 2.625 bbl

Num Fluid Samples: 0 Num Gas Bombs: 0 Serial #:

Laboratory Name: Laboratory Location:

Recovery Comments:

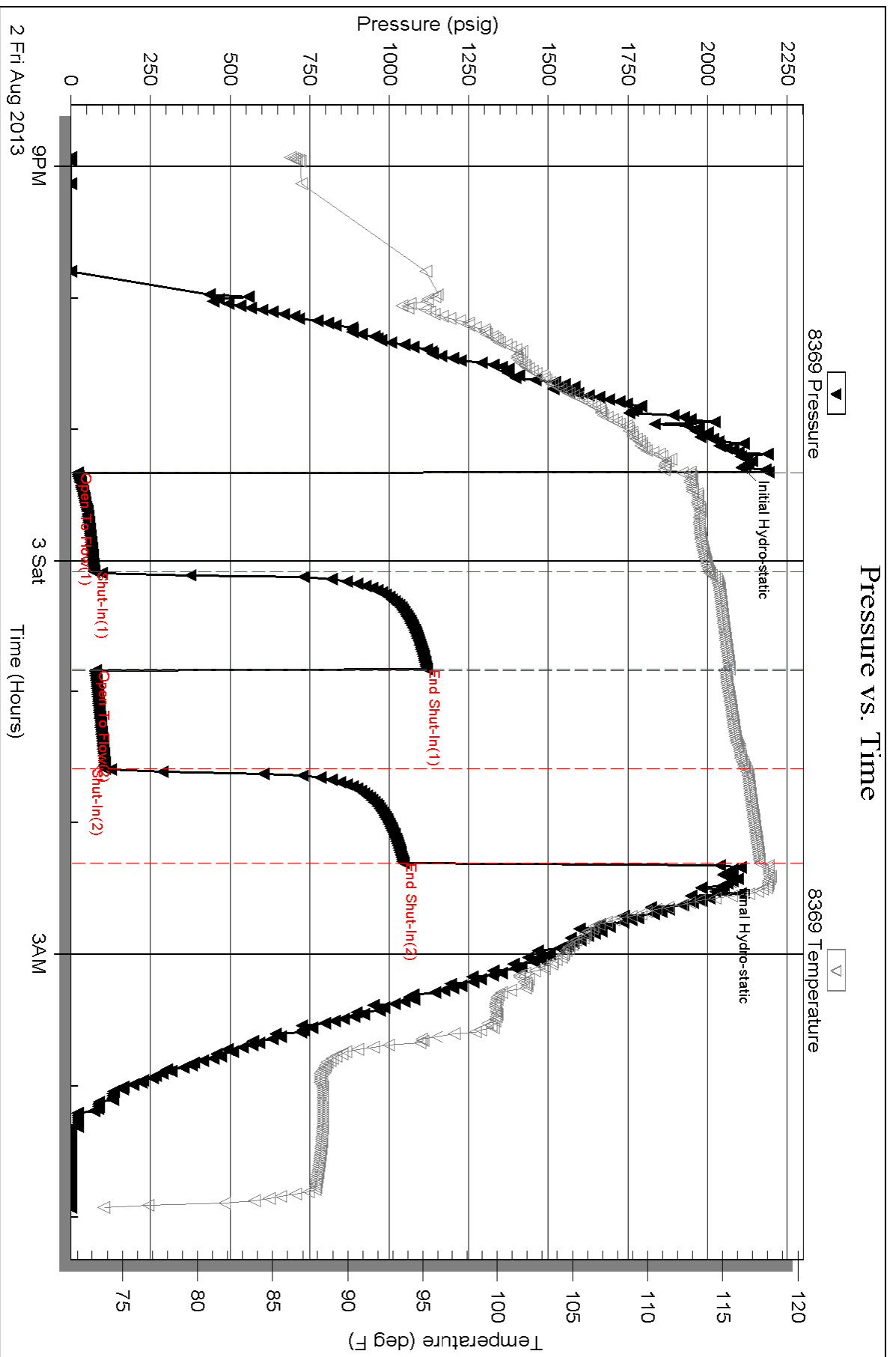
Serial #: 8369

Inside

American Warrior Inc

20-19s-21w Ness, KS

DST Test Number: 1



Triobite Testing, Inc

Ref. No: 54264

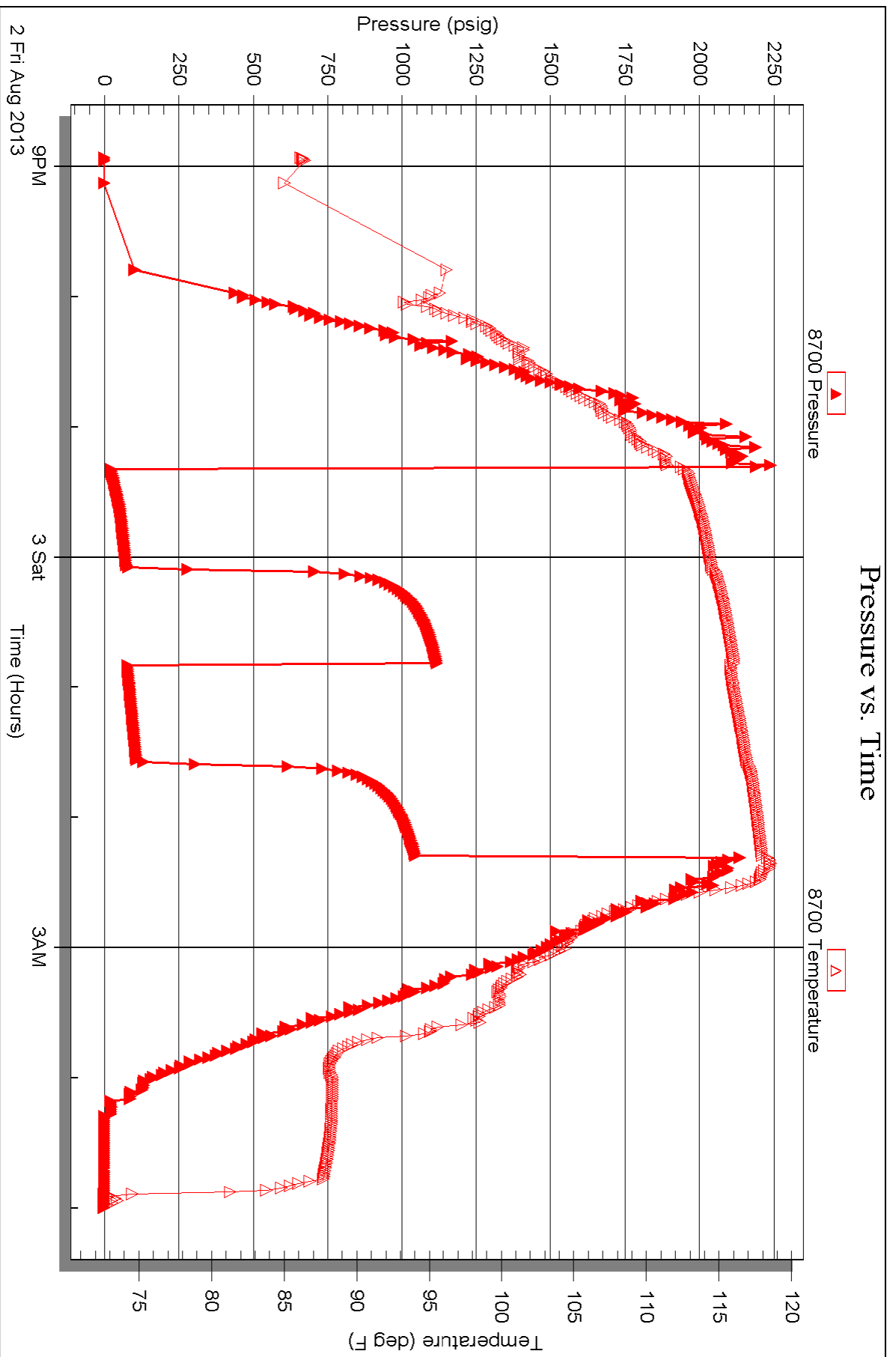
Printed: 2013.08.05 @ 11:20:00

Serial #: 8700

Outside American Warrior Inc

20-19s-21w Ness, KS

DST Test Number: 1





TRILOBITE TESTING INC.

1515 Commerce Parkway • Hays, Kansas 67601

Test Ticket

NO. 54264

Well Name & No. Wiedeman-Dianne Unit #1 Test No. 1 Date 8-2-13
 Company AMERICAN WARRIOR INC Elevation 2283 KB 2277 GL
 Address 3118 Cummings Rd, PO Box 399 Garden City, Ko 67846
 Co. Rep / Geo. JASON ALM Rig PETROMARK
 Location: Sec. 20 Twp. 19^s Rge. 21^w Co. NeSS State Ks

Interval Tested 4393-4408 Zone Tested MISS
 Anchor Length 15 Drill Pipe Run 4253 Mud Wt. 9.2
 Top Packer Depth 4388 Drill Collars Run 120 Vis 54
 Bottom Packer Depth 4393 Wt. Pipe Run - WL 10.4
 Total Depth 4408 Chlorides 8300 ppm System LCM -

Blow Description IFP - WEAK TO STRONG IN 42 MIN
ISIP - NO BLOW
FFP - WEAK TO STRONG IN 35 MIN
FSIP - SURFACE BLOWBACK

Rec	Feet of	%gas	%oil	%water	%mud
<u>400</u>	<u>GIP</u>				
<u>235</u>	<u>CO</u>				
<u>30</u>	<u>M60</u>	<u>20</u>	<u>60</u>		<u>20</u>

Rec Total 265 BHT 117 Gravity 40 API RW - @ - °F Chlorides - ppm

(A) Initial Hydrostatic <u>2109</u>	<input checked="" type="checkbox"/> Test 1250	T-On Location <u>1805</u>
(B) First Initial Flow <u>21</u>	<input checked="" type="checkbox"/> Jars 250	T-Started <u>2055</u>
(C) First Final Flow <u>73</u>	<input checked="" type="checkbox"/> Safety Joint 75	T-Open <u>2320</u>
(D) Initial Shut-In <u>1116</u>	<input type="checkbox"/> Circ Sub	T-Pulled <u>0220</u>
(E) Second Initial Flow <u>78</u>	<input type="checkbox"/> Hourly Standby	T-Out <u>0500</u>
(F) Second Final Flow <u>108</u>	<input checked="" type="checkbox"/> Mileage <u>112 RT</u> 173.60	Comments _____
(G) Final Shut-In <u>1043</u>	<input type="checkbox"/> Sampler	
(H) Final Hydrostatic <u>2048</u>	<input type="checkbox"/> Straddle	<input type="checkbox"/> Ruined Shale Packer

Initial Open 45
 Initial Shut-In 45
 Final Flow 45
 Final Shut-In 45

Shale Packer
 Extra Packer
 Extra Recorder
 Day Standby
 Accessibility

Sub Total 1748.60

Total 1748.60
 MP/DST Disc't _____

Approved By _____ Our Representative RAY SCHWAGER Thank you

Trilobite Testing Inc. shall not be liable for damaged of any kind of the property or personnel of the one for whom a test is made, or for any loss suffered or sustained, directly or indirectly, through the use of its equipment, or its statements or opinion concerning the results of any test, tools lost or damaged in the hole shall be paid for at cost by the party for whom the test is made.