



**TRILOBITE TESTING, INC.**

# DRILL STEM TEST REPORT

Toto Energy  
 25815 OakRidge DR  
 Spring TX 77380  
 ATTN: Terry Madden/Sean De

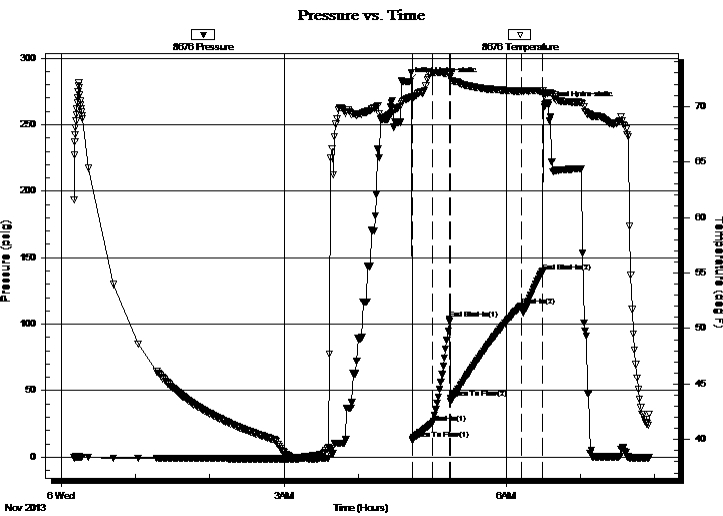
**26-32-5 Cowley KS**  
**Miller #1**  
 Job Ticket: 52447 **DST#: 1**  
 Test Start: 2013.11.06 @ 00:09:46

## GENERAL INFORMATION:

Formation: **Admire**  
 Deviated: No Whipstock: ft (KB)  
 Test Type: Conventional Bottom Hole (Initial)  
 Time Tool Opened: 04:44:10 Tester: Chris Staats  
 Time Test Ended: 07:56:10 Unit No: #47  
 Interval: **620.00 ft (KB) To 660.00 ft (KB) (TVD)** Reference Elevations: 1331.00 ft (KB)  
 Total Depth: 660.00 ft (KB) (TVD) 1321.00 ft (CF)  
 Hole Diameter: 7.88 inches Hole Condition: Fair KB to GR/CF: 10.00 ft

**Serial #: 8676 Outside**  
 Press @ Run Depth: 113.48 psig @ 621.00 ft (KB) Capacity: 8000.00 psig  
 Start Date: 2013.11.06 End Date: 2013.11.06 Last Calib.: 2013.11.06  
 Start Time: 00:09:46 End Time: 07:56:10 Time On Btm: 2013.11.06 @ 04:40:55  
 Time Off Btm: 2013.11.06 @ 06:31:25

**TEST COMMENT:** IF: Weak blow 1/4"  
 IS: No blow back  
 FF: Strong blow BOB 1 min  
 FS: No blow back



## PRESSURE SUMMARY

Time (Min.)	Pressure (psig)	Temp (deg F)	Annotation
0	282.42	70.75	Initial Hydro-static
4	13.60	70.78	Open To Flow (1)
19	25.56	73.00	Shut-In(1)
34	103.58	72.95	End Shut-In(1)
34	44.13	72.86	Open To Flow (2)
92	113.48	71.34	Shut-In(2)
109	139.60	71.38	End Shut-In(2)
111	264.64	71.03	Final Hydro-static

## Recovery

Length (ft)	Description	Volume (bbl)
0.00	60 GIP	0.00
240.00	G,M 3%gas 97%mud	1.18

## Gas Rates

Choke (inches)	Pressure (psig)	Gas Rate (Mcf/d)



**TRILOBITE  
TESTING, INC.**

# DRILL STEM TEST REPORT

**FLUID SUMMARY**

Toto Energy

**26-32-5 Cowley KS**

25815 OakRidge DR  
Spring TX 77380

**Miller #1**

Job Ticket: 52447

**DST#: 1**

ATTN: Terry Madden/Sean De

Test Start: 2013.11.06 @ 00:09:46

## Mud and Cushion Information

Mud Type: Gel Chem

Cushion Type:

Oil API:

deg API

Mud Weight: lb/gal

Cushion Length:

ft

Water Salinity:

ppm

Viscosity: sec/qt

Cushion Volume:

bbbl

Water Loss: in<sup>3</sup>

Gas Cushion Type:

Resistivity: ohm.m

Gas Cushion Pressure:

psig

Salinity: ppm

Filter Cake: inches

## Recovery Information

Recovery Table

Length ft	Description	Volume bbl
0.00	60 GIP	0.000
240.00	G,M 3%gas 97%mud	1.180

Total Length: 240.00 ft

Total Volume: 1.180 bbl

Num Fluid Samples: 0

Num Gas Bombs: 0

Serial #:

Laboratory Name:

Laboratory Location:

Recovery Comments:

Serial #: 8676

Outside Tolo Energy

Miller #1

DST Test Number: 1

