

3550

Ls-tan-gry, fn XIn, slt oolitic

Ls-tan, fn XIn, friable

3600

Ls-gry-lt brn, fn-sub XIn, Dns

Heebner Sh. 3633 (-1548)

Sh- blk, carb

Toronto 3648 (-1563)

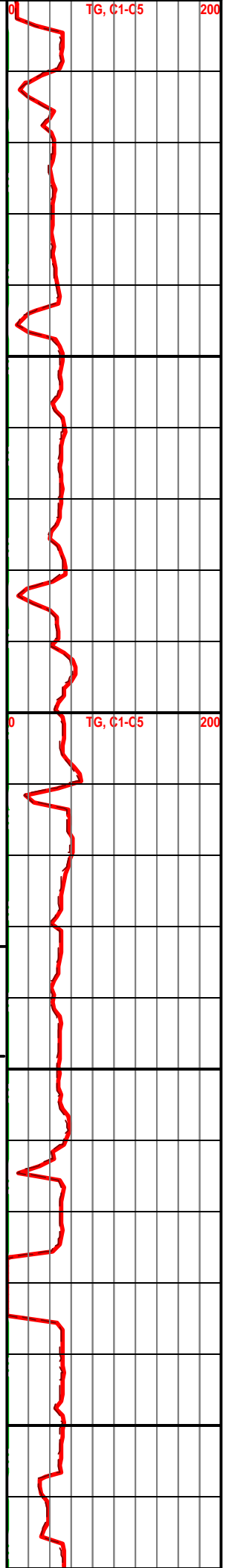
Ls- tan-gry, fn-sub XIn, Dns

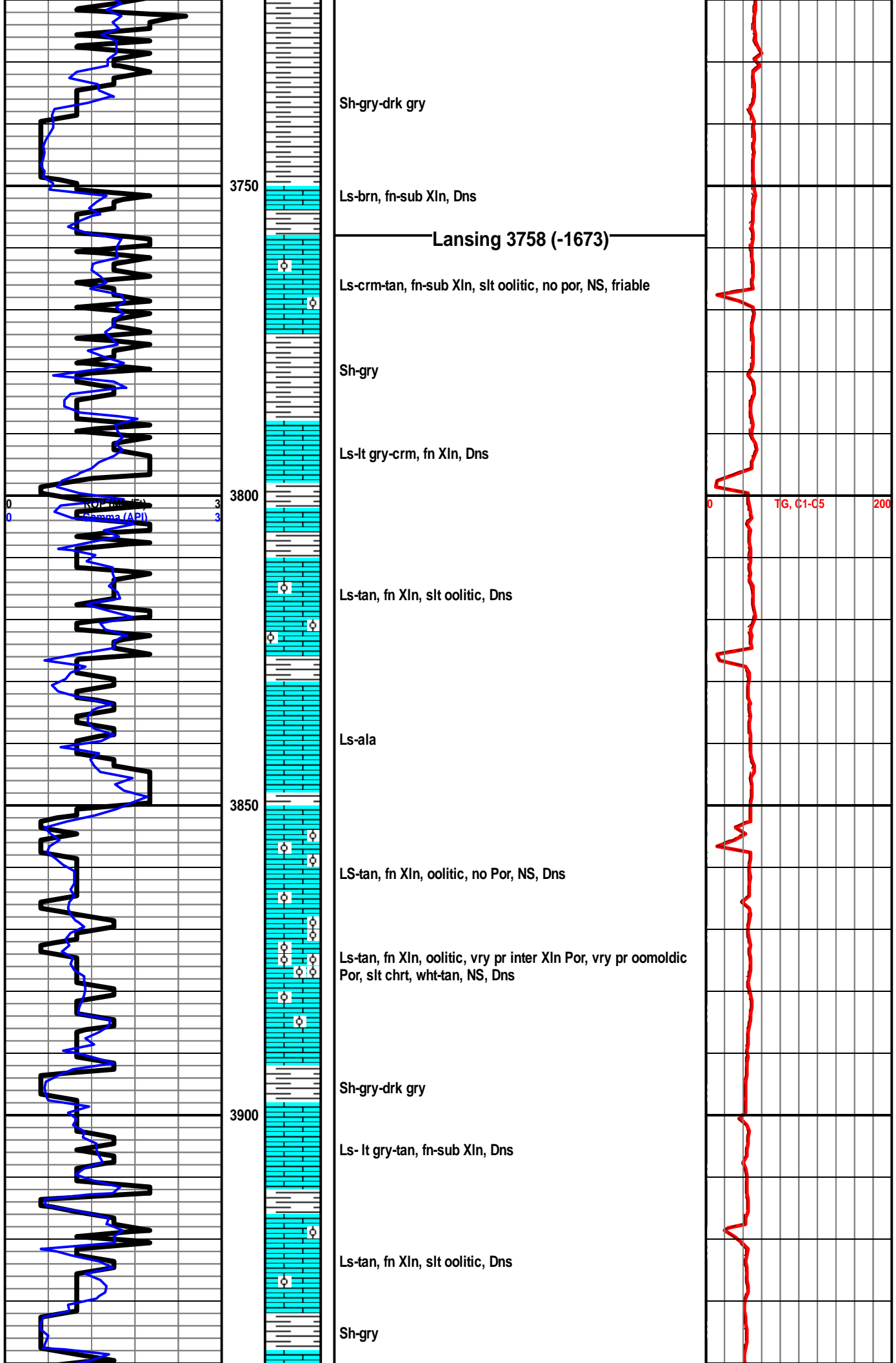
Sh-gry-reddish brn, silty

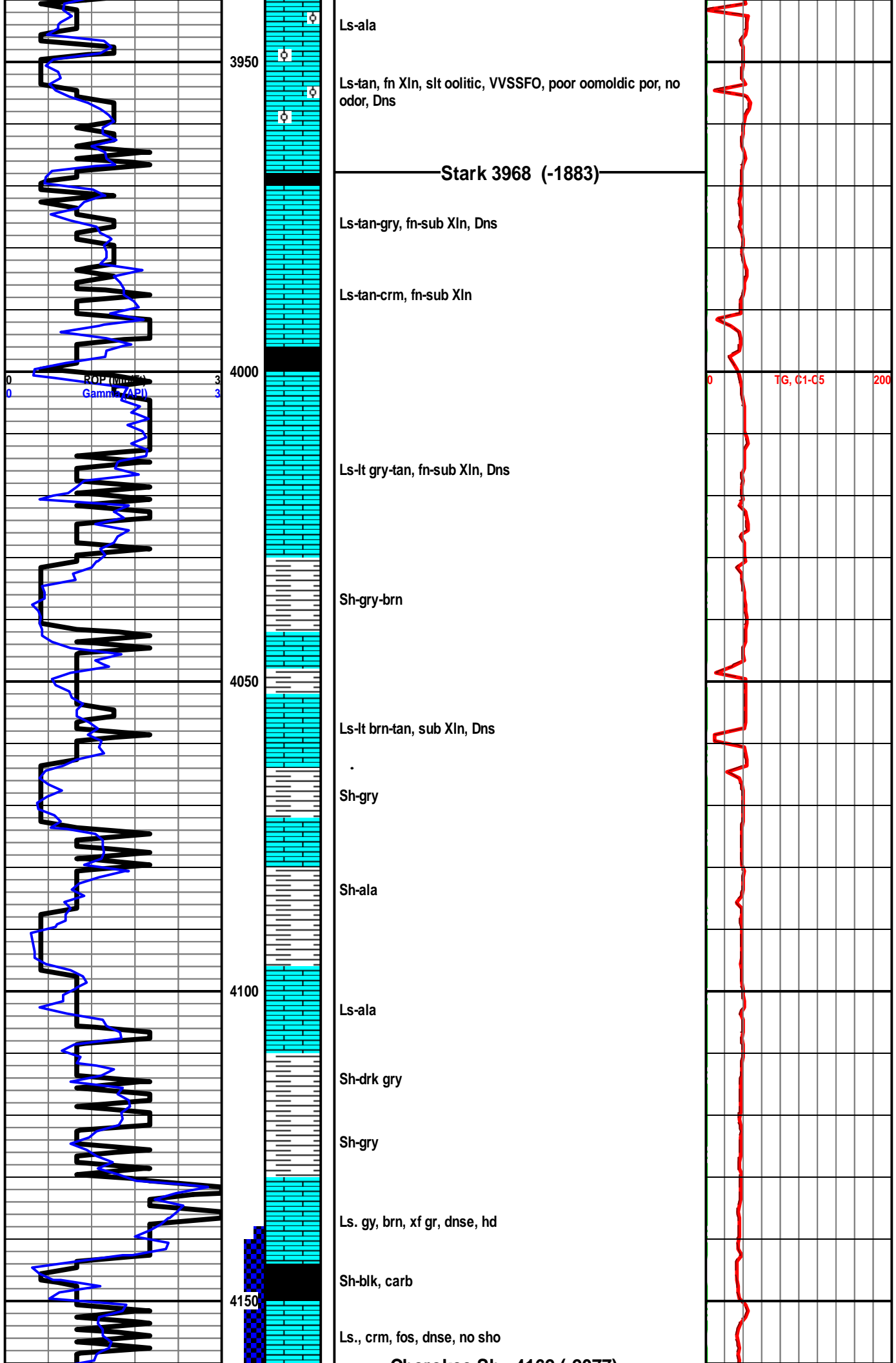
Sh-gry, slt sandy, lt gry, vry fn grn, Dns

3700

Sh-gry-drk gry, micaceous







Cherokee Sh. 4162 (-2077)

Sh-blk, carb

rr Ss-vf gr, clr, mod srted, pred barren, SSFO upon crush-lt brown, fri, no odr

Cht., wh, yel, ornge, sharp, fresh - occ weath, frac?, sme gils stn, NSFO

Sh., varic, mottled

Cong, varic, p srted, sb rd, sme breccia, p-fr intgran por, soft, frac, cherty, SSFO, no odr

Cong., frac, fri, gils stn, occ carb, ft odr,

Cht breccia, gy, grn, sb sat w/ gils stn, slow dk brn O bleed, hd, brittle, FSFO

rr Ss-vry fn grn, clr, mod sorted, shly, micaceous, fiable, barren, NS

Sh-gry-brn

Miss Chert 4228 (-2142)

Cht-wht, heavy weatherd, de vit, fair micro Por, Slow oil bleed, slt friable, weak odor, F to GSFO

Cht-ala

Kinderhook 4256 (-2171)

Ss-tan-lt gry, fn-md grn, well sorted, sub rnd, vry friable, GSFO, weak odor

Sh-gry-brn

Sh-ala

Viola 4298 (-2213)

Ls-lt gry, fn grn, vry friable, cht, wht, fresh

Ls-ala

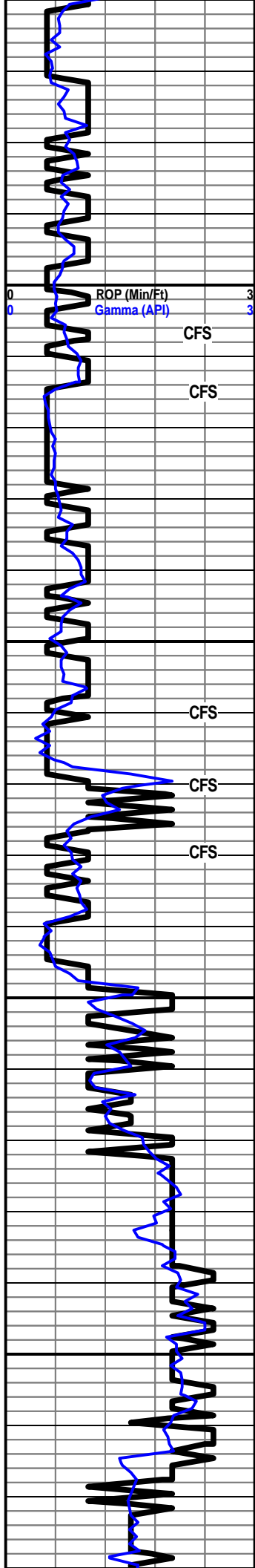
Ls-lt gry-gry, fn grn, cht, wht, fresh

Ls-lt-gry, fn grn, friable

80 U TG Kick

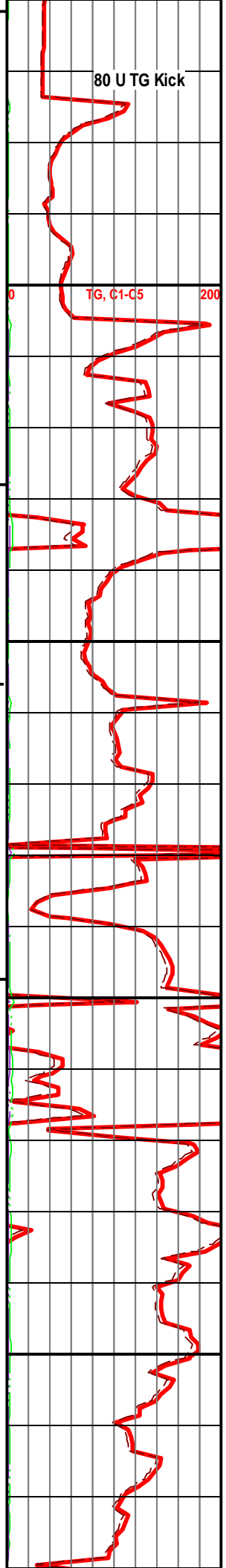
TG, C1-C5

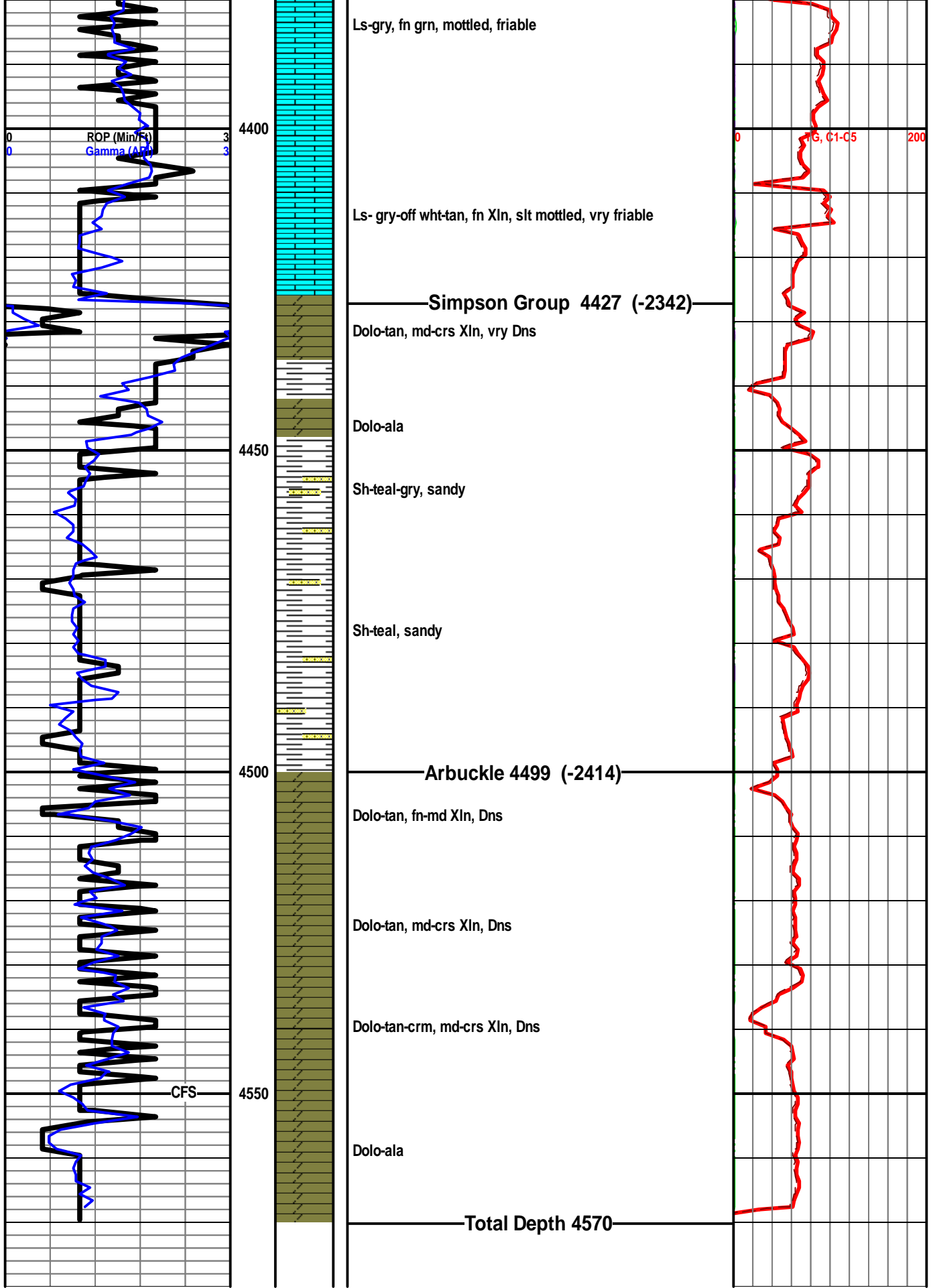
200



4200  
4250  
4300  
4350

CFS  
CFS  
CFS  
CFS  
CFS  
CFS  
CFS





Ls-gry, fn grn, mottled, friable

Ls- gry-off wht-tan, fn Xln, slt mottled, vry friable

**Simpson Group 4427 (-2342)**

Dolo-tan, md-crs Xln, vry Dns

Dolo-ala

Sh-teal-gry, sandy

Sh-teal, sandy

**Arbuckle 4499 (-2414)**

Dolo-tan, fn-md Xln, Dns

Dolo-tan, md-crs Xln, Dns

Dolo-tan-crm, md-crs Xln, Dns

Dolo-ala

**Total Depth 4570**

ROP (Min/Ft)  
Gamma (API)

G, C1-C5

CFS