

WELLSITE GEOLOGIST'S REPORT

J. R. Husted
Consulting Geologist



Scale 1:240 (5"=100') Imperial
Measured Depth Log

Well Name:	LangBahr No 2-26	Region:	Barton,Ks
Location:	SEC.26-17S.-R15S	Drilling Completed:	NOV. 11-2013
License Number:	15-009-25-902-0000		
Spud Date:	Nov.1-2013		
Surface Coordinates:	950' FWL,330'FNL,40' W. of C NE NW NW		

Bottom Hole Coordinates:	VERTICAL				
Ground Elevation (ft):	1992'	K.B. Elevation (ft):	2000'		
Logged Interval (ft):	1800'	To:	3750'	Total Depth (ft):	3750'
Formation:	LANSING/KS., ARBUCKLE				
Type of Drilling Fluid:	STARCH/CHEMICAL				

Printed by WellSight Log Viewer from WellSight Systems 1-800-447-1534 www.WellSight.com

ROCK TYPES

Anhy	Gyp	Shgy	Sandylms
Bent	Lmst	Siltst	Siltstn
Brec	Meta	Ss	Shlystls
Cht	Mrlst	Till	Sh
Clst	Salt	Carb sh	Slysh
Coal	Shcol	Dol	Lms
Congl		Dtd	
Dol		Gry sh	

ACCESSORIES

FOSSIL	MINERAL	STRINGER	TEXTURE
Algae	Anhy	Salt	Boundst
Amph	Arggrn	Sandy	Shale
Belm	Arg	Silt	Grysit
Bioclst	Bent	Sill	Lms
Brach	Bit	Sulphur	Sandylms
Bryozoa	Brecfrag	Tuff	Sh
Cephal	Calc	Chlorite	Siltstn
Coral	Carb	Dol	
Crin	Chtdk	Sand	
Echin	Chtlt	Silty	
Fish	Dol		
Foram	Feldspar	STRINGER	
Fossil	Ferrpel	Anhy	
Gastro	Ferr	Arg	
Oolite	Glaup	Bent	
Ostra	Gyp	Coal	
Pelec	Hvymn	Dol	
Pellet	Kaol	Gyp	
Pisolite	Marl	Ls	
Plant	Minxl	Mrlst	
Strom	Nodule	Siltstrg	
Fuss	Phos	Ssstrg	
Oornold	Pyr	Carbsh	
		Clystn	

OPERATOR

Company: F.G. HOLL COMPANY
Address: 9431 E. CENTRAL STE 100
WICHITA, KANSAS 67206

GEOLOGIST

Name: RENE HUSTEAD
Company: HUSTEAD EXPLORATION
Address: 600 N. WINWOOD ST
GARDNER, KANSAS 66030

DRILLING CONTRACTOR

DUKE RIG #2
DOUBLE DERRICK;DP-4.5 X H(20#);DC 6.25" X 2.25" X 480.73 FT; KELLY BUSHING 8 FT ABOVE GROUND LEVEL;DION VASQUEZ (TOOL-PUSHER)

SURFACE CASING

SURFACE CASING SET AT 8 5/8 INCHES AT 1032' WITH 400 SAXS OF CEMENT
PRODUCTION CASING SET AT 4 1/2 INCHES AT 3748' WITH 200 SAXS OF CEMENT

GAS DETECTION

ANALOG UNIT MBC INC HW/CHROM (FROM 1600' TO 3750')

CIRCULATION SYSTEM

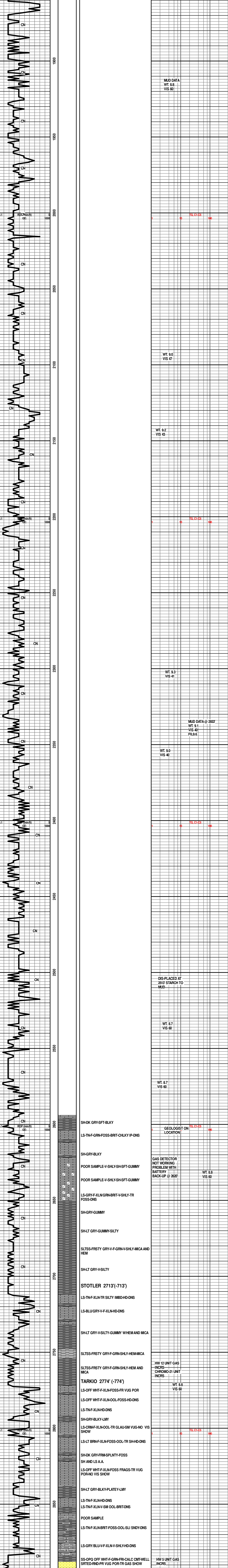
MUD PUMP: EWCO 14W400 ;BB/STRK .137; 60;BB/MIN 8.2;GAL/MIN 345;EARTH PITS;MUD CO SERVICE
INC-RIICK HUGHES-1-620-752-5425

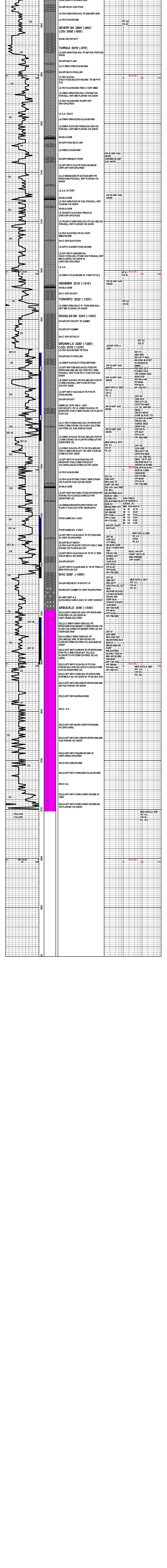
ELECTRIC LOGS

DUAL COMPENSATED POROSITY,MICRO LOG;DUAL INDUCTION LOG;FRAC FINDER; BORE HOLE COMPENSATED;SONIC LOG;MICRO RESISTIVITY LOG

COMPLETION

PRODUCTION CASING SET ON LANSING/KC





SH-GRY-BLKY-LMY-FOSS
 LS-TN-F-GRN-FOSS-OOL-TR SMD-BRIT-DNS
 LS-TN-F-XLN-HD-DNS
SEVY SH 2960' (-960')
LOG- 2558' (-958')
 SH-DK GRY-SPLNTY
TOPEKA 2979' (-979')
 LS-GRY-GRN-FOSS-OOL-TR SM VUG POR-GAS SHOW
 SH-GRY-BLKY-LMY
 LS-LT BRN-F-GRN-XLN-HD-DNS
 SH-GRY-BLKY-LMY
 LS-TN-F-XLN-SO
 CHLKY-FOSS-BLOCKY-HD-DNS-TR SM PYR XLS
 LS-TN-F-XLN-HD-DNS-TRSH LT GRV IMBD
 LS-CRM-F-GRN-FOSS-OOL-V-PR-SM VUG POR-DULL WHT MIN FLOR-NO VIS SHOW
 LS-TN-F-XLN-HD-DNS W/CHRT-OFF WHT-OPQ-FRSH
 LS A.A. CHLKY
 LS-CRM-F-GRN-SUCRO-GLAU-HD-DNS
 LS-CRM-F-XLN-FOSS FRAGS-ISO SM VUG POR-DULL WHT MIN FLOR-NO VIS SHOW
 SH-BLK-CARB
 SH-GRY-FOSS-BLKY-LMY
 LS-CRM-F-XLN-HD-DNS
 SH-GRY-FRM-BLKY-FOSS
 LS-OFF WHT-F-XLN-TR FOSS-HD-DNS/W/CHRT-OFF WHT-OPQ-FRSH
 LS-LT BRN-H-GRN-TR SH-FOSS-BRIT-PR INTER-GRN POR-DULL WHT FLOR-NO VIS SHOW
 LS A.A. W/CHRT
 SH-BLK-CARB
 LS-TN-F-GRN-FOSS-FR VUG POR-DULL WHT FLOR-NO VIS SHOW
 SH-BLK-CARB
 LS-TN-GRY-F-XLN-FOSS FRAGS-W/CHRT-GRY-OPQ-FOSS
 LS-TN-GRY-F-GRN-FOSS-OOL-FR OOL-MOLDIC POR-DULL WHT FLOR-NO VIS SHOW
 LS-TN-F-XLN-FOSS-TR SH LTGRY IMBD-HD-DNS
 SH-LT GRY-BLKY-FOSS
 LS-GRY-F-XLN-BRIT-FOSS-HD-DNS
 LS-OFF WHT-F-GRN-BRIT-SLI CHLKY-FOSS-OOL-TR SM VUG POR-DULL WHT MIN FLOR-NO VIS SHOW W/CHRT-GRY-OPQ-FRSH
 LS A.A.
 LS-CRM-V-F-XLN-HD-DNS W/ VSM PYR XLS
HEEBNER 3216' (-1216')
 SH-BLK-CARB
 SH-LT GRY-SPLNTY
TORONTO 3232' (-1232')
 LS-CRM-F-GRN-CHLKY IP-FOSS-DNS-DULL WHT MIN FLOR-NO VIS SHOW
DOUGLAS SH 3244' (-1244')
 SH-GRY-SFT-SPLNTY TO GUMMY
 SH-GRY-SFT-GUMMY
 SH-LT GRY-SFT-SILTY
BROWN LS 3280' (-1280')
LOG- 3278' (-1278')
 LS-TN-F-XLN-HD-DNS TR FOSS
 SH-GRY-BLKY-FOSS-LMY
 LS-CRM-F-XLN-CHLKY-FOSS-BRIT-DNS
 LS-OFF WHT-CRS-H-XLN-OOL-FOSS-PR INTER-GRN AND SM VUG POR-TR LT BRN STN-DULL WHT FLOR-TR LT FLSH CUT-GAS SHOW
 LS-CRM-F-XLN-OOL-FR OOL-MOLDIC POR-TR LT BRN STN-DULL WHT FLOR-TR FLSH CUT-FNT ODOR
 LS-OFF WHT-F-XLN-CHLKY-TR PYR-TR FOSS-HD-DNS
 SH-GRY-SPLNTY
 SAMPLES VERY SHLY- SHLT GRY-SPLNTY-TR LS-CRM-F-XLN-OOL-TR INTER-PRTR POR-LT BRN STN-NO VIS FLOR-TR FLSH CUT
 LS-LT GRY-F-GRN-FOSS-OOL-TR INTER-PRTR POR-LT BRN STN-NO VIS FLOR-V-GD STRM CUT-FREE OIL GAS BUB-GD ODOR
 LS-CRM-F-XLN-OOL-FR OOL-MOLDIC POR-TR LT BRN STN-NO VIS FLOR-FR STRM CUT-FNT ODOR-FREE OIL
 LS-CRM-F-XLN-OOL-FR TO GD OOL-MOLDIC POR-LT BRN STN-SCATT YEL WHT FLOR-GD STRM CUT-FNT ODOR
 LS-OFF WHT-F-XLN-FOSS-OOL-PR INTER-PRTR POR-LT BRN STN-SCATT YEL WHT FLOR-GD STRM CUT-FNT ODOR
 LS-TN-F-XLN-HD-DNS
 LS-TN-F-XLN-TR FRAC POR-LT BRN STN-NO VIS FLOR-FR FLSH CUT-NO ODOR
 SH-BLK-CARB
 LS-OFF WHT/TRN-F-GRN-V-FOSS-FR INTER-PRTR POR-NO VIS FLOR-GD STRM CUT-FNT ODOR-FREE OIL
 LS-CRM-M-GRN-INTER-GRN POR-NO VIS FLOR-LT FLSH CUT-V-FNT ODOR-SSFO
 POOR SAMPLES V-SHLY
 POOR SAMPLES -V-SHLY
 LS-OFF WHT-F-XLN-CHLKY IP-TR FOSS-DNS W/CHRT-TN-OPQ-FRSH
 SH-GRY-BLKY-WAXEY
 LS-TN-F-XLN-TR SH-PR TOFR PP POR-LT BRN STN-NO VIS FLOR-FLSH CUT
 LS-OFF WHT-F-XLN-CHLKY-W/ TR OF LT BRN STN IP-ASTLY NO SHOW
 SH-GRY-SPLNTY
 LS-OFF WHT-F-XLN-HD-DNS W/ TR OF FRAC-LT BRN STN-FLSH CUT
B/KC 3509' (-1509')
 SH-GRY-RED-BLKY IP-SPLNTY IP
 SH-RED-SFT-GUMMY W/CHRT-TN-OPQ-FRSH
 SH AND CHRT A.A.
 SLTSS-RED-F-GRN-V-SHLY W/CHRT CONTACT
ARBUCKLE 3546' (-1546')
 DOLO-GRY-F-GRN-OOL-SHLY-PR INTER-GRN POR-FREE OIL-GD ODOR W/CHRT-TRANS-OOL-FRSH
 DOLO-LT BRN-F-GRN-F-SMD-OOL-FR INTER-GRN POR-ABUNDNT LT BRN STN-NO VIS FLOR-V-GD STRM CUT-ABUNDNT FREE OIL-GD ODOR-GAS BUB
 DOLO-CRM-LT BRN-F-GRN-OOL-TR OOL-MOLDIC AND TR SM VUG-NO VIS FLOR-GD STRM CUT-FREE OIL-GAS BUB-GD ODOR
 DOLO-OFF WHT-F-GRN-PR TO FR INTER-GRN POR-TR LT BRN STN-SCATT YEL GLD FLOR-PR TO FR STRM CUT-FREE OIL-GD ODOR
 DOLO-OFF WHT-F-XLN-OOL-IP-TR VUG POR-DK BLK STN-YEL GLD FLOR-GD STRM CUT-GD ODOR-FREE OIL
 DOLO-OFF WHT-F-GRN-OOL-FR INTER-GRN POR-ASTLY NO VIS SHOW W/ TR DK BLK STN
 DOLO-OFF WHT-CRS-GRN-FR INTER-GRN AND SM VUG POR-NO VIS SHOW
 DOLO-OFF WHT-M-GRN-HD-DNS
 DOLO A.A.
 DOLO-OFF WHT-M-CRS GRN-PYR-HD-DNS W-CHRT-VARIG.
 DOLO-OFF WHT-CRS GRN-FR INTER-GRN AND VUG POR-NO VIS SHOW
 DOLO-OFF WHT-F-M-GRN-HD-DNS W/CHRT-VARIG-OPQ-FRSH
 DOLO-TN-F-GRN-HD-DNS
 DOLO-OFF WHT-F-GRN-SNDY-GLAU-HD-DNS
 DOLO A.A.
 DOLO-OFF WHT-F-GRN-V-SNDY-HD-DNS W/CHRT
 DOLO-OFF WHT-F-GRN-V-SNDY-HD-DNS-NO VIS FLOR-NO VIS SHOW
 MUD DATA @ 3750'
 WT 9.3
 VIS 58
 FIL 10.4

WT. 8.8	
VIS 43	
WT. 9.1	TG, CI, CS 140
VIS 53	1000
WT. 9.2	
VIS 55	
WT. 9.2	
VIS 57	
SHORT-TRIP @ 3285'	
	DST #1 3294'-3355' REC-20 FT MUD IBLWVK BLW BLT 3/4 INCHES IN 30MIN FBLWNO BLW FLSHED TOOL -WK SURGE DIED 30/60 15/30 SIP-226.4-196 IFP-66-69 FFP-69-72 HP-1739-1671
HW 25 UNIT GAS INCRS	
HW 10 UNIT GAS INCRS	
MUD DATA @ 3330'	
VIS 51	
FIL 8	
HW 30 UNIT GAS INCRS	
HW 25 UNIT GAS INCRS	
MUD DATA @ 3374'	
WT 9.3	
VIS 57	
FIL 9.2	
	DST #2 3355'-3374' REC-5 FT OIL SPOTTED MUD (1% OIL AND 99% MUD) IBLWV-WEAK SURF BLW BLT TO 3/4 INCH IN 30 MIN FBLWV-WK SURGE DIED 30/60 15/30 SIP-510-70 IFP-35-37 HP-1639-1688
	DST #3 3374'-3450' REC-35 FT OIL SPOTTED MUD (1% OIL AND 99% MUD) 145 FT GIP IBLWVK BLW 7.5 INCHES IN 30 MIN BOB IN 13 MIN
	DST #4 3450'-3470' REC-GAS TO SURF 120 H2O 320' (10% GAS AND OIL 90%) IBLWSTRING BLW BOB IN 1 MIN GAS TABLE FLW PERIOD 2 CHOKE 25 MIN-BLWVK YES MIN PSIA MCF/D 5/60/60 120 10 20 31.73 SIP-369-358 20 14 22.21 IFP-74-85 30 8.6 13.64 FFP-77-249 40 8.6 13.64 HP-1773-1633 50 9.0 14.28 HW-OFF CHART 100 PLUS
	DST #5 3470'-3517' 3 FT MUD IBLWVK SURF BLW 1/2 INCH INTO H2O FBLWV-WK SURGE NOT BLDING 15/30 15/45 SIP-54-65 IFP-51-52 FFP-52-56 HP-1753-1802
	DST #6 3555'-3571' REC-30 FT SPOTTED OIL CUT MUD IBLWVK BLW BLT 1/2 INCH IN BUCK FBLWV-WK- SURF BLW STAYED STEADY 15/30 30/60 SIP-1033-1046 IFP-39-42 FFP-43-45 HP-1796-1686
	DST #7 3570'-3602' REC-2160' H2O IBLWSTRING BLW BOB IN 1 MIN-BLWVK-WK SURF FBLWSTRING BLWBLT BOB IN 1 MIN-NO BLWVK- 5/60/30/60 IFP-789-949 FFP-822-1160 HP-1750-1721
	TG, CI, CS 140
	1000
	MUD DATA @ 3602'
	WT 9.3 VIS 58 FIL 10.0
	TG, CI, CS 140
	1000
	MUD DATA @ 3750'
	WT 9.3 VIS 58 FIL 10.4
	TG, CI, CS 140
	1000