



## DRILL STEM TEST REPORT

Prepared For: **FG Holl Company L.L.C**

9431 E Central Ste 100 Wichita KS  
67206+2563

ATTN: Rene Husted

### **Lang?Bahr Unit #2-26**

#### **26-17s-15w Barton**

Start Date: 2013.11.10 @ 05:55:00

End Date: 2013.11.10 @ 13:00:00

Job Ticket #: 18459                      DST #: 7

Superior Testers Enterprises LLC  
PO Box 138 Great Bend KS 67530  
1-800-792-6902

Printed: 2013.11.10 @ 13:14:16



# DRILL STEM TEST REPORT

FG Holl Company L.L.C

**26-17s-15w Barton**

9431 E Central Ste 100 Wichita KS 67206+2563

**Lang?Bahr Unit #2-26**

ATTN: Rene Husted

Job Ticket: 18459

**DST#: 7**

Test Start: 2013.11.10 @ 05:55:00

## GENERAL INFORMATION:

Formation: **Arbuckle**

Deviated: No Whipstock: ft (KB)

Time Tool Opened: 07:49:30

Time Test Ended: 13:00:00

Test Type: Conventional Bottom Hole (Initial)

Tester: Jared Scheck

Unit No: 3320-GReat Bend-47

**Interval: 3570.00 ft (KB) To 3602.00 ft (KB) (TVD)**

Reference Elevations: 2000.00 ft (KB)

Total Depth: 3602.00 ft (KB) (TVD)

1992.00 ft (CF)

Hole Diameter: 7.88 inches Hole Condition: Fair

KB to GR/CF: 8.00 ft

## Serial #: 6731

Press@RunDepth: 1159.92 psia @ ft (KB)

Capacity: 5000.00 psia

Start Date: 2013.11.10

End Date: 2013.11.10

Last Calib.: 2013.11.10

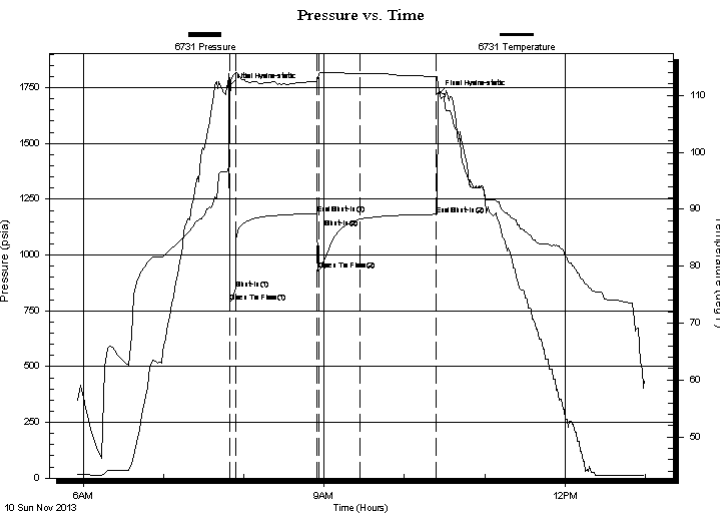
Start Time: 05:55:00

End Time: 13:00:00

Time On Btm: 2013.11.10 @ 07:48:00

Time Off Btm: 2013.11.10 @ 10:25:30

**TEST COMMENT:** 1st Opening 5 Minutes-Strong blow built bottom of bucket in 1 minutes  
 1st Shut-in 60 Minutes-Weak surface blow  
 2nd Opening 30 Minutes-Strong blow built bottom of bucket in 1 minute  
 2nd Shut-in 60 Minutes-No blow back



## PRESSURE SUMMARY

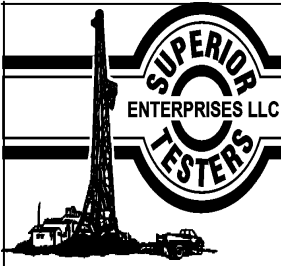
Time (Min.)	Pressure (psia)	Temp (deg F)	Annotation
0	1750.11	96.79	Initial Hydro-static
2	789.17	108.86	Open To Flow (1)
6	848.80	113.87	Shut-In(1)
67	1185.19	112.49	End Shut-In(1)
68	931.81	113.62	Open To Flow (2)
99	1159.92	113.84	Shut-In(2)
156	1182.43	113.32	End Shut-In(2)
158	1720.80	111.87	Final Hydro-static

## Recovery

Length (ft)	Description	Volume (bbl)
2160.00	w ater 10% mud 90% w ater	30.30
0.00	chlorides 28,000 resistivity .2@60degree	0.00

## Gas Rates

Choke (inches)	Pressure (psia)	Gas Rate (Mcf/d)



# DRILL STEM TEST REPORT

FG Holl Company L.L.C

**26-17s-15w Barton**

9431 E Central Ste 100 Wichita KS 67206+2563

**Lang?Bahr Unit #2-26**

ATTN: Rene Husted

Job Ticket: 18459

**DST#: 7**

Test Start: 2013.11.10 @ 05:55:00

## GENERAL INFORMATION:

Formation: **Arbuckle**

Deviated: No Whipstock: ft (KB)

Time Tool Opened: 07:49:30

Time Test Ended: 13:00:00

Test Type: Conventional Bottom Hole (Initial)

Tester: Jared Scheck

Unit No: 3320-Great Bend-47

**Interval: 3570.00 ft (KB) To 3602.00 ft (KB) (TVD)**

Reference Elevations: 2000.00 ft (KB)

Total Depth: 3602.00 ft (KB) (TVD)

1992.00 ft (CF)

Hole Diameter: 7.88 inches Hole Condition: Fair

KB to GR/CF: 8.00 ft

## Serial #: 8159

Press@RunDepth: 1183.59 psia @ ft (KB)

Capacity: 5000.00 psia

Start Date: 2013.11.10

End Date: 2013.11.10

Last Calib.: 2013.11.10

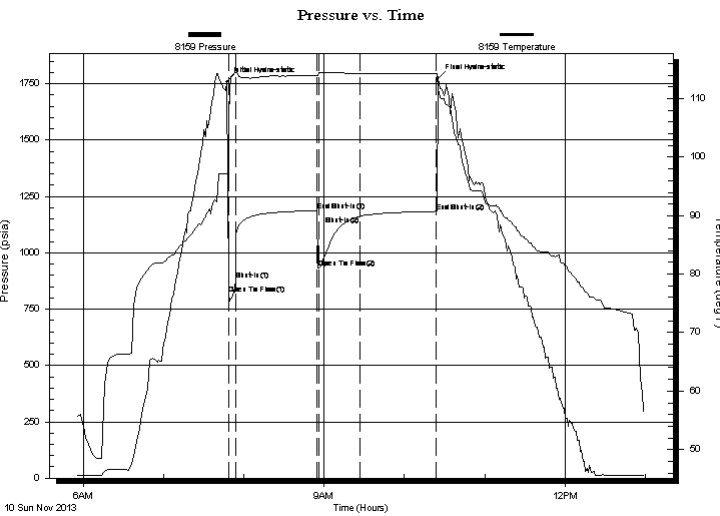
Start Time: 05:55:00

End Time: 13:00:00

Time On Btm: 2013.11.10 @ 07:47:30

Time Off Btm: 2013.11.10 @ 10:25:30

**TEST COMMENT:** 1st Opening 5 Minutes-Strong blow built bottom of bucket in 1 minutes  
 1st Shut-in 60 Minutes-Weak surface blow  
 2nd Opening 30 Minutes-Strong blow built bottom of bucket in 1 minute  
 2nd Shut-in 60 Minutes-No blow back



## PRESSURE SUMMARY

Time (Min.)	Pressure (psia)	Temp (deg F)	Annotation
0	1757.55	97.09	Initial Hydro-static
2	815.92	106.59	Open To Flow (1)
7	878.02	114.45	Shut-In(1)
68	1185.92	113.93	End Shut-In(1)
69	934.53	114.41	Open To Flow (2)
100	1161.97	114.36	Shut-In(2)
157	1183.59	114.27	End Shut-In(2)
158	1773.34	111.56	Final Hydro-static

## Recovery

Length (ft)	Description	Volume (bbl)
2160.00	w ater 10% mud 90% w ater	30.30
0.00	chlorides 28,000 resistivity .2@60degree	0.00

## Gas Rates

Choke (inches)	Pressure (psia)	Gas Rate (Mcf/d)



# DRILL STEM TEST REPORT

**TOOL DIAGRAM**

FG Holl Company L.L.C

**26-17s-15w Barton**

9431 E Central Ste 100 Wichita KS 67206+2563

**Lang?Bahr Unit #2-26**

Job Ticket: 18459

**DST#:7**

ATTN: Rene Husted

Test Start: 2013.11.10 @ 05:55:00

## Tool Information

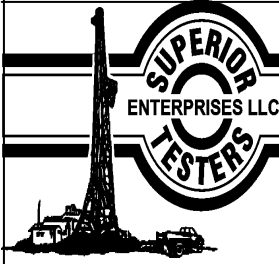
Drill Pipe:	Length: 3571.00 ft	Diameter: 3.80 inches	Volume: 50.09 bbl	Tool Weight: 1000.00 lb
Heavy Wt. Pipe:	Length: 0.00 ft	Diameter: 0.00 inches	Volume: 0.00 bbl	Weight set on Packer: 20000.00 lb
Drill Collar:	Length: 0.00 ft	Diameter: 0.00 inches	Volume: 0.00 bbl	Weight to Pull Loose: 65000.00 lb
			<u>Total Volume: 50.09 bbl</u>	Tool Chased 0.00 ft
Drill Pipe Above KB:	21.00 ft			String Weight: Initial 50000.00 lb
Depth to Top Packer:	3570.00 ft			Final 60000.00 lb
Depth to Bottom Packer:	ft			
Interval between Packers:	32.00 ft			
Tool Length:	52.00 ft			
Number of Packers:	2	Diameter: 6.75 inches		

Tool Comments: ruined packer

Tool Description	Length (ft)	Serial No.	Position	Depth (ft)	Accum. Lengths
------------------	-------------	------------	----------	------------	----------------

Shut-In Tool	5.00			3555.00	
Hydraulic Tool	5.00			3560.00	
Packer	5.00			3565.00	20.00 Bottom Of Top Packer
Packer	5.00			3570.00	
Anchor	27.00			3597.00	
Recorder	1.00	6731	Inside	3598.00	
Recorder	1.00	8159	Outside	3599.00	
Bullnose	3.00			3602.00	32.00 Bottom Packers & Anchor

**Total Tool Length: 52.00**



# DRILL STEM TEST REPORT

## FLUID SUMMARY

FG Holl Company L.L.C

**26-17s-15w Barton**

9431 E Central Ste 100 Wichita KS 67206+2563

**Lang?Bahr Unit #2-26**

Job Ticket: 18459

**DST#: 7**

ATTN: Rene Husted

Test Start: 2013.11.10 @ 05:55:00

### Mud and Cushion Information

Mud Type: Gel Chem

Cushion Type:

Oil API:

deg API

Mud Weight: 9.00 lb/gal

Cushion Length:

ft

Water Salinity:

ppm

Viscosity: 63.00 sec/qt

Cushion Volume:

dbl

Water Loss: 9.99 in<sup>3</sup>

Gas Cushion Type:

Resistivity: ohm.m

Gas Cushion Pressure:

psia

Salinity: 9300.00 ppm

Filter Cake: 1.00 inches

### Recovery Information

Recovery Table

Length ft	Description	Volume dbl
2160.00	w ater 10%mud 90%w ater	30.299
0.00	chlorides 28,000 resistivity .2@60degree	0.000

Total Length: 2160.00 ft      Total Volume: 30.299 dbl

Num Fluid Samples: 0

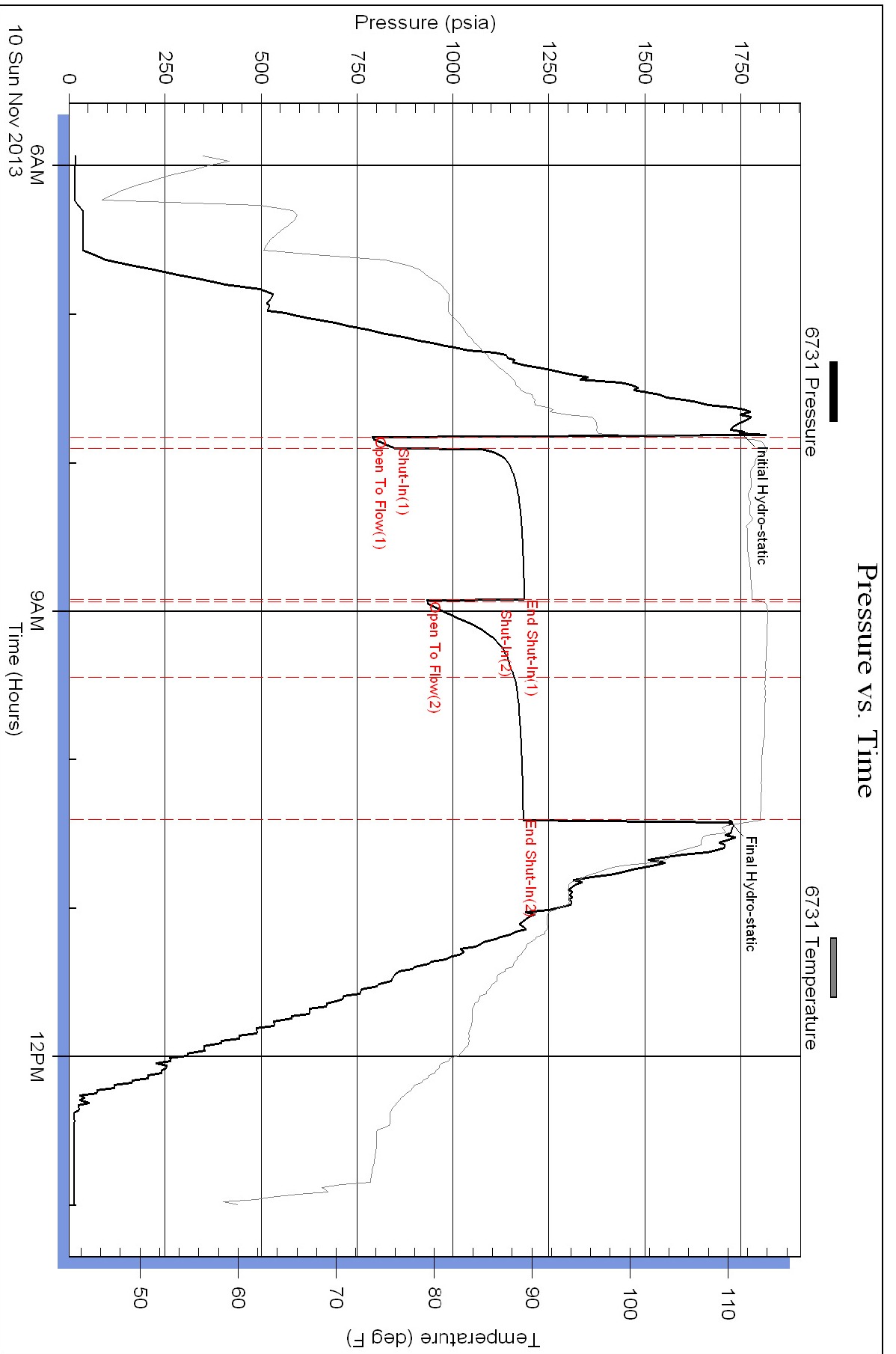
Num Gas Bombs: 0

Serial #:

Laboratory Name:

Laboratory Location:

Recovery Comments: chlorides 28,000 resistivity .2 @ 60 degrees/ruined packer



### Pressure vs. Time

