



**Natural Gas • Crude Oil  
Exploration & Production**

**McCOY PETROLEUM CORPORATION**

**Wichita, Kansas**

Scale 1:240 (5"=100') Imperial  
Measured Depth Log

Well Name: ECK 'V' #2-22  
Location: Sec. 22 - T32S - R10W, Barber County, KS  
License Number: API #: 15-007-24084  
Spud Date: September 24, 2013  
Surface Coordinates: C NW NE  
660' FNL & 1980' FEL  
Bottom Hole Coordinates:  
Ground Elevation (ft): 1462' K.B. Elevation (ft): 1471'  
Logged Interval (ft): 4250' To: 4398' Total Depth (ft): 4398' RTD 4396' LTD  
Formation: Mississippian  
Type of Drilling Fluid: Chemical/Polymer/Gel

Region: McGuire - Goemann

Drilling Completed: October 1, 2013

Printed by MUD.LOG from WellSight Systems 1-800-447-1534 www.WellSight.com

#### OPERATOR

Company: McCoy Petroleum Corporation, KCC License #5003  
Address: 8080 E. Central Ave., Suite 300  
Wichita, KS 67206

#### GEOLOGIST

Name: Evan Stone  
Company: McCoy Petroleum Corporation  
Address: 8080 E. Central Ave., Suite 300  
Wichita, KS 67206

#### CASING & DEVIATION

Spud at 1145 pm on 09/24/13. Drilled 12-1/4" hole to 230'. Ran 5 joints of new 23# 8-5/8" surface casing, tallied 212.54', set at 226.54' KB. Welded straps on bottom 3 joints. Cemented with 180 sks 60/40 POZ ;2% Gel; 3% CC; 1/4# CF. Plug down at 6:45 am on 09/25/13. Cement did circulate. Basic Cementing Ticket #07148.

Deviation Surveys Taken: @ 4938' = 3/4 degree



**TRILOBITE  
TESTING, INC.**

## DRILL STEM TEST REPORT

McCoy Petro. Corp.  
8080 E. Central Ste. 300  
Wichita, KS 67208-2388  
ATTN: Evan Stone

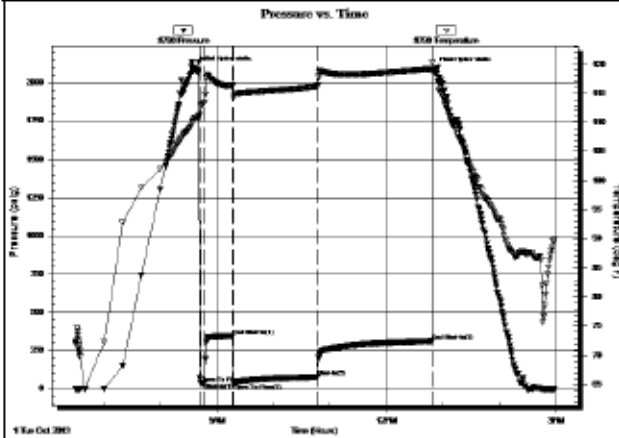
22/32s./10w. Barber Co.  
Eck V 2-22  
Job Ticket: 52457      **DST#: 1**  
Test Start: 2013.10.01 @ 06:29:41

### GENERAL INFORMATION:

Formation: **Miss**  
Deviated: No Whipstock: 0.00 ft (KB)  
Time Tool Opened: 08:42:26  
Time Test Ended: 14:57:58  
Interval: **4362.00 ft (KB) To 4398.00 ft (KB) (TVD)**  
Total Depth: 4398.00 ft (KB) (TVD)  
Hole Diameter: 7.88 inches Hole Condition: Fair  
Test Type: Conventional Bottom Hole (Initial)  
Tester: Ryan Reynolds  
Unit No: 48  
Reference Elevations: 1471.00 ft (KB)  
1462.00 ft (CF)  
KB to GR/CF: 9.00 ft

Serial #: 8790      Inside  
Press@RunDepth: 77.72 psig @ 4383.00 ft (KB)      Capacity: 8000.00 psig  
Start Date: 2013.10.01      End Date: 2013.10.01      Last Calib.: 2013.10.01  
Start Time: 06:29:46      End Time: 14:57:55      Time On Btrt: 2013.10.01 @ 08:35:11  
Time Off Btrt: 2013.10.01 @ 12:49:41

TEST COMMENT: IF: Strong blow . BOB @ 1min. No GTS.  
IS: No blow  
FF: Strong blow . BOB immed. GTS @ 9min. Guaged throughout.  
FSt: No blow .



### PRESSURE SUMMARY

Time (Min.)	Pressure (psig)	Temp (deg F)	Annotation
0	2095.86	110.46	Initial Hydro-static
8	38.12	112.88	Open To Flow (1)
12	38.24	113.38	Shut-In(1)
42	345.41	116.26	End Shut-In(1)
43	34.37	114.28	Open To Flow (2)
132	77.72	116.22	Shut-In(2)
253	313.44	119.18	End Shut-In(2)
255	2090.54	118.68	Final Hydro-static

### Recovery

Length (ft)	Description	Volume (bbl)
178.00	GCM 5%gas, 95%mud	0.88

### Gas Rates

	Choke (inches)	Pressure (psig)	Gas Rate (Mcf/D)
First Gas Rate	0.25	8.00	35.54
Last Gas Rate	0.25	13.00	43.47
Max. Gas Rate	0.25	15.00	48.64



**TRILOBITE  
TESTING, INC.**

## DRILL STEM TEST REPORT

GAS RATES

McCoy Petro. Corp.

22/32s./10w. Barber Co.

8080 E. Central Ste. 300  
Wichita, KS 67206-2366

Eck V 2-22

Job Ticket: 52457

DST#: 1

ATTN: Evan Stone

Test Start: 2013.10.01 @ 06:29:41

### Gas Rates Information

Temperature: 59 (deg F)  
Relative Density: 0.65  
Z Factor: 0.8

Gas Rates Table

Flow Period	Elapsed Time	Choke (inches)	Pressure (psig)	Gas Rate (Mcf/d)
2	10	0.25	8.00	35.54
2	20	0.25	12.00	41.88
2	30	0.25	14.00	45.05
2	40	0.25	15.00	46.64
2	50	0.25	14.00	45.05
2	60	0.25	13.00	43.47
2	70	0.25	13.00	43.47
2	80	0.25	13.00	43.47
2	90	0.25	13.00	43.47

Serial #: 8790

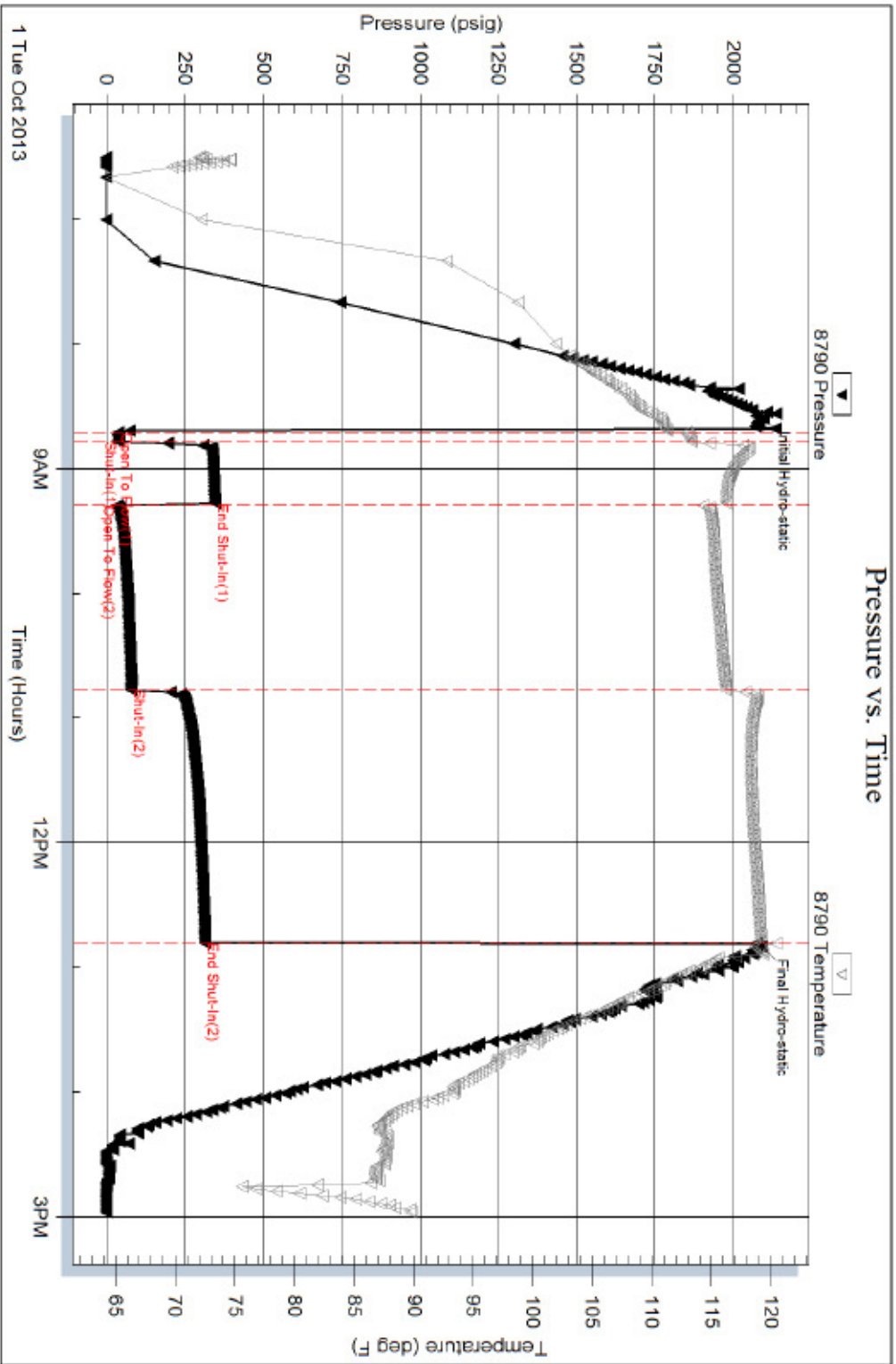
Inside

McCoy Petro. Corp.

Ex V 2-22

DST Test Number: 1

### Pressure vs. Time



**LEGEND**

**LITHOLOGY**

- Chert
- Dolomite
- Gypsum
- Limestone
- Cherty ls
- Sandy ls
- Salt
- Shale
- Shale green

- Shale red
- Carb shale
- Siltstone
- Sandstone

**MINERAL**

- Calcite
- Chert
- Glauconite
- Pyrite

- Sand
- Silt

**STRINGER**

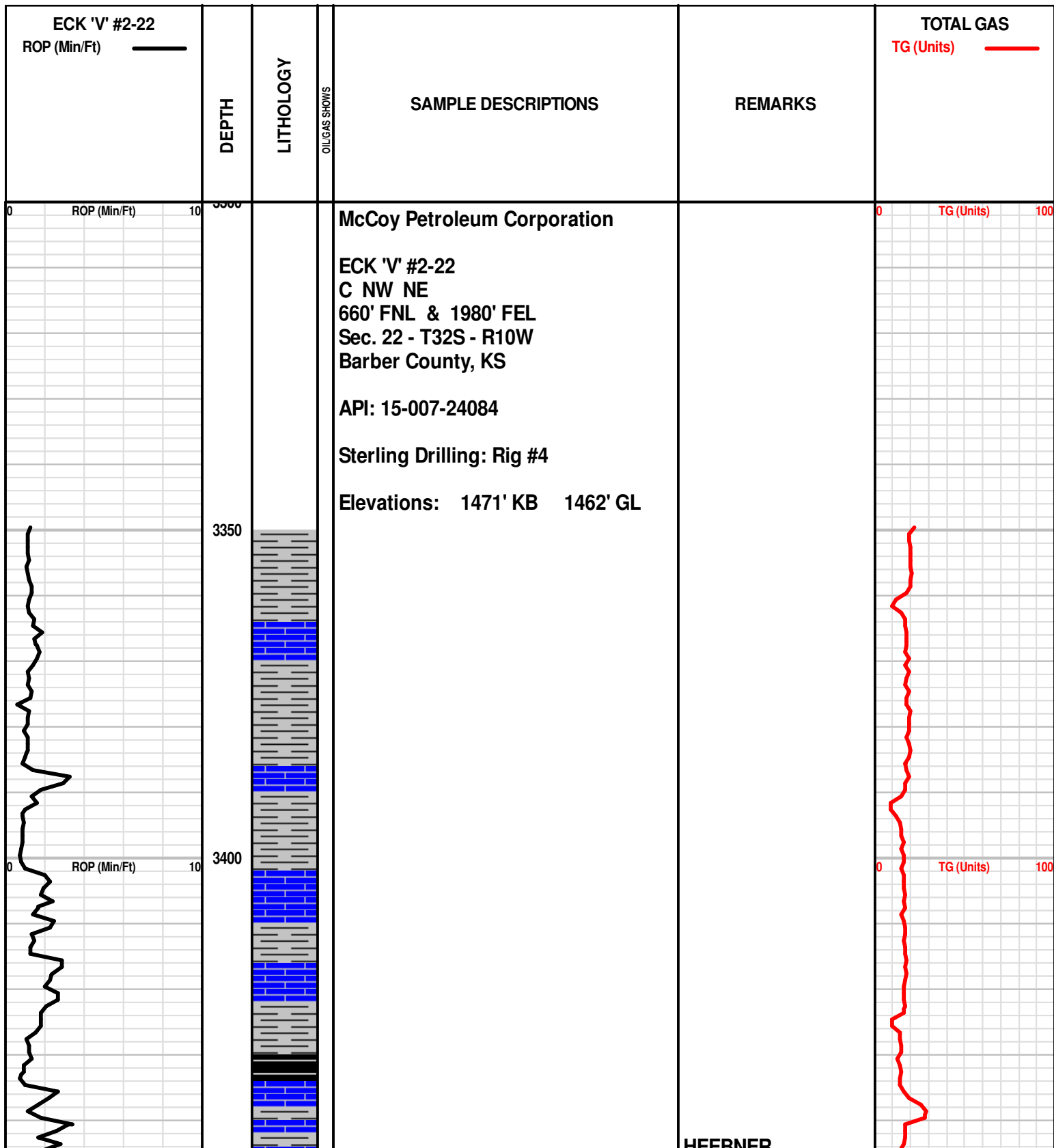
- Dolomite
- Gypsum
- Limestone
- Shale
- Siltstone
- Sandstone

**OIL/GAS SHOW**

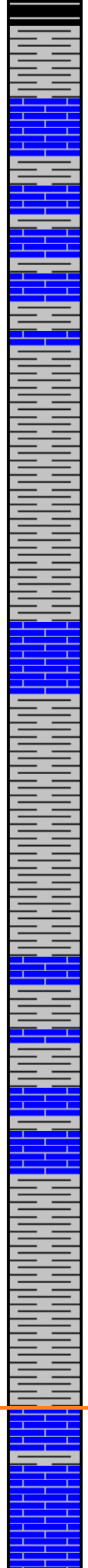
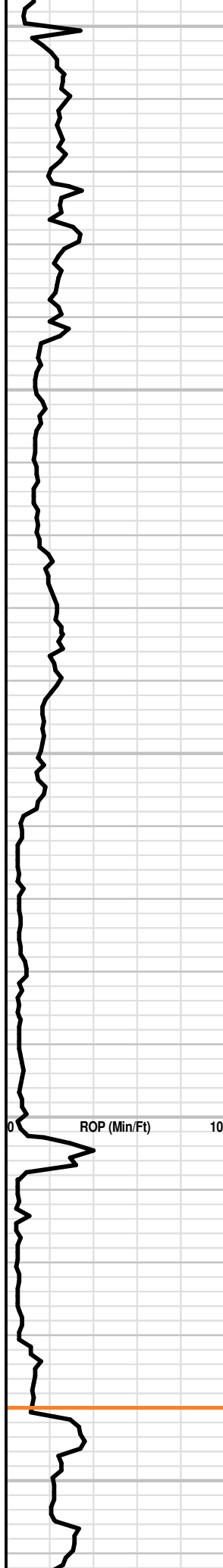
- Gas show
- Good
- Fair
- Poor
- Dead

**INTERVAL**

- Porosity



3450  
3500  
3550  
3600  
3650

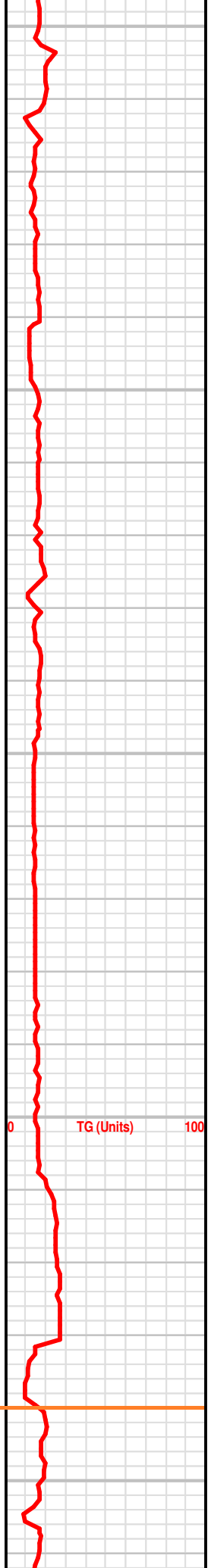


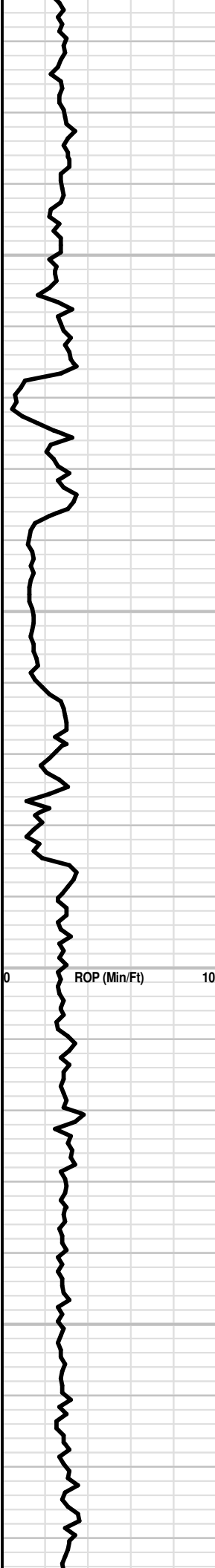
FIELDNET

3446' (-1975)

LANSING

3640' (-2169)



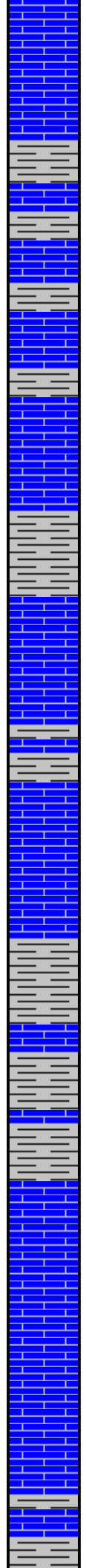


3700

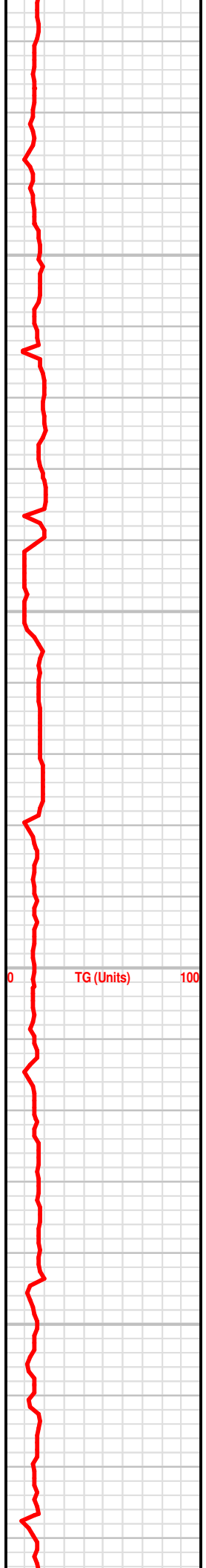
3750

3800

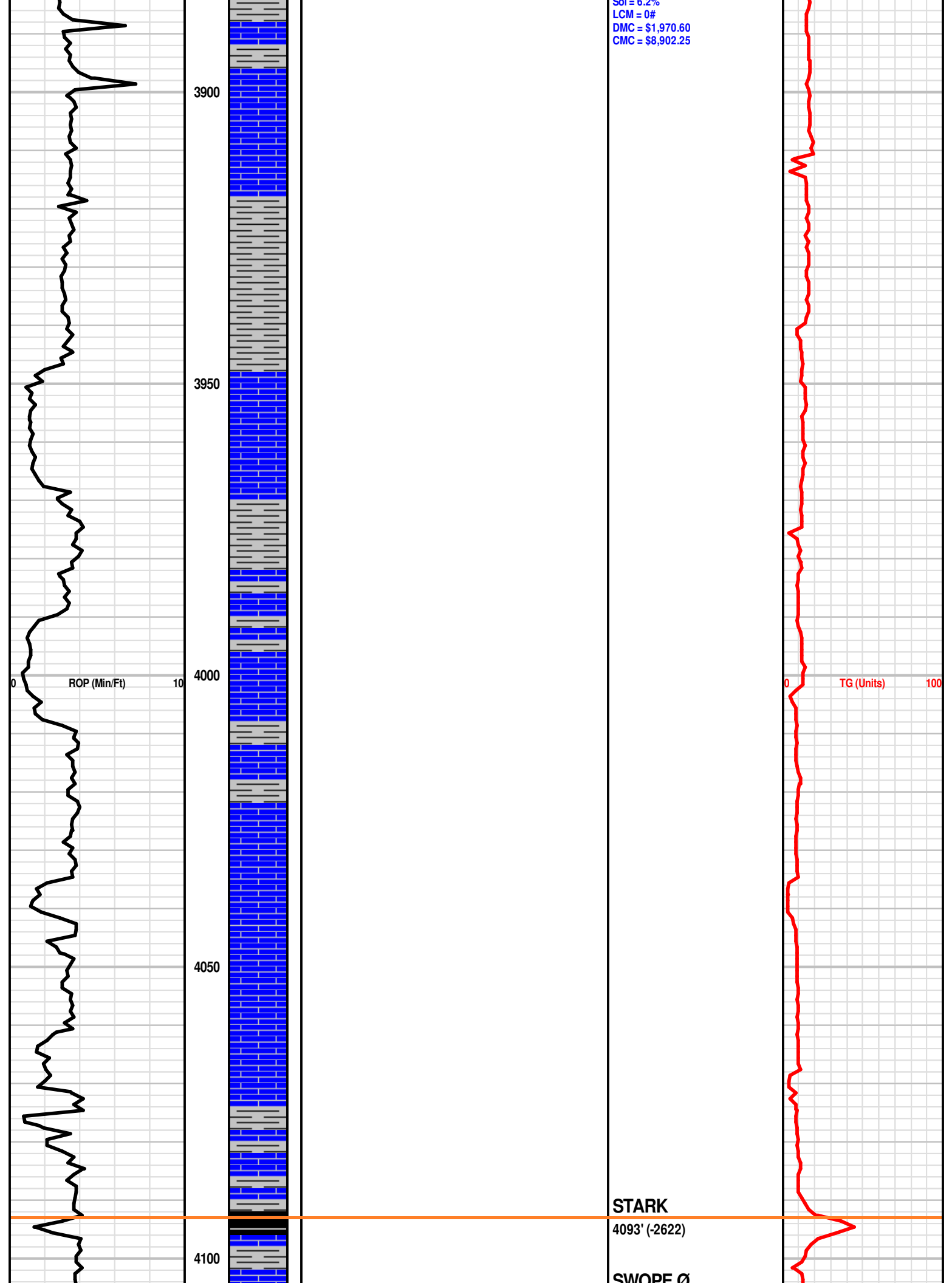
3850



Mudco Mud Ck @ 3866'  
1:00 PM 9/29/2013  
Vis = 48  
WT = 9.2  
PV = 15  
YP = 15  
Cake = 1  
ChI = 2500  
Cal = 80  
Sol = 0.0%



SOI = 6.2%  
LCM = 0#  
DMC = \$1,970.60  
CMC = \$8,902.25



3900

3950

4000

4050

4100

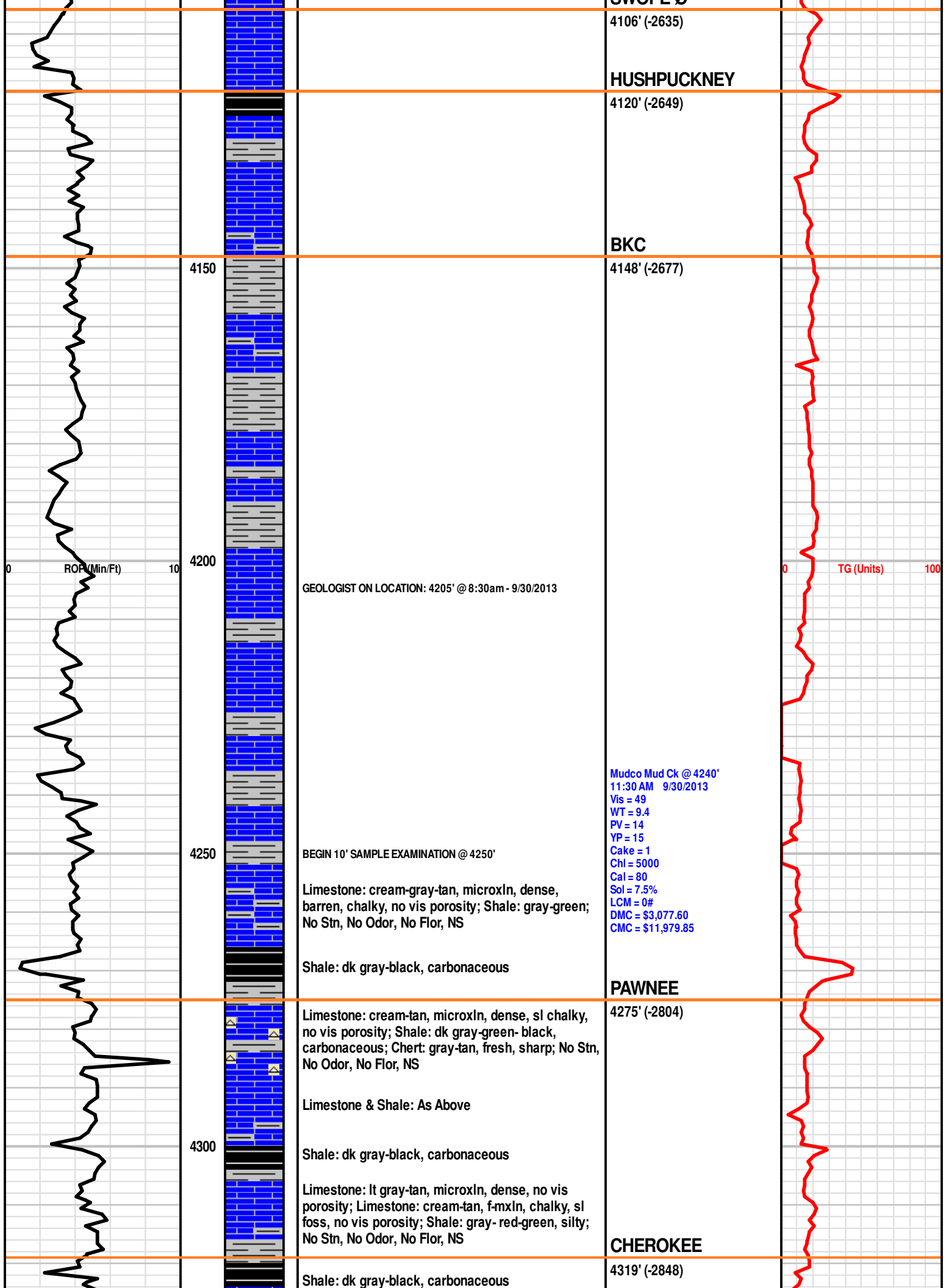
ROP (Min/Ft)

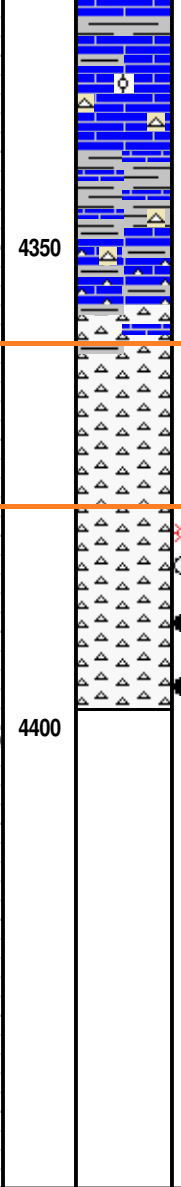
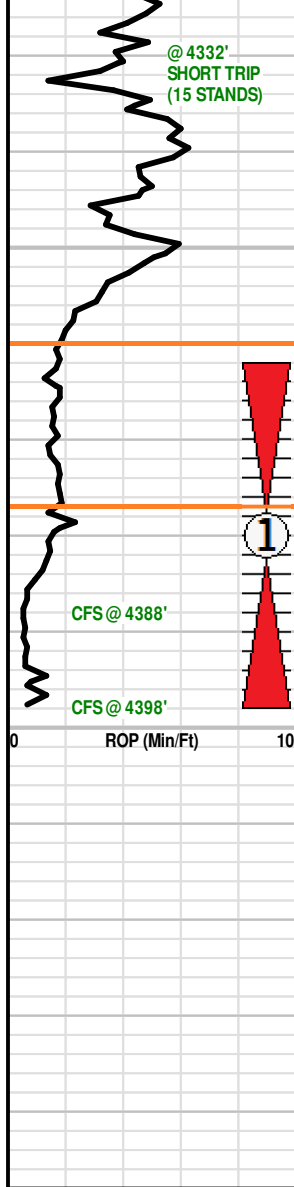
TG (Units)

STARK  
4093' (-2622)

SWOPE Ø







Limestone: cream-gray-brown, microxln, dense, trc oolitic, no vis porosity; Chert: lt brown-tan, sharp, fresh; Shale: gray-black, carbonaceous; No Stn, No Odor, No Flor, NS

Limestone: gray-cream-off white, fxln, dense, cherty, no vis porosity; Chert: white-opaque gray, sharp, fresh; Shale: gray-green; No Stn, No Odor, No Flor, NS

Chert: white-opaque gray-yellow-green-tan, sharp, fresh, some tripolitic, trc frac porosity; No Stn, No Odor, No Flor, NS; Limestone & Shale: As Above

Chert: white-lt gray-tan, sharp, fresh, some tripolitic, trc frac porosity; No Stn, SI Odor, Scatt dull yellow flor, NS

Chert: As Above, w/ Chert: white, weathered, poor pp-vuggy porosity, trc lt brn stn, sl odor, scatt dull yellow flor, NS

Chert: white-gray, tripolitic, pp & frac porosity, trc vuggy porosity, weathered lt brown stn, good odor, brt yellow flor, bleeding lt brn oil & gas

40" CFS (4388'): Chert: white-gray, mostly sharp, fresh, some weathered, pp & frac porosity, trc vuggy porosity, scatt lt brown stn, fair odor, brt yellow flor, gso&g

Chert: white, tripolitic, good pp-vuggy porosity, saturated lt brn stn, good odor, brt yellow flor, gso&g

60" CFS (4398'): Chert: white, tripolitic, good pp-vuggy porosity, saturated lt brn stn, good odor, dull-brt yellow flor, gso&g

**RTD 4398' (-2927)**  
**LTD 4396' (-2925)**

GEOLOGIST OFF LOCATION @ 7:00pm - 10/1/2013

Mudco Mud Ck @ 4398'  
12:00 AM 10/1/2013  
Vis = 44  
WT = 9.4+  
PV = 14  
YP = 15  
Cake = 1  
Chl = 6000  
Cal = 80  
Sol = 7.5%  
LCM = 1#  
DMC = \$341.05  
CMC = \$12,320.90

**MISSISSIPPIAN**

4360' (-2889)

**MISSISSIPPIAN Ø**

4377' (-2906)

**DST #1**

4362' - 4398'  
IF = BOB 1 min  
FF = BOB Immed. GTS 9 min  
REC: 178' GCM (5% G, 95% M)  
PRESSURES:  
IH = 2096#  
FH = 2090#  
IF = 36-38#  
FF = 34-78#  
ISIP = 345#  
FSIP = 313#  
Temp = 119° F  
GAS GAUGE FF:  
10" = 35.54 Mcf  
20" = 41.88 Mcf  
30" = 45.05 Mcf  
40" = 46.64 Mcf  
50" = 45.05 Mcf  
60" = 43.47 Mcf  
70" = 43.47 Mcf  
80" = 43.47 Mcf  
90" = 43.47 Mcf

