



**TRILOBITE TESTING, INC.**

# DRILL STEM TEST REPORT

Culbreath Oil & Gas Company Inc.

**20-10s-31w Thomas co.**

1532 S. Peoria Ave.  
Tulsa, OK 74120

**OstmeyerBixenman120A**

ATTN: Pat Deenihan

Job Ticket: 55654

**DST#: 7**

Test Start: 2013.11.28 @ 11:38:00

## GENERAL INFORMATION:

Formation: **Johnson Basal**

Deviated: No Whipstock: ft (KB)

Time Tool Opened: 13:37:15

Time Test Ended: 19:03:15

Test Type: Conventional Bottom Hole (Reset)

Tester: Sam Esparza

Unit No: 64

**Interval: 4556.00 ft (KB) To 4600.00 ft (KB) (TVD)**

Reference Elevations: 3022.00 ft (KB)

Total Depth: 4600.00 ft (KB) (TVD)

3014.00 ft (CF)

Hole Diameter: 7.88 inches Hole Condition: Good

KB to GR/CF: 8.00 ft

**Serial #: 8845 Outside**

Press @ Run Depth: 18.20 psig @ 4557.00 ft (KB)

Capacity: 8000.00 psig

Start Date: 2013.11.28

End Date: 2013.11.28

Last Calib.: 2013.11.28

Start Time: 11:38:05

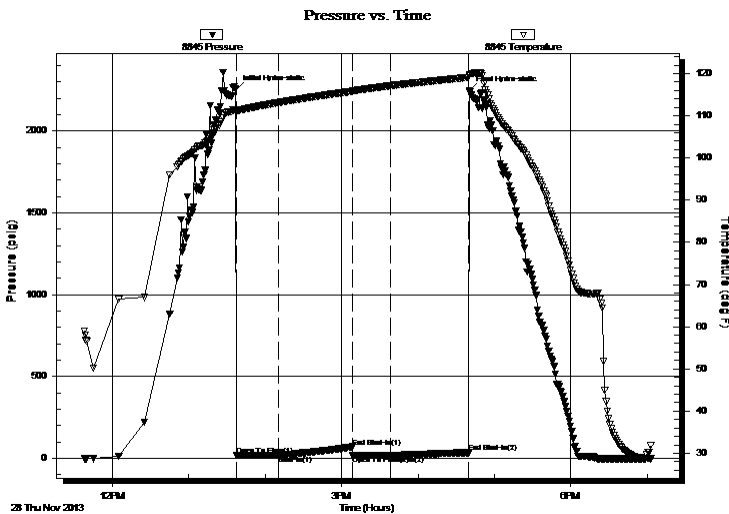
End Time: 19:03:14

Time On Btm: 2013.11.28 @ 13:37:00

Time Off Btm: 2013.11.28 @ 16:40:30

**TEST COMMENT:** IF: 1/4" Blow .  
IS: No Return.  
FF: No Blow .  
FS: No Return.

## PRESSURE SUMMARY



Time (Min.)	Pressure (psig)	Temp (deg F)	Annotation
0	2255.74	111.51	Initial Hydro-static
1	17.79	110.67	Open To Flow (1)
33	18.97	113.11	Shut-In(1)
92	69.98	115.80	End Shut-In(1)
92	19.41	115.79	Open To Flow (2)
122	18.20	117.12	Shut-In(2)
183	35.37	119.10	End Shut-In(2)
184	2246.85	119.60	Final Hydro-static

## Recovery

Length (ft)	Description	Volume (bbl)
5.00	Mud ( Oil Spots )	0.07

## Gas Rates

Choke (inches)	Pressure (psig)	Gas Rate (Mcf/d)

\* Recovery from multiple tests



**TRILOBITE  
TESTING, INC.**

# DRILL STEM TEST REPORT

**FLUID SUMMARY**

Culbreath Oil & Gas Company Inc.

**20-10s-31w Thomas co.**

1532 S. Peoria Ave.  
Tulsa, OK 74120

**OstmeyerBixenman120A**

Job Ticket: 55654

**DST#: 7**

ATTN: Pat Deenihan

Test Start: 2013.11.28 @ 11:38:00

## Mud and Cushion Information

Mud Type: Gel Chem

Cushion Type:

Oil API:

deg API

Mud Weight: 10.00 lb/gal

Cushion Length:

ft

Water Salinity:

ppm

Viscosity: 78.00 sec/qt

Cushion Volume:

bbbl

Water Loss: 7.99 in<sup>3</sup>

Gas Cushion Type:

Resistivity: 0.00 ohm.m

Gas Cushion Pressure:

psig

Salinity: 2000.00 ppm

Filter Cake: 1.00 inches

## Recovery Information

Recovery Table

Length ft	Description	Volume bbl
5.00	Mud ( Oil Spots )	0.070

Total Length: 5.00 ft      Total Volume: 0.070 bbl

Num Fluid Samples: 0

Num Gas Bombs: 0

Serial #:

Laboratory Name:

Laboratory Location:

Recovery Comments:

Serial #: 8845

Outside Culbreath Oil & Gas Company Inc.

Ostmeyer/Bixenman 120A

DST Test Number: 7

