



## DRILL STEM TEST REPORT

Prepared For: **Younger Energy Company**

9415 East Harry Street Suit  
403 Wichita Ks.67207

ATTN: Keith Reavis

**Jost 1-27**

**27-21s-15w-Pawnee**

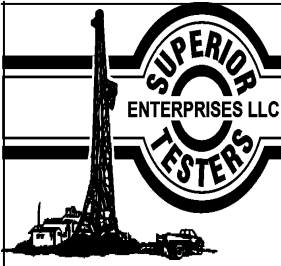
Start Date: 2013.11.24 @ 04:45:00

End Date: 2013.11.24 @ 19:05:00

Job Ticket #: 18466                      DST #: 3

Superior Testers Enterprises LLC  
PO Box 138 Great Bend KS 67530  
1-800-792-6902

Printed: 2013.11.25 @ 01:38:29



# DRILL STEM TEST REPORT

Younger Energy Company

**27-21s-15w-Pawnee**

9415 East Harry Street Suit  
403 Wichita Ks.67207

**Just 1-27**

Job Ticket: 18466

**DST#: 3**

ATTN: Keith Reavis

Test Start: 2013.11.24 @ 04:45:00

## GENERAL INFORMATION:

Formation: **Viola**

Deviated: No Whipstock: ft (KB)

Time Tool Opened: 12:19:00

Time Test Ended: 19:05:00

Test Type: Conventional Straddle (Initial)

Tester: Dustin Ellis

Unit No: 3315-Great Bend-40

**Interval: 3712.00 ft (KB) To 3850.00 ft (KB) (TVD)**

Reference Elevations: 1972.00 ft (KB)

Total Depth: 3986.00 ft (KB) (TVD)

1961.00 ft (CF)

Hole Diameter: 7.88 inches Hole Condition: Fair

KB to GR/CF: 11.00 ft

**Serial #: 6731 Outside**

Press@RunDepth: 151.71 psia @ 3714.16 ft (KB)

Capacity: 5000.00 psia

Start Date: 2013.11.24

End Date: 2013.11.24

Last Calib.: 2013.11.25

Start Time: 04:45:00

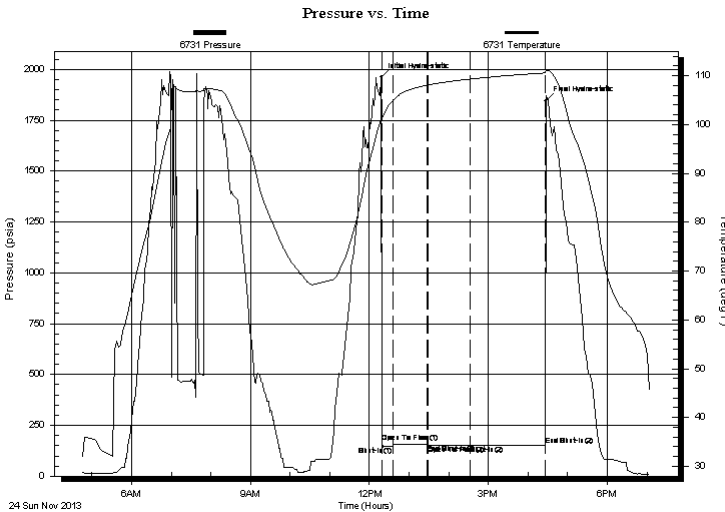
End Time: 19:05:00

Time On Btm: 2013.11.24 @ 12:17:30

Time Off Btm: 2013.11.24 @ 16:27:00

**TEST COMMENT:** 1st Open 10 minutes Strong blow blew off bottom bucket in 1.5 minutes.  
1st Shut in 60 minutes Yes blow back surface.  
2nd Open 60 minutes Weak 1/2 inch blow through out.  
2nd Shut in 120 minutes Yes blow back surface

## PRESSURE SUMMARY



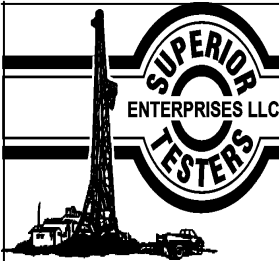
Time (Min.)	Pressure (psia)	Temp (deg F)	Annotation
0	1960.49	101.15	Initial Hydro-static
2	167.54	101.17	Open To Flow (1)
19	148.27	105.11	Shut-In(1)
70	158.57	108.06	End Shut-In(1)
71	150.27	108.08	Open To Flow (2)
136	151.71	109.31	Shut-In(2)
249	152.65	110.56	End Shut-In(2)
250	1844.68	111.00	Final Hydro-static

## Recovery

Length (ft)	Description	Volume (bbl)
110.00	Gassy mud 100%	1.54

## Gas Rates

Choke (inches)	Pressure (psia)	Gas Rate (Mcf/d)



# DRILL STEM TEST REPORT

Younger Energy Company

**27-21s-15w-Pawnee**

9415 East Harry Street Suit  
403 Wichita Ks.67207

**Just 1-27**

Job Ticket: 18466

**DST#: 3**

ATTN: Keith Reavis

Test Start: 2013.11.24 @ 04:45:00

## GENERAL INFORMATION:

Formation: **Viola**

Deviated: No Whipstock: ft (KB)

Test Type: Conventional Straddle (Initial)

Time Tool Opened: 12:19:00

Tester: Dustin Ellis

Time Test Ended: 19:05:00

Unit No: 3315-Great Bend-40

**Interval: 3712.00 ft (KB) To 3850.00 ft (KB) (TVD)**

Reference Elevations: 1972.00 ft (KB)

Total Depth: 3986.00 ft (KB) (TVD)

1961.00 ft (CF)

Hole Diameter: 7.88 inches Hole Condition: Fair

KB to GR/CF: 11.00 ft

**Serial #: 6806 Below**

Press@RunDepth: psia @ 3853.89 ft (KB)

Capacity: 5000.00 psia

Start Date: 2013.11.24 End Date: 2013.11.24

Last Calib.: 2013.11.25

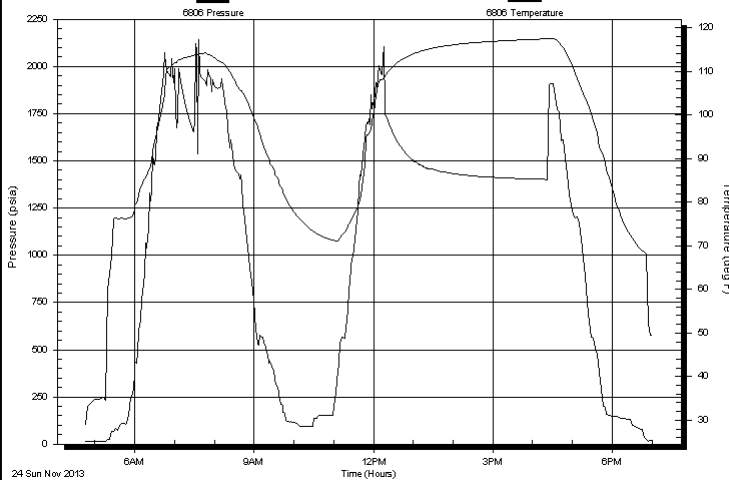
Start Time: 04:45:00 End Time: 19:03:00

Time On Btm:

Time Off Btm:

TEST COMMENT: 1st Open 10 minutes Strong blow blew off bottom bucket in 1.5 minutes.  
1st Shut in 60 minutes Yes blow back surface.  
2nd Open 60 minutes Weak 1/2 inch blow through out.  
2nd Shut in 120 minutes Yes blow back surface

Pressure vs. Time



## PRESSURE SUMMARY

Time (Min.)	Pressure (psia)	Temp (deg F)	Annotation

## Recovery

Length (ft)	Description	Volume (bbl)
110.00	Gassy mud 100%	1.54

## Gas Rates

	Choke (inches)	Pressure (psia)	Gas Rate (Mcf/d)



# DRILL STEM TEST REPORT

Younger Energy Company

**27-21s-15w-Pawnee**

9415 East Harry Street Suit  
403 Wichita Ks.67207

**Just 1-27**

Job Ticket: 18466

**DST#: 3**

ATTN: Keith Reavis

Test Start: 2013.11.24 @ 04:45:00

## GENERAL INFORMATION:

Formation: **Viola**

Deviated: No Whipstock: ft (KB)

Time Tool Opened: 12:19:00

Time Test Ended: 19:05:00

Test Type: Conventional Straddle (Initial)

Tester: Dustin Ellis

Unit No: 3315-Great Bend-40

**Interval: 3712.00 ft (KB) To 3850.00 ft (KB) (TVD)**

Reference Elevations: 1972.00 ft (KB)

Total Depth: 3986.00 ft (KB) (TVD)

1961.00 ft (CF)

Hole Diameter: 7.88 inches Hole Condition: Fair

KB to GR/CF: 11.00 ft

**Serial #: 8159 Outside**

Press@RunDepth: 152.60 psia @ 3714.16 ft (KB)

Capacity: 5000.00 psia

Start Date: 2013.11.24

End Date: 2013.11.24

Last Calib.: 2013.11.25

Start Time: 04:45:00

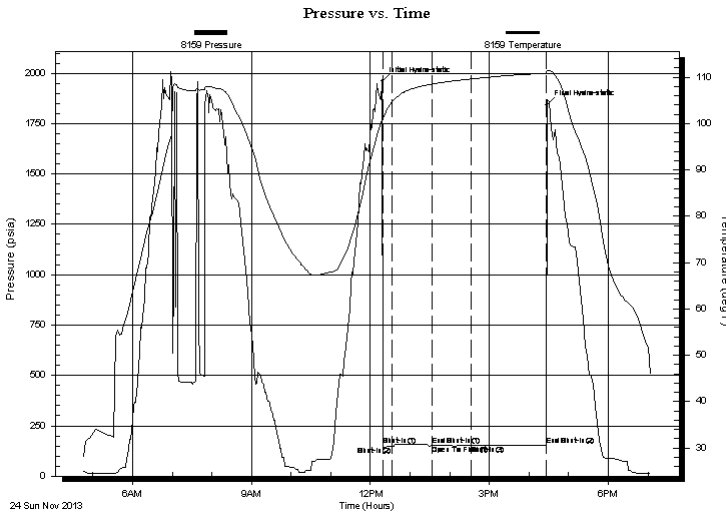
End Time: 19:05:00

Time On Btm: 2013.11.24 @ 12:17:30

Time Off Btm: 2013.11.24 @ 16:27:00

**TEST COMMENT:** 1st Open 10 minutes Strong blow blew off bottom bucket in 1.5 minutes.  
1st Shut in 60 minutes Yes blow back surface.  
2nd Open 60 minutes Weak 1/2 inch blow through out.  
2nd Shut in 120 minutes Yes blow back surface

## PRESSURE SUMMARY



Time (Min.)	Pressure (psia)	Temp (deg F)	Annotation
0	1960.06	101.08	Initial Hydro-static
2	153.05	101.23	Shut-In(1)
16	147.47	104.80	Shut-In(2)
76	150.98	108.52	End Shut-In(1)
77	151.03	108.53	Open To Flow (1)
135	151.60	109.64	Shut-In(3)
249	152.60	110.90	End Shut-In(2)
250	1841.51	111.36	Final Hydro-static

## Recovery

Length (ft)	Description	Volume (bbl)
110.00	Gassy mud 100%	1.54

## Gas Rates

	Choke (inches)	Pressure (psia)	Gas Rate (Mcf/d)



# DRILL STEM TEST REPORT

**TOOL DIAGRAM**

Younger Energy Company

**27-21s-15w-Pawnee**

9415 East Harry Street Suit  
403 Wichita Ks.67207

**Jost 1-27**

Job Ticket: 18466

**DST#: 3**

ATTN: Keith Reavis

Test Start: 2013.11.24 @ 04:45:00

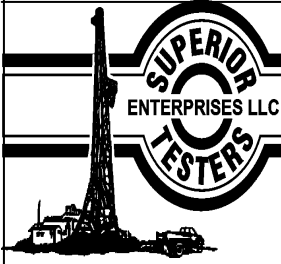
## Tool Information

Drill Pipe:	Length: 3712.00 ft	Diameter: 3.80 inches	Volume: 52.07 bbl	Tool Weight: 2000.00 lb
Heavy Wt. Pipe:	Length: 0.00 ft	Diameter: 0.00 inches	Volume: 0.00 bbl	Weight set on Packer: 20000.00 lb
Drill Collar:	Length: 0.00 ft	Diameter: 0.00 inches	Volume: 0.00 bbl	Weight to Pull Loose: 71000.00 lb
			<u>Total Volume: 52.07 bbl</u>	Tool Chased 0.00 ft
Drill Pipe Above KB:	22.61 ft			String Weight: Initial 61000.00 lb
Depth to Top Packer:	3712.00 ft			Final 61000.00 lb
Depth to Bottom Packer:	3850.37 ft			
Interval between Packers:	138.37 ft			
Tool Length:	165.28 ft			
Number of Packers:	3	Diameter: 6.75 inches		

Tool Comments:

Tool Description	Length (ft)	Serial No.	Position	Depth (ft)	Accum. Lengths
------------------	-------------	------------	----------	------------	----------------

P.O. Sub	0.31			3689.70	
C.O. Sub	0.31			3690.01	
P.O. Sub	0.31			3690.32	
Recorder	1.80		Fluid	3692.12	
Conv. S.I. Tool	1.52			3693.64	
Sampler	1.10			3694.74	
HMV	2.10			3696.84	
Recorder	1.80		Inside	3698.64	
Telemetry Tool	7.01			3705.65	
Jars	2.05			3707.70	
Bypass Hanger	0.32			3708.02	
Safety Joint	0.78			3708.80	
Packer	1.78			3710.58	22.61 Bottom Of Top Packer
Packer	1.42			3712.00	
Stubb	0.36			3712.36	
Recorder Carrier	1.80			3714.16	
Recorder	0.00	6731	Outside	3714.16	
Recorder	0.00	8159	Outside	3714.16	
Perforations	135.00			3849.16	
Bypass Receiver	0.85			3850.01	
Blank Spacing	0.00			3850.01	
Stubb	0.36			3850.37	138.37 Tool Interval
Packer	1.42			3851.79	
Bypass Hanger	0.30			3852.09	
Recorder	1.80	6806	Below	3853.89	
Collar	0.00			3853.89	



# DRILL STEM TEST REPORT

## FLUID SUMMARY

Younger Energy Company

**27-21s-15w-Pawnee**

9415 East Harry Street Suit  
403 Wichita Ks.67207

**Jost 1-27**

Job Ticket: 18466

**DST#: 3**

ATTN: Keith Reavis

Test Start: 2013.11.24 @ 04:45:00

### Mud and Cushion Information

Mud Type: Gel Chem

Cushion Type:

Oil API:

deg API

Mud Weight: 9.00 lb/gal

Cushion Length: ft

Water Salinity: ppm

Viscosity: 62.00 sec/qt

Cushion Volume: bbl

Water Loss: 6.40 in<sup>3</sup>

Gas Cushion Type:

Resistivity: ohm.m

Gas Cushion Pressure: psia

Salinity: 5600.00 ppm

Filter Cake: 1.00 inches

### Recovery Information

Recovery Table

Length ft	Description	Volume bbl
110.00	Gassy mud 100%	1.543

Total Length: 110.00 ft      Total Volume: 1.543 bbl

Num Fluid Samples: 0

Num Gas Bombs: 0

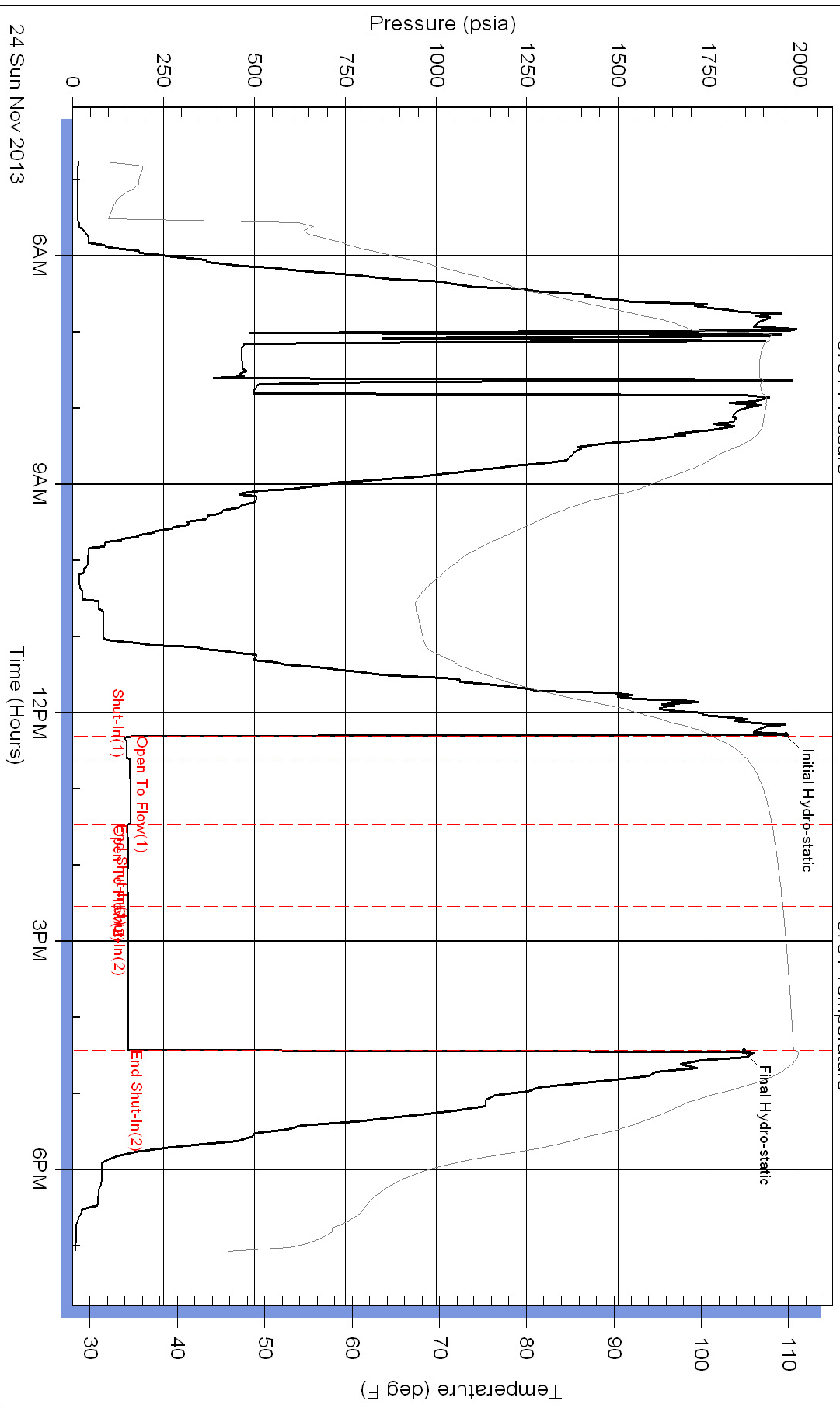
Serial #:

Laboratory Name:

Laboratory Location:

Recovery Comments:

### Pressure vs. Time



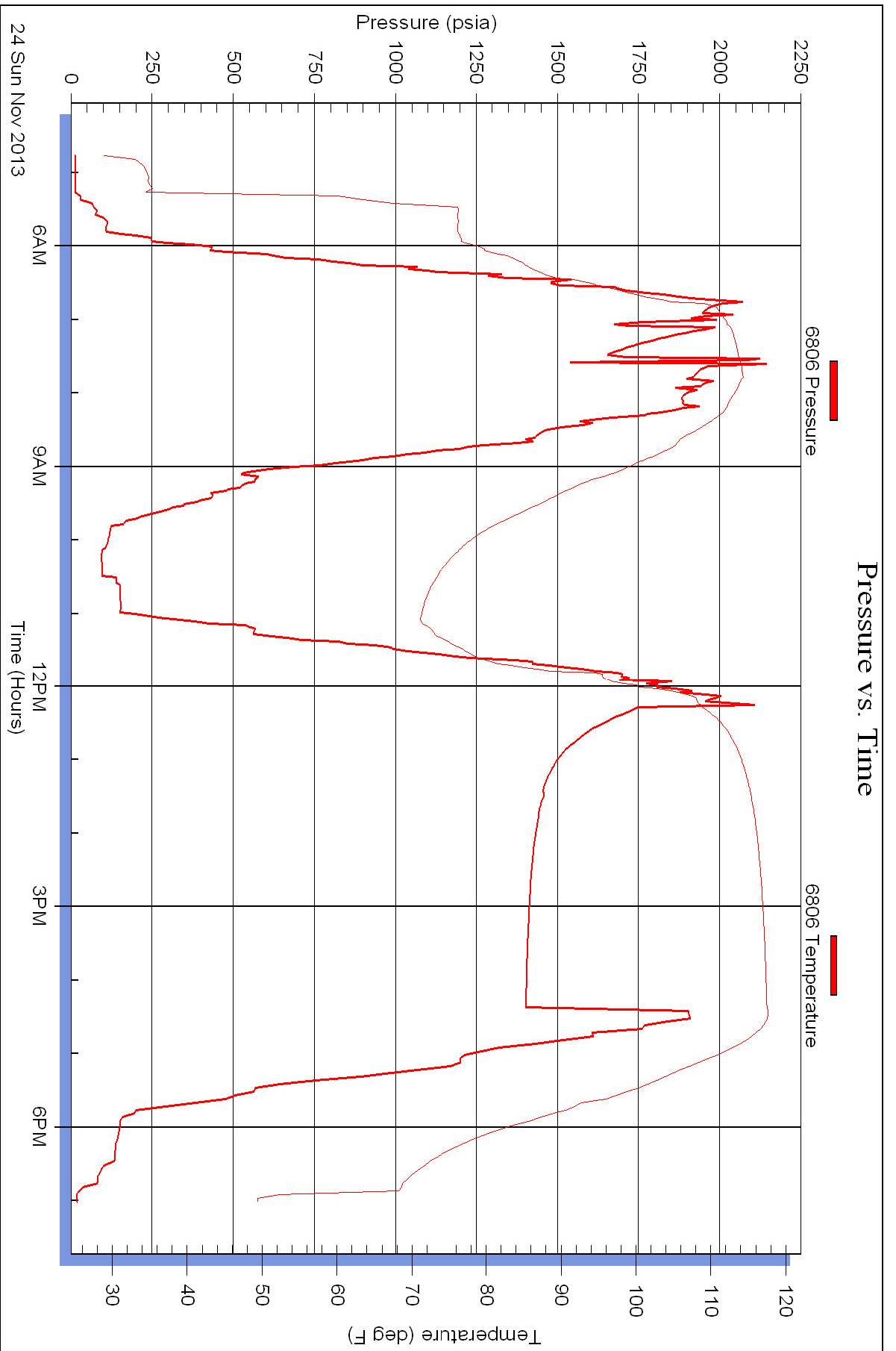
Serial #: 6806

Below

Younger Energy Company

Jost 1-27

DST Test Number: 3





### Pressure vs. Time

