



## DRILL STEM TEST REPORT

Prepared For: **American Warrior Inc**

PO Box 399  
Garden City KS 67846

ATTN: Jason Alm

### **Schniepp #4-31 NE**

### **31-18s-21w Ness,KS**

Start Date: 2013.09.03 @ 00:01:46

End Date: 2013.09.03 @ 08:36:16

Job Ticket #: 041760                      DST #: 1

Trilobite Testing, Inc

PO Box 362 Hays, KS 67601

ph: 785-625-4778 fax: 785-625-5620

Printed: 2013.09.05 @ 14:12:43



**TRILOBITE TESTING, INC.**

# DRILL STEM TEST REPORT

American Warrior Inc  
 PO Box 399  
 Garden City KS 67846  
 ATTN: Jason Alm

**31-18s-21w Ness, KS**  
**Schniepp #4-31 NE**  
 Job Ticket: 041760 **DST#: 1**  
 Test Start: 2013.09.03 @ 00:01:46

## GENERAL INFORMATION:

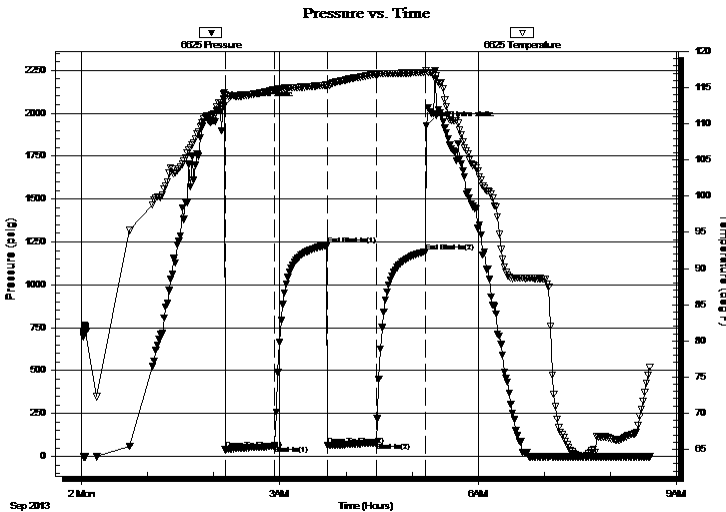
Formation: **Miss/Ch**  
 Deviated: No Whipstock: ft (KB)  
 Time Tool Opened: 02:10:16  
 Time Test Ended: 08:36:16  
 Interval: **4177.00 ft (KB) To 4242.00 ft (KB) (TVD)**  
 Total Depth: 2442.00 ft (KB) (TVD)  
 Hole Diameter: 7.88 inches Hole Condition: Good  
 Test Type: Conventional Bottom Hole (Initial)  
 Tester: Jeff Brown  
 Unit No: 67  
 Reference Elevations: 21.00 ft (KB)  
 ft (CF)  
 KB to GR/CF: ft

## Serial #: 6625 Outside

Press @ Run Depth: 84.69 psig @ 4216.00 ft (KB) Capacity: 8000.00 psig  
 Start Date: 2013.09.02 End Date: 2013.09.02 Last Calib.: 2013.09.03  
 Start Time: 00:01:47 End Time: 08:36:16 Time On Btm: 2013.09.02 @ 02:09:46  
 Time Off Btm: 2013.09.02 @ 05:12:46

TEST COMMENT: IFP-Weak blow built to 3 in  
 ISI-Dead no blow back  
 FFP-Weak blow built to 1 in  
 FSI-Dead no blow back

## PRESSURE SUMMARY



Time (Min.)	Pressure (psig)	Temp (deg F)	Annotation
0	2043.11	114.30	Initial Hydro-static
1	39.12	113.98	Open To Flow (1)
46	66.85	114.68	Shut-In(1)
93	1230.41	115.37	End Shut-In(1)
94	62.88	115.21	Open To Flow (2)
138	84.69	116.85	Shut-In(2)
183	1193.38	117.12	End Shut-In(2)
183	1926.86	117.38	Final Hydro-static

## Recovery

Length (ft)	Description	Volume (bbl)
90.00	mw with oil sots 25 %M 75 %W	0.44

## Gas Rates

	Choke (inches)	Pressure (psig)	Gas Rate (Mcf/d)



**TRILOBITE TESTING, INC.**

# DRILL STEM TEST REPORT

American Warrior Inc  
 PO Box 399  
 Garden City KS 67846  
 ATTN: Jason Alm

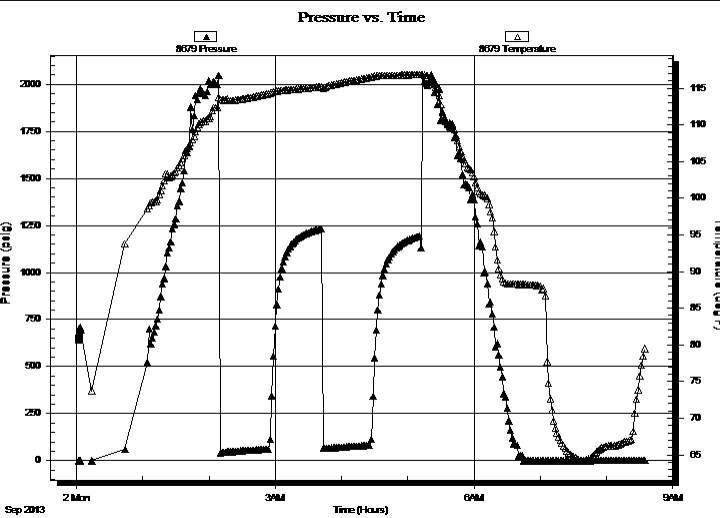
**31-18s-21w Ness, KS**  
**Schniepp #4-31 NE**  
 Job Ticket: 041760 **DST#: 1**  
 Test Start: 2013.09.03 @ 00:01:46

## GENERAL INFORMATION:

Formation: **Miss/Ch**  
 Deviated: No Whipstock: ft (KB)  
 Time Tool Opened: 02:10:16  
 Time Test Ended: 08:36:16  
 Interval: **4177.00 ft (KB) To 4242.00 ft (KB) (TVD)**  
 Total Depth: 2442.00 ft (KB) (TVD)  
 Hole Diameter: 7.88 inches Hole Condition: Good  
 Test Type: Conventional Bottom Hole (Initial)  
 Tester: Jeff Brown  
 Unit No: 67  
 Reference Elevations: 21.00 ft (KB)  
 ft (CF)  
 KB to GR/CF: ft

**Serial #: 8679 Inside**  
 Press @ Run Depth: psig @ 4216.00 ft (KB) Capacity: 8000.00 psig  
 Start Date: 2013.09.02 End Date: 2013.09.02 Last Calib.: 2013.09.03  
 Start Time: 00:01:56 End Time: 08:34:55 Time On Btm:  
 Time Off Btm:

**TEST COMMENT:** IFP-Weak blow built to 3 in  
 ISI-Dead no blow back  
 FFP-Weak blow built to 1 in  
 FSI-Dead no blow back



## PRESSURE SUMMARY

Time (Min.)	Pressure (psig)	Temp (deg F)	Annotation

## Recovery

Length (ft)	Description	Volume (bbl)
90.00	mw with oil sots 25 %M 75 %W	0.44

## Gas Rates

Choke (inches)	Pressure (psig)	Gas Rate (Mcf/d)



**TRILOBITE  
TESTING, INC.**

# DRILL STEM TEST REPORT

**TOOL DIAGRAM**

American Warrior Inc  
PO Box 399  
Garden City KS 67846  
ATTN: Jason Alm

**31-18s-21w Ness, KS**  
**Schniepp #4-31 NE**  
Job Ticket: 041760 **DST#: 1**  
Test Start: 2013.09.03 @ 00:01:46

## Tool Information

Drill Pipe:	Length: 4035.00 ft	Diameter: 3.80 inches	Volume: 56.60 bbl	Tool Weight: 2200.00 lb
Heavy Wt. Pipe:	Length: 0.00 ft	Diameter: 2.70 inches	Volume: 0.00 bbl	Weight set on Packer: 22000.00 lb
Drill Collar:	Length: 118.00 ft	Diameter: 2.25 inches	Volume: 0.58 bbl	Weight to Pull Loose: 80000.00 lb
		Total Volume: 57.18 bbl		Tool Chased 0.00 ft
Drill Pipe Above KB:	4.00 ft			String Weight: Initial 65000.00 lb
Depth to Top Packer:	4177.00 ft			Final 66000.00 lb
Depth to Bottom Packer:	ft			
Interval between Packers:	65.00 ft			
Tool Length:	93.00 ft			
Number of Packers:	2	Diameter: 6.75 inches		

Tool Comments:

## Tool Description

Tool Description	Length (ft)	Serial No.	Position	Depth (ft)	Accum. Lengths
Change Over Sub	1.00			4150.00	
Shut In Tool	5.00			4155.00	
Hydraulic tool	5.00			4160.00	
Jars	5.00			4165.00	
Safety Joint	3.00			4168.00	
Packer	4.00			4172.00	28.00 Bottom Of Top Packer
Packer	5.00			4177.00	
Stubb	1.00			4178.00	
Perforations	5.00			4183.00	
Change Over Sub	1.00			4184.00	
Drill Pipe	31.00			4215.00	
Change Over Sub	1.00			4216.00	
Recorder	0.00	6625	Outside	4216.00	
Recorder	0.00	8679	Inside	4216.00	
Perforations	23.00			4239.00	
Bullnose	3.00			4242.00	65.00 Bottom Packers & Anchor
<b>Total Tool Length:</b>	<b>93.00</b>				



**TRILOBITE  
TESTING, INC.**

# DRILL STEM TEST REPORT

**FLUID SUMMARY**

American Warrior Inc  
PO Box 399  
Garden City KS 67846  
ATTN: Jason Alm

**31-18s-21w Ness,KS**  
**Schniepp #4-31 NE**  
Job Ticket: 041760      **DST#: 1**  
Test Start: 2013.09.03 @ 00:01:46

## Mud and Cushion Information

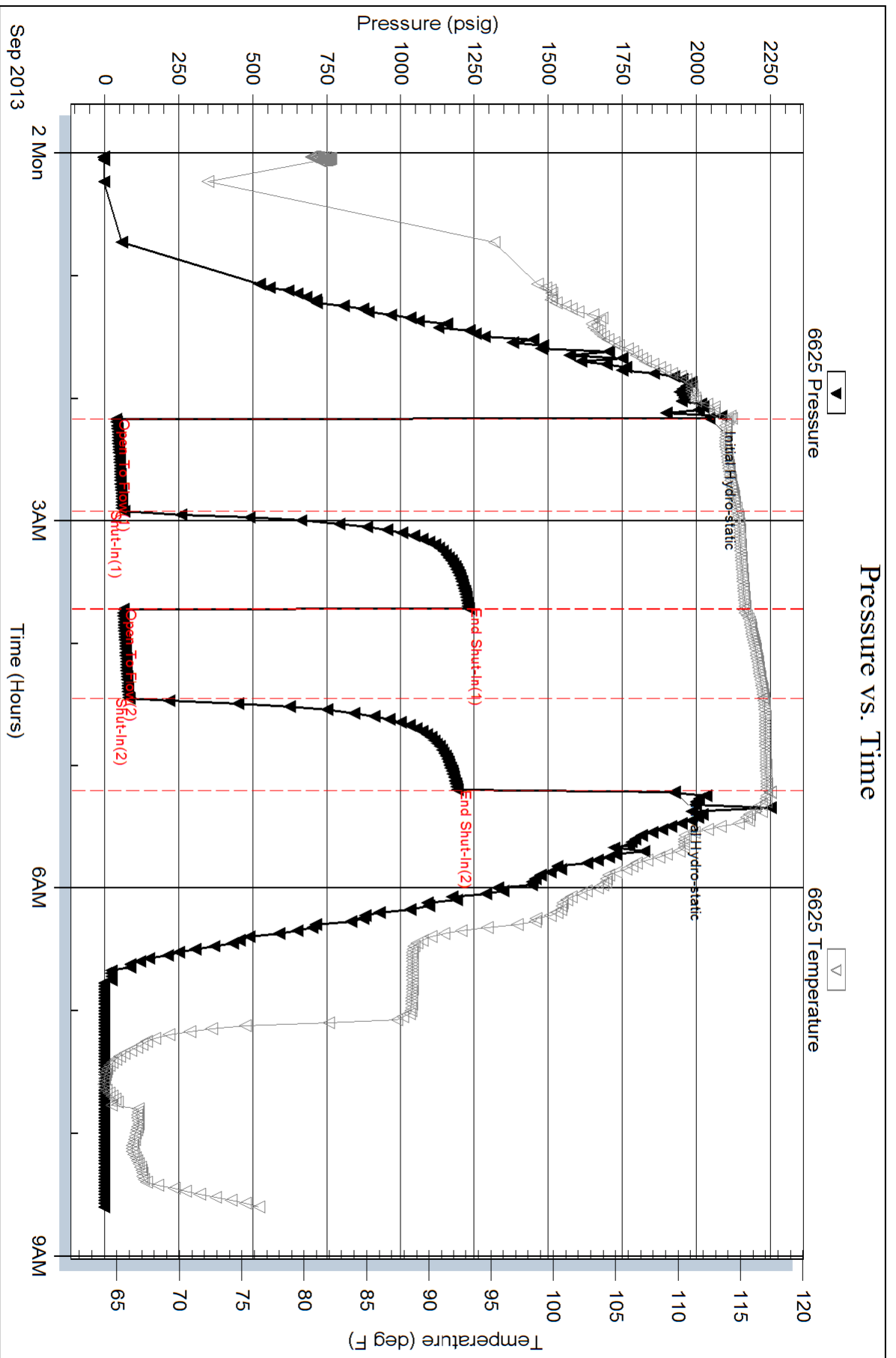
Mud Type: Gel Chem	Cushion Type:	Oil API:	deg API
Mud Weight: 9.00 lb/gal	Cushion Length: ft	Water Salinity:	25000 ppm
Viscosity: 53.00 sec/qt	Cushion Volume: bbl		
Water Loss: 9.18 in <sup>3</sup>	Gas Cushion Type:		
Resistivity: ohm.m	Gas Cushion Pressure: psig		
Salinity: 8000.00 ppm			
Filter Cake: inches			

## Recovery Information

Recovery Table

Length ft	Description	Volume bbl
90.00	mw w ith oil sots 25 %M 75 %W	0.443

Total Length: 90.00 ft      Total Volume: 0.443 bbl  
Num Fluid Samples: 0      Num Gas Bombs: 0      Serial #:  
Laboratory Name:      Laboratory Location:  
Recovery Comments:



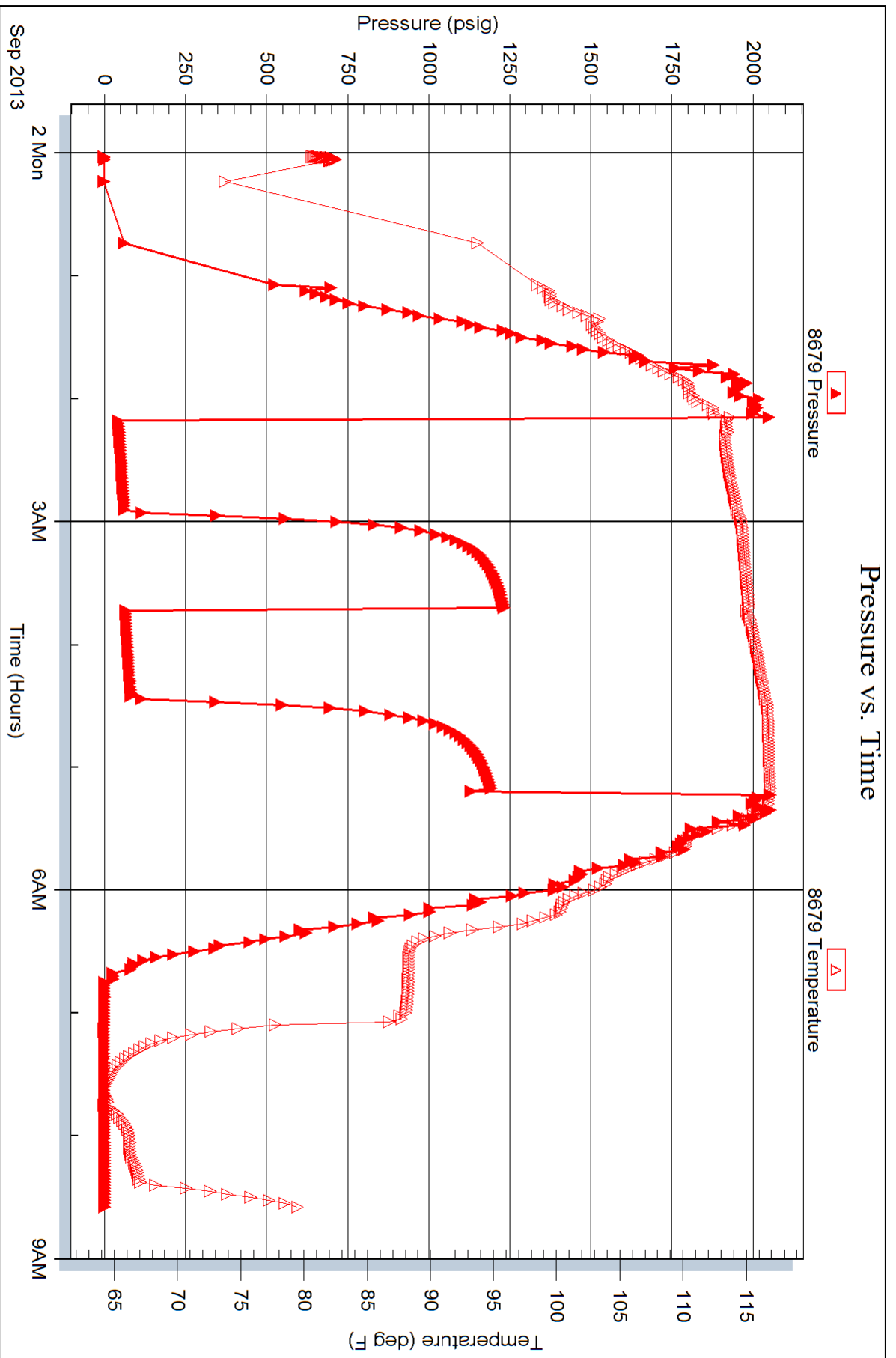
Serial #: 8679

Inside

American Warrior Inc

Schniepp #4-31 NE

DST Test Number: 1





# TRILOBITE TESTING INC.

P.O. Box 1733 • Hays, Kansas 67601

## Test Ticket

NO. 041760

Well Name & No. Schniepp #4-31 NE Test No. 1 Date 9-2-13  
 Company American Warrior INC Elevation 2127 KB 2121 GL  
 Address PO Box 399 Garden City KS 67784  
 Co. Rep / Geo. Jason ALM Rig Petromark #1  
 Location: Sec. 31 Twp. 18 S Rge. 21 W Co. Ness State KS

Interval Tested 4177 - 4242 Zone Tested Miss / cher Sand  
 Anchor Length 65 Drill Pipe Run 4035 Mud Wt. 9.3  
 Top Packer Depth 4172 Drill Collars Run 118 Vis 53  
 Bottom Packer Depth 4177 Wt. Pipe Run 0 WL 9.2  
 Total Depth 4242 Chlorides 8000 ppm System LCM 0

Blow Description off - weak Blow Built TO 3 IN  
3rd - Dead No Blow Back  
off - weak Blow Built TO 1 IN  
1st - Dead No Blow back

Rec	Feet of	%gas	%oil	%water	%mud
<u>90</u>	<u>MW with oil spots</u>			<u>75%</u>	<u>25%</u>
Rec	Feet of	%gas	%oil	%water	%mud
Rec	Feet of	%gas	%oil	%water	%mud
Rec	Feet of	%gas	%oil	%water	%mud
Rec	Feet of	%gas	%oil	%water	%mud

Rec Total 90 BHT 117 Gravity API RW, 302 @ 63.8° F Chlorides 25.000 ppm

(A) Initial Hydrostatic 2043  Test 1250 T-On Location 11:22  
 (B) First Initial Flow 39  Jars 250 T-Started 00:01  
 (C) First Final Flow 67  Safety Joint 75 T-Open 2:10  
 (D) Initial Shut-In 1230  Circ Sub T-Pulled 5:10  
 (E) Second Initial Flow 63  Hourly Standby T-Out 8:36  
 (F) Second Final Flow 85  Mileage 102 RT 158.10 Comments \_\_\_\_\_  
 (G) Final Shut-In 1193  Sampler \_\_\_\_\_  
 (H) Final Hydrostatic 1927  Straddle \_\_\_\_\_

Initial Open 45  Shale Packer \_\_\_\_\_  Ruined Shale Packer \_\_\_\_\_  
 Initial Shut-In 45  Shale Packer \_\_\_\_\_  Ruined Packer \_\_\_\_\_  
 Final Flow 45  Extra Packer \_\_\_\_\_  Extra Copies \_\_\_\_\_  
 Final Shut-In 45  Extra Recorder \_\_\_\_\_ Sub Total 0  
 Day Standby \_\_\_\_\_ Total 1733.10  
 Accessibility \_\_\_\_\_ MP/DST Disc't \_\_\_\_\_  
 Sub Total 1733.10

Approved By \_\_\_\_\_ Our Representative Jeff Brown

TriLOBITE TESTING INC. shall not be liable for damaged of any kind of the property or personnel of the one for whom a test is made, or for any loss suffered or sustained, directly or indirectly, through the use of its equipment, or its statements or opinion concerning the results of any test, tools lost or damaged in the hole shall be paid for at cost by the party for whom the test is made.