



**TRILOBITE TESTING, INC.**

# DRILL STEM TEST REPORT

Samuel Gary Jr. Associates, Inc.

**7-15S-15W Russell Co**

1515 Wynkoop ste. 700  
Denver, Co 80202

**Witt #1-7**

Job Ticket: 54830

**DST#: 1**

ATTN: Dan Prichard

Test Start: 2013.09.28 @ 01:47:19

## GENERAL INFORMATION:

Formation: **Lansing F & G**

Deviated: No Whipstock: ft (KB)

Time Tool Opened: 04:14:19

Time Test Ended: 09:52:28

Test Type: Conventional Bottom Hole (Initial)

Tester: Tate Lang/ Tim Phill

Unit No: 49

**Interval: 3216.00 ft (KB) To 3264.00 ft (KB) (TVD)**

Reference Elevations: 1905.00 ft (KB)

Total Depth: 3264.00 ft (KB) (TVD)

1895.00 ft (CF)

Hole Diameter: 7.88 inches Hole Condition: Good

KB to GR/CF: 10.00 ft

**Serial #: 8898 Outside**

Press @ RunDepth: 42.88 psig @ 3229.00 ft (KB)

Capacity: 8000.00 psig

Start Date: 2013.09.28

End Date:

2013.09.28

Last Calib.:

2013.09.28

Start Time: 01:47:20

End Time:

09:52:29

Time On Btm:

2013.09.28 @ 04:14:09

Time Off Btm:

2013.09.28 @ 07:58:28

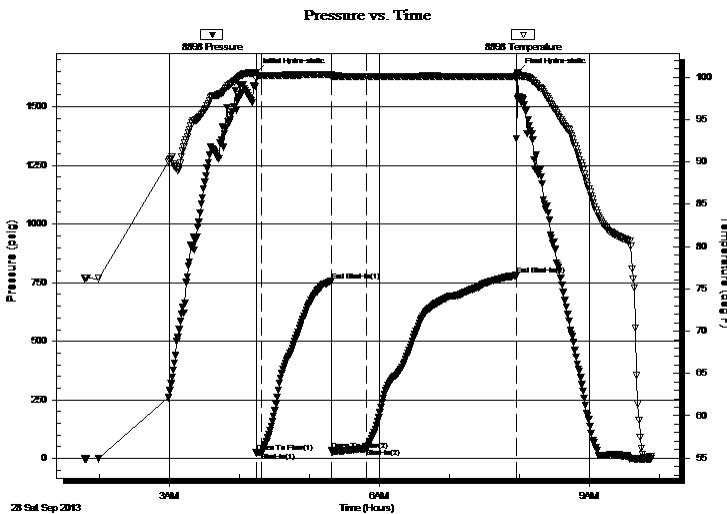
**TEST COMMENT:** IFP-Fair surface built to 6 1/2 in.

ISI- Dead no blow back

FF-BOB in 1 1/2 min.

FSI-Dead no blow back

## PRESSURE SUMMARY



Time (Min.)	Pressure (psig)	Temp (deg F)	Annotation
0	1644.83	100.58	Initial Hydro-static
1	24.69	99.88	Open To Flow (1)
5	26.66	100.21	Shut-In(1)
65	755.94	100.31	End Shut-In(1)
65	33.97	100.05	Open To Flow (2)
95	42.88	100.06	Shut-In(2)
223	780.89	100.05	End Shut-In(2)
225	1646.53	100.25	Final Hydro-static

## Recovery

Length (ft)	Description	Volume (bbl)
65.00	25%G,25%M,50%O	0.91
0.00	300 GIP	0.00

## Gas Rates

	Choke (inches)	Pressure (psig)	Gas Rate (Mcf/d)







**TRILOBITE  
TESTING, INC.**

# DRILL STEM TEST REPORT

**FLUID SUMMARY**

Samuel Gary Jr. Associates, Inc.

**7-15S-15W Russell Co**

1515 Wynkoop ste. 700  
Denver, Co 80202

**Witt #1-7**

Job Ticket: 54830

**DST#: 1**

ATTN: Dan Prichard

Test Start: 2013.09.28 @ 01:47:19

## Mud and Cushion Information

Mud Type: Gel Chem

Cushion Type:

Oil API:

deg API

Mud Weight: 9.00 lb/gal

Cushion Length:

ft

Water Salinity:

ppm

Viscosity: 57.00 sec/qt

Cushion Volume:

bbbl

Water Loss: 7.98 in<sup>3</sup>

Gas Cushion Type:

Resistivity: ohm.m

Gas Cushion Pressure:

psig

Salinity: 6000.00 ppm

Filter Cake: 1.00 inches

## Recovery Information

Recovery Table

Length ft	Description	Volume bbbl
65.00	25%G,25%M,50%O	0.912
0.00	300 GIP	0.000

Total Length: 65.00 ft      Total Volume: 0.912 bbl

Num Fluid Samples: 0

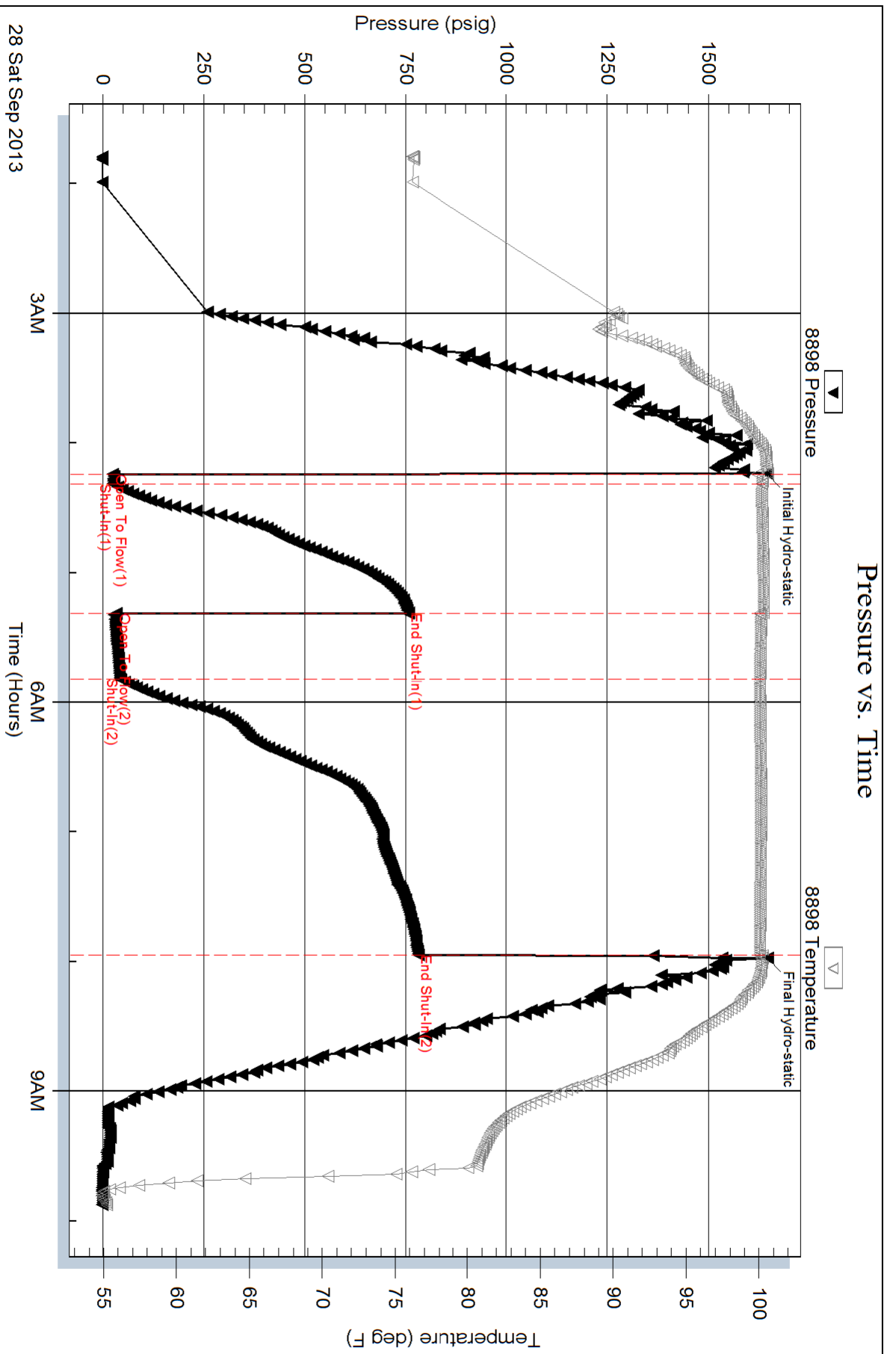
Num Gas Bombs: 0

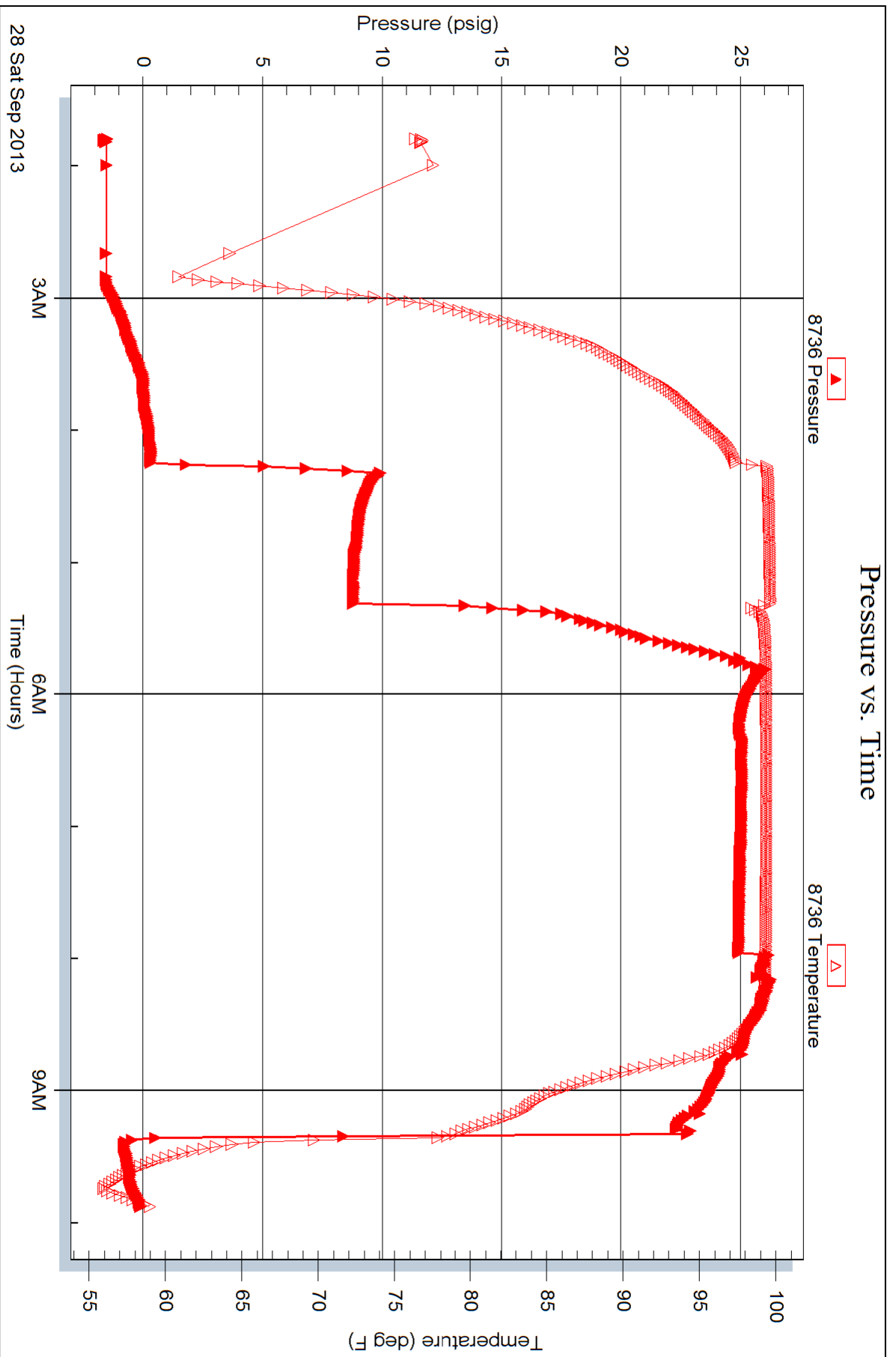
Serial #:

Laboratory Name:

Laboratory Location:

Recovery Comments:





Serial #: 8897

Inside

Samuel Gary Jr. Associates, Inc.

Witt #1-7

DST Test Number: 1

