

GEOLOGIST'S REPORT

DRILLING TIME AND SAMPLE LOG

BACH OIL PRODUCTION

WELL: KENNETH #1

LOC.: 1500' FNL & 330' FWL
 SEC. 9-2-19W
 PHILLIPS COUNTY, KANSAS
 API: 15-147-20721-00-00

ELEVATION

KB: 2217
 GL: 2212
 LOG MEASURED
 FROM: KB

SURFACE CASING

20# 8 5/8 "
 Casing set @ 222
 w/175 SX

PRODUCTION CASING

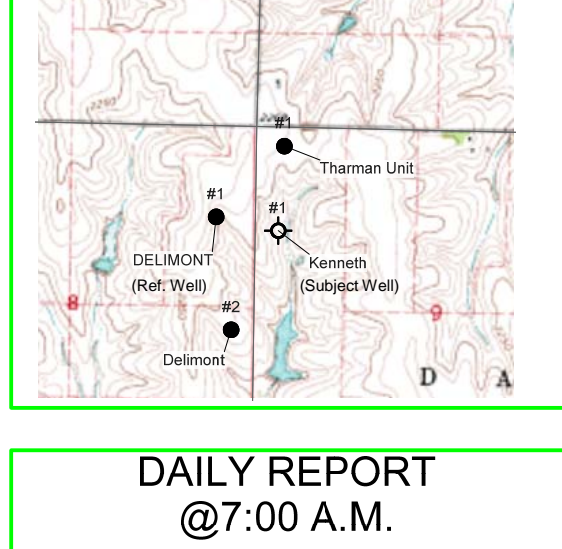
D&A

WELL LOG SURVEYS

CDL/DIL

ELECTRIC LOG TOPS

FORMATION	DEPTH	DATUM	POSITION
BFH	596	+1621	+6
Stone Corral	1818	+399	+2
Base Stone Corral	1841	+376	-3
Topeka	3179	-962	+2
Heebner	3386	-1169	+2
Toronto	3416	-1199	+1
Lansing	3433	-1216	+2
Muncie Creek	3543	-1326	Flat
Stark	3608	-1391	-1
Base Kansas City	3649	-1432	Flat



REFERENCE WELL:

Bach
 Delimont #1
 1320' FNL/570' FEL
 8-2-19W

DAILY REPORT

@ 7:00 A.M.

09-18-13 MIRU/SPUD
 09-19-13 505' Drilling
 09-20-13 2430' Drilling
 09-21-13 3260' Drilling
 09-22-13 3520' DST#1
 09-23-13 3686' RTD (DST#2)

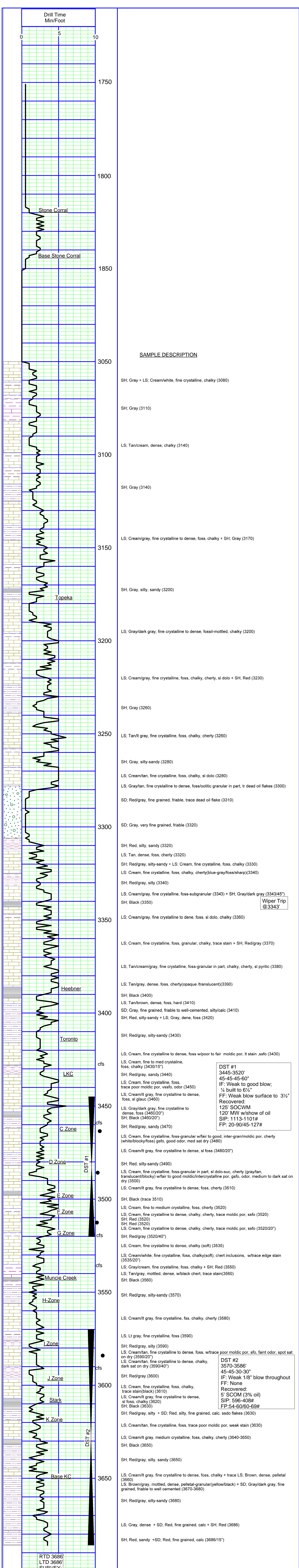
REMARKS AND RECOMMENDATIONS

This well was plugged and abandoned by the operator.

Respectfully submitted,

Robert J. Petersen

Robert J. Petersen



SAMPLE DESCRIPTION

SH; Gray + LS; Cream/white, fine crystalline, chalky (3080)

SH; Gray (3110)

LS; Tan/cream, dense, chalky (3140)

SH; Gray (3140)

LS; Cream/gray, fine crystalline to dense, foss, chalky + SH; Gray (3170)

SH; Gray, silty, sandy (3200)

LS; Gray/dark gray, fine crystalline to dense, fossil-mottled, chalky (3200)

LS; Cream/gray, fine crystalline, foss, chalky, cherty, sl dolo + SH; Red (3230)

SH; Gray (3260)

LS; Tan/lt gray, fine crystalline, foss, chalky, cherty (3260)

SH; Gray, silty-sandy (3280)

LS; Cream/tan, fine crystalline, foss, chalky, sl dolo (3280)

LS; Gray/tan, fine crystalline to dense, foss/oolitic granular in part, tr dead oil flakes (3300)

SD; Red/gray, fine grained, friable, trace dead oil flake (3310)

SD; Gray, very fine grained, friable (3320)

SH; Red, silty, sandy (3320)

LS; Tan, dense, foss, cherty (3320)

SH; Red/gray, silty-sandy + LS; Cream, fine crystalline, foss, chalky (3330)

LS; Cream, fine crystalline, foss, chalky, cherty(blue-gray/foss/sharp)(3340)

SH; Red/gray, silty (3340)

LS; Cream/gray, fine crystalline, foss-subgranular (3343) + SH; Gray/dark gray (3343/45')

SH; Black (3350)

LS; Cream/gray, fine crystalline to dense, foss, sl dolo, chalky (3360)

LS; Cream, fine crystalline, foss, granular, chalky, trace stain + SH; Red/gray (3370)

LS; Tan/cream/gray, fine crystalline, foss-granular in part, chalky, cherty, sl pyritic (3380)

LS; Tan/gray, dense, foss, cherty(opaque/translucent)(3390)

SH; Black (3400)

LS; Tan/brown, dense, foss, hard (3410)

SD; Gray, fine grained, friable to well-cemented, silty/calc (3410)

SH; Red, silty-sandy + LS; Gray, dense, foss (3420)

SH; Red/gray, silty-sandy (3430)

LS; Cream, fine crystalline to dense, foss w/poor to fair moldic por, lt stain ,sso (3430)

LS; Cream, fine to med crystalline, foss, chalky (3430/15')

SH; Red/gray, sandy (3440)

LS; Cream, fine crystalline, foss, trace poor moldic por, vssfo, odor (3450)

LS; Cream/lt gray, fine crystalline to dense, foss, sl glauc (3460)

LS; Gray/dark gray, fine crystalline to dense, foss (3460/20")

SH; Black (3460/20")

SH; Red/gray, sandy (3470)

LS; Cream, fine crystalline, foss-granular w/fair to good, inter-gran/moldic por, cherty (white/blocky/foss) gsfo, good odor, med sat dry (3480)

LS; Cream/lt gray, fine crystalline to dense, sl foss (3480/20")

SH; Red, silty-sandy (3490)

LS; Cream, fine crystalline, foss-granular in part, sl dolo-suc, cherty (gray/tan, translucent/blocky) w/fair to good moldic/intercrystalline por, gsfo, odor, medium to dark sat on dry (3500)

LS; Cream/lt gray, fine crystalline to dense, foss, cherty (3510)

SH; Black (trace 3510)

LS; Cream, fine to medium crystalline, foss, cherty (3520)

LS; Cream, fine crystalline to dense, chalky, cherty, trace moldic por, sso (3520)

SH; Red (3520)

LS; Cream, fine crystalline to dense, chalky, cherty, trace moldic por, sso (3520/20")

SH; Red/gray (3520/40")

LS; Cream, fine crystalline to dense, chalky (soft) (3535)

LS; Cream/white, fine crystalline, foss, chalky(soft), chert inclusions, w/trace edge stain (3535/20")

LS; Gray/cream, fine crystalline, foss, chalky + SH; Red (3550)

LS; Tan/gray, mottled, dense, w/black chert, trace stain(3560)

SH; Black (3560)

SH; Red/gray, silty-sandy (3570)

LS; Cream/lt gray, fine crystalline, foss, chalky, cherty (3580)

LS; Lt gray, fine crystalline, foss (3590)

SH; Red/gray, silty (3590)

LS; Cream/tan, fine crystalline to dense, foss, w/trace poor moldic por, sfo, faint odor, spot sat on dry (3590/20")

LS; Cream/tan, fine crystalline to dense, chalky, dark sat on dry (3590/40")

SH; Red/gray (3600)

LS; Cream, fine crystalline, foss, chalky, trace stain(black) (3610)

LS; Cream/lt gray, fine crystalline to dense, sl foss, chalky (3620)

SH; Black (3630)

SH; Red/gray, silty + SD; Red, silty, fine grained, calc, ssdo flakes (3630)

LS; Cream/tan, fine crystalline, foss, trace poor moldic por, weak stain (3630)

LS; Cream/lt gray, medium crystalline, foss, chalky, cherty (3640-3650)

SH; Black (3650)

SH; Red/gray, silty, sandy (3650)

LS; Cream/lt gray, fine crystalline to dense, foss, chalky + trace LS; Brown, dense, pelletal (3660)

LS; Brown/gray, mottled, dense, pelletal-granular(yellow/black) + SD; Gray/dark gray, fine grained, friable to well cemented (3670-3680)

SH; Red/gray, silty-sandy (3680)

LS; Gray, dense + SD; Red, fine grained, calc + SH; Red (3686)

SH; Red, sandy +SD; Red, fine grained, calc (3686/15')

DST #1
 3445-3520'
 45-45-60"
 IF: Weak to good blow;
 1/4" built to 6 1/2"
 FF: Weak blow surface to 3 1/2"
 Recovered:
 125' SOCWM
 120' MW w/show of oil
 SIP: 1113-1101#
 FP: 20-90/45-127#

Wiper Trip
 @ 3343'

RTD 3686'
 LTD 3686'
 SURVEY:
 1/2" @ 222'
 1" @ 3343'
 1" @ 3686'