

GEOLOGIST'S REPORT
DRILLING TIME AND SAMPLE LOG

Geologist on Well: Alex Chapin

LEASE: Rogers #5

FIELD: Marcotte

LOCATION: 1895 FNL & 1755 F-WL

SEC: 10 TWP: 10S RGE: 20W

COUNTRY: Kooks STATE: Kansas

CONTRACTOR: American Eagle Rig #2

SPUD: 2/3/01.3 COMP: 31/0/0.3

RTD: 4300' (-2052) LTD: 4307' (-2052)

MUD UP: 3300 TYPE MUD: CHEMICAL

SAMPLES SAVED FROM: 3300 TO RTD

DRILLING TIME KEPT FROM: 3100 TO RTD

SAMPLES EXAMINED FROM: 3300 TO RTD

GEOLOGICAL SUPERVISION FROM: 3300

REFERENCE WELL: Sparks A#5

FORMATION: Sample Tops

Anhydrite 1709' (+541)

Base Anhydrite 1749' (+501)

Heebner 3480' (-1230)

Lansing 3519' (-1269)

BKC 3746' (-1488)

Arbuckle 3803' (-1553)

RTD 4300' (-2050)

LTD 4307' (-2052)

ELEVATIONS
 KB: 2250

GL: 2243

DF: _____

Measurements are All From Kelly Bushing

CONDUCTOR SURFACE: 8.58' @ 2211'

PRODUCTION: 5.1/2 @ 3881'

ELECTRICAL SURVEYS

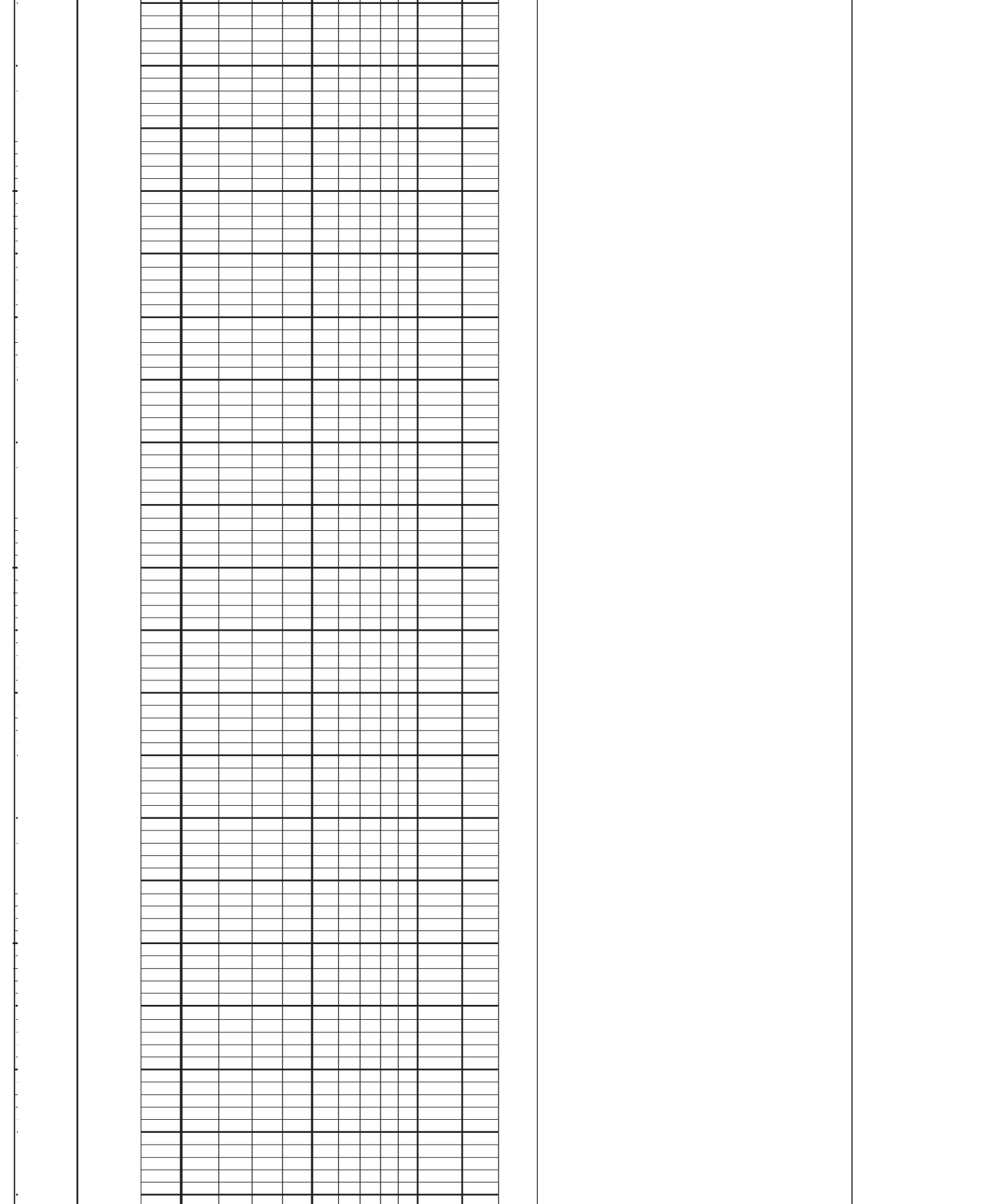
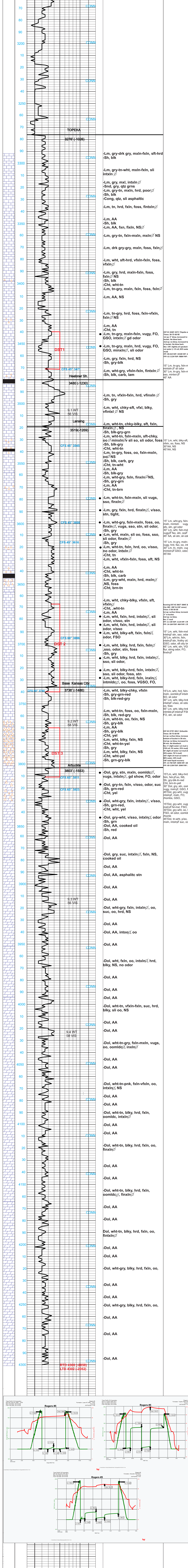
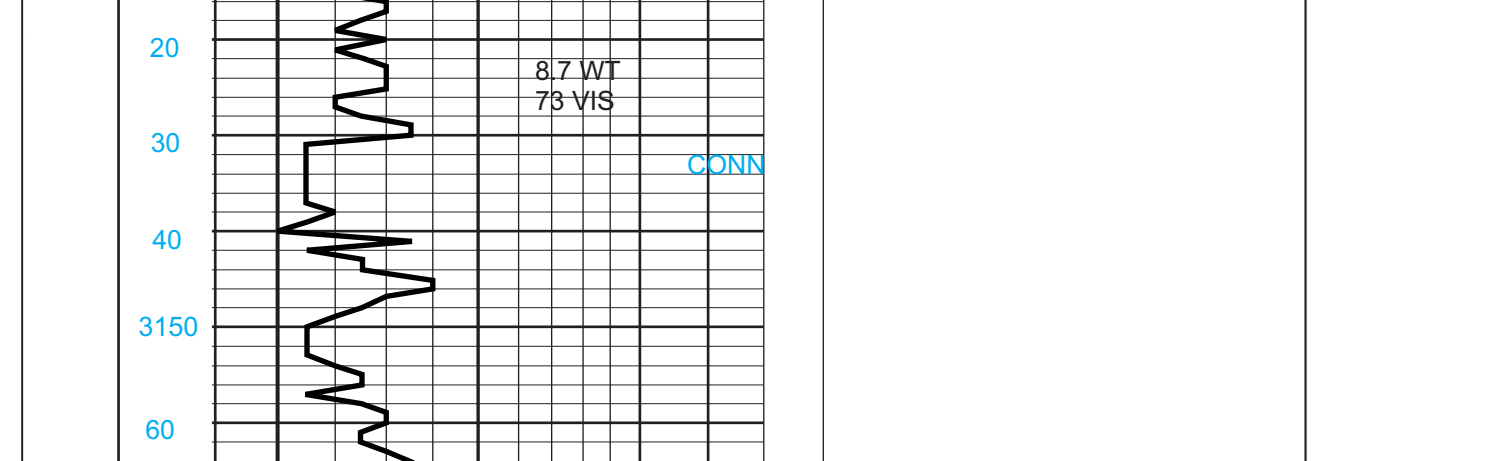
D.L. DLCP

NEBOKS

REMARKS

Due to the low structural nature of this well it did not prove to be commercial and therefore was made in to a SWDW.

LEGEND



TRANS PACIFIC OIL CORPORATION
 2000 West 10th Street, Suite 1000, Lawrence, KS 66044
 Phone: (785) 843-1111 Fax: (785) 843-1112
 Email: info@transpacificoil.com