

chert-boney wht/crm

Ls-gry/wht, fxln, fossils, dense, poor vi spor, chalky, chert-A/A

Ls-crm/tan, fxln, sucrosic, poor vis por, dense, fossils,

A/A- Shale-gy, silty,

Ls-crm/tan, fxln, dense, sucrosic, fossils, poor vis por, shale-red/brwn

Ls-crm/wht/lt gry, fxln, slightly sucrosic, poor vis por, chalky

Ls-wht/crm, fxln, dense, cherty in part, poor vis por, shale-grn/gry

Ls- wht/crm, fxln, dense, poor vis por,

A/A Sand- wht/clear, fine grained, sub round well cemented, poor vis por,

A/A Shale-brown/red

A/a Ls- Wht/crm, fxln, dense, poor vis por

A/A

Ls-wht/lt gry, fxln, dense, poor vis por,

A/A

Ls-crm/tan, fxln, dense, sucrosicm poor vis por,

A/A Chert- boney wht

Ls-crm/tan, f-med xln, dense, sucrosic, poor vis por, cherty

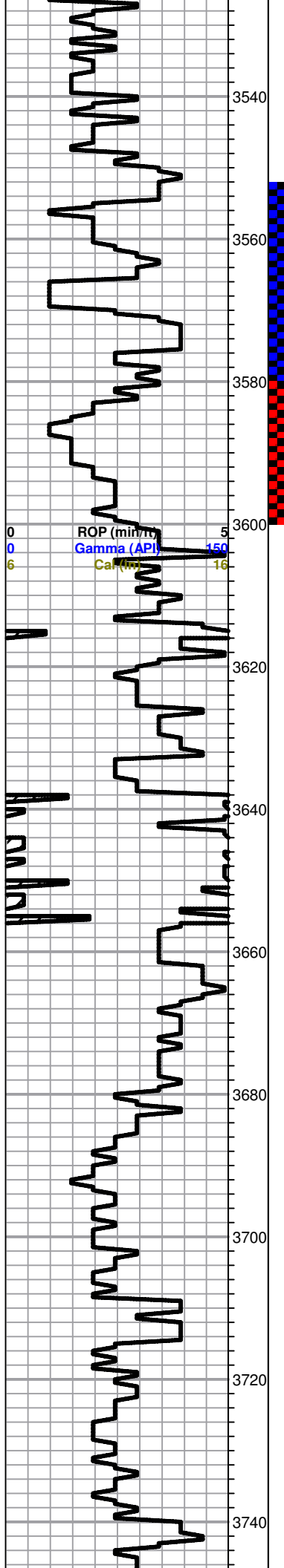
Ls-wht/lt gry, fxln, chalky, poor ppt por, dark brown to black stains, NSFO

Ls- A/A

Heebner 3524.0 (-964.0) -962.0

0	C3 (units)	100
0	C4 (units)	100
0	Total Gas (units)	100
0	C1 (units)	100
0	C2 (units)	100
0	C3 (units)	100
0	C4 (units)	100

DST #1 3553-3580
30-45-45-60



Trace Black carbon shale

Shale-gry/gry, limey

Toronto 3552.0 (-992.0) -994.0

Ls-gry/wht, fxln, poor ppt por, dark brown to black stains, NSFO, chalky,

Lansing 3564.0 (-1004.0) -1004.0

Ls-wht/crm, fxln, ool, poor iner xln to iner ool por, dark brown to black stains, Broken open Fair SFO, faint odor, chalky

Ls-wht/crm, fxln, slightly ool, poor to fair sub oom por, dark brown stains, Fair show free oil, faint odor, slightly chalky

Ls-tan/gry, fxln, poor to fair ppt to iner xln por w/scattered vug por, heavy brown staining, broken open Good SFO, fair odor, slightly chalky

Ls-crm/wht/lt gry, fxln, poor scattered por, slightly chalky, Dark brown spotty stains, Broken open Trace weak show gummy oil,

Ls-crm/tan, fxln, dense, poor scattered por, dense, cherty in part, Shale-brnw/red

Ls-wht/lt gry, fxln, poor scattered por, scattered dark brown stains, NSFO, no odor, chalky in part,

Ls-crm/lt gry/tan, fxln, dense, poor vis por, cherty in part, slightly chalky

Ls-lt gey/wht, fxln, slightly ool, poor scattered ppt por, poor edge staining, NSFO, chalky, chert-tan/crm

Ls-crm/tan, fxln, poor ppt to iner xln por, scattered dark brown stains, NSFO, chalky, cherty

Ls-ltgry/crm, fxln, poor vis por, dense, Shale-brwn/red

A/A

Ls-lt gry/wht, fxln, poor vis por, dense, slightly chalky

Ls-crm/tan/gry, fxln, dense, poor vis por, slightly cherty in part, shale-brwn abundant

Ls-lt gry/wht/crm, fxln, poor scattered por, trace dark brown stains, NSFO, no odor, slightly chalky

Ls-crm/tan/lt gry, fxln, dne,s,e poor scattered por, trace stains, NSFO, shale-brown/red

Ls-crm/tan, fxln, dense, poor vis por, dense, cherty in part, Shale- A/A

IF: Built to 3"

Recovery:

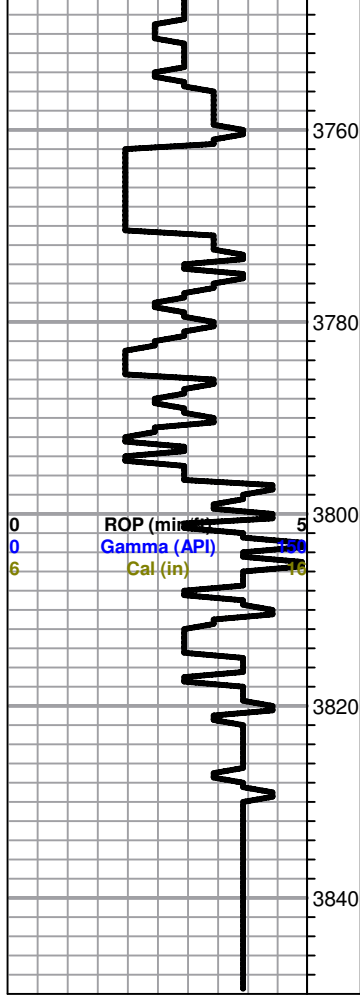
10' Oil
80' SIOCWM(5o 10w 85m)
120' Water

Pressures:

ISIP 1252 psi
FSIP 1251 psi
IFP 41-69 psi
FFP 76-120 psi
HSH 1692-1678 psi

DST #2 3580-3600

0	Total Gas (units)	100
0	C1 (units)	100
0	C2 (units)	100
0	C3 (units)	100
0	C4 (units)	100



A/A Few fossils/ool, trace scattered dark brown stains, NSF0, chalky, slightly cherty

**Ls-Wht/lt gry, fxln, poor scattered por, chalky in part,
Shale-red/brown sofft**

Ls-wht/crm/lt gry, fxln poor vis por

Shale-brown/red-soft

A/A

Ls-wht/lt gry, fxln, poor vis por, chalky in part,

A/A Shale-brown/red soft

0	Total Gas (units)	100
0	C1 (units)	100
0	C2 (units)	100
0	C3 (units)	100
0	C4 (units)	100