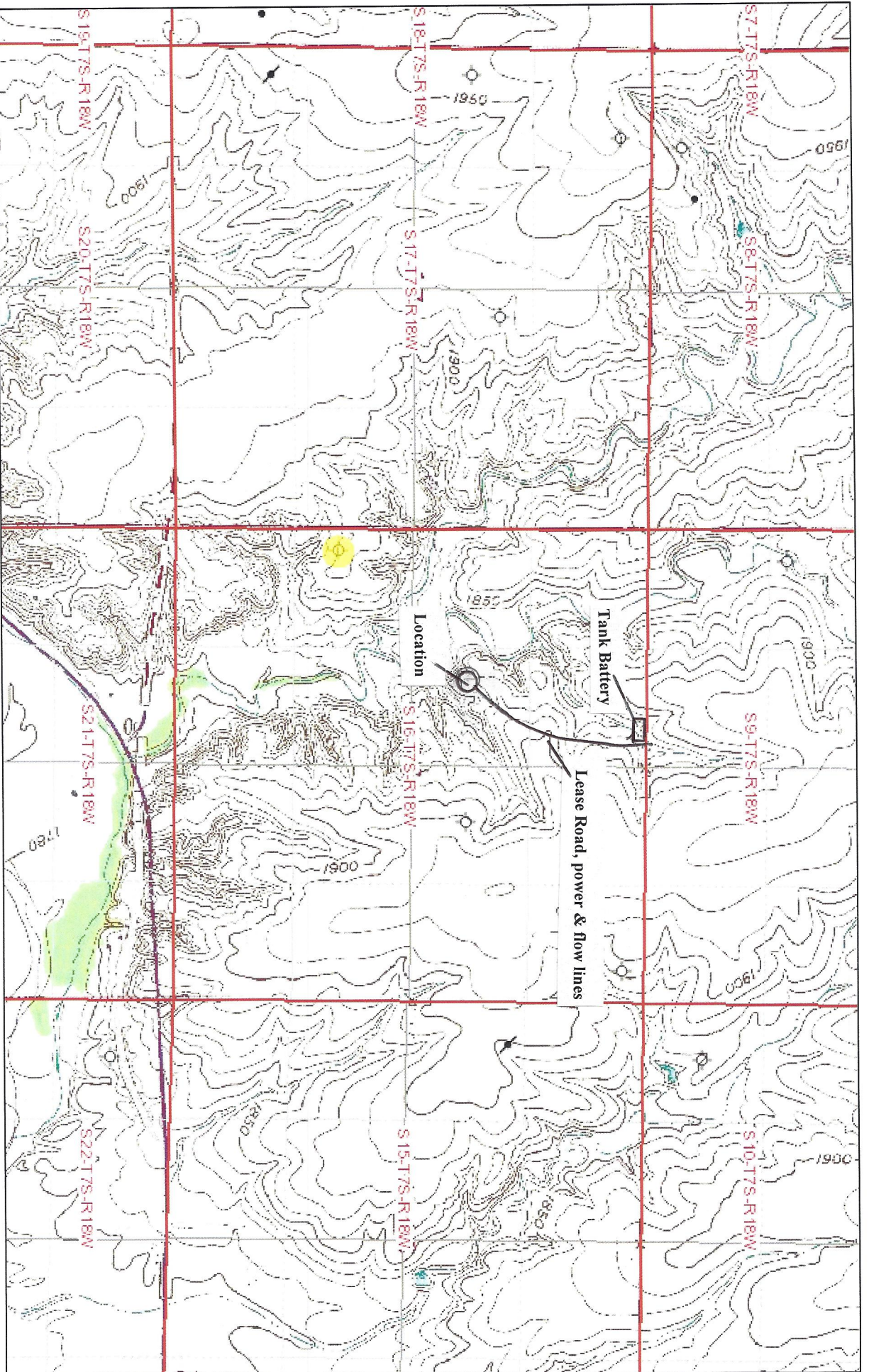
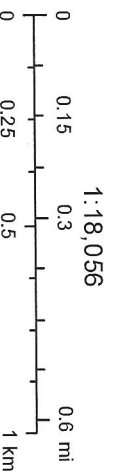


# KEISTWETTER



January 6, 2014

**NW 1/4 SEC 16 T7S, R18W  
ROOKS COUNTY, KANSAS**



Sources: Esri, DeLorme, NAVTEQ, TomTom, Intermap, increment P Corp.,  
GEBCO, USGS, FAO, NPS, NRCAN, Geobase, IGN, Kadaster NL