



Office (620) 588-4250 212 Main St. • P.O. Box 215 • Claflin, KS 67525 Home (620) 587-3444

GEOLOGIST'S REPORT

DRILLING TIME AND SAMPLE LOG

COMPANY Blue Ridge Petroleum Corp.

LEASE Rule #1-31

FIELD Wildcat

LOCATION SE-NE-NW-SE (B1333.FEL)

SEC 31 TWP 2 RGE 24

COUNTY Norton STATE Kansas

CONTRACTOR L.D. Drilling Co. (Rig #1)

SPUD 11/4/13 COMP 11/13/13

RTD 3747 LTD 3747

MUD UP 3000 TYPE MUD Chemical

ELEVATIONS

KB 2421

DF _____

GL 2416

Measurements Are All From KB-

CASING SURFACE 8 5/8 @ 263

PRODUCTION 5/2" @ 3746'

ELECTRICAL SURVEYS

By Nabors,
DPL, GDL, CUL, PE, HBL, c, 50mc

SAMPLES SAVED FROM _____ TO 3100

DRILLING TIME KEPT FROM _____ TO 3200

SAMPLES EXAMINED FROM _____ TO 3200

GEOLOGICAL SUPERVISION FROM _____ TO 3400

GEOLOGIST ON WELL Tim Musgrove & Clint Musgrove

FORMATION TOPS

LOG

SAMPLES

Anhydrite 1962 +159

Base Anhydrite 1991 +130

Hebner 3356 -935

Oranto 3386 -965

Wansing 3488 -979

Base Kansas City 3589 -1168

Granite Wash 3885 -1264

R.T.D 3747 -1326

L.T.D 3747

REMARKS

5 1/2" production casing set & cemented on the Rule #1-31.

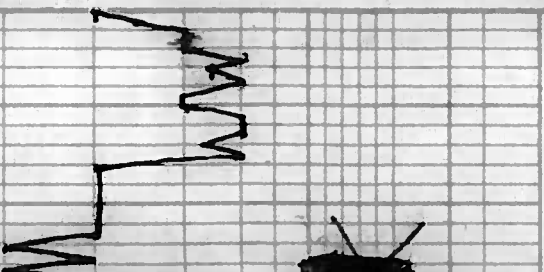
Respectfully Submitted
James C. Musgrove
Petroleum Geologist.

LEGEND

Anhydrite	Salt	Sandstone	Shale	Carb sh	Limestone	Ool. Lime	Chert	Dolomite

DRILLING TIME
Logarithmic Scale)

5 1 2 3 4 5 10 15 20 30



SAMPLE DESCRIPTIONS

REMARKS

L.S. tan, gray, Fxl. few Foss
DAS,

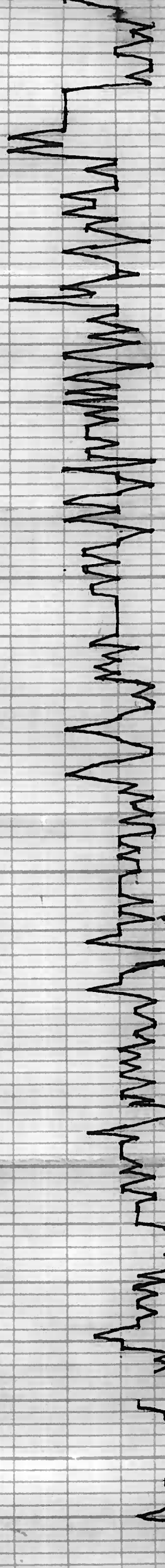
Sh. Greenish, Brick Red, Soft

LOGOHLIT

HLPDQ

20

20
40
60
80
3300
20
40
60
80
3400
A
20
C
40
D
60
E



Heebner
3358
(-937)

Jaranto
3392
(-971)

Lansing
3402
(-981)

-1034
→ geograph Not
= kicked in

L.S. tan, gray, Fxl, Few Foss
Dns,

Sh. Greenish, Brick Red, Soft

L.S. Crm-Whit Fxl, Dns, Poor
Vis ϕ . N/S.

L.S. A/A. Sh. gray-lt. brn.

L.S. Crm-Whit, Fxl, Foss, Poor
Scatt ϕ Sh. Chiky, N/S.

Blk Carb. Sh.

L.S. A/A.

-2421 KB-

L.S. brn, matt, Chiky Lt.
brn stn, NSFO, N/O.

L.S. Whit, Chiky, Few Foss
Poor Vis ϕ , N/S.

Sh. Blk carb, brick red, &
Aque green, Trc. L.S. tan
Ool, N/S.

L.S. Whit/crm, Fxl, Foss,
Dns poor Vis ϕ .

Blk carb stn,

Sh. brick red/greenish.

L.S. crm, to Whit, Foss in pres
Sh. Chiky, Dns, poor Vis ϕ , N/S.

L.S. Crm-Whit, Fxl, V. Chiky, Poor
Scatt ϕ , SFO, Lt. golden brn stn,
odor???

DSC #1
3391-3435
30-30-45' 60

L.S. Crm-Whit, F-Mix, Pr-Fr. Scatt
 ϕ , SFO, Lt. brn stn, no odor

Blow good
(Bob 26")

L.S. Crm, Whit, Fxl, ~~...~~, Dns, N/S.
Trc. Mar. Sh.

2nd opening, good
(Bob 43 min)

L.S. Whit, Fxl, Foss, Dns, Lt.
SFO, Lt. brn stn. No odor

Rec, 126' muddy water
(No oil)

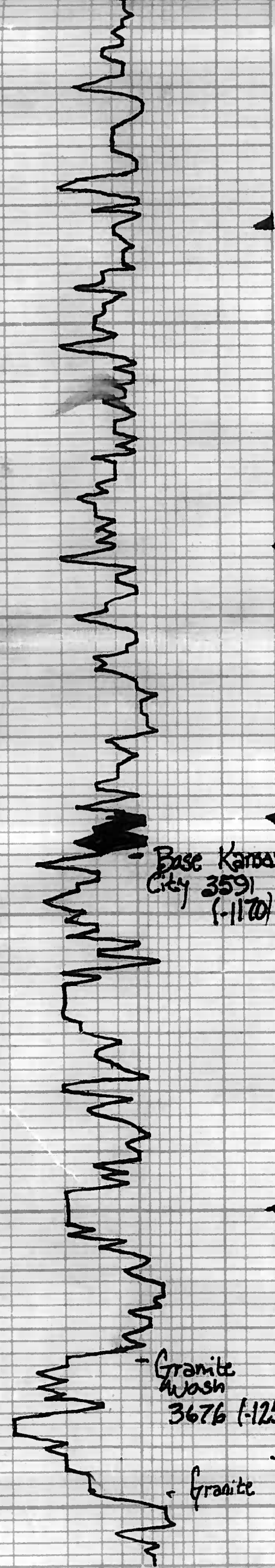
L.S. Crm, Fxl, good Scatt ϕ , SFO.
Dns, Lt. golden brn stn, No odor
Abd. Red Sh.

pressures
161p 984 Pst
55p 1016
31p 27-71
55p 75-120

L.S. wh/crm, ool, faint, p;
Tr brn stn, no odor, SFO

L.S. wh/crm, Fxl, red sh N/S

②
60
70
80
3580
20
40
60
80
3600
20
40
60
80
3700
20



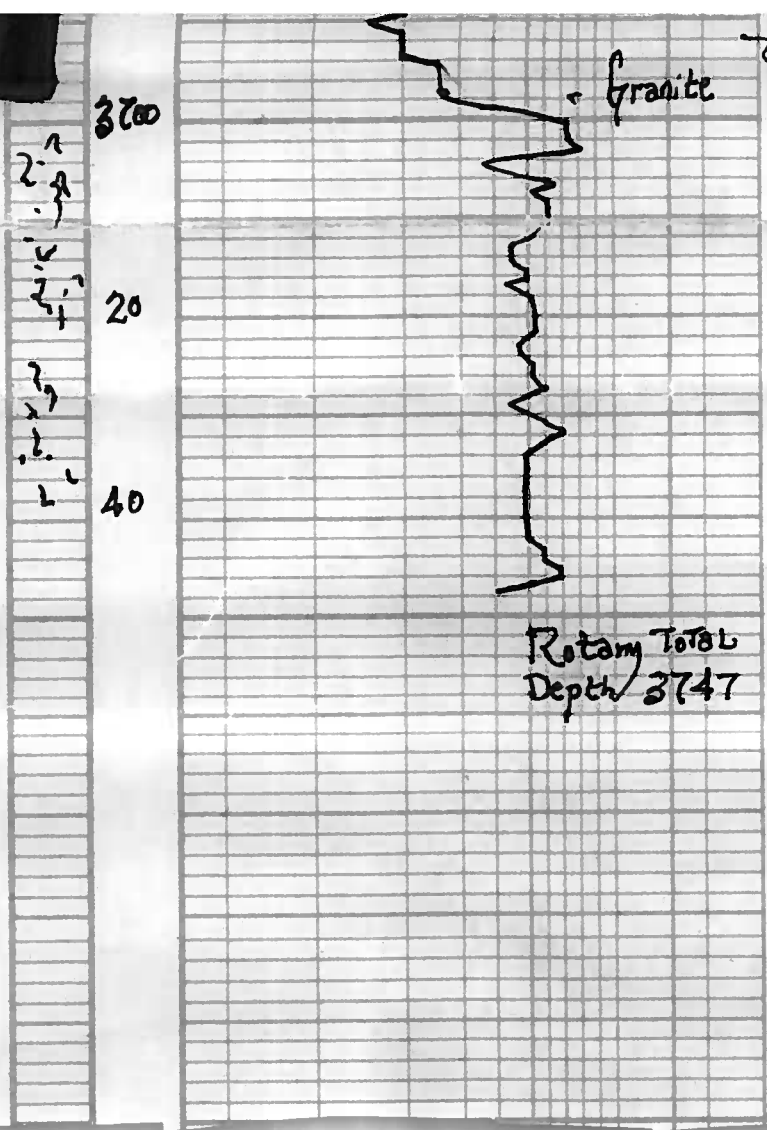
Abd. Red sh.
LS, wh/crm, ool, faint sp;
Tr brk stal, no ool, Sfo
LS, wh/crm, Fxl, real sh N/S
Red sh
LS, gr/crm, Fxl, faint br stal N/S
LS, wh, Fxl, ool in part, no ool
LS, wh/crm, Fxl, Chazy
Tr Poor brk
LS, wh/crm, Fxl; fassy
Chazy; Sclt ppt,
brown sh/sclt; Sfo; ft. odor
ool in part
LS, ool; Sptky 60
slug mar sh.
red mar sh
LS, wh/gry, Fxl,
foss in part, Chazy
Poor
LS, wh/gry/med sh, Chazy
glauc ms
slug mar/soft sh
LS, wh/gry; Chazy, few sandy
ms
Dr. up med green
ool. sand ms
LS, wh; med tinted
mar - brown red blocky
sh.
Dr. mar tinted LS
Qtz; sub rounded, rounded
slab; + PK/clear feldspn, mica
Poor sh; Tr Co, no dr
+ Tr. v. gl; glauc. sh; Sclt
aa; blue sandy sh; ??
PK/orange feldspn; Tr.
clear Qtz; v. mica material

pressures
Isip 984 Psi
fsip 1016
IAP 27-71
SFP 75-120
MSH 1692
-1681

Dst #2
3435-3484
30-30-30-30
Blow; weak (died)
18 mins
2nd opening; no blow
Rec; 2' mud
pressures, Isip 47 Psi
fsip 34
IAP 20-21
SFP 21-22
MSH 1692-1681

Dst #3
3490-3590
30-30-30-30
Blow; weak (1")
2nd opening; no blow
Rec; 6' mud with
trace of oil
pressures, Isip 200 Psi
fsip 95
IAP 21-23
SFP 24-25
MSH 1742
-1742

Dst #4
3584-3697
15-20-30-45
Blow; strong
(Bob 8 1/2 min)
2nd opening; strong
(Bob 7 min)
Rec; 285' gas in pip
95' Gassy mud
oil
(50% mud;
3390 oil;
1790 gas)
255' Gassy Heavy
oil cut mud
(50% mud; 3390
1790 gas)



f. v. slt, glauc. sd, scatt.
 aa, blk. sandy sh, ??

pk/orange feldspar /
 clear qtz, mica material

3 2
 acct red sh.

feldspar / qtz a.c.

3 2
 aa

1790 gms)
 255' Gassy Heavy
 oil cut mud
 (50% mud; 33% o.c.)
 (1790 gms)
 PRESSURES) ISI p 735 p
 fsi p 754 p
 2 HP 27-99
 4 HP 105-124
 HSH
 1821-1815 p