



DRILL STEM TEST REPORT

Prepared For: **American Warrior Inc**

PO Box 399
Garden City KS 67846

ATTN: Kevin Timson

DBD #3-28

28-18s-25w Ness,KS

Start Date: 2013.10.31 @ 13:48:00

End Date: 2013.10.31 @ 21:56:09

Job Ticket #: 49074 DST #: 1

Trilobite Testing, Inc

PO Box 362 Hays, KS 67601

ph: 785-625-4778 fax: 785-625-5620

Printed: 2013.11.06 @ 09:58:51



TRILOBITE TESTING, INC.

DRILL STEM TEST REPORT

American Warrior Inc
 PO Box 399
 Garden City KS 67846
 ATTN: Kevin Timson

28-18s-25w Ness,KS
DBD #3-28
 Job Ticket: 49074 **DST#: 1**
 Test Start: 2013.10.31 @ 13:48:00

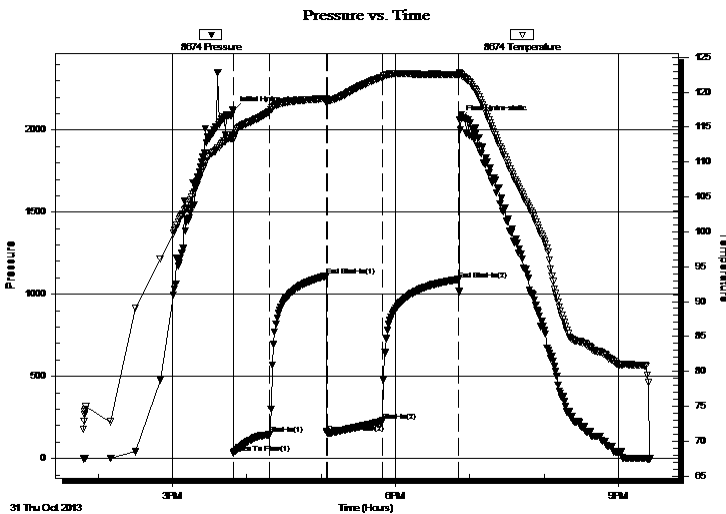
GENERAL INFORMATION:

Formation: **Ft. Scott**
 Deviated: No Whipstock: ft (KB) Test Type: Conventional Bottom Hole (Initial)
 Time Tool Opened: 15:48:55 Tester: Will MacLean
 Time Test Ended: 21:56:09 Unit No: 58
Interval: 4280.00 ft (KB) To 4340.00 ft (KB) (TVD) Reference Elevations: 2438.00 ft (KB)
 Total Depth: 4340.00 ft (KB) (TVD) 2428.00 ft (CF)
 Hole Diameter: 7.88 inches Hole Condition: Good KB to GR/CF: 10.00 ft

Serial #: 8674 Inside
 Press @ Run Depth: 225.05 psig @ 4282.00 ft (KB) Capacity: 8000.00 psig
 Start Date: 2013.10.31 End Date: 2013.10.31 Last Calib.: 2013.10.31
 Start Time: 13:48:00 End Time: 21:26:09 Time On Btm: 2013.10.31 @ 15:48:40
 Time Off Btm: 2013.10.31 @ 18:51:39

TEST COMMENT: IF- Weak Surface Blow Built to BOB in 9 3/4 min
 IS- Weak Surface Blow in 5 min
 FF- Weak Surface Blow Built to BOB in 11 min
 FS- Weak Surface Blow in 1 1/4 min Built to 1 3/4"

PRESSURE SUMMARY



Time (Min.)	Pressure (psig)	Temp (deg F)	Annotation
0	2117.88	113.91	Initial Hydro-static
1	32.65	113.24	Open To Flow (1)
30	145.32	117.27	Shut-In(1)
76	1111.07	119.14	End Shut-In(1)
76	154.07	118.81	Open To Flow (2)
121	225.05	122.16	Shut-In(2)
183	1090.19	122.53	End Shut-In(2)
183	2064.15	122.85	Final Hydro-static

Recovery

Length (ft)	Description	Volume (bbl)
124.00	GMCW 5%g 9%m 86%w	0.61
124.00	GMCW 7%g 21%m 71%w with Skim	0.61
62.00	OGMCW 4%oil 16%g 37%m 43%w	0.61
62.00	OWGCM 18%oil 20%w 27%g 35%m	0.87
109.00	WGMCO 4%w 6%g 40%m 50%oil	1.53
0.00	1069' of GIP	0.00

Gas Rates

Choke (inches)	Pressure (psig)	Gas Rate (Mcf/d)



**TRILOBITE
TESTING, INC.**

DRILL STEM TEST REPORT

TOOL DIAGRAM

American Warrior Inc
 PO Box 399
 Garden City KS 67846
 ATTN: Kevin Timson

28-18s-25w Ness,KS
DBD #3-28
 Job Ticket: 49074 **DST#: 1**
 Test Start: 2013.10.31 @ 13:48:00

Tool Information

Drill Pipe:	Length: 3984.00 ft	Diameter: 3.80 inches	Volume: 55.89 bbl	Tool Weight: 2000.00 lb
Heavy Wt. Pipe:	Length: 0.00 ft	Diameter: 0.00 inches	Volume: 0.00 bbl	Weight set on Packer: 30000.00 lb
Drill Collar:	Length: 277.00 ft	Diameter: 2.25 inches	Volume: 1.36 bbl	Weight to Pull Loose: 10000.00 lb
		Total Volume: 57.25 bbl		Tool Chased ft
Drill Pipe Above KB:	8.00 ft			String Weight: Initial 70000.00 lb
Depth to Top Packer:	4280.00 ft			Final 72000.00 lb
Depth to Bottom Packer:	ft			
Interval between Packers:	60.00 ft			
Tool Length:	87.00 ft			
Number of Packers:	2	Diameter: 6.75 inches		

Tool Comments:

Tool Description	Length (ft)	Serial No.	Position	Depth (ft)	Accum. Lengths
------------------	-------------	------------	----------	------------	----------------

Change Over Sub	1.00			4254.00	
Shut In Tool	5.00			4259.00	
Hydraulic tool	5.00			4264.00	
Jars	5.00			4269.00	
Safety Joint	2.00			4271.00	
Packer	5.00			4276.00	27.00 Bottom Of Top Packer
Packer	4.00			4280.00	
Stubb	1.00			4281.00	
Perforations	1.00			4282.00	
Recorder	0.00	8355	Outside	4282.00	
Recorder	0.00	8674	Inside	4282.00	
Perforations	20.00			4302.00	
Change Over Sub	1.00			4303.00	
Drill Pipe	31.00			4334.00	
Change Over Sub	1.00			4335.00	
Bullnose	5.00			4340.00	60.00 Bottom Packers & Anchor
Total Tool Length:		87.00			



**TRILOBITE
TESTING, INC.**

DRILL STEM TEST REPORT

FLUID SUMMARY

American Warrior Inc
PO Box 399
Garden City KS 67846
ATTN: Kevin Timson

28-18s-25w Ness,KS
DBD #3-28
Job Ticket: 49074 **DST#: 1**
Test Start: 2013.10.31 @ 13:48:00

Mud and Cushion Information

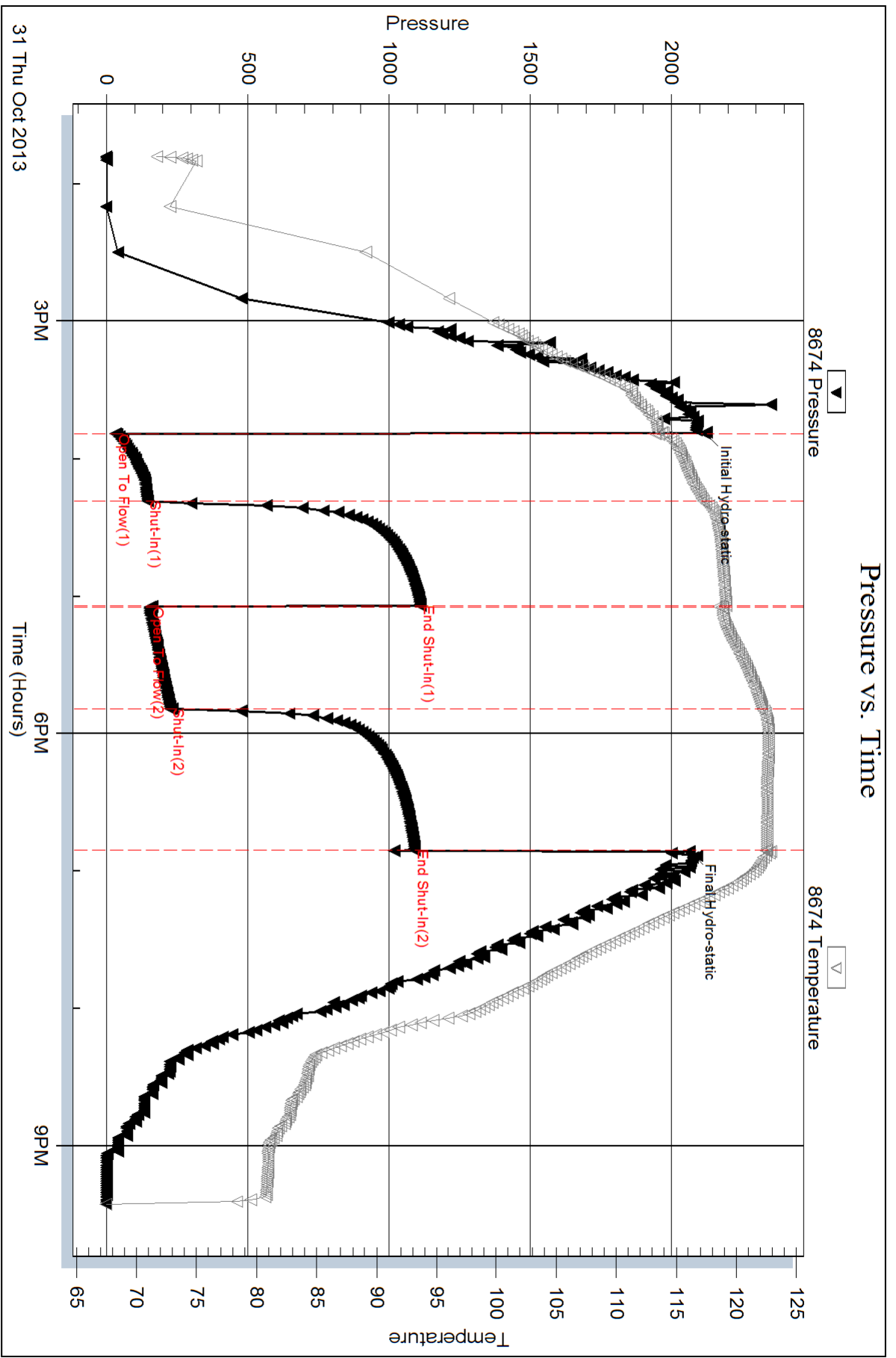
Mud Type: Gel Chem	Cushion Type:	Oil API:	deg API
Mud Weight: 9.00 lb/gal	Cushion Length: ft	Water Salinity: 67000 ppm	
Viscosity: 52.00 sec/qt	Cushion Volume: bbl		
Water Loss: 6.77 in ³	Gas Cushion Type:		
Resistivity: ohm.m	Gas Cushion Pressure: psig		
Salinity: 2800.00 ppm			
Filter Cake: 1.00 inches			

Recovery Information

Recovery Table

Length ft	Description	Volume bbl
124.00	GMCW 5%g 9%m 86%w	0.610
124.00	GMCW 7%g 21%m 71%w with Skim of Oil	0.610
62.00	OGMCW 4%oil 16%g 37%m 43%w	0.606
62.00	OWGCM 18%oil 20%w 27%g 35%m	0.870
109.00	WGMCO 4%w 6%g 40%m 50%oil	1.529
0.00	1069' of GIP	0.000

Total Length: 481.00 ft Total Volume: 4.225 bbl
 Num Fluid Samples: 0 Num Gas Bombs: 0 Serial #:
 Laboratory Name: Laboratory Location:
 Recovery Comments: RW is .131 @ 59f = 67000

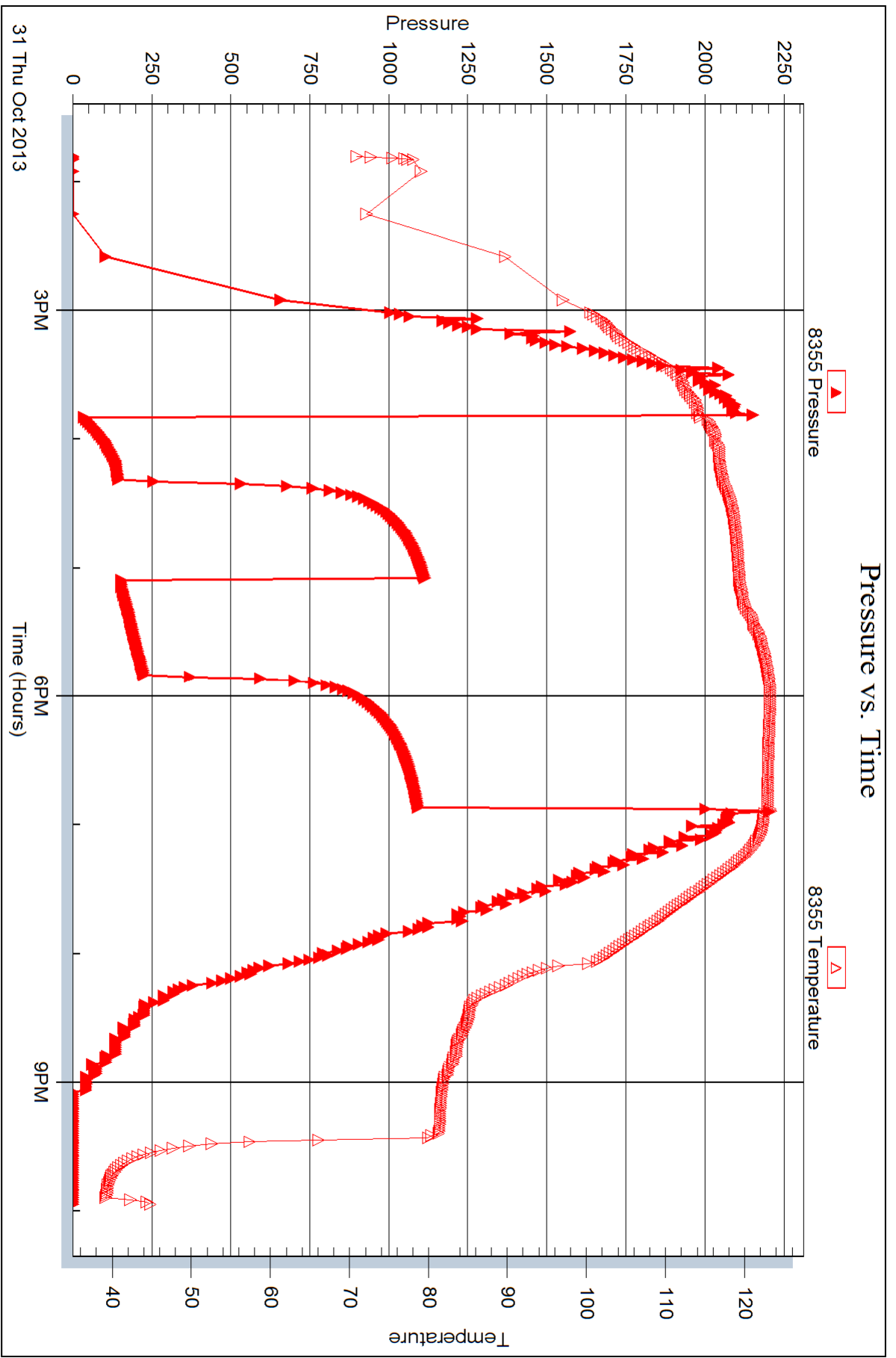


Serial #: 8355

Outside American Warrior Inc

DBD#3-28

DST Test Number: 1





DRILL STEM TEST REPORT

Prepared For: **American Warrior Inc**

PO Box 399
Garden City KS 67846

ATTN: Kevin Timson

DBD #3-28

28-18s-25w Ness,KS

Start Date: 2013.11.01 @ 11:26:00

End Date: 2013.11.01 @ 17:48:54

Job Ticket #: 49075 DST #: 2

Trilobite Testing, Inc

PO Box 362 Hays, KS 67601

ph: 785-625-4778 fax: 785-625-5620

Printed: 2013.11.06 @ 09:58:20



TRILOBITE TESTING, INC.

DRILL STEM TEST REPORT

American Warrior Inc
 PO Box 399
 Garden City KS 67846
 ATTN: Kevin Timson

28-18s-25w Ness,KS
DBD #3-28
 Job Ticket: 49075 **DST#: 2**
 Test Start: 2013.11.01 @ 11:26:00

GENERAL INFORMATION:

Formation: **Mississippi**
 Deviated: No Whipstock: ft (KB)
 Time Tool Opened: 13:25:55
 Time Test Ended: 17:48:54
 Interval: **4346.00 ft (KB) To 4420.00 ft (KB) (TVD)**
 Total Depth: 4420.00 ft (KB) (TVD)
 Hole Diameter: 7.88 inches Hole Condition: Good
 Test Type: Conventional Bottom Hole (Reset)
 Tester: Will MacLean
 Unit No: 58
 Reference Elevations: 2438.00 ft (KB)
 2428.00 ft (CF)
 KB to GR/CF: 10.00 ft

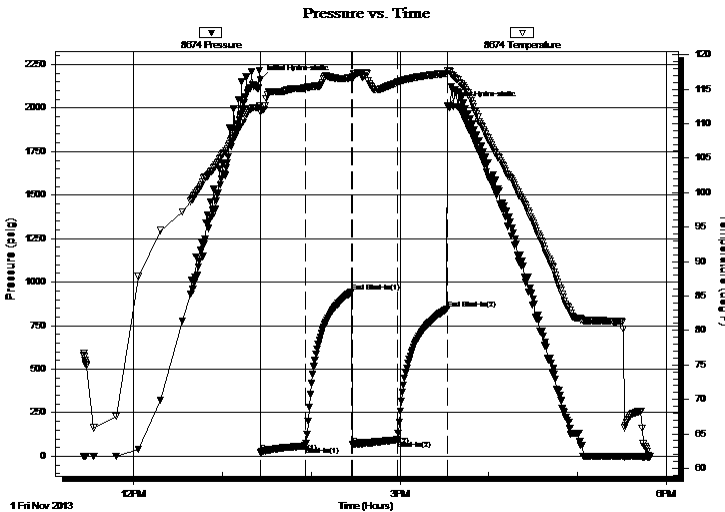
Serial #: 8674

Inside

Press @ Run Depth: 93.69 psig @ 4347.00 ft (KB) Capacity: 8000.00 psig
 Start Date: 2013.11.01 End Date: 2013.11.01 Last Calib.: 2013.11.01
 Start Time: 11:26:00 End Time: 17:48:54 Time On Btm: 2013.11.01 @ 13:25:40
 Time Off Btm: 2013.11.01 @ 15:32:25

TEST COMMENT: IF- Weak Surface Blow Built to 3 1/4"
 IS- No Blow
 FF- Weak Surface Blow Built to 3/4"
 FS- No Blow

PRESSURE SUMMARY



Time (Min.)	Pressure (psig)	Temp (deg F)	Annotation
0	2163.88	112.59	Initial Hydro-static
1	23.95	111.70	Open To Flow (1)
31	59.21	115.13	Shut-In(1)
62	944.02	116.70	End Shut-In(1)
62	65.94	116.45	Open To Flow (2)
93	93.69	115.94	Shut-In(2)
127	847.59	117.31	End Shut-In(2)
127	2014.37	117.72	Final Hydro-static

Recovery

Length (ft)	Description	Volume (bbl)
62.00	WOCM 2%w 4%oil 94%m	0.30
64.00	OCM 7%oil 93%m	0.31

* Recovery from multiple tests

Gas Rates

Choke (inches)	Pressure (psig)	Gas Rate (Mcf/d)



**TRILOBITE
TESTING, INC.**

DRILL STEM TEST REPORT

TOOL DIAGRAM

American Warrior Inc
PO Box 399
Garden City KS 67846
ATTN: Kevin Timson

28-18s-25w Ness,KS
DBD #3-28
Job Ticket: 49075 **DST#: 2**
Test Start: 2013.11.01 @ 11:26:00

Tool Information

Drill Pipe:	Length: 4048.00 ft	Diameter: 3.80 inches	Volume: 56.78 bbl	Tool Weight:	2000.00 lb
Heavy Wt. Pipe:	Length: 0.00 ft	Diameter: 0.00 inches	Volume: 0.00 bbl	Weight set on Packer:	24000.00 lb
Drill Collar:	Length: 277.00 ft	Diameter: 2.25 inches	Volume: 1.36 bbl	Weight to Pull Loose:	4000.00 lb
			<u>Total Volume: 58.14 bbl</u>	Tool Chased	ft
Drill Pipe Above KB:	6.00 ft			String Weight: Initial	70000.00 lb
Depth to Top Packer:	4346.00 ft			Final	70000.00 lb
Depth to Bottom Packer:	ft				
Interval between Packers:	74.00 ft				
Tool Length:	101.00 ft				
Number of Packers:	2	Diameter:	6.75 inches		
Tool Comments:					

Tool Description	Length (ft)	Serial No.	Position	Depth (ft)	Accum. Lengths
-------------------------	--------------------	-------------------	-----------------	-------------------	-----------------------

Tool Description	Length (ft)	Serial No.	Position	Depth (ft)	Accum. Lengths
Change Over Sub	1.00			4320.00	
Shut In Tool	5.00			4325.00	
Hydraulic tool	5.00			4330.00	
Jars	5.00			4335.00	
Safety Joint	2.00			4337.00	
Packer	5.00			4342.00	27.00 Bottom Of Top Packer
Packer	4.00			4346.00	
Stubb	1.00			4347.00	
Recorder	0.00	8355	Outside	4347.00	
Recorder	0.00	8674	Inside	4347.00	
Perforations	4.00			4351.00	
Change Over Sub	1.00			4352.00	
Drill Pipe	62.00			4414.00	
Change Over Sub	1.00			4415.00	
Bullnose	5.00			4420.00	74.00 Bottom Packers & Anchor

Total Tool Length: 101.00



**TRILOBITE
TESTING, INC.**

DRILL STEM TEST REPORT

FLUID SUMMARY

American Warrior Inc
PO Box 399
Garden City KS 67846
ATTN: Kevin Timson

28-18s-25w Ness,KS
DBD #3-28
Job Ticket: 49075 **DST#: 2**
Test Start: 2013.11.01 @ 11:26:00

Mud and Cushion Information

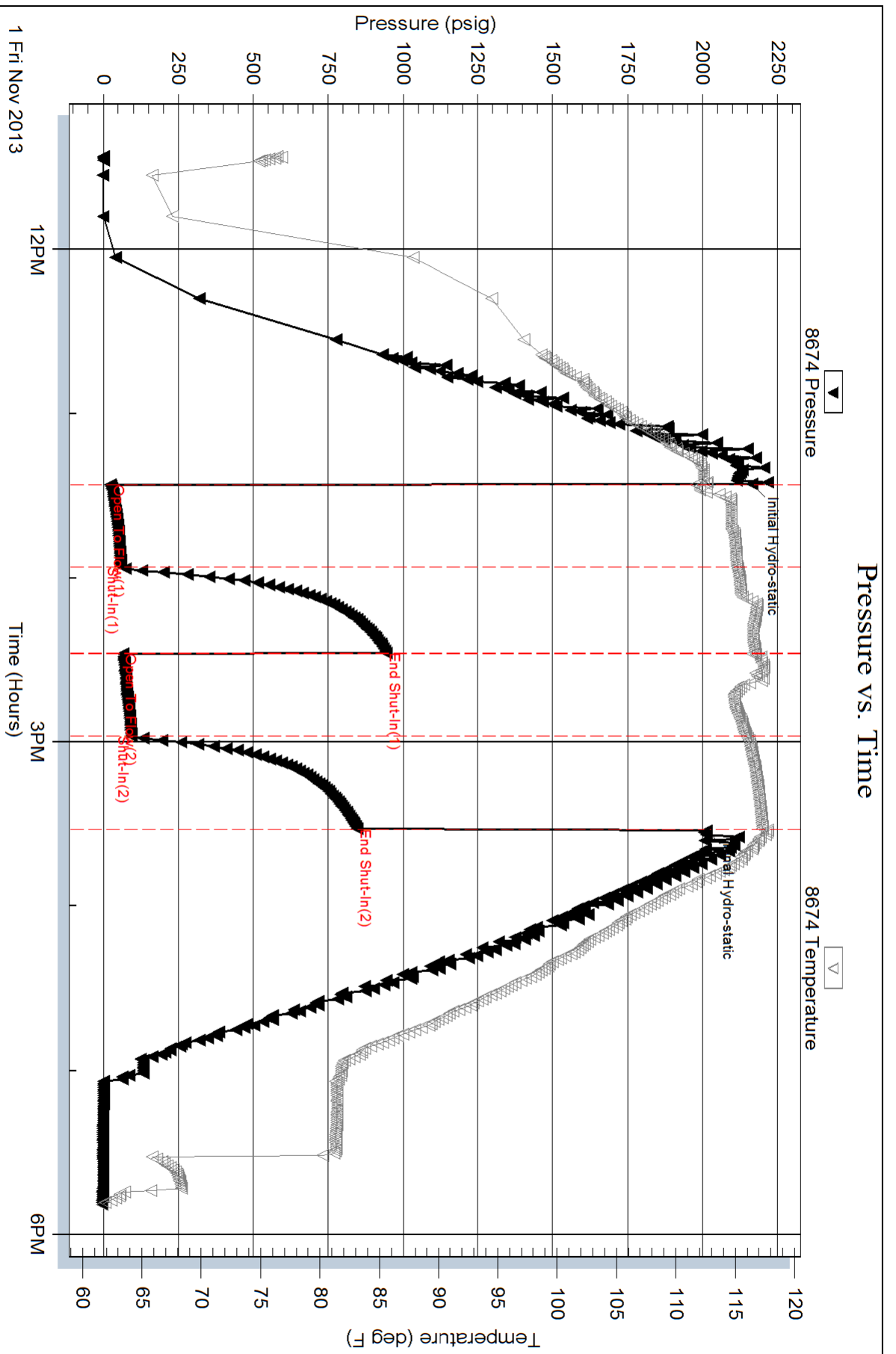
Mud Type: Gel Chem	Cushion Type:	Oil API:	deg API
Mud Weight: 10.00 lb/gal	Cushion Length: ft	Water Salinity:	ppm
Viscosity: 60.00 sec/qt	Cushion Volume: bbl		
Water Loss: 7.18 in ³	Gas Cushion Type:		
Resistivity: ohm.m	Gas Cushion Pressure: psig		
Salinity: 2900.00 ppm			
Filter Cake: 1.00 inches			

Recovery Information

Recovery Table

Length ft	Description	Volume bbl
62.00	WOCM 2%w 4%oil 94%m	0.305
64.00	OCM 7%oil 93%m	0.315

Total Length: 126.00 ft Total Volume: 0.620 bbl
Num Fluid Samples: 0 Num Gas Bombs: 0 Serial #:
Laboratory Name: Laboratory Location:
Recovery Comments:

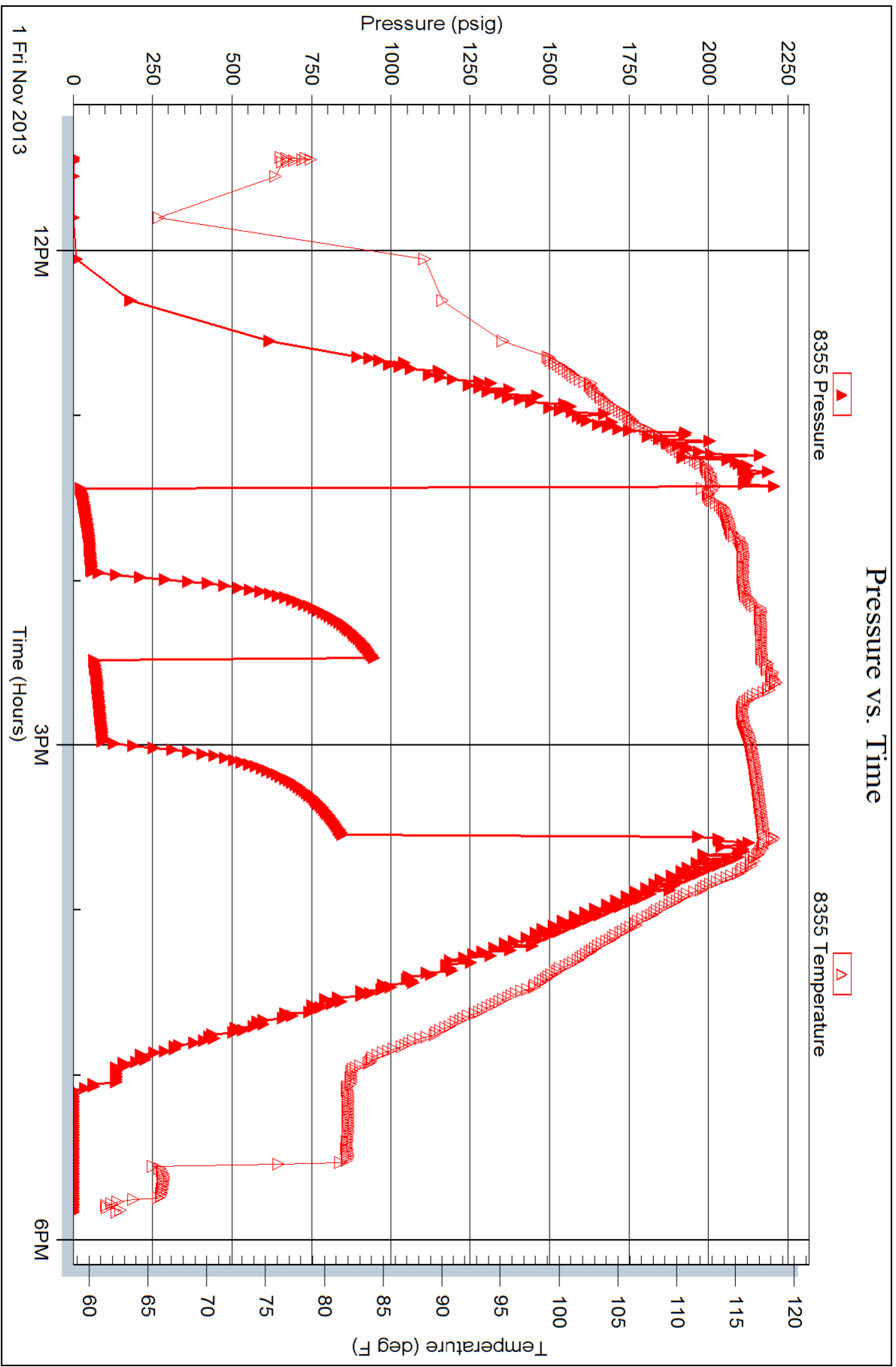


Serial #: 8355

Outside American Warrior Inc

DBD#3-28

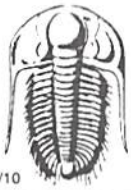
DST Test Number: 2



Triobite Testing, Inc

Ref. No: 49075

Printed: 2013.11.06 @ 09:58:22



TRILOBITE TESTING INC.

P.O. Box 1733 • Hays, Kansas 67601

Test Ticket

NO. 49074

Well Name & No. American Warrior Inc DBD#3-28 Test No. DST #1 Date 10-31-13
 Company American Warrior Inc Elevation 2438 KB 2428 GL
 Address P.O. Box 399 Garden City KS 67846
 Co. Rep / Geo. Kevin Timson Rig Duke 5
 Location: Sec. 28 Twp. 18S Rge. 25W Co. Ness State KS

Interval Tested 4280-4340 Zone Tested Ft. Scott
 Anchor Length 60 Drill Pipe Run 3984 Mud Wt. 9.4
 Top Packer Depth 4276 Drill Collars Run 277 Vis 52
 Bottom Packer Depth 4280 Wt. Pipe Run 0 WL 6.8
 Total Depth 4340 Chlorides 2800 ppm System LCM 216
 Blow Description IF - Weak Surface Blow Built to BOB in 9³⁴min
ISI - Weak Surface Blow in 5min
FF - Weak Surface Blow Built to BOB in 11min
FSI - Weak Surface Blow in 1¹⁴min Built to 1³⁴"

Rec	Feet of	%gas	%oil	%water	%mud
<u>109</u>	<u>WG-MCO</u>	<u>6</u>	<u>50</u>	<u>4</u>	<u>40</u>
<u>62</u>	<u>OW-GCM</u>	<u>27</u>	<u>18</u>	<u>20</u>	<u>35</u>
<u>62</u>	<u>OG-MCW</u>	<u>16</u>	<u>4</u>	<u>43</u>	<u>37</u>
<u>124</u>	<u>GMCW with SK at oil on top</u>	<u>7</u>	<u>%oil</u>	<u>71</u>	<u>21</u>
<u>124</u>	<u>GMCW</u>	<u>5</u>	<u>%oil</u>	<u>86</u>	<u>9</u>

Rec Total 481 BHT 122 Gravity _____ API RW .131 @ 59 °F Chlorides 67000 ppm

(A) Initial Hydrostatic 2117 Test 1250 T-On Location 12:00
 (B) First Initial Flow 32 Jars 250 T-Started 13:48
 (C) First Final Flow 145 Safety Joint 75 T-Open 15:48
 (D) Initial Shut-In 1111 Circ Sub N/C T-Pulled 18:51
 (E) Second Initial Flow 154 Hourly Standby _____ T-Out 21:56

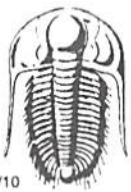
(F) Second Final Flow 225 Mileage 88 R/T 136.40
 (G) Final Shut-In 1090 Sampler _____
 (H) Final Hydrostatic 2064 Straddle _____
 Shale Packer _____
 Extra Packer _____
 Extra Recorder _____
 Day Standby _____
 Accessibility _____

Sub Total 1711.40

Comments 1069' of G-IP
 Ruined Shale Packer _____
 Ruined Packer _____
 Extra Copies _____
 Sub Total 0
 Total 1711.40
 MP/DST Disc't _____

Approved By _____ Our Representative Will Mast

Trilobite Testing Inc. shall not be liable for damaged of any kind of the property or personnel of the one for whom a test is made, or for any loss suffered or sustained, directly or indirectly, through the use of its equipment, or its statements or opinion concerning the results of any test, tools lost or damaged in the hole shall be paid for at cost by the party for whom the test is made.



TRILOBITE TESTING INC.

P.O. Box 1733 • Hays, Kansas 67601

Test Ticket

NO. 49075

Well Name & No. DBD #3-28 Test No. DST #2 Date 11-1-13
 Company American Warrior Inc Elevation 2438 KB 2424 GL
 Address P.O. Box 399 Garden City KS 67846
 Co. Rep / Geo. Kevin Timson Rig Duke 5
 Location: Sec. 28 Twp. 18S Rge. 25W Co. Ness State KS

Interval Tested 4346-4420 Zone Tested Mississippi
 Anchor Length 74 Drill Pipe Run 4048 Mud Wt. 9.5
 Top Packer Depth 4342 Drill Collars Run 277 Vis 60
 Bottom Packer Depth 4346 Wt. Pipe Run 0 WL 7.2
 Total Depth 4420 Chlorides 2900 ppm System LCM 216
 Blow Description IF- Weak Surface Blow Built to 3 1/4"
ISI- No Blow
FF- Weak Surface Blow Built to 3 1/4"
FST- No Blow

Rec	Feet of	%gas	%oil	%water	%mud
<u>64</u>	<u>OCM</u>	<u>7</u>	<u>7</u>	<u>93</u>	<u>93</u>
<u>62</u>	<u>WOCM</u>	<u>4</u>	<u>4</u>	<u>2</u>	<u>94</u>
Rec	Feet of	%gas	%oil	%water	%mud
Rec	Feet of	%gas	%oil	%water	%mud
Rec	Feet of	%gas	%oil	%water	%mud

Rec Total 126 BHT 118 Gravity _____ API RW _____ @ _____ °F Chlorides _____ ppm

(A) Initial Hydrostatic 2163 Test 1250 T-On Location 10:34
 (B) First Initial Flow 23 Jars 250 T-Started 11:26
 (C) First Final Flow 59 Safety Joint 75 T-Open 13:25
 (D) Initial Shut-In 944 Circ Sub NIC T-Pulled 15:32
 (E) Second Initial Flow 65 Hourly Standby _____ T-Out 17:48
 (F) Second Final Flow 93 Mileage 88 RIT 136.40 Comments _____
 (G) Final Shut-In 847 Sampler _____
 (H) Final Hydrostatic 2014 Straddle _____
 Shale Packer _____
 Extra Packer _____
 Extra Recorder _____
 Day Standby _____
 Accessibility _____

Initial Open 30
 Initial Shut-In 30
 Final Flow 30
 Final Shut-In 30

Sub Total 1711.40
 Total 1711.40
 MP/DST Disc't _____

Approved By _____ Our Representative Kevin M

Trilobite Testing Inc. shall not be liable for damaged of any kind of the property or personnel of the one for whom a test is made, or for any loss suffered or sustained, directly or indirectly, through the use of its equipment, or its statements or opinion concerning the results of any test, tools lost or damaged in the hole shall be paid for at cost by the party for whom the test is made.