



## DRILL STEM TEST REPORT

Prepared For: **RJM Company**

Po Box 256 Claflin Kansas  
67525

ATTN: Wyatt

**Schneider Farm**

**7-17s-14w- Barton**

Start Date: 2014.01.04 @ 09:30:00

End Date: 2014.01.04 @ 15:44:00

Job Ticket #: 19162                      DST #: 1

Superior Testers Enterprises LLC  
PO Box 138 Great Bend KS 67530  
1-800-792-6902

Printed: 2014.01.04 @ 01:59:37



# DRILL STEM TEST REPORT

RJM Company  
 Po Box 256 Claflin Kansas  
 67525  
 ATTN: Wyatt

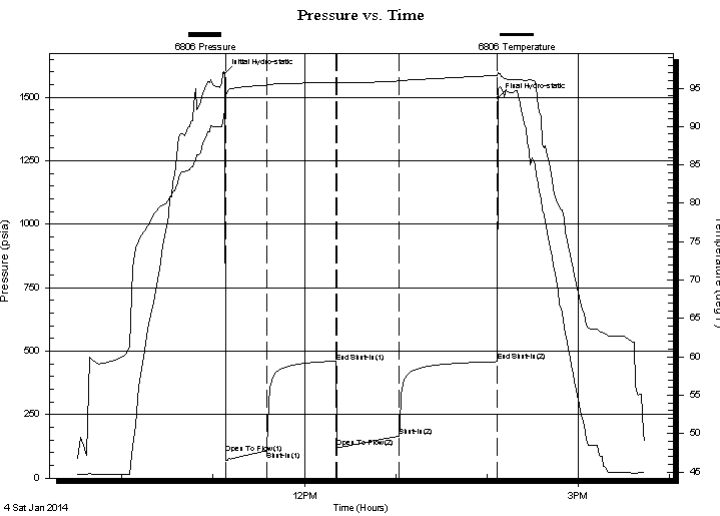
**7-17s-14w- Barton**  
**Schneider Farm**  
 Job Ticket: 19162 **DST#: 1**  
 Test Start: 2014.01.04 @ 09:30:00

## GENERAL INFORMATION:

Formation: **Lansing A-C**  
 Deviated: No Whipstock: ft (KB)  
 Time Tool Opened: 11:08:00  
 Time Test Ended: 15:44:00  
 Interval: **3196.00 ft (KB) To 3230.00 ft (KB) (TVD)**  
 Total Depth: 3230.00 ft (KB) (TVD)  
 Hole Diameter: 7.88 inches Hole Condition: Fair  
 Test Type: Conventional Bottom Hole (Initial)  
 Tester: Dustin Ellis  
 Unit No: 3315-Great Bend-45  
 Reference Elevations: 1947.00 ft (KB)  
 1938.00 ft (CF)  
 KB to GR/CF: 9.00 ft

**Serial #: 6806 Inside**  
 Press @ RunDepth: 165.14 psia @ 3226.00 ft (KB) Capacity: 5000.00 psia  
 Start Date: 2014.01.04 End Date: 2014.01.04 Last Calib.: 2014.01.04  
 Start Time: 09:30:00 End Time: 15:44:00 Time On Btm: 2014.01.04 @ 11:07:30  
 Time Off Btm: 2014.01.04 @ 14:07:00

**TEST COMMENT:** 1st Open 30 minutes Good building blow built to bottom bucket in 23 minutes.  
 1st Shut in 45 minutes No blow back  
 2nd Open 45 minutes Good building blow built to bottom bucket in 23 minutes.  
 2nd Shut in 60 minutes No blow back



## PRESSURE SUMMARY

Time (Min.)	Pressure (psia)	Temp (deg F)	Annotation
0	1594.82	92.13	Initial Hydro-static
1	98.86	92.06	Open To Flow (1)
28	107.44	95.40	Shut-In(1)
74	458.73	95.73	End Shut-In(1)
74	120.44	95.67	Open To Flow (2)
115	165.14	95.93	Shut-In(2)
179	458.88	96.67	End Shut-In(2)
180	1496.78	97.05	Final Hydro-static

## Recovery

Length (ft)	Description	Volume (bbl)
225.00	Water 100%	3.16
0.00	Chlorides 23,000	0.00

## Gas Rates

	Choke (inches)	Pressure (psia)	Gas Rate (Mcf/d)



# DRILL STEM TEST REPORT

RJM Company  
 Po Box 256 Claflin Kansas  
 67525  
 ATTN: Wyatt

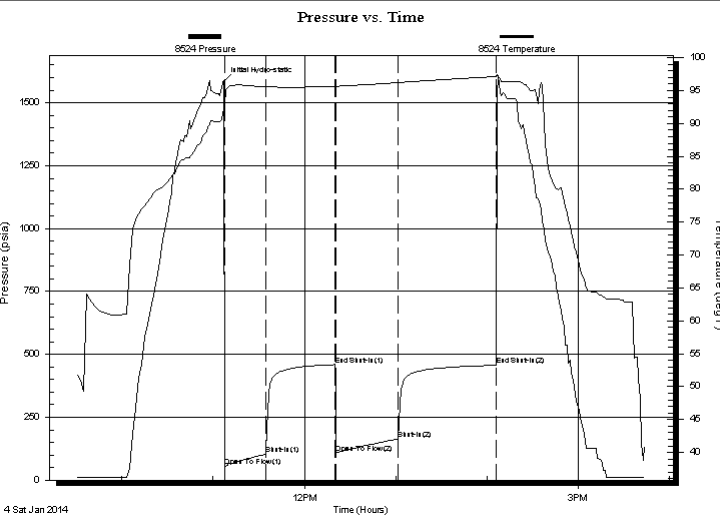
**7-17s-14w- Barton**  
**Schneider Farm**  
 Job Ticket: 19162 **DST#: 1**  
 Test Start: 2014.01.04 @ 09:30:00

## GENERAL INFORMATION:

Formation: **Lansing A-C**  
 Deviated: No Whipstock: ft (KB)  
 Time Tool Opened: 11:08:00  
 Time Test Ended: 15:44:00  
 Interval: **3196.00 ft (KB) To 3230.00 ft (KB) (TVD)**  
 Total Depth: 3230.00 ft (KB) (TVD)  
 Hole Diameter: 7.88 inches Hole Condition: Fair  
 Test Type: Conventional Bottom Hole (Initial)  
 Tester: Dustin Ellis  
 Unit No: 3315-Great Bend-45  
 Reference Elevations: 1947.00 ft (KB)  
 1938.00 ft (CF)  
 KB to GR/CF: 9.00 ft

**Serial #: 8524 Outside**  
 Press @ RunDepth: 456.37 psia @ 3227.00 ft (KB) Capacity: 5000.00 psia  
 Start Date: 2014.01.04 End Date: 2014.01.04 Last Calib.: 2014.01.04  
 Start Time: 09:30:00 End Time: 15:43:30 Time On Btm: 2014.01.04 @ 11:07:00  
 Time Off Btm:

**TEST COMMENT:** 1st Open 30 minutes Good building blow built to bottom bucket in 23 minutes.  
 1st Shut in 45 minutes No blow back  
 2nd Open 45 minutes Good building blow built to bottom bucket in 23 minutes.  
 2nd Shut in 60 minutes No blow back



## PRESSURE SUMMARY

Time (Min.)	Pressure (psia)	Temp (deg F)	Annotation
0	1582.93	92.25	Initial Hydro-static
1	54.25	92.68	Open To Flow (1)
28	103.11	95.57	Shut-In(1)
73	459.22	95.67	End Shut-In(1)
74	108.43	95.69	Open To Flow (2)
115	162.74	96.20	Shut-In(2)
179	456.37	97.13	End Shut-In(2)

## Recovery

Length (ft)	Description	Volume (bbl)
225.00	Water 100%	3.16
0.00	Chlorides 23,000	0.00

## Gas Rates

Choke (inches)	Pressure (psia)	Gas Rate (Mcf/d)



# DRILL STEM TEST REPORT

TOOL DIAGRAM

RJM Company  
 Po Box 256 Claflin Kansas  
 67525  
 ATTN: Wyatt

**7-17s-14w- Barton**  
**Schneider Farm**  
 Job Ticket: 19162      **DST#: 1**  
 Test Start: 2014.01.04 @ 09:30:00

## Tool Information

Drill Pipe:	Length: 3174.00 ft	Diameter: 3.80 inches	Volume: 44.52 bbl	Tool Weight: 2000.00 lb
Heavy Wt. Pipe:	Length: 0.00 ft	Diameter: 0.00 inches	Volume: 0.00 bbl	Weight set on Packer: 20000.00 lb
Drill Collar:	Length: 0.00 ft	Diameter: 0.00 inches	Volume: 0.00 bbl	Weight to Pull Loose: 65000.00 lb
			<u>Total Volume: 44.52 bbl</u>	Tool Chased 4.00 ft
Drill Pipe Above KB:	6.00 ft			String Weight: Initial 48000.00 lb
Depth to Top Packer:	3196.00 ft			Final 50000.00 lb
Depth to Bottom Packer:	ft			
Interval between Packers:	34.00 ft			
Tool Length:	62.00 ft			
Number of Packers:	2	Diameter: 6.75 inches		

Tool Comments:

Tool Description	Length (ft)	Serial No.	Position	Depth (ft)	Accum. Lengths
Shut-In Tool	5.00			3173.00	
Hydraulic Tool	5.00			3178.00	
Jars	6.00			3184.00	
Safety Joint	2.00			3186.00	
Packer	5.00			3191.00	28.00      Bottom Of Top Packer
Packer	5.00			3196.00	
Anchor	29.00			3225.00	
Recorder	1.00	6806	Inside	3226.00	
Recorder	1.00	8524	Outside	3227.00	
Bull Plug	3.00			3230.00	34.00      Bottom Packers & Anchor
<b>Total Tool Length:</b>	<b>62.00</b>				



# DRILL STEM TEST REPORT

## FLUID SUMMARY

RJM Company  
 Po Box 256 Claflin Kansas  
 67525  
 ATTN: Wyatt

**7-17s-14w- Barton**  
**Schneider Farm**  
 Job Ticket: 19162      **DST#: 1**  
 Test Start: 2014.01.04 @ 09:30:00

### Mud and Cushion Information

Mud Type: Gel Chem	Cushion Type:	Oil API:	deg API
Mud Weight: 9.00 lb/gal	Cushion Length: ft	Water Salinity:	ppm
Viscosity: 46.00 sec/qt	Cushion Volume: bbl		
Water Loss: 8.00 in <sup>3</sup>	Gas Cushion Type:		
Resistivity: ohm.m	Gas Cushion Pressure: psia		
Salinity: 5000.00 ppm			
Filter Cake: 1.00 inches			

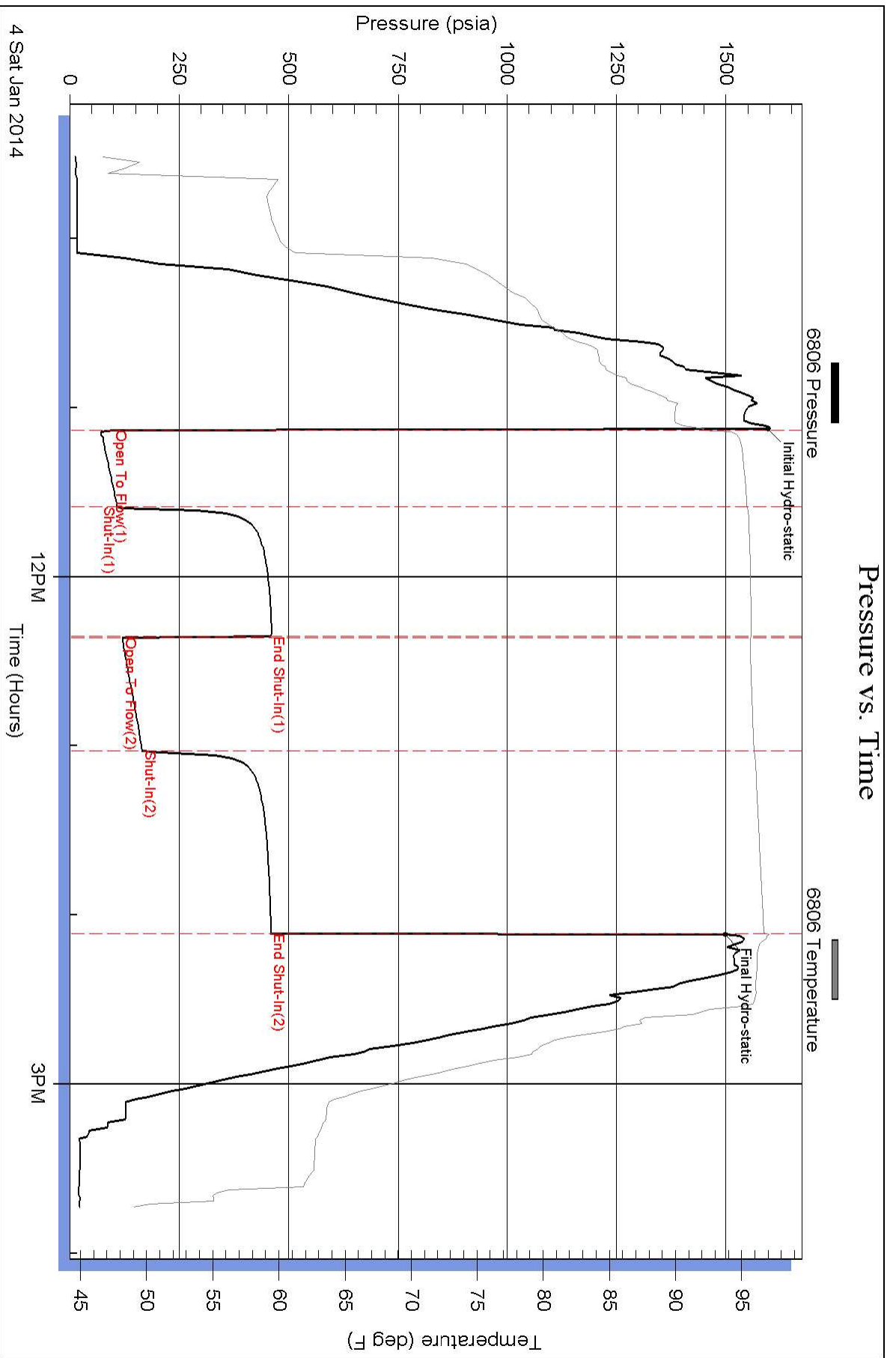
### Recovery Information

Recovery Table

Length ft	Description	Volume bbl
225.00	Water 100%	3.156
0.00	Chlorides 23,000	0.000

Total Length: 225.00 ft      Total Volume: 3.156 bbl  
 Num Fluid Samples: 0      Num Gas Bombs: 0      Serial #:  
 Laboratory Name:      Laboratory Location:  
 Recovery Comments:

# Pressure vs. Time



### Pressure vs. Time

