

**Scale 1:240 (5"=100') Imperial**  
**Measured Depth Log**

Well Name: Doornbos #2-15  
Location: 754FNL, 520Y FEL  
License Number: API: 15-109-21177  
Spud Date: 12-10-13  
Surface Coordinates: Lat: 38.6882145 Long: -100.9458954  
Bottom Hole Coordinates: Vertical hole

15-1668-33W, Scott County, Kansas  
Region:  
Drilling Completed: 12-20-13

Ground Elevation (ft): 3027' K.B. Elevation (ft): 3038'  
Logged Interval (ft): 3500 To: RTD Total Depth (ft): 4836  
Formation: Mississippian at RTD  
Type of Drilling Fluid: Chemical

Printed by MUD.LOG from WellSight Systems 1-800-447-1534 www.WellSight.com

**GEOLOGIST**

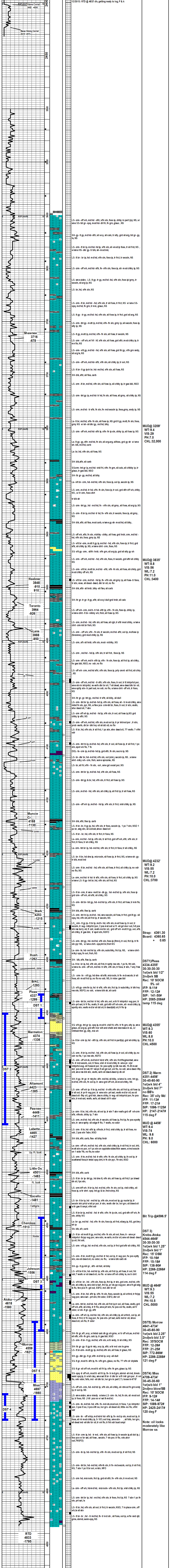
Name: Bob Schreiber  
Company: Independent  
Address: 268 NE 220 Rd  
Holsington, KS 67544  
620-653-7691

**COMMENTS**

Contractor: Duke Rig #4  
Pusher: Rich Wheeler  
Surface Casing: 8 5/8" set at 216' w/165sx  
Production Casing: none,  
Mud by: MudCo  
DST's by: Diamond Testing  
Logs by: Weatherford (DL, CN-CD, ML)  
RTD=4833'  
LTD=4836'

**FORMATION TOPS**

FORMATION	SAMPLE TOPS		LOG TOPS	
	Depth	Datum	Depth	Datum
Stone Corral	2402'	+636	2403'	+633
B/Stone Corral	2423'	+615	2422'	+614
Heebner Shale	3948'	-910	3949'	-911
Leaning	3988'	-950	3990'	-952
Muncie Creek Shale	4168'	-1130	4169'	-1131
Stark Shale	4253'	-1215	4254'	-1216
Hushpuckney Shale	4300'	-1262	4302'	-1264
Pleasanton	4337'	-1299	4338'	-1300
Altamont	4423'	-1385'	4424'	-1386
Little Osage Shale	4501'	-1463'	4503'	-1465
Excello Zone	4519'	-1481	4520'	-1482
Morrow	4493'	-1556	4595'	-1557
Mississippian	4659'	-1621	4761'	-1623
RTD	4697'	-1660	4600'	-1662
LTD	4833'	-1795	4836'	-1798



MUD@ 3209'  
WT:8.8  
VIS:29  
PH:7.0  
CHL:32,000

MUD@ 3835'  
WT:8.6  
VIS:56  
PH:11.0  
CHL:3400

MUD@ 4232'  
WT:9.3  
VIS:5.5  
PH:10.0  
CHL:3700

MUD@ 4355'  
WT:9.3  
VIS:8.8  
PH:10.0  
CHL:4500

MUD@ 4649'  
WT:9.4  
VIS:7.4  
PH:9.6  
CHL: 6000

MUD@ 4836'  
WT:9.4  
VIS:7.4  
PH:9.6  
CHL: 6000

MUD@ 4836'  
WT:9.4  
VIS:7.4  
PH:9.6  
CHL: 6000

MUD@ 4836'  
WT:9.4  
VIS:7.4  
PH:9.6  
CHL: 6000

MUD@ 4836'  
WT:9.4  
VIS:7.4  
PH:9.6  
CHL: 6000

MUD@ 4836'  
WT:9.4  
VIS:7.4  
PH:9.6  
CHL: 6000

MUD@ 4836'  
WT:9.4  
VIS:7.4  
PH:9.6  
CHL: 6000

MUD@ 4836'  
WT:9.4  
VIS:7.4  
PH:9.6  
CHL: 6000

MUD@ 4836'  
WT:9.4  
VIS:7.4  
PH:9.6  
CHL: 6000

MUD@ 4836'  
WT:9.4  
VIS:7.4  
PH:9.6  
CHL: 6000

MUD@ 4836'  
WT:9.4  
VIS:7.4  
PH:9.6  
CHL: 6000

MUD@ 4836'  
WT:9.4  
VIS:7.4  
PH:9.6  
CHL: 6000

MUD@ 4836'  
WT:9.4  
VIS:7.4  
PH:9.6  
CHL: 6000

MUD@ 4836'  
WT:9.4  
VIS:7.4  
PH:9.6  
CHL: 6000

MUD@ 4836'  
WT:9.4  
VIS:7.4  
PH:9.6  
CHL: 6000

MUD@ 4836'  
WT:9.4  
VIS:7.4  
PH:9.6  
CHL: 6000

MUD@ 4836'  
WT:9.4  
VIS:7.4  
PH:9.6  
CHL: 6000

MUD@ 4836'  
WT:9.4  
VIS:7.4  
PH:9.6  
CHL: 6000

MUD@ 4836'  
WT:9.4  
VIS:7.4  
PH:9.6  
CHL: 6000

MUD@ 4836'  
WT:9.4  
VIS:7.4  
PH:9.6  
CHL: 6000

MUD@ 4836'  
WT:9.4  
VIS:7.4  
PH:9.6  
CHL: 6000

MUD@ 4836'  
WT:9.4  
VIS:7.4  
PH:9.6  
CHL: 6000

MUD@ 4836'  
WT:9.4  
VIS:7.4  
PH:9.6  
CHL: 6000

MUD@ 4836'  
WT:9.4  
VIS:7.4  
PH:9.6  
CHL: 6000

MUD@ 4836'  
WT:9.4  
VIS:7.4  
PH:9.6  
CHL: 6000

MUD@ 4836'  
WT:9.4  
VIS:7.4  
PH:9.6  
CHL: 6000

MUD@ 4836'  
WT:9.4  
VIS:7.4  
PH:9.6  
CHL: 6000

MUD@ 4836'  
WT:9.4  
VIS:7.4  
PH:9.6  
CHL: 6000

MUD@ 4836'  
WT:9.4  
VIS:7.4  
PH:9.6  
CHL: 6000

MUD@ 4836'  
WT:9.4  
VIS:7.4  
PH:9.6  
CHL: 6000

MUD@ 4836'  
WT:9.4  
VIS:7.4  
PH:9.6  
CHL: 6000

MUD@ 4836'  
WT:9.4  
VIS:7.4  
PH:9.6  
CHL: 6000

MUD@ 4836'  
WT:9.4  
VIS:7.4  
PH:9.6  
CHL: 6000

MUD@ 4836'  
WT:9.4  
VIS:7.4  
PH:9.6  
CHL: 6000

MUD@ 4836'  
WT:9.4  
VIS:7.4  
PH:9.6  
CHL: 6000

MUD@ 4836'  
WT:9.4  
VIS:7.4  
PH:9.6  
CHL: 6000

MUD@ 4836'  
WT:9.4  
VIS:7.4  
PH:9.6  
CHL: 6000

MUD@ 4836'  
WT:9.4  
VIS:7.4  
PH:9.6  
CHL: 6000

MUD@ 4836'  
WT:9.4  
VIS:7.4  
PH:9.6  
CHL: 6000

MUD@ 4836'  
WT:9.4  
VIS:7.4  
PH:9.6  
CHL: 6000

MUD@ 4836'  
WT:9.4  
VIS:7.4  
PH:9.6  
CHL: 6000

MUD@ 4836'  
WT:9.4  
VIS:7.4  
PH:9.6  
CHL: 6000

MUD@ 4836'  
WT:9.4  
VIS:7.4  
PH:9.6  
CHL: 6000

MUD@ 4836'  
WT:9.4  
VIS:7.4  
PH:9.6  
CHL: 6000

MUD@ 4836'  
WT:9.4  
VIS:7.4  
PH:9.6  
CHL: 6000

MUD@ 4836'  
WT:9.4  
VIS:7.4  
PH:9.6  
CHL: 6000

MUD@ 4836'  
WT:9.4  
VIS:7.4  
PH:9.6  
CHL: 6000

MUD@ 4836'  
WT:9.4  
VIS:7.4  
PH:9.6  
CHL: 6000

MUD@ 4836'  
WT:9.4  
VIS:7.4  
PH:9.6  
CHL: 6000

MUD@ 4836'  
WT:9.4  
VIS:7.4  
PH:9.6  
CHL: 6000

MUD@ 4836'  
WT:9.4  
VIS:7.4  
PH:9.6  
CHL: 6000

MUD@ 4836'  
WT:9.4  
VIS:7.4  
PH:9.6  
CHL: 6000

MUD@ 4836'  
WT:9.4  
VIS:7.4  
PH:9.6  
CHL: 6000

MUD@ 4836'  
WT:9.4  
VIS:7.4  
PH:9.6  
CHL: 6000

MUD@ 4836'  
WT:9.4  
VIS:7.4  
PH:9.6  
CHL: 6000

MUD@ 4836'  
WT:9.4  
VIS:7.4  
PH:9.6  
CHL: 6000

MUD@ 4836'  
WT:9.4  
VIS:7.4  
PH:9.6  
CHL: 6000

MUD@ 4836'  
WT:9.4  
VIS:7.4  
PH:9.6  
CHL: 6000

MUD@ 4836'  
WT:9.4  
VIS:7.4  
PH:9.6  
CHL: 6000

MUD@ 4836'  
WT:9.4  
VIS:7.4  
PH:9.6  
CHL: 6000

MUD@ 4836'  
WT:9.4  
VIS:7.4  
PH:9.6  
CHL: 6000

MUD@ 4836'  
WT:9.4  
VIS:7.4  
PH:9.6  
CHL: 6000

MUD@ 4836'  
WT:9.4  
VIS:7.4  
PH:9.6  
CHL: 6000

MUD@ 4836'  
WT:9.4  
VIS:7.4  
PH:9.6  
CHL: 6000

MUD@ 4836'  
WT:9.4  
VIS:7.4  
PH:9.6  
CHL: 6000

MUD@ 4836'  
WT:9.4  
VIS:7.4  
PH:9.6  
CHL: 6000

MUD@ 4836'  
WT:9.4  
VIS:7.4  
PH:9.6  
CHL: 6000

MUD@ 4836'  
WT:9.4  
VIS:7.4  
PH:9.6  
CHL: 6000

MUD@ 4836'  
WT:9.4  
VIS:7.4  
PH:9.6  
CHL: 6000

MUD@ 4836'  
WT:9.4  
VIS:7.4  
PH:9.6  
CHL: 6000

MUD@ 4836'  
WT:9.4  
VIS:7.4  
PH:9.6  
CHL: 6000

MUD@ 4836'  
WT:9.4  
VIS:7.4  
PH:9.6  
CHL: 6000

MUD@ 4836'  
WT:9.4  
VIS:7.4  
PH:9.6  
CHL: 6000

MUD@ 4836'  
WT:9.4  
VIS:7.4  
PH:9.6  
CHL: 6000

MUD@ 4836'  
WT:9.4  
VIS:7.4  
PH:9.6  
CHL: 6000

MUD@ 4836'  
WT:9.4  
VIS:7.4  
PH:9.6  
CHL: 6000

MUD@ 4836'  
WT:9.4  
VIS:7.4  
PH:9.6  
CHL: 6000

MUD@ 4836'  
WT:9.4  
VIS:7.4  
PH:9.6  
CHL: 6000

MUD@ 4836'  
WT:9.4  
VIS:7.4  
PH:9.6  
CHL: 6000

MUD@ 4836'  
WT:9.4  
VIS:7.4  
PH:9.6  
CHL: 6000

MUD@ 4836'  
WT:9.4  
VIS:7.4  
PH:9.6  
CHL: 6000

MUD@ 4836'  
WT:9.4  
VIS:7.4  
PH:9.6  
CHL: 6000

MUD@ 4836'  
WT:9.4  
VIS:7.4  
PH:9.6  
CHL: 6000

MUD@ 4836'  
WT:9.4  
VIS:7.4  
PH:9.6  
CHL: 6000

MUD@ 4836'  
WT:9.4  
VIS:7.4  
PH:9.6  
CHL: 6000

MUD@ 4836'  
WT:9.4  
VIS:7.4  
PH:9.6  
CHL: 6000

MUD@ 4836'  
WT:9.4  
VIS:7.4  
PH:9.6  
CHL: 6000

MUD@ 4836'  
WT:9.4  
VIS:7.4  
PH:9.6  
CHL: 6000

MUD@ 4836'  
WT:9.4  
VIS:7.4  
PH:9.6  
CHL: 6000

MUD@ 4836'  
WT:9.4  
VIS:7.4  
PH:9.6  
CHL: 6000

MUD@ 4836'  
WT:9.4  
VIS:7.4  
PH:9.6  
CHL: 6000

MUD@ 4836'  
WT:9.4  
VIS:7.4  
PH:9.6  
CHL: 6000

MUD@ 4836'  
WT:9.4  
VIS:7.4  
PH:9.6  
CHL: 6000

MUD@ 4836'  
WT:9.4  
VIS:7.4  
PH:9.6  
CHL: 6000

MUD@ 4836'  
WT:9.4  
VIS:7.4  
PH:9.6  
CHL: 6000

MUD@ 4836'  
WT:9.4  
VIS:7.4  
PH:9.6  
CHL: 6000

MUD@ 4836'  
WT:9.4  
VIS:7.4  
PH:9.6  
CHL: 6000

MUD@ 4836'  
WT:9.4  
VIS:7.4  
PH:9.6  
CHL: 6000

MUD@ 4836'  
WT:9.4  
VIS:7.4  
PH:9.6  
CHL: 6000

MUD@ 4836'  
WT:9.4  
VIS:7.4  
PH:9.6  
CHL: 6000

MUD@ 4836'  
WT:9.4  
VIS:7.4  
PH:9.6  
CHL: 6000

MUD@ 4836'  
WT:9.4  
VIS:7.4  
PH:9.6  
CHL: 6000

MUD@ 4836'  
WT:9.4  
VIS:7.4  
PH:9.6  
CHL: 6000

MUD@ 4836'  
WT:9.4  
VIS:7.4  
PH:9.6  
CHL: 6000

MUD@ 4836'  
WT:9.4  
VIS:7.4  
PH:9.6  
CHL: 6000

MUD@ 4836'  
WT:9.4  
VIS:7.4  
PH:9.6  
CHL: 6000

MUD@ 4836'  
WT:9.4  
VIS:7.4  
PH:9.6  
CHL: 6000

MUD@ 4836'  
WT:9.4  
VIS:7.4  
PH:9.6  
CHL: 6000

MUD@ 4836'  
WT:9.4  
VIS:7.4  
PH:9.6  
CHL: 6000

MUD@ 4836'  
WT:9.4  
VIS:7.4  
PH:9.6  
CHL: 6000

MUD@ 4836'  
WT:9.4  
VIS:7.4  
PH:9.6  
CHL: 6000

MUD@ 4836'  
WT:9.4  
VIS:7.4  
PH:9.6  
CHL: 6000

MUD@ 4836'  
WT:9.4  
VIS:7.4  
PH:9.6  
CHL: 6000

MUD@ 4836'  
WT:9.4  
VIS:7.4  
PH:9.6  
CHL: 6000

MUD@ 4836'  
WT:9.4  
VIS:7.4  
PH:9.6  
CHL: 6000

MUD@ 4836'  
WT:9.4  
VIS:7.4  
PH:9.6  
CHL: 6000

MUD@ 4836'  
WT:9.4  
VIS:7.4  
PH:9.6  
CHL: 6000

MUD@ 4836'  
WT:9.4  
VIS:7.4  
PH:9.6  
CHL: 6000

MUD@ 4836'  
WT:9.4  
VIS:7.4  
PH:9.6  
CHL: 6000

MUD@ 4836'  
WT:9.4  
VIS:7.4  
PH:9.6  
CHL: 6000

MUD@ 4836'  
WT:9.4  
VIS:7.4  
PH:9.6  
CHL: 6000

MUD@ 4836'  
WT:9.4  
VIS:7.4  
PH:9.6  
CHL: 6000

MUD@ 4836'  
WT:9.4  
VIS:7.4  
PH:9.6  
CHL: 6000

MUD@ 4836'  
WT:9.4  
VIS:7.4  
PH:9.6  
CHL: 6000

MUD@ 4836'  
WT:9.4  
VIS:7.4  
PH:9.6  
CHL: 6000

MUD@ 4836'  
WT:9.4  
VIS:7.4  
PH:9.6  
CHL: 6000

MUD@ 4836'  
WT:9.4  
VIS:7.4  
PH:9.6