

34-31-6E

KANSAS

State Geological Survey

WELL COMPLETION REPORT AND
DRILLER'S LOG

WICHITA BRANCH

API No. 15 — 035 —
County Number

S. 34 T. 31 R. 6E E
SW SE SE W

Loc. _____

County Cowley

Operator
DuPont Oil Co.

Address
660 Edgewater Road, Wichita, Kansas 67230

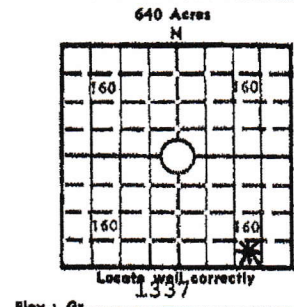
Well No. 2 Lease Name Gatton

Footage Location 330 feet from (N) (S) line 990 feet from (E) (W) line

Principal Contractor Edco Drilling Co. Geologist Mervyn Mace

Spud Date 6-17-80 Date Completed 6-23-80 Total Depth 2615 P.B.T.D.

Directional Deviation Oil and/or Gas Purchaser Clear Creek-Oil, Cities Service



CASING RECORD

Report of all strings set— surface, intermediate, production, etc.

Purpose of string	Size hole drilled	Size casing set (in O.D.)	Weight lbs./ft.	Setting depth	Type cement	Secks	Type and percent additives
Surface	12 1/2	8 5/8		200			
Production	7 7/8	4 1/2		2615			

LINER RECORD

PERFORATION RECORD

Top, ft.	Bottom, ft.	Secks cement	Shots per ft.	Size & type	Depth interval
			2		2520-50

Size	Setting depth	Pecker set at

ACID, FRACTURE, SHOT, CEMENT SQUEEZE RECORD

Amount and kind of material used	Depth interval treated
250 GA. Frac'd w/1000 BW + Sand	2520-50

INITIAL PRODUCTION

Date of first production	Producing method (flowing, pumping, gas lift, etc.) Pumping
RATE OF PRODUCTION PER 24 HOURS	Oil 25 bbls. Gas 14.5 MCF Water 100 bbls. Gas-oil ratio 580 GPPD
Disposition of gas (vented, used on lease or sold) Vented at first. New sold to Cities Service Gas	Producing interval (s) 2520-50

INSTRUCTIONS: As provided in KCC Rule 82-2-125, within 90 days after completion of a well, one completed copy of this Driller's Log shall be transmitted to the State Geological Survey of Kansas, 4150 Monroe Street, Wichita, Kansas 67209. Copies of this form are available from the Conservation Division, State Corporation Commission, 245 No. Water, Wichita, Kansas 67202. Phone AC 316-522-2206. If confidential custody is desired, please note Rule 82-2-125. Driller's Logs will be an open file in the Oil and Gas Division, State Geological Survey of Kansas, Lawrence, Kansas 66044.

Operator

DuPont Oil Co.

DESIGNATE TYPE OF COMP.: OIL, GAS, DRY HOLE, SWDW, ETC.:

Well No. 2

Lease Name Gatton

Oil & Gas

S 34 T 31 R 6 E
XX

WELL LOG

Show all important zones of porosity and contents thereof; corod intervals, and all drill-stem tests, including depth interval tested, cushion used, time tool open, flowing and shut-in pressures, and reservoirs.

SHOW GEOLOGICAL MARKERS, LOGS RUN, OR OTHER DESCRIPTIVE INFORMATION.

Sample Tops

FORMATION DESCRIPTION, CONTENTS, ETC.	TOP	BOTTOM	NAME	DEPTH
			Layton	2186
			KC	2304
			Cleveland	2508
			Altamont	2554

USE ADDITIONAL SHEETS, IF NECESSARY, TO COMPLETE WELL RECORD.

Date Received

Handwritten Signature

Operator & Part Owner

Signature

June 26, 1981

Title

Date

911-31-02