

KANSAS

WELL COMPLETION REPORT AND
DRILLER'S LOG

State Geological Survey
WICHITA BRANCH

API No. 15 — 035 — 22,702
County Number

Operator: DuPont Oil Co.

Address: 660 Edgewater Road, Wichita, Kansas 67230

Well No. 4 Lease Name Gatton

Footage Location: 990 feet from ~~XX~~ (S) line 330 feet from (E) ~~XX~~ line

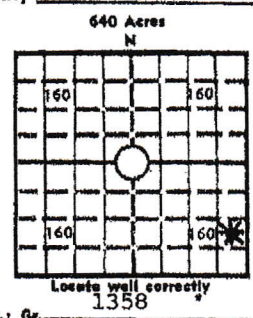
Principal Contractor: Edco Drilling Co. Geologist: Mervyn Mace

Spud Date: 12-18-80 Data Completed: 12-21-80 Total Depth: 2690 F.B.T.D.

Directional Deviation: ON and/or Gas Purchaser: Clear Creek-Oil; Cities Service

34-31-6E

S. 34 T. 31 R. 6E E
NE SE SE
County Cowley



Elev.: Gr. 1358
DF KB 1363

CASING RECORD

Report of all strings set — surface, intermediate, production, etc.

Purpose of string	Size hole drilled	Size casing set (in O.D.)	Weight lbs./ft.	Setting depth	Type cement	Sacks	Type and percent additives
Surface	12 1/4	8 5/8"		200'			
Production	7 7/8	4 1/2"		2690'			

LINER RECORD

PERFORATION RECORD

Top, ft.	Bottom, ft.	Sacks cement	Shots per ft.	Size & type	Depth interval
			2		2596-2624

TUBING RECORD

ACID, FRACTURE, SHOT, CEMENT SQUEEZE RECORD

Amount and kind of material used	Depth interval treated
250 GA: Frac'd w/1000 BW + sd.	2596-2624

INITIAL PRODUCTION

Date of first production: _____ Producing method (flowing, pumping, gas lift, etc.): Pumping

RATE OF PRODUCTION PER 24 HOURS	Oil	Gas	Water	Gas-oil ratio
	10 bbls.	5.8 MCF	90 bbls.	580

Disposition of gas (vented, used on lease or sold): Vented at first. Now sold to Cities Service Gas Co. Producing interval (s): 2596-2624

INSTRUCTIONS: As provided in KCC Rule 82-2-125, within 90 days after completion of a well, one completed copy of this Drillers Log shall be transmitted to the State Geological Survey of Kansas, 4150 Monroe Street, Wichita, Kansas 67209. Copies of this form are available from the Conservation Division, State Corporation Commission, 245 No. Water, Wichita, Kansas 67202. Phone AG 316-522-2206. If confidential custody is desired, please note Rule 82-2-125. Drillers Logs will be on open file in the Oil and Gas Division, State Geological Survey of Kansas, Lawrence, Kansas 66044.

Operator DuPont Oil Co.		DESIGNATE TYPE OF COMP.: OIL, GAS, DRY HOLE, SWDW, ETC.:
Well No. 4	Lease Name Gatton	Oil & Gas
S <u>34</u> T <u>31</u> R <u>6E</u> E WX		

WELL LOG

Show all important zones of porosity and contents thereof; cored intervals, and all drill-stem tests, including depth interval tested, cushion used, time tool open, flowing and shut-in pressures, and recoveries.

SHOW GEOLOGICAL MARKERS, LOGS RUN,
OR OTHER DESCRIPTIVE INFORMATION.
Log Tops

FORMATION DESCRIPTION, CONTENTS, ETC.	TOP	BOTTOM	NAME	DEPTH
			Layton	2225
			Kansas City	2360
			Cleveland	2566
			Altamont	2627

USE ADDITIONAL SHEETS, IF NECESSARY, TO COMPLETE WELL RECORD.

Date Received	<i>Paul A. Neal</i>
	Signature
	Operator & Part Owner
	Title
	June 26, 1981
	Date

34-31-96