

ADVANTAGE ELEVATIONS

OIL FIELD SURVEYORS

BOX 8604 - PRATT, KS 67124
(620) 672-6491

113141

INVOICE NO.

LOTUS OPERATING CO

OPERATOR

1

NO.

ACHENBACH 'L'

FARM

Barber

COUNTY

11

S

35s

T

13w

R

C NE NE SE

LOCATION

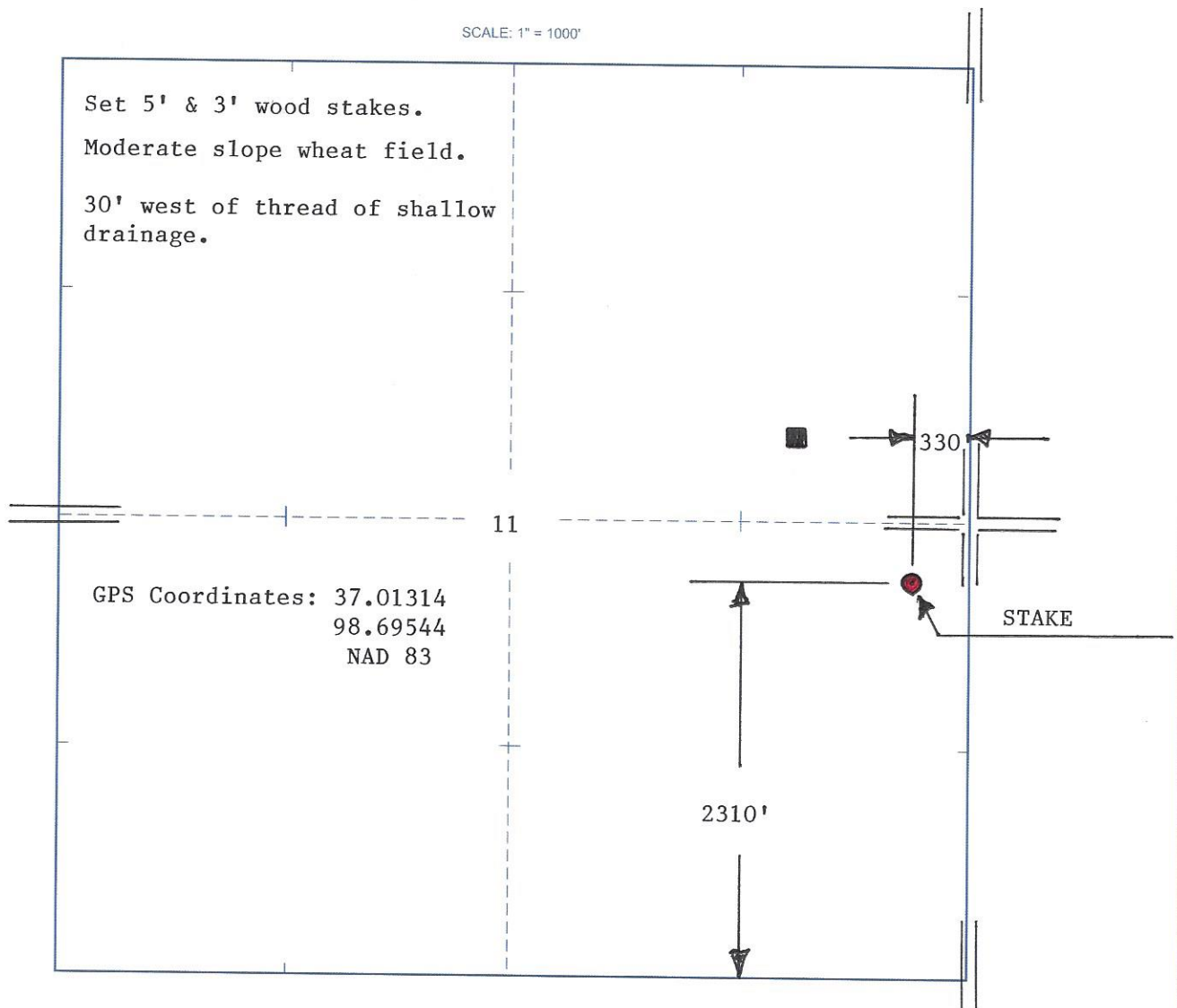
ELEVATION: 1469' GR



LOTUS OPERATING CO
100 S Main, Ste 420
Wichita, KS 67202

AUTHORIZED BY: Tim Hellman

SCALE: 1" = 1000'



DATE STAKED: 1/13/14