

COMPANY: Downing-Nelson Oil Co., Inc
WELL: Wilma Scherndallev #2-28

LOCATION: 230' ENL-1756' FEL
SEC. 28 TWP. 14S RGE. 19W

COUNTY: Ellis
STATE: KANSAS

OPERATOR: ANCOI
CONTRACTOR: Discretion Drilling, Inc #3
COMM: 10-05-13 COMP: 10-11-13

SURF: 858'-222' PROD: 3857
TOTAL DEPTH DRILLERS: 3857
TOTAL DEPTH LOG: 3857

FORMATION TOPS AND STRUCTURAL POSITION

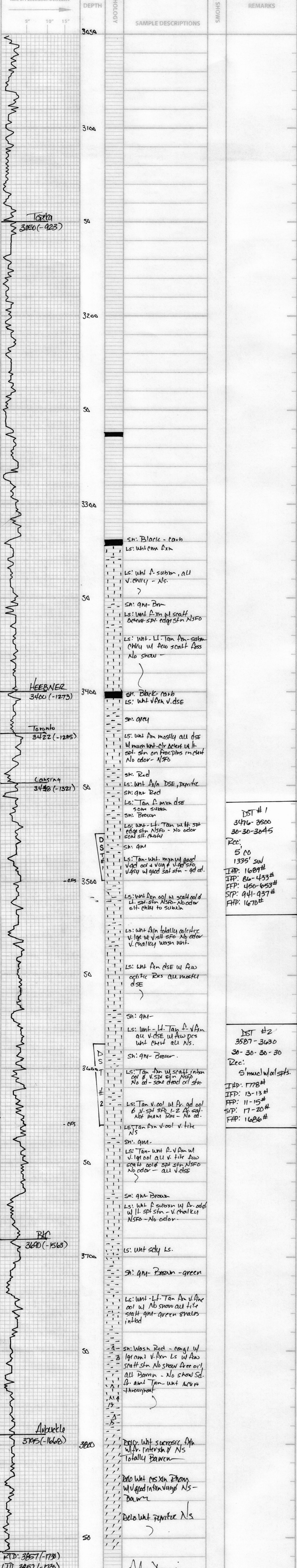
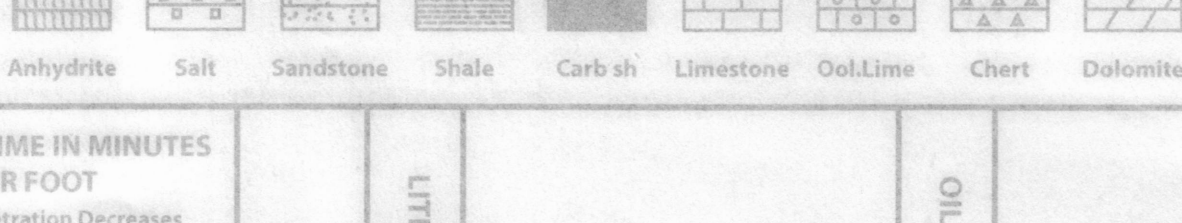
FORMATION	SAMPLE TOP	ELECTRIC LOG DATA TOP	SUB-SEA POSITION	STRUCTURAL POSITION
Anhydrite Base	1978	1373	-1754	+5
Toprock	3150	3147	-1753	-5
Toprock	3400	3398	-1271	-1
Toprock	3422	3418	-1271	-1
Toprock	3448	3445	-1271	-1
Toprock	3475	3472	-1271	-1
Toprock	3495	3492	-1271	-1
Toprock	3795	3794	-1667	-14

REFERENCE WELL FOR STRUCTURE: ANCOI Wilma S. #1-28
1856' ENL-574' FEL SIC 28-14S-19W
Ellis Co., Ks.

DRILL STEM TESTS

No.	Interval	IFP Time	ISPT Time	FFP Time	IFP-HR	RECOVERY

LEGEND



DST #1
3476-3500
30-30-3045
Rec: 5' CO
1335' SW
IFP: 1689#
IFP: 86-433#
FFP: 450-653#
SIP: 941-937#
FFP: 1670#

DST #2
3587-3630
30-30-30-30
Rec: 5' incl w/ all spts.
IFP: 1778#
IFP: 13-13#
FFP: 11-15#
SIP: 17-20#
FFP: 1686#