

Randall Kilian Corporation

Geologist



**Certified Petroleum
Geologist #3351
License #224**

P.O. Box 26
Hays, Kansas 67601-0026
Phone: 785-628-6061
Cell: 785-635-1349

GEOLOGIST'S WELL REPORT

COMPANY STAAB OIL CO. (6037)

WELL Lawrence #1

FIELD Schmeidler

LOCATION (legal) Ap. NE SW NE SE
(1810' FSL & 860' FEL)

Section 28 TWP 12S RGE 17W

(Map) 3 1/4 mi N of Catherine, Ks.

COUNTY Ellis STATE Kansas

ELEVATION: 2133' K.B., 2128' G.L.

Depths measured from Kelly Bushing

A. P. I. NUMBER 15-051-26625

GEOLOGY BY Randall Kilian

PERTINENT WELL DATA

CONTRACTOR Shields Oil Producers

RIG #2 HYDRAULICS Beth 225 6x14x56
(George Begler TP)

DRILL PIPE 4 1/2" X-H COLLARS 6 1/2" 8 (293')

CASING: SURFACE 8 5/8" @ 228' w/ 150 sx Common

PRODUCTION 5 1/2" @ 3747' w/ 150 sx Common
PC in Anhydrite

DRILLING FLUID: COMPANY Mud-Co/Service Mud, Inc.
(Gary Schmidtberger)

TYPE: Chemical

REMARKS: Full service

DRILL STEM TESTS: COMPANY Trilobite Testing Inc.
(Jeff Brown)

NUMBER OF TESTS Three (3)

ELECTIC LOGS: COMPANY Pioneer Energy Services

DETAIL (5") 3000' - RTD

TYPE DI, Comp N-D, Micro

DRILLING TIME FROM 3050' TO RTD

SAMPLE TIME FROM 3050' TO RTD

SUPERVISION FROM 3050' TO RTD

VERTICAL DEVIATION 0°@ 231', 1°@ 3750'

PLUGGING REPORT 30 sx Rat, 15 sx Mouse

RESERVE PIT 750 bbls., Chl. 82,000

DRILL STEM TESTS

NO	INTERVAL	IFF/TIME	ISIP/TIME	FFF/TIME	FSIP/TIME	IHP/FHP	RECOVERY
1	LKc C-F 3387- 3491'	93# 124# 5"	428# 60"	130# 187# 30"	391# 30"	1705# 1637#	217' Sl,O,C,Mud 62' W,Mud w/ s.o.
2	Arb. 3625- 3685'	83# 198# 5"	766# 60"	181# 560# 60"	748# 60"	1887# 1822#	567' G,W,O,Mud 630' Sl,O&G,C,M,Wt.
3	Arb. 3624- 3666'	23# 45# 5"	724# 60"	55# 151# 60"	692# 90"	1915# 1860#	441' GIP 188' G,H,O,C,Mud 39 124' G,W,H,O,C,Mud
4							
5							
6							
7							
8							

MUD RECORD						
CHK	DEPTH	WT	VIS	FIL	CHL	YP
1	2944'					
2	2945'	8.6	60+	6.0	1.9k	35
3	3190'	8.9	55			
4	3320'	9.0	53			
5	3491'	9.2	56	6.0	1.9k	25
6	3550'	9.1	46			
7	3615'	9.2	45			
8	3750'	9.4	60	7.6	2k	25
9						
10						
11						

Displaced
LCM 3#

LCM 1#
LCM 2#

LCM 1# \$6159

BIT RECORD					
NO	SIZE	MAKE	TYPE	DEPTH-OUT	HOURS
1	12 1/4"	Reed	RR	231'	7
2	7 7/8"	Reed	S52	3750'	94 1/2
3					
4					
5					
6					

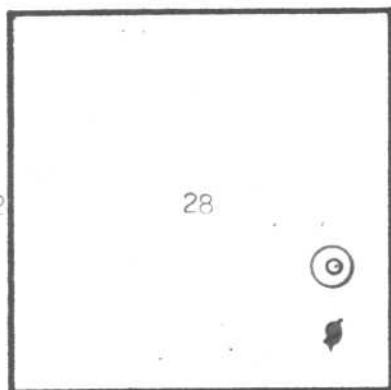
FORMATION TOPS & STRUCTURAL GEOLOGY

R 17 W

REFERRED TO:

- A: RP NIXON OPERATIONS
#4 Schmeidler West NW SE SE 28
- B: _____
- C: _____
- D: _____
- E: _____

T
12
S



STRATIGRAPHIC MARKERS	SUBJECT WELL		STRUCTURAL POSITION					
	SAMPLE	E. LOG	DATUM	A	B	C	D	E
Anhydrite	1344'	1338'	+ 789	+ 794				
Base	1379'	1379'	+ 754	+ 756				
Topeka	3114'	3111'	- 978	- 973				
Heeb. Sh.	3351'	3349'	-1216	-1221				
Toronto	3371'	3369'	-1236	-1242				
Lansing	3396'	3394'	-1261	-1267				
PKc.	3626'	3628'	-1495	-1501				
Arbuckle	3659'	3656'	-1523	-1550				
TD	3750'	3748'	-1615	-1604				

Pipe strap 1.28' short.

*Structural position of subject well as compared to referred well.

SUMMARY

The Lawrence #1 well was drilled with Shields Oil Producers tools rig #2 beginning 10-18-13 and drilling was completed 10-16-13.

The drill site was located via a 3-D seismic survey.

The well ran high structurally to the referenced well. Poor oil shows were encountered in the LKc Group. DST #1 was an inconclusive test. The tool slid 10' to bottom and recovered more fluid than expected.

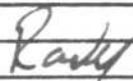
The LKc F & C may produce some oil after completion.

The Arbuckle was encountered 27' high with good oil shows. DST #2 was over the upper 29'. Oil and gas cut muddy water was recovered. DST #3 over the upper 10' was a positive test.

Based upon all data, casing was set and cemented to further test and produce the well.

Recommended perfs: Arb. 3658-59', LKc F 3474-75',
C 3422-23, Toronto 3372-74'.

Respectfully,



Randall Kilian

DRILLING TIME (min/ft)

1/2 1 2 3 4 5 6 7 8 9 10

POOR
FAIR
GOOD
& DST

LITHOLOGY (LAGGED)

REMARKS

1112

ANV. 40

1350

60

70

Base

80

50

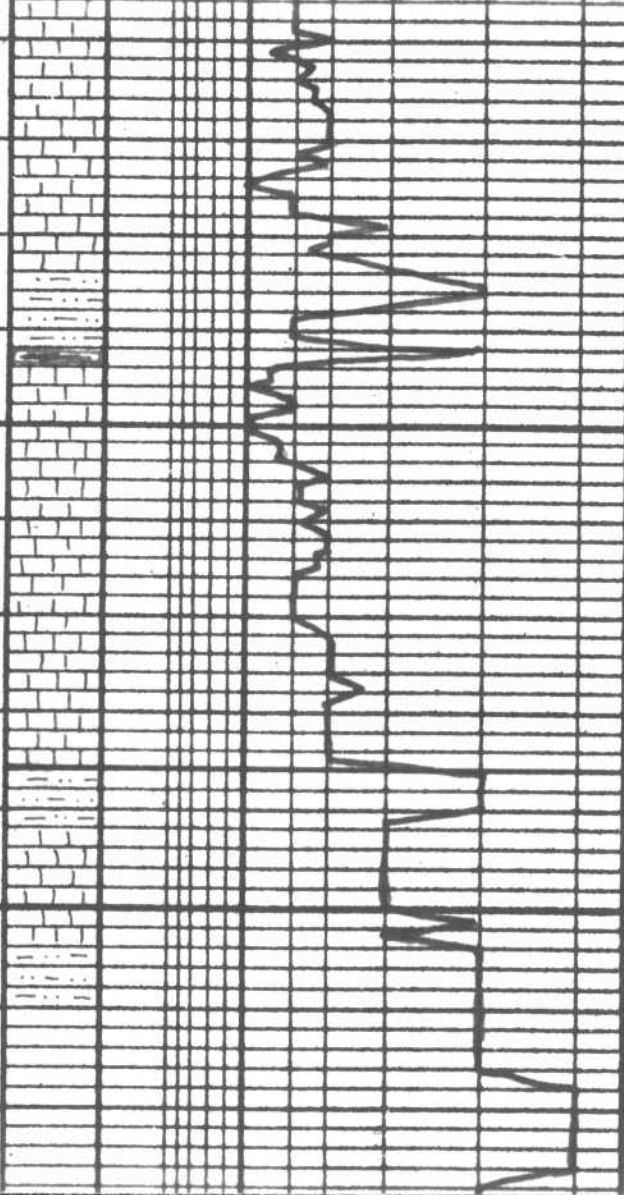
60

70

Displaced @ 2944'
Mud
Vis. - 60+ Y.P. - 35
WT. - 8.6 CHL. - 1.9K
WL. - 6.0 RM - 3#

80
90
10
20
30
40
50
60
70
80
90

Top of page



sh & sltst-gry-brn-grn.

ls - Tan-brn-gry-fn. fossil. shchally

sh & sltst-gry-brn.

ls - Tan-brn-gry-fn. fossil.

ls & slt

sh-dark gry

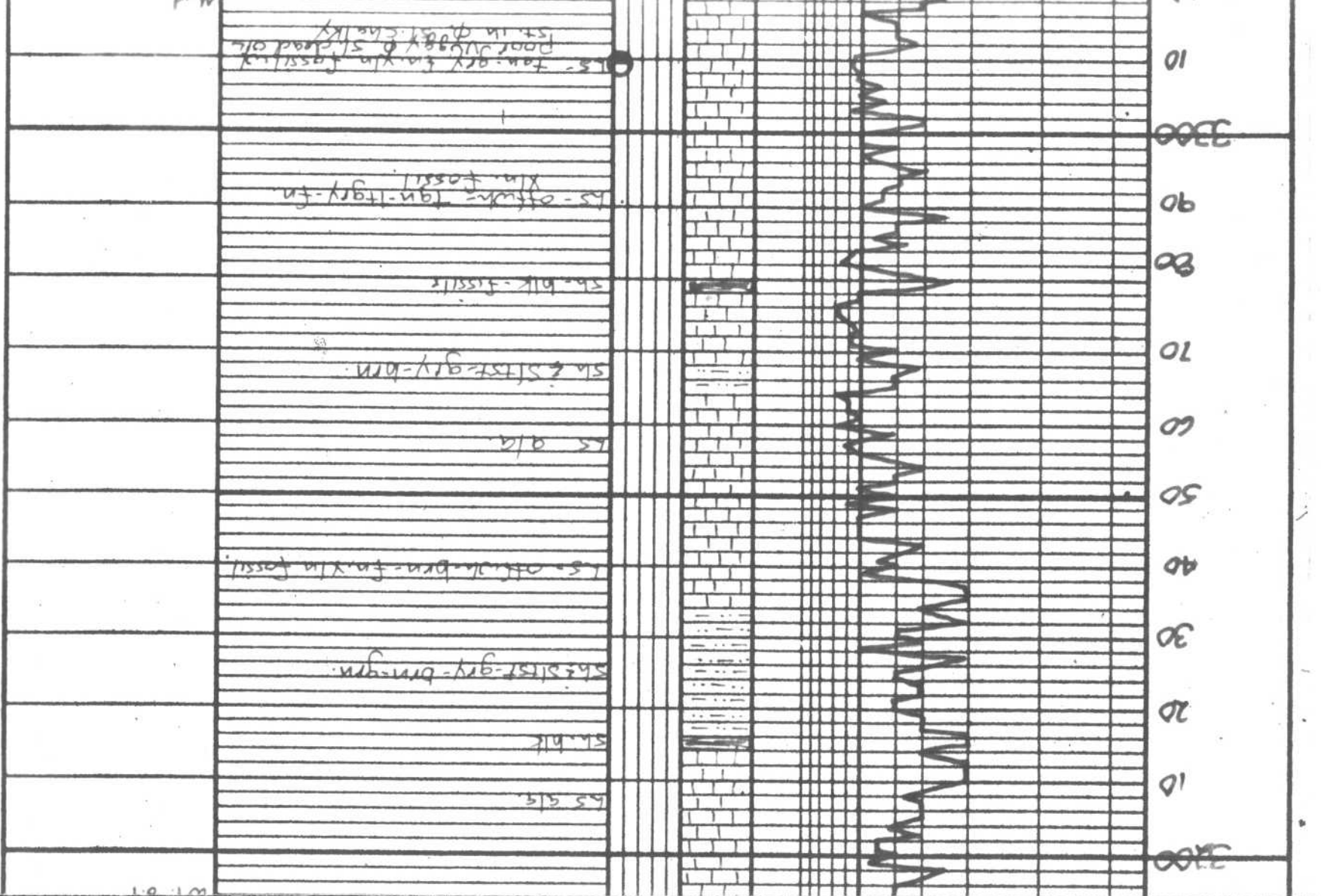
sh & sltst-gry-brn.

ls - Tan-gry-fn. fossil. shchally

ls & slt

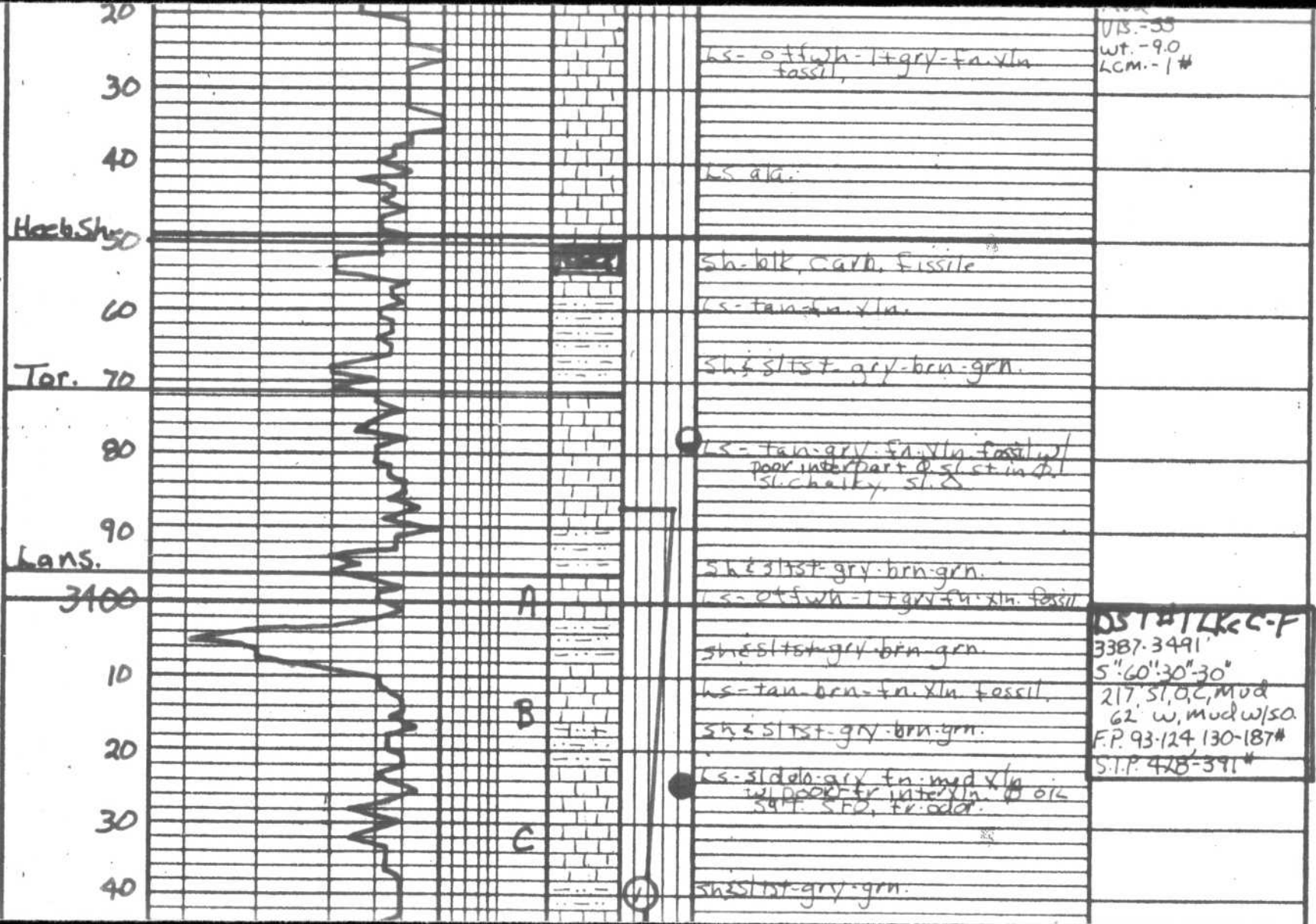
Mud
Vis: 55

geo cm location
7:00pm 10-2-13

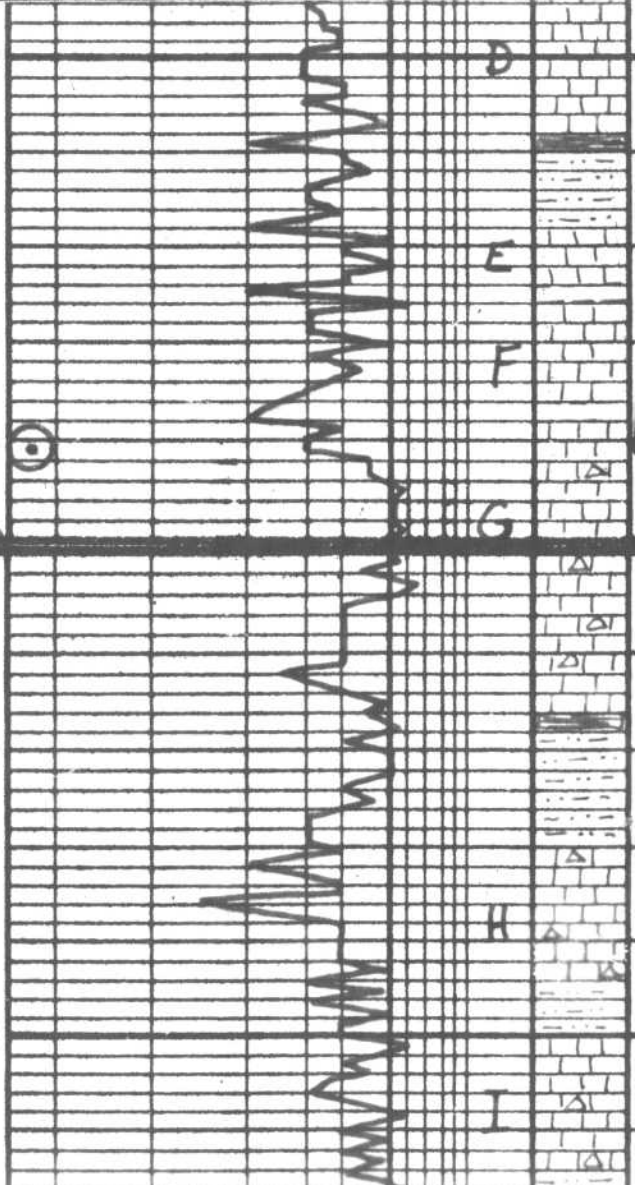


Mid

1000



50
60
70
80
90
10
20
30
40
50
60

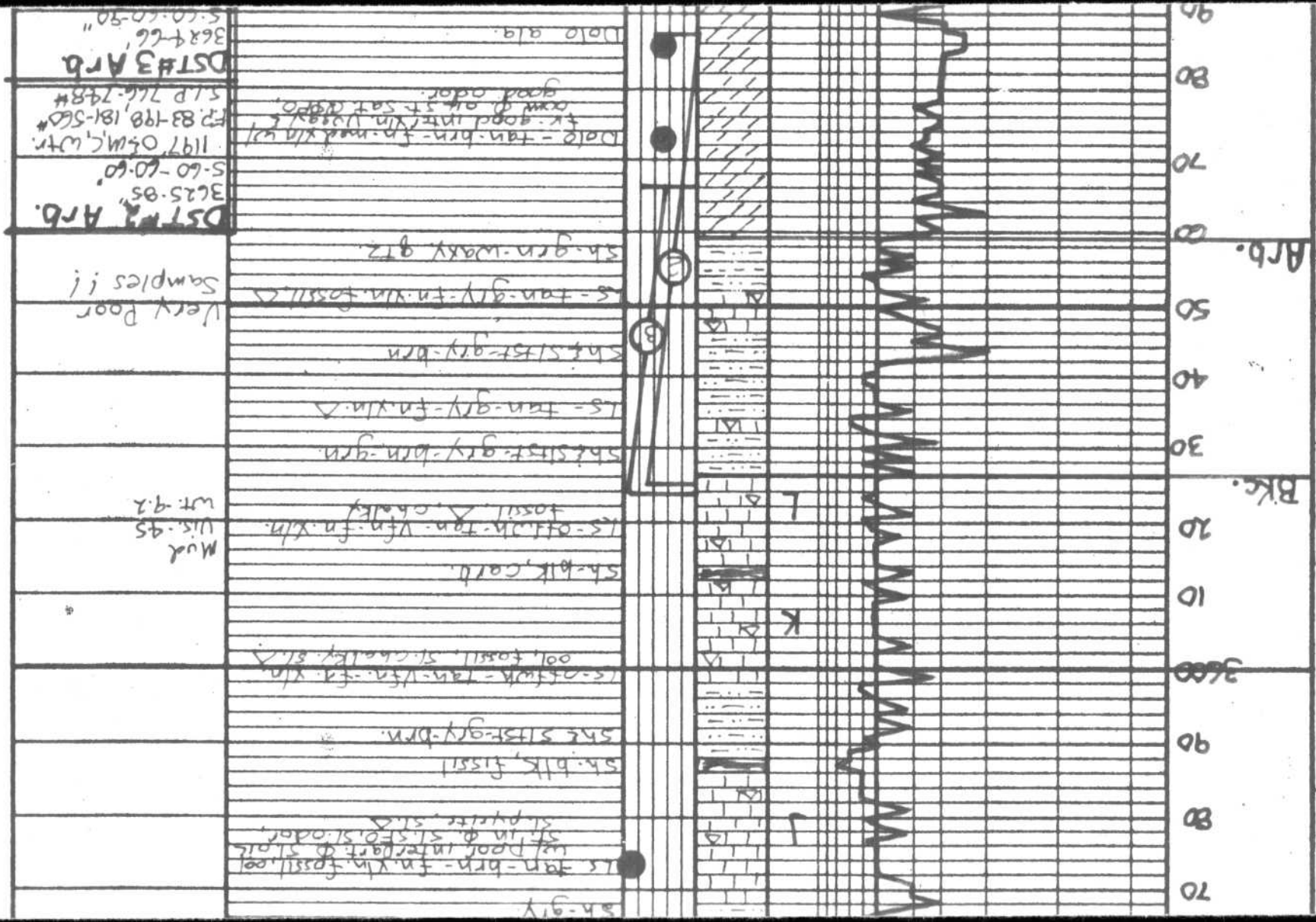


D
E
F
G
H
I

ls-dolb-tan-gry-fn.xln fossil
w/ ~~poor~~ tr. interpart. ϕ oil
sh-dark gry.
sh-siltst-gry-brn.
ls-tan-gry-fn.xln fossil.
sh-gry.
ls-tan-gry-fn.xln ool-fossil.
w/ ~~poor~~ tr. interpart. ϕ
oil-st. sat. sfg
ls-offwh-tan-fn.xln.ool.
sg. A. s. chalky
sh-dark gry
sh-siltst-gry-brn
ls-offwh-ltary-vfn-fn
xln fossil st. A
sh-siltst-gry-brn-grn.
ls-offwh-ltary-vfn-fn.
xln. ool-fossil w/ A,
st. chalky.

Strap 1.28'short.
Mud
Vis-56 Y.P.-25
wt-9.2 chl. 1.9%
wk-6.0 LCM-2#

Mud
Vis.-46
wt-9.1



sh - gy

ls tan-brn - fn. xln. fossil. col
 sh. in φ. silt. oil. odor.
 sh. pyrite - sh.

sh. blk, fossil

sh. silt - gr - drn.

ls - offwh - tan - fn. - fn. xln. oil, fossil, sh. cherty, sh.

sh. blk, cord.

ls - offwh - tan - fn. - fn. xln. fossil, sh. cherty

Mud
 U.S. - 95
 wt. gr.

sh. silt - gr - brn - grn

ls - tan - gr - fn. xln. Δ

sh. silt - gr - brn

ls - tan - gr - fn. xln. fossil. Δ

Very Poor
 Samples !!

sh. grn - waxy grt.

DST #2 Arb.
 3625 - 85
 5-60 - 60-60

197 O.S.M.C. WTR.
 #2-83-198, 181-560
 S.P. 766-748#

DST #3 Arb.
 3624-66
 5-60-60-90

Note also.

