



DRILL STEM TEST REPORT

Prepared For: **Landmark Resources, Inc.**

1616 S Voss Rd St 600
Houston TX 77057

ATTN: Terry McLeod

Beeson Trust #2-1

1-17s-34w Scott,KS

Start Date: 2013.11.16 @ 12:55:15

End Date: 2013.11.16 @ 23:10:15

Job Ticket #: 54699 DST #: 1

Trilobite Testing, Inc
PO Box 362 Hays, KS 67601
ph: 785-625-4778 fax: 785-625-5620

Printed: 2013.11.20 @ 10:01:48



TRILOBITE TESTING, INC.

DRILL STEM TEST REPORT

Landmark Resources, Inc.

1-17s-34w Scott,KS

1616 S Voss Rd St 600
Houston TX 77057

Beeson Trust #2-1

Job Ticket: 54699

DST#: 1

ATTN: Terry McLeod

Test Start: 2013.11.16 @ 12:55:15

GENERAL INFORMATION:

Formation: **Marmaton**

Deviated: No Whipstock: ft (KB)

Time Tool Opened: 15:20:30

Time Test Ended: 23:10:15

Test Type: Conventional Bottom Hole (Initial)

Tester: Mike Roberts

Unit No: 65

Interval: 4435.00 ft (KB) To 4460.00 ft (KB) (TVD)

Reference Elevations: 3104.00 ft (KB)

Total Depth: 4460.00 ft (KB) (TVD)

3094.00 ft (CF)

Hole Diameter: 7.88 inches Hole Condition: Fair

KB to GR/CF: 10.00 ft

Serial #: 8846 Outside

Press@RunDepth: 1283.54 psig @ 4436.00 ft (KB)

Capacity: 8000.00 psig

Start Date: 2013.11.16

End Date:

2013.11.16

Last Calib.:

2013.11.16

Start Time: 10:33:00

End Time:

20:48:00

Time On Btm:

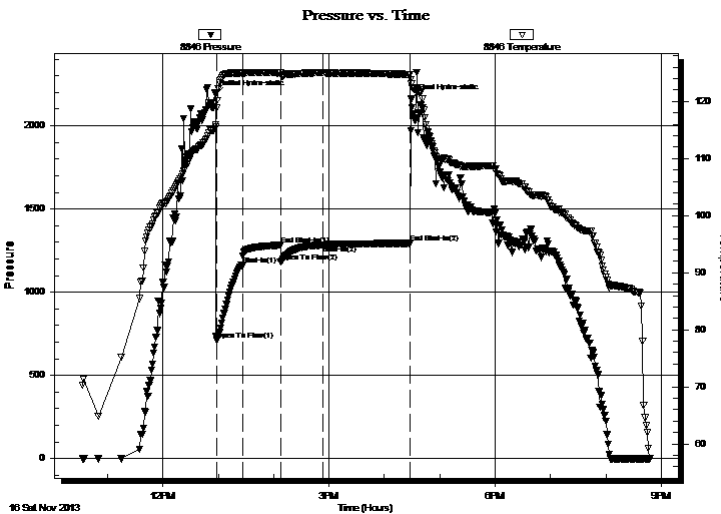
2013.11.16 @ 12:57:00

Time Off Btm:

2013.11.16 @ 16:29:15

TEST COMMENT: IF:BOB in 45 seconds
IS:BOB in 2 min GTS in 3 min.
FF:BOB in 30 seconds
FS:Built to 4" blow

PRESSURE SUMMARY



Time (Min.)	Pressure (psig)	Temp (deg F)	Annotation
0	2188.21	115.49	Initial Hydro-static
2	709.79	118.81	Open To Flow (1)
29	1161.27	124.93	Shut-In(1)
71	1282.68	124.96	End Shut-In(1)
71	1181.66	124.91	Open To Flow (2)
117	1283.54	125.00	Shut-In(2)
211	1293.89	124.74	End Shut-In(2)
213	2160.65	123.02	Final Hydro-static

Recovery

Length (ft)	Description	Volume (bbl)
124.00	gcmo 15% g 15% m 70%o	0.61
2790.00	gco 50%g 50%o	37.45
248.00	gco 20%g 80%o	3.48
0.00	GIP= 868 feet	0.00

Gas Rates

	Choke (inches)	Pressure (psig)	Gas Rate (Mcf/d)



**TRILOBITE
TESTING, INC**

DRILL STEM TEST REPORT

TOOL DIAGRAM

Landmark Resources, Inc.

1-17s-34w Scott,KS

1616 S Voss Rd St 600
Houston TX 77057

Beeson Trust #2-1

Job Ticket: 54699

DST#: 1

ATTN: Terry McLeod

Test Start: 2013.11.16 @ 12:55:15

Tool Information

Drill Pipe:	Length: 4120.00 ft	Diameter: 3.80 inches	Volume: 57.79 bbl	Tool Weight: 1500.00 lb
Heavy Wt. Pipe:	Length: 0.00 ft	Diameter: 0.00 inches	Volume: 0.00 bbl	Weight set on Packer: 25000.00 lb
Drill Collar:	Length: 309.00 ft	Diameter: 2.25 inches	Volume: 1.52 bbl	Weight to Pull Loose: 90000.00 lb
			<u>Total Volume: 59.31 bbl</u>	Tool Chased 0.00 ft
Drill Pipe Above KB:	17.00 ft			String Weight: Initial 78000.00 lb
Depth to Top Packer:	4435.00 ft			Final 82000.00 lb
Depth to Bottom Packer:	ft			
Interval between Packers:	25.00 ft			
Tool Length:	48.00 ft			
Number of Packers:	2	Diameter: 6.75 inches		

Tool Comments:

Tool Description

Tool Description	Length (ft)	Serial No.	Position	Depth (ft)	Accum. Lengths
Change Over Sub	1.00			4413.00	
Shut In Tool	5.00			4418.00	
Hydraulic tool	5.00			4423.00	
Safety Joint	3.00			4426.00	
Packer	5.00			4431.00	23.00 Bottom Of Top Packer
Packer	4.00			4435.00	
Stubb	1.00			4436.00	
Recorder	0.00	8737	Inside	4436.00	
Recorder	0.00	8846	Outside	4436.00	
Perforations	19.00			4455.00	
Bullnose	5.00			4460.00	25.00 Bottom Packers & Anchor

Total Tool Length: 48.00



**TRILOBITE
TESTING, INC**

DRILL STEM TEST REPORT

FLUID SUMMARY

Landmark Resources, Inc.

1-17s-34w Scott,KS

1616 S Voss Rd St 600
Houston TX 77057

Beeson Trust #2-1

Job Ticket: 54699

DST#: 1

ATTN: Terry McLeod

Test Start: 2013.11.16 @ 12:55:15

Mud and Cushion Information

Mud Type: Gel Chem
Mud Weight: 9.00 lb/gal
Viscosity: 53.00 sec/qt
Water Loss: 7.93 in³
Resistivity: 0.00 ohm.m
Salinity: 5000.00 ppm
Filter Cake: 1.00 inches

Cushion Type:
Cushion Length: ft
Cushion Volume: bbl
Gas Cushion Type:
Gas Cushion Pressure: psig

Oil API: 29 deg API
Water Salinity: 0 ppm

Recovery Information

Recovery Table

Length ft	Description	Volume bbl
124.00	gcmo 15% g 15% m 70%o	0.610
2790.00	gco 50%g 50%o	37.451
248.00	gco 20%g 80%o	3.479
0.00	GIP= 868 feet	0.000

Total Length: 3162.00 ft Total Volume: 41.540 bbl

Num Fluid Samples: 0

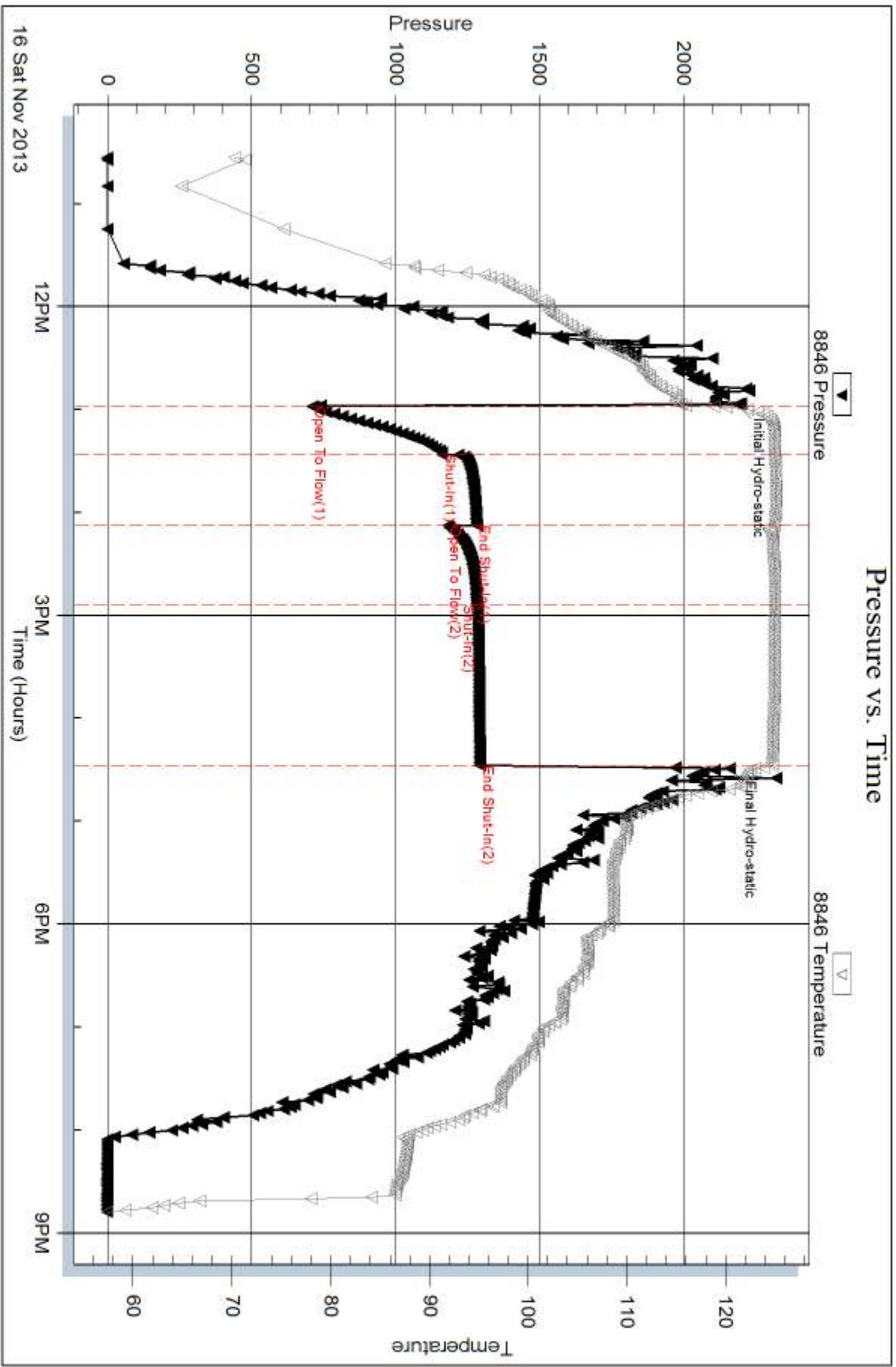
Num Gas Bombs: 0

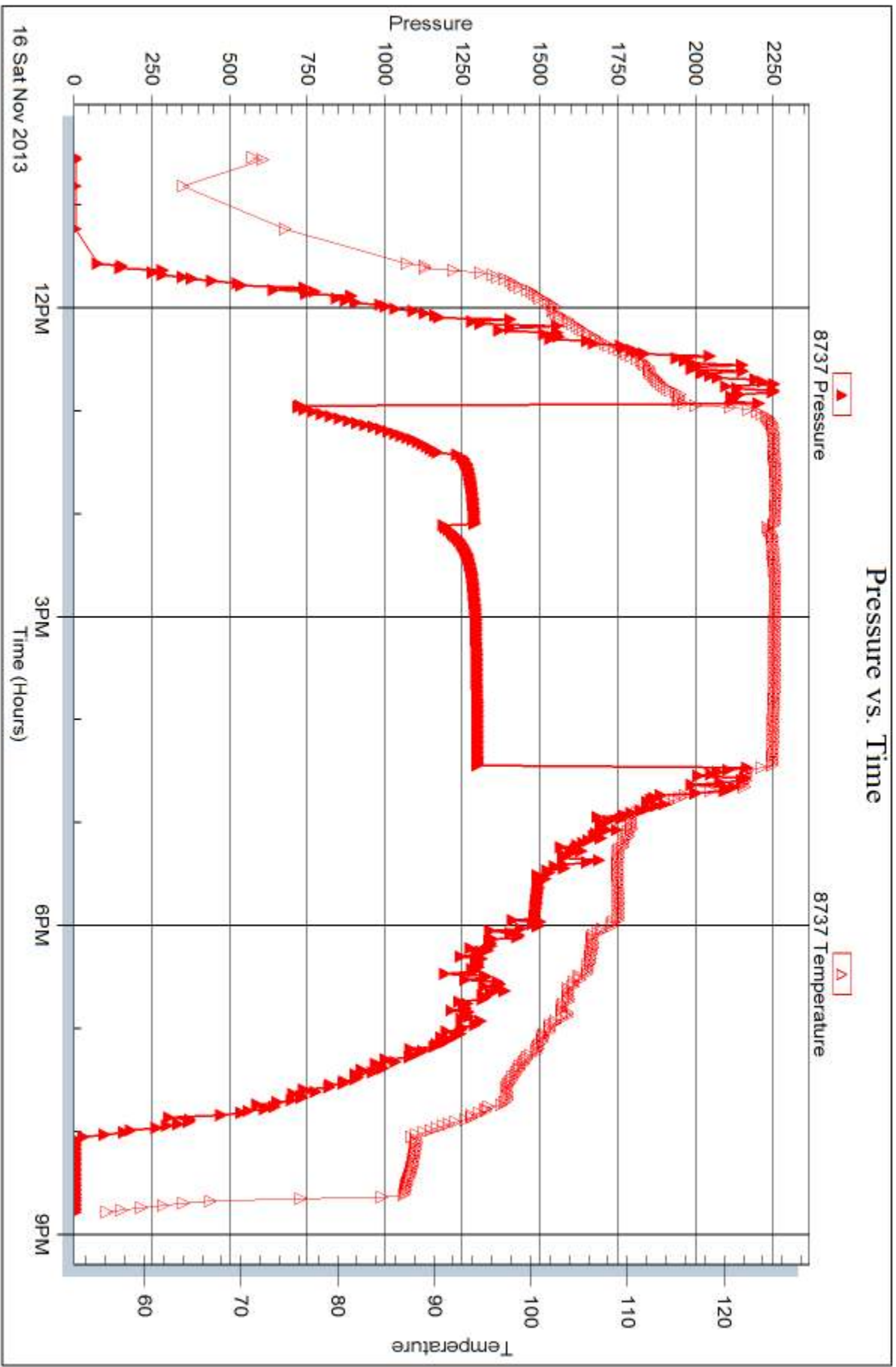
Serial #:

Laboratory Name:

Laboratory Location:

Recovery Comments: API= 32@80 corrected to 29 at 60







DRILL STEM TEST REPORT

Prepared For: **Landmark Resources, Inc.**

1616 S Voss Rd St 600
Houston TX 77057

ATTN: Terry McLeod

Beeson Trust #2-1

1-17s-34w Scott,KS

Start Date: 2013.11.17 @ 05:46:15

End Date: 2013.11.17 @ 13:16:30

Job Ticket #: 54700 DST #: 2

Trilobite Testing, Inc
PO Box 362 Hays, KS 67601
ph: 785-625-4778 fax: 785-625-5620

Printed: 2013.11.20 @ 10:00:44



TRILOBITE TESTING, INC

DRILL STEM TEST REPORT

Landmark Resources, Inc.

1-17s-34w Scott,KS

1616 S Voss Rd St 600
Houston TX 77057

Beeson Trust #2-1

ATTN: Terry McLeod

Job Ticket: 54700

DST#: 2

Test Start: 2013.11.17 @ 05:46:15

GENERAL INFORMATION:

Formation: **Altamont**

Deviated: No Whipstock: ft (KB)

Time Tool Opened: 07:42:45

Time Test Ended: 13:16:30

Test Type: Conventional Bottom Hole (Reset)

Tester: Mike Roberts

Unit No: 65

Interval: 4466.00 ft (KB) To 4510.00 ft (KB) (TVD)

Reference Elevations: 3104.00 ft (KB)

Total Depth: 4510.00 ft (KB) (TVD)

3094.00 ft (CF)

Hole Diameter: 7.88 inches Hole Condition: Fair

KB to GR/CF: 10.00 ft

Serial #: 8846 Inside

Press@RunDepth: 31.70 psig @ 4467.00 ft (KB)

Capacity: 8000.00 psig

Start Date: 2013.11.17 End Date: 2013.11.17

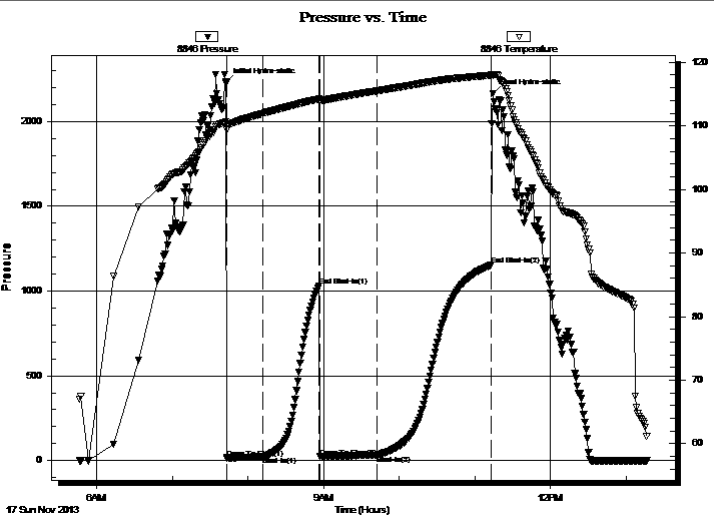
Last Calib.: 2013.11.17

Start Time: 05:46:15 End Time: 13:16:30

Time On Btm: 2013.11.17 @ 07:42:30

Time Off Btm: 2013.11.17 @ 11:14:15

TEST COMMENT: IF:Built to 1/2" blow
IS:No return blow
FF:Built to 1/4" blow
FS:No return blow



PRESSURE SUMMARY

Time (Min.)	Pressure (psig)	Temp (deg F)	Annotation
0	2227.60	110.63	Initial Hydro-static
1	14.31	109.33	Open To Flow (1)
30	22.63	111.96	Shut-In(1)
74	1030.74	114.21	End Shut-In(1)
75	22.30	114.02	Open To Flow (2)
120	31.70	115.49	Shut-In(2)
211	1152.12	117.94	End Shut-In(2)
212	2166.46	118.01	Final Hydro-static

Recovery

Length (ft)	Description	Volume (bbl)
15.00	gcmo 5%g 40%m 55%o	0.07

Gas Rates

	Choke (inches)	Pressure (psig)	Gas Rate (Mcf/d)

* Recovery from multiple tests



**TRILOBITE
TESTING, INC**

DRILL STEM TEST REPORT

TOOL DIAGRAM

Landmark Resources, Inc.

1-17s-34w Scott,KS

1616 S Voss Rd St 600
Houston TX 77057

Beeson Trust #2-1

Job Ticket: 54700

DST#: 2

ATTN: Terry McLeod

Test Start: 2013.11.17 @ 05:46:15

Tool Information

Drill Pipe:	Length: 4151.00 ft	Diameter: 3.80 inches	Volume: 58.23 bbl	Tool Weight: 1500.00 lb
Heavy Wt. Pipe:	Length: 0.00 ft	Diameter: 0.00 inches	Volume: 0.00 bbl	Weight set on Packer: 25000.00 lb
Drill Collar:	Length: 309.00 ft	Diameter: 2.25 inches	Volume: 1.52 bbl	Weight to Pull Loose: 90000.00 lb
			<u>Total Volume: 59.75 bbl</u>	Tool Chased 0.00 ft
Drill Pipe Above KB:	18.00 ft			String Weight: Initial 78000.00 lb
Depth to Top Packer:	4466.00 ft			Final 78000.00 lb
Depth to Bottom Packer:	ft			
Interval between Packers:	44.00 ft			
Tool Length:	68.00 ft			
Number of Packers:	2	Diameter: 6.75 inches		

Tool Comments:

Tool Description

Tool Description	Length (ft)	Serial No.	Position	Depth (ft)	Accum. Lengths
Change Over Sub	1.00			4443.00	
Shut In Tool	5.00			4448.00	
Hydraulic tool	5.00			4453.00	
Safety Joint	3.00			4456.00	
Packer	5.00			4461.00	24.00 Bottom Of Top Packer
Packer	5.00			4466.00	
Stubb	1.00			4467.00	
Recorder	0.00	8846	Inside	4467.00	
Recorder	0.00	8737	Outside	4467.00	
Perforations	5.00			4472.00	
Change Over Sub	1.00			4473.00	
Drill Pipe	31.00			4504.00	
Change Over Sub	1.00			4505.00	
Bullnose	5.00			4510.00	44.00 Bottom Packers & Anchor

Total Tool Length: 68.00



**TRILOBITE
TESTING, INC**

DRILL STEM TEST REPORT

FLUID SUMMARY

Landmark Resources, Inc.

1-17s-34w Scott,KS

1616 S Voss Rd St 600
Houston TX 77057

Beeson Trust #2-1

Job Ticket: 54700

DST#: 2

ATTN: Terry McLeod

Test Start: 2013.11.17 @ 05:46:15

Mud and Cushion Information

Mud Type: Gel Chem

Cushion Type:

Oil API:

0 deg API

Mud Weight: 9.00 lb/gal

Cushion Length:

ft

Water Salinity:

0 ppm

Viscosity: 53.00 sec/qt

Cushion Volume:

bbbl

Water Loss: 7.95 in³

Gas Cushion Type:

Resistivity: 0.00 ohm.m

Gas Cushion Pressure:

psig

Salinity: 5000.00 ppm

Filter Cake: 1.00 inches

Recovery Information

Recovery Table

Length ft	Description	Volume bbl
15.00	gcmo 5%g 40%m 55%o	0.074

Total Length: 15.00 ft Total Volume: 0.074 bbl

Num Fluid Samples: 0

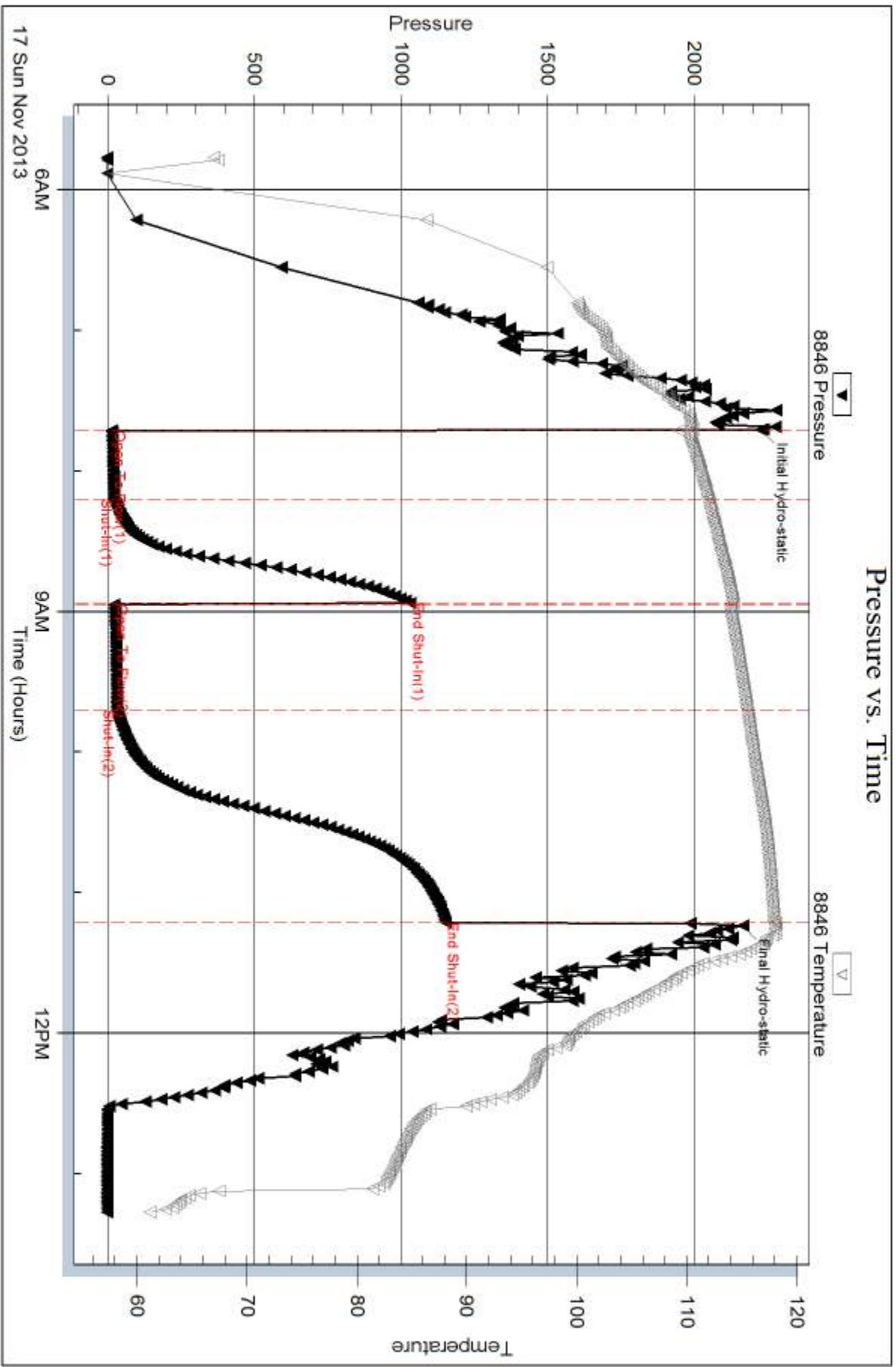
Num Gas Bombs: 0

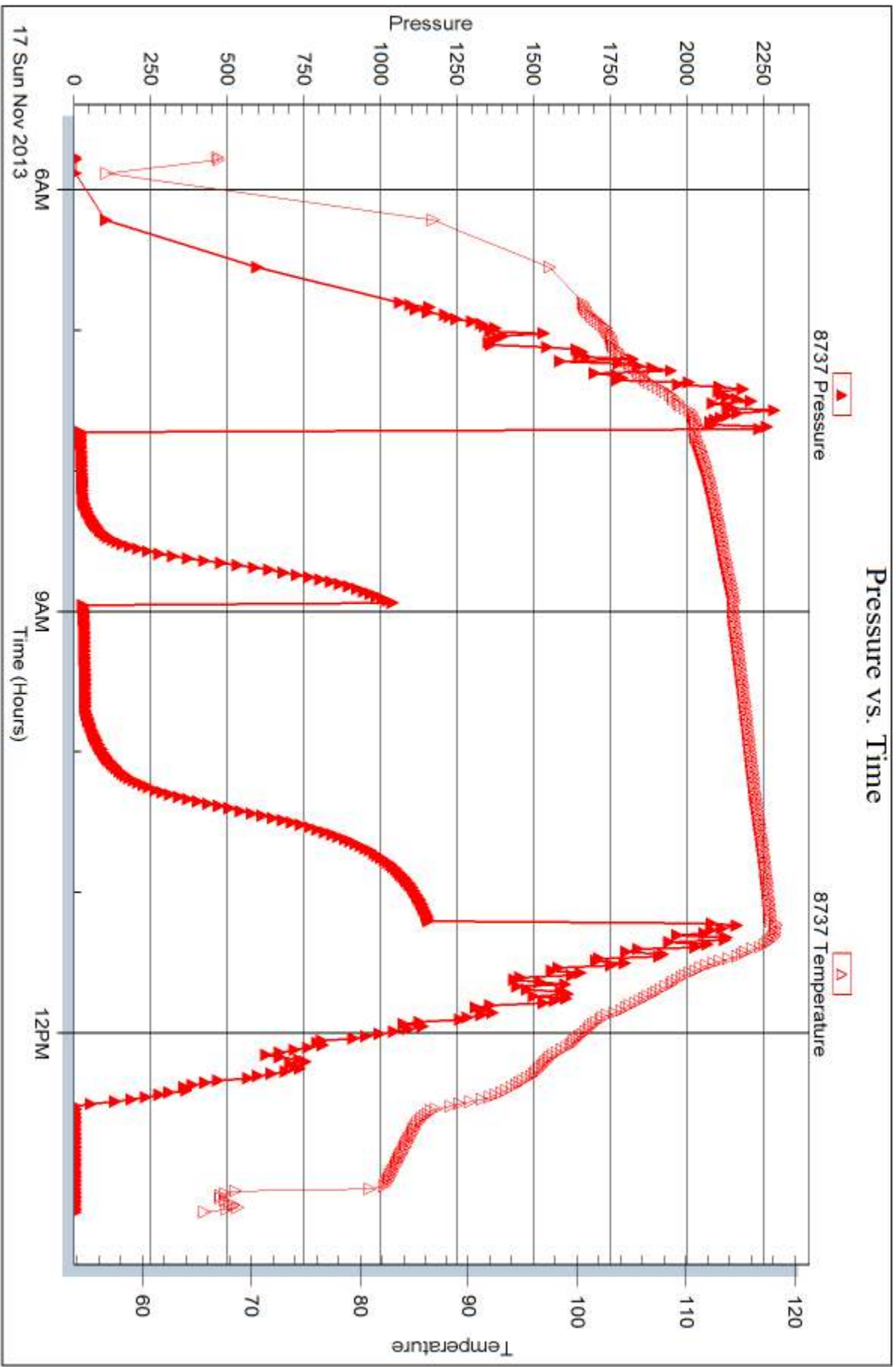
Serial #:

Laboratory Name:

Laboratory Location:

Recovery Comments:







DRILL STEM TEST REPORT

Prepared For: **Landmark Resources, Inc.**

1616 S Voss Rd St 600
Houston TX 77057

ATTN: Terry McLeod

Beeson Trust #2-1

1-17s-34w Scott,KS

Start Date: 2013.11.18 @ 08:10:15

End Date: 2013.11.18 @ 16:31:00

Job Ticket #: 54701 DST #: 3

Trilobite Testing, Inc

PO Box 362 Hays, KS 67601

ph: 785-625-4778 fax: 785-625-5620

Printed: 2013.11.20 @ 10:05:43



**TRILOBITE
TESTING, INC**

DRILL STEM TEST REPORT

Landmark Resources, Inc.

1-17s-34w Scott,KS

1616 S Voss Rd St 600
Houston TX 77057

Beeson Trust #2-1

ATTN: Terry McLeod

Job Ticket: 54701

DST#: 3

Test Start: 2013.11.18 @ 08:10:15

GENERAL INFORMATION:

Formation: **Myrick-Ft.Scott-John**

Deviated: No Whipstock: ft (KB)

Time Tool Opened: 10:18:45

Time Test Ended: 16:31:00

Test Type: Conventional Bottom Hole (Reset)

Tester: Mike Roberts

Unit No: 65

Interval: 4555.00 ft (KB) To 4730.00 ft (KB) (TVD)

Reference Elevations: 3104.00 ft (KB)

Total Depth: 4730.00 ft (KB) (TVD)

3094.00 ft (CF)

Hole Diameter: 7.88 inches Hole Condition: Fair

KB to GR/CF: 10.00 ft

Serial #: 8846 Inside

Press@RunDepth: 304.26 psig @ 4556.00 ft (KB)

Capacity: 8000.00 psig

Start Date: 2013.11.18

End Date:

2013.11.18

Last Calib.:

2013.11.18

Start Time: 08:10:15

End Time:

16:31:00

Time On Btm:

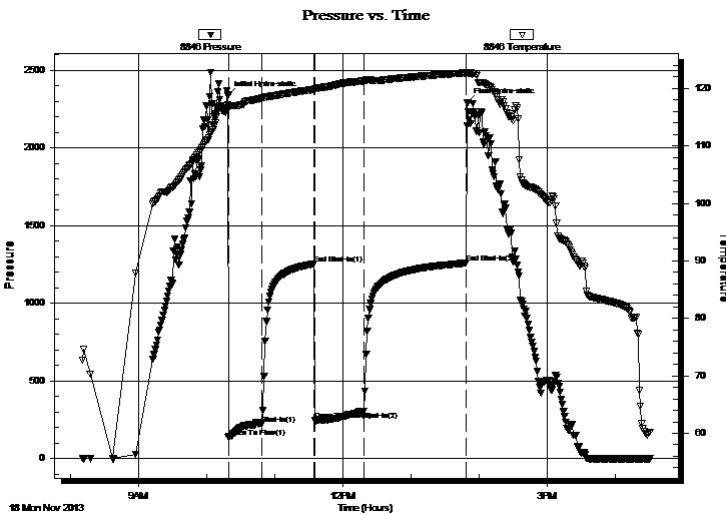
2013.11.18 @ 10:18:30

Time Off Btm:

2013.11.18 @ 13:49:30

TEST COMMENT: IF:BOB in 6 min.
IS:Return blow built to 5"
FF:BOB in 8 min
FS:Return blow built to 8"

PRESSURE SUMMARY



Time (Min.)	Pressure (psig)	Temp (deg F)	Annotation
0	2336.38	117.16	Initial Hydro-static
1	136.69	116.60	Open To Flow (1)
30	223.52	118.30	Shut-In(1)
76	1253.96	119.80	End Shut-In(1)
77	247.76	119.82	Open To Flow (2)
120	304.26	121.33	Shut-In(2)
210	1258.45	122.70	End Shut-In(2)
211	2288.72	122.75	Final Hydro-static

Recovery

Length (ft)	Description	Volume (bbl)
248.00	ocm 15%o 85%m	1.22
61.00	mco 15%m 85%o	0.30
310.00	mcgo 5%m 45%g 50%o	4.35
62.00	gcom 2%g 8%o 90%m	0.87
62.00	mco 50%m 50%o	0.87
0.00	GIP=496 ft	0.00

* Recovery from multiple tests

Gas Rates

Choke (inches)	Pressure (psig)	Gas Rate (Mcf/d)



**TRILOBITE
TESTING, INC**

DRILL STEM TEST REPORT

TOOL DIAGRAM

Landmark Resources, Inc.

1-17s-34w Scott,KS

1616 S Voss Rd St 600
Houston TX 77057

Beeson Trust #2-1

Job Ticket: 54701

DST#: 3

ATTN: Terry McLeod

Test Start: 2013.11.18 @ 08:10:15

Tool Information

Drill Pipe:	Length: 4237.00 ft	Diameter: 3.80 inches	Volume: 59.43 bbl	Tool Weight: 1500.00 lb
Heavy Wt. Pipe:	Length: 0.00 ft	Diameter: 0.00 inches	Volume: 0.00 bbl	Weight set on Packer: 25000.00 lb
Drill Collar:	Length: 309.00 ft	Diameter: 2.25 inches	Volume: 1.52 bbl	Weight to Pull Loose: 90000.00 lb
			<u>Total Volume: 60.95 bbl</u>	Tool Chased 0.00 ft
Drill Pipe Above KB:	15.00 ft			String Weight: Initial 78000.00 lb
Depth to Top Packer:	4555.00 ft			Final 79000.00 lb
Depth to Bottom Packer:	ft			
Interval between Packers:	175.00 ft			
Tool Length:	199.00 ft			
Number of Packers:	2	Diameter: 6.75 inches		

Tool Comments:

Tool Description

Tool Description	Length (ft)	Serial No.	Position	Depth (ft)	Accum. Lengths
Change Over Sub	1.00			4532.00	
Shut In Tool	5.00			4537.00	
Hydraulic tool	5.00			4542.00	
Safety Joint	3.00			4545.00	
Packer	5.00			4550.00	24.00 Bottom Of Top Packer
Packer	5.00			4555.00	
Stubb	1.00			4556.00	
Recorder	0.00	8846	Inside	4556.00	
Recorder	0.00	8737	Outside	4556.00	
Perforations	8.00			4564.00	
Change Over Sub	1.00			4565.00	
Drill Pipe	159.00			4724.00	
Change Over Sub	1.00			4725.00	
Bullnose	5.00			4730.00	175.00 Bottom Packers & Anchor

Total Tool Length: 199.00



**TRILOBITE
TESTING, INC**

DRILL STEM TEST REPORT

FLUID SUMMARY

Landmark Resources, Inc.

1-17s-34w Scott,KS

1616 S Voss Rd St 600
Houston TX 77057

Beeson Trust #2-1

Job Ticket: 54701

DST#: 3

ATTN: Terry McLeod

Test Start: 2013.11.18 @ 08:10:15

Mud and Cushion Information

Mud Type: Gel Chem

Cushion Type:

Oil API:

29 deg API

Mud Weight: 9.00 lb/gal

Cushion Length:

ft

Water Salinity:

0 ppm

Viscosity: 58.00 sec/qt

Cushion Volume:

bbbl

Water Loss: 9.56 in³

Gas Cushion Type:

Resistivity: 0.00 ohm.m

Gas Cushion Pressure:

psig

Salinity: 3300.00 ppm

Filter Cake: 1.00 inches

Recovery Information

Recovery Table

Length ft	Description	Volume bbl
248.00	ocm 15%o 85%m	1.220
61.00	mco 15%m 85%o	0.300
310.00	mcgo 5%m 45%g 50%o	4.348
62.00	gcom 2%g 8%o 90%m	0.870
62.00	mco 50%m 50%o	0.870
0.00	GIP=496 ft	0.000

Total Length: 743.00 ft Total Volume: 7.608 bbl

Num Fluid Samples: 0

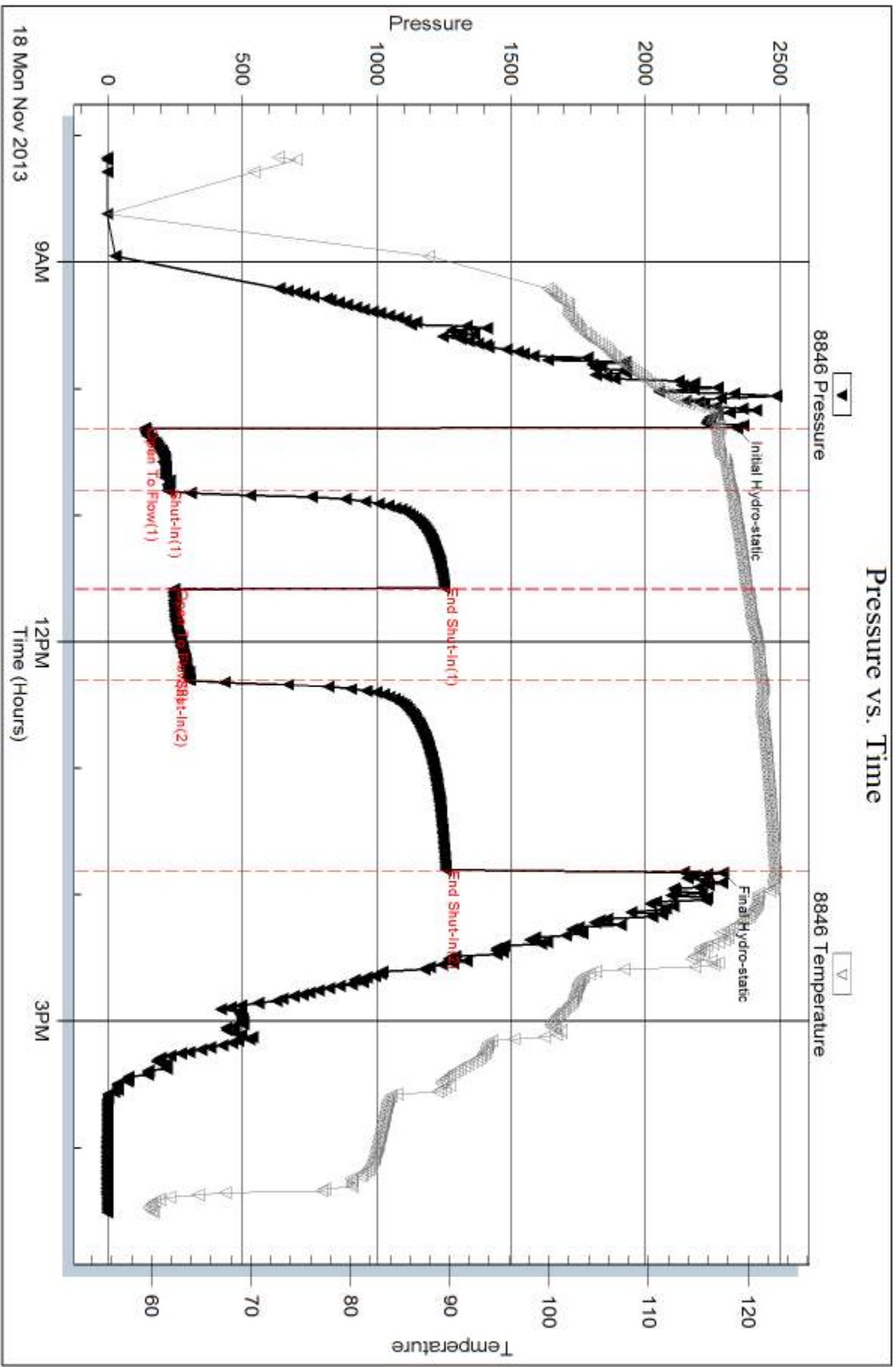
Num Gas Bombs: 0

Serial #:

Laboratory Name:

Laboratory Location:

Recovery Comments: API w as measured 29 @ 60 degrees Couldnt get a totally clean sample w/out any mud



18 Mon Nov 2013

9AM

12PM
Time (Hours)

3PM

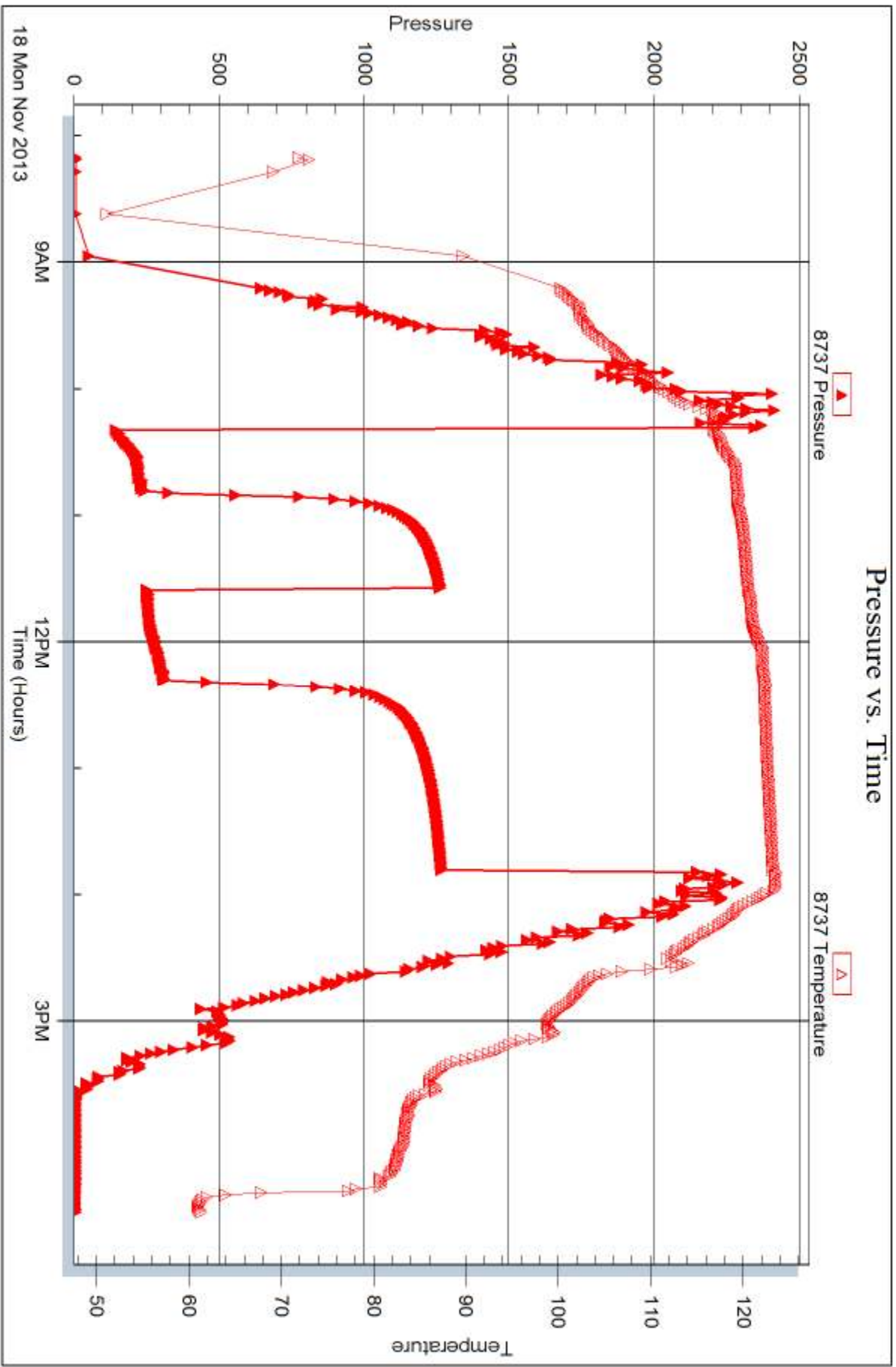
Serial #: 8737

Outside

Landmark Resources, Inc.

Beeson Trust #2-1

DST Test Number: 3



Trilobite Testing, Inc

Ref. No: 54701

Printed: 2013.11.20 @ 10:05:47



TRILOBITE TESTING INC.

1515 Commerce Parkway • Hays, Kansas 67601

Test Ticket

NO. 54699

Well Name & No. Beeson Trust 2-1 Test No. 1 Date 11-16-13
 Company Landmark Resources Inc Elevation 3104 KB 3094 GL
 Address 1616 S. Voss Rd STE 600 Houston TX 77057
 Co. Rep / Geo. Terry McLeod Rig Murfin 21
 Location: Sec. 1 Twp. 17 Rge. 34 Co. Scott State KS

Interval Tested 4435-4460 Zone Tested Marmaton
 Anchor Length 25 Drill Pipe Run 4120 Mud Wt. 9.2
 Top Packer Depth 4431 Drill Collars Run 309 Vis 53
 Bottom Packer Depth 4435 Wt. Pipe Run 0 WL 8.0
 Total Depth 4460 Chlorides 5000 ppm System LCM 2

Blow Description IF: BOB in 45 Seconds
IS: BOB in 2 Min GTS in 3 Min to Low to Gauge
FF: BOB in 30 Seconds
FS: Built to 4"

Rec	Feet of	%gas	%oil	%water	%mud
<u>0</u>	<u>Feet of GIP = 868</u>	<u>100</u>	<u>0</u>	<u>0</u>	<u>0</u>
<u>248</u>	<u>Feet of gco</u>	<u>20</u>	<u>80</u>	<u>0</u>	<u>0</u>
<u>2790</u>	<u>Feet of gco</u>	<u>0</u>	<u>0</u>	<u>0</u>	<u>0</u>
<u>2790</u>	<u>Feet of gco</u>	<u>50</u>	<u>50</u>	<u>0</u>	<u>0</u>
<u>124</u>	<u>Feet of gcmo</u>	<u>15</u>	<u>70</u>	<u>0</u>	<u>15</u>

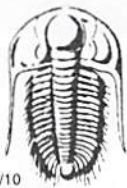
Rec Total 3162 BHT 123 Gravity 29 API RW — @ — °F Chlorides 0 ppm

(A) Initial Hydrostatic 2188 Test 1250.00/- T-On Location 09:10
 (B) First Initial Flow 209 Jars — T-Started 10:32
 (C) First Final Flow 1161 Safety Joint 75.00/- T-Open 12:55
 (D) Initial Shut-In 1282 Circ Sub 50.00 T-Pulled 16:20
 (E) Second Initial Flow 1181 Hourly Standby — T-Out 20:48
 (F) Second Final Flow 1283 Mileage 38RT 58.90/- Comments Dropped Bar
 (G) Final Shut-In 1293 Sampler — Catwalk 1' off ground
 (H) Final Hydrostatic 2160 Straddle — Slopes toward truck

Ruined Shale Packer
 Ruined Packer
 Extra Copies
 Initial Open 30
 Initial Shut-In 45
 Final Flow 45
 Final Shut-In 90
 Day Standby
 Accessibility Catwalk 150.00
 Sub Total 1433.90 1383.90/-
 Total 1433.90
 MP/DST Disc't —

Approved By Jay L. McLeod Our Representative Mike Roberts

Trilobite Testing Inc. shall not be liable for damaged of any kind of the property or personnel of the one for whom a test is made, or for any loss suffered or sustained, directly or indirectly, through the use of its equipment, or its statements or opinion concerning the results of any test, tools lost or damaged in the hole shall be paid for at cost by the party for whom the test is made.



TRILOBITE TESTING INC.

1515 Commerce Parkway • Hays, Kansas 67601

Test Ticket

NO. 54700

Well Name & No. Beeson Trust 2-1 Test No. 2 Date 11-17-13
 Company Landmark Resources Inc Elevation 3104 KB 3094 GL
 Address 1616 S. Voss Rd STE 600 Houston TX 77057
 Co. Rep / Geo. Terry McLeod Rig Murkin 21
 Location: Sec. 1 Twp. 17 Rge. 34 Co. SCOTT State KS

Interval Tested 4466-4510 Zone Tested ~~FT. Scott~~ Altamont -
 Anchor Length 44 Drill Pipe Run ~~339~~ 4151 Mud Wt. 9.2
 Top Packer Depth 4462 Drill Collars Run 309 Vis 53
 Bottom Packer Depth 4466 Wt. Pipe Run φ WL 8.0
 Total Depth 4510 Chlorides 5000 ppm System LCM 2

Blow Description IF: Built to 1/3" Blow
IS: No Return Blow
FF: Built to 1/4" Blow
FS: No Return Blow

Rec	Feet of	%gas	%oil	%water	%mud
<u>15</u>	<u>gcmo</u>	<u>5</u>	<u>55</u>	<u>40</u>	
Rec	Feet of	%gas	%oil	%water	%mud
Rec	Feet of	%gas	%oil	%water	%mud
Rec	Feet of	%gas	%oil	%water	%mud
Rec	Feet of	%gas	%oil	%water	%mud

Rec Total 15 BHT 124 Gravity — API RW — @ — ° F Chlorides — ppm

(A) Initial Hydrostatic 2227 Test 1250.00 T-On Location 04:40
 (B) First Initial Flow 14 Jars — T-Started 05:46
 (C) First Final Flow 22 Safety Joint 75.00% T-Open 07:42
 (D) Initial Shut-In 1030 Circ Sub NC T-Pulled 11:12
 (E) Second Initial Flow 22 Hourly Standby — T-Out 13:16
 (F) Second Final Flow 31 Mileage 3BRT 58.90% Comments Catwalk?
 (G) Final Shut-In 1152 Sampler —
 (H) Final Hydrostatic 2166 Straddle —

Ruined Shale Packer —
 Ruined Packer —
 Extra Copies —
 Initial Open 30 Shale Packer —
 Initial Shut-In 45 Extra Packer —
 Final Flow 45 Extra Recorder —
 Final Shut-In 90 Day Standby —
 Accessibility 150.00% Sub Total 1383.90
 MP/DST Disc't —

Approved By Terry D. McLeod Our Representative Mike Roberts

Trilobite Testing Inc. shall not be liable for damaged of any kind of the property or personnel of the one for whom a test is made, or for any loss suffered or sustained, directly or indirectly, through the use of its equipment, or its statements or opinion concerning the results of any test, tools lost or damaged in the hole shall be paid for at cost by the party for whom the test is made.



TRILOBITE TESTING INC.

1515 Commerce Parkway • Hays, Kansas 67601

Test Ticket

NO. 54702

Well Name & No. Benson Trust 2-1 Test No. 3 Date 11-18-13
 Company Landmark Resources Inc. Elevation 3104 KB 3094 GL
 Address 1616 S. Voss Rd. STE 600 Houston TX 77057
 Co. Rep / Geo. Terry McLeod Rig Murkin 21
 Location: Sec. 1 Twp. 17 Rge. 34 Co. Scott State KS

Interval Tested 4555-4730 Zone Tested Myric - Ft. Scott - Johnson
 Anchor Length 175 Drill Pipe Run 4237 Mud Wt. 9.2
 Top Packer Depth 4551 Drill Collars Run 309 Vis 58
 Bottom Packer Depth 4555 Wt. Pipe Run 0 WL 9.6
 Total Depth 4730 Chlorides 3300 ppm System LCM 2

Blow Description IF: BOB IN 6 Min
IS: Return Blow Built to 5"
FF: BOB IN 8 Min
FS: Return Blow Built to 8"

Rec	Feet of	%gas	%oil	%water	%mud
<u>0</u>	<u>Feet of GIP = 496'</u>	<u>100</u>			
<u>62</u>	<u>Feet of MCO</u>		<u>50</u>	<u>50</u>	
<u>62</u>	<u>Feet of geom</u>	<u>2</u>	<u>8</u>	<u>90</u>	
<u>310</u>	<u>Feet of mcgo mcgo</u>	<u>45</u>	<u>50</u>	<u>5</u>	
<u>62</u>	<u>Feet of mcgo ocm</u>		<u>85</u>	<u>15</u>	
<u>248</u>	<u>Feet of ocm</u>		<u>15</u>	<u>85</u>	

Rec Total 743 BHT _____ Gravity _____ API RW _____ @ _____ °F Chlorides _____ ppm

(A) Initial Hydrostatic 2336 Test 1250.00/- T-On Location 07:00
 (B) First Initial Flow 136 Jars _____ T-Started 08:10
 (C) First Final Flow 223 Safety Joint 75.00/- T-Open 10:18
 (D) Initial Shut-In 1253 Circ Sub NC T-Pulled 13:48
 (E) Second Initial Flow 247 Hourly Standby _____ T-Out 16:31
 (F) Second Final Flow 304 Mileage 38RT = 58.90/- Comments Catwalk
 (G) Final Shut-In 1258 Sampler 117.80 loaded tools 11/18 22:30
 (H) Final Hydrostatic 2228 Straddle _____ Ruined Shale Packer _____
 Shale Packer _____ Ruined Packer _____
 Extra Packer _____ Extra Copies _____
 Extra Recorder _____ Sub Total 0
 Day Standby _____ Total 1442.80
 Accessibility 15.00/- MP/DST Disc't _____
 Sub Total 1442.80 1389.90/-

Approved By Terry McLeod Our Representative Mike Roberts

Trilobite Testing Inc. shall not be liable for damaged of any kind of the property or personnel of the one for whom a test is made, or for any loss suffered or sustained, directly or indirectly, through the use of its equipment, or its statements or opinion concerning the results of any test, tools lost or damaged in the hole shall be paid for at cost by the party for whom the test is made.