



Office (620) 588-4250 212 Main St. • P.O. Box 215 • Clarin, KS 67525 Home (620) 587-3444
 James C. Musgrove
 Petroleum Geologist

GEOLOGIST'S REPORT

DRILLING TIME AND SAMPLE LOG

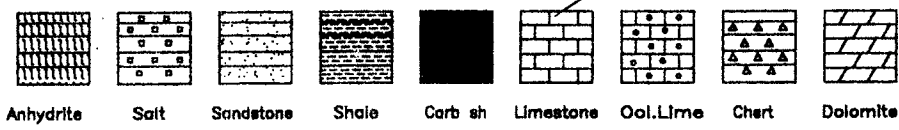
COMPANY <u>Grady Building Corp</u>	ELEVATIONS
LEASE <u>Armbruster #5</u>	KB <u>2299</u>
FIELD <u>Dist. 57 North</u>	DF <u>2290</u>
LOCATION <u>E2-NE-NW-SE(2310 B&L+62074)</u>	GL <u>2290</u>
SEC <u>17</u> TWP <u>12</u> RGE <u>30</u>	Measurements Are All From <u>KB</u>
COUNTY <u>Ellis</u> STATE <u>KS</u>	
CONTRACTOR <u>Sullivan #9</u>	CASING <u>262'</u>
SPUD <u>11/21/2013</u> COMP <u>11/10/2013</u>	SURFACE <u>8520'</u>
RTD <u>1090</u> LTD <u>4100</u>	PRODUCTION <u>57116-4137</u>
MUD UP <u>3200</u> TYPE MUD <u>Displaced</u>	ELECTRICAL SURVEYS By <u>Primer</u> <u>DZL, GUYCO, MICHAEL, SAMS</u>
SAMPLES SAVED FROM <u>3300</u> TO <u>TO</u>	
DRILLING TIME KEPT FROM <u>3300</u> TO <u>TO</u>	
SAMPLES EXAMINED FROM <u>3300</u> TO <u>TO</u>	
GEOLOGICAL SUPERVISION FROM <u>3300</u> TO <u>TO</u>	
GEOLOGIST ON WELL <u>Clint Musgrove & James C. Musgrove</u>	
FORMATION TOPS	LOG
<u>Galudite</u> <u>1668</u> <u>1631</u>	
<u>East anhydrite</u> <u>1714</u> <u>1585</u>	
<u>Lechner</u> <u>1871</u> <u>1878</u>	
<u>Tarranta</u> <u>1891</u> <u>1792</u>	
<u>Hansing</u> <u>1808</u> <u>1809</u>	
<u>Base Kansas City</u> <u>1882</u> <u>1555</u>	
<u>Wernston</u> <u>1904</u> <u>1809</u>	
<u>Comlawick</u> <u>1920</u> <u>1851</u>	
<u>Gubavick</u> <u>1981</u> <u>1882</u>	
<u>RTD</u> <u>4040</u> <u>174</u>	

EMARKS

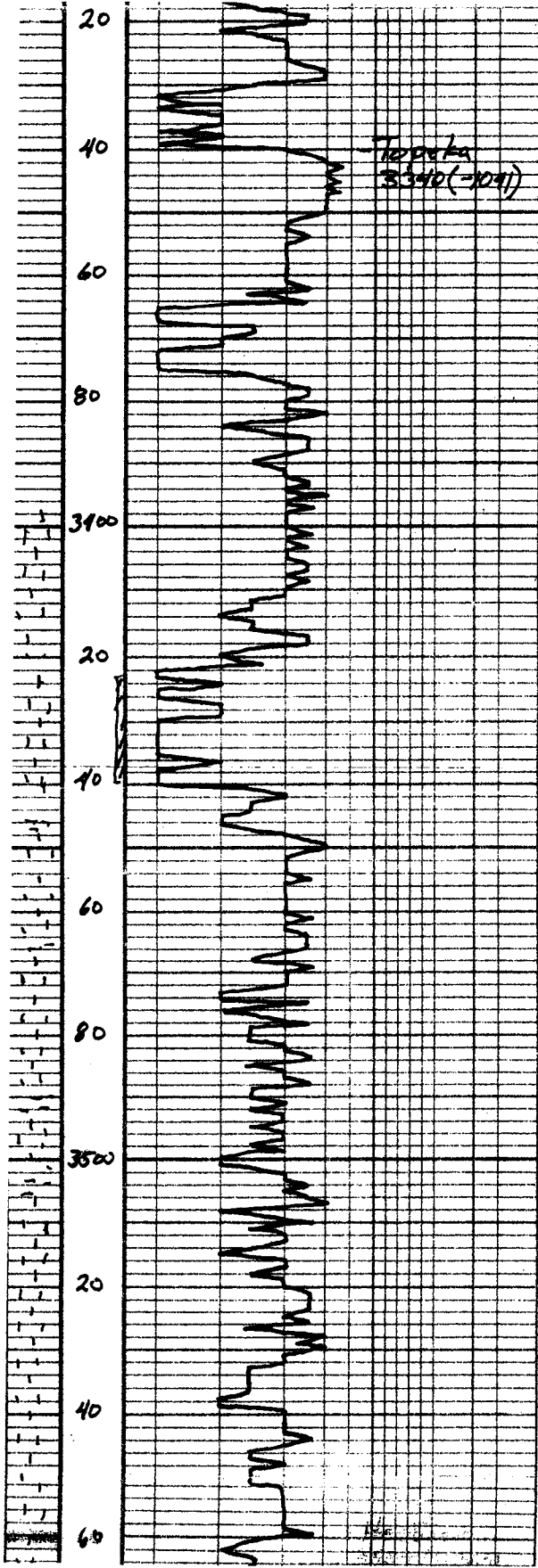
Recommendations; 5 1/2" products in casing was set & cemented on the Armbruster #5.

Respectfully submitted,
James C. Musgrove & Clint Musgrove
Petroleum Geologists

LEGEND



LITHOLOGY	DEPTH	DRILLING TIME (Logarithmic Scale)		SAMPLE DESCRIPTIONS	REMARKS
		5	10		
	3300				



-2299KB-

LS, cm, Pass, Fil, scatter

LS, gr, scatter Pass
spotty brown

LS, cm, Fil, scatter
M/S

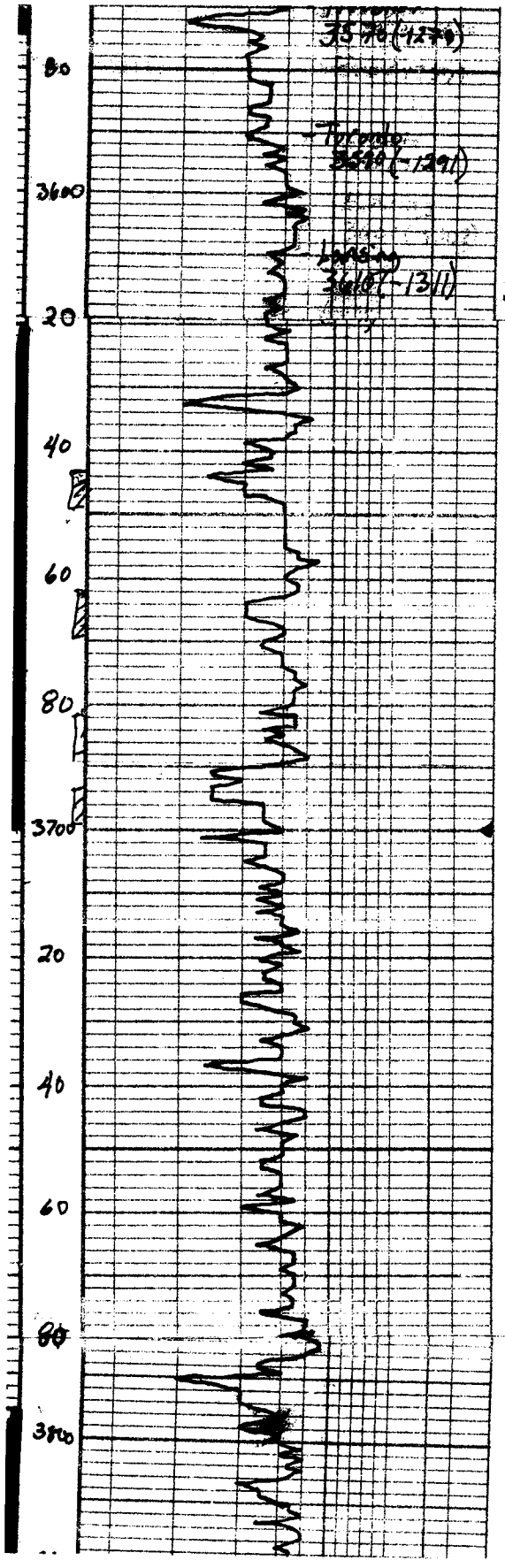
LS, gr, cool, brown, green

LS, cm, Fil, dy M/S

SS

AA

LS, wh cm, Pass, Fil
dy M/S



D1K-2476 Sh	
LS, wh, chky, w/g st.	
LS, wh, fass, slightly ool Very slender 280	
LS, wh, slightly ool/fass Very faint odor 230	
LS, wh, D'y fat, n/s	Dst #1 3620-3700 30-30-45-60 Blow; strong (Bob 14 min)
LS, wh, fass, pear, o n/s	2nd opening; strong (Bob 19 min)
chky LS	Recovery; 75' gas in pipe 50' heavy oil cut muddy water (45% oily 20% water, 35% mud) 130' muddy water
LS, wh, ool, fat, faint odor sto	pressures; 5510 559 ps 55. p 538 "
LS, wh, ool, ool, n/s needed 37, 36	55 p 31-100 " 55 p 105-114 " 15M 1769-1766'
LS, wh, D'y, pear, o n/s	
LS, wh, D'y fat n/s	
LS, wh, chky, scrub fg of light brown color	
LS, gr, tan, fass, chky, D'y	
LS, wh, fat, light stain n/s	Dst #2 3796-3830 30-30-30-30 Blow; fair (4") 2nd opening; fair (5")

