



**TRILOBITE
TESTING, INC**

DRILL STEM TEST REPORT

Strata Exploration Inc.

13-27s-20w Kiowa Ks.

P.O.Box 401
Fairfield Il.62837

Zimmerman A#1-13

Job Ticket: 51790

DST#: 2

ATTN: Jon Christensen

Test Start: 2013.12.06 @ 04:55:41

GENERAL INFORMATION:

Formation: **Cherokee / Miss.**
 Deviated: No Whipstock: ft (KB)
 Time Tool Opened: 06:53:26
 Time Test Ended: 11:50:11
 Interval: **4786.00 ft (KB) To 4864.00 ft (KB) (TVD)**
 Total Depth: 4864.00 ft (KB) (TVD)
 Hole Diameter: 7.79 inches Hole Condition: Fair
 Test Type: Conventional Bottom Hole (Reset)
 Tester: Gary Pevoteaux
 Unit No: 56
 Reference Elevations: 2281.00 ft (KB)
 2268.00 ft (CF)
 KB to GR/CF: 13.00 ft

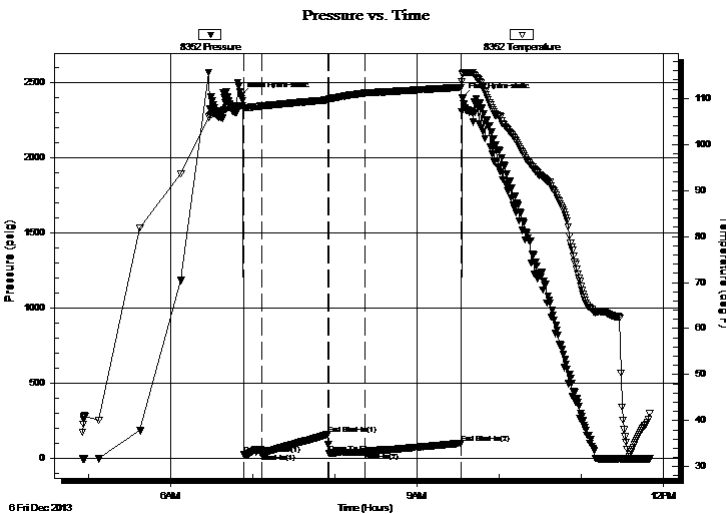
Serial #: 8352

Inside

Press@RunDepth: 41.32 psig @ 4787.00 ft (KB) Capacity: 8000.00 psig
 Start Date: 2013.12.06 End Date: 2013.12.06 Last Calib.: 2013.12.06
 Start Time: 04:55:46 End Time: 11:50:10 Time On Btm: 2013.12.06 @ 06:51:26
 Time Off Btm: 2013.12.06 @ 09:32:56

TEST COMMENT: IF:Weak blow . 1 - 1 1/4".
 IS:No blow .
 FF:Weak blow . 1 1/2 - 2".
 FS:No blow .

PRESSURE SUMMARY



Time (Min.)	Pressure (psig)	Temp (deg F)	Annotation
0	2410.35	108.40	Initial Hydro-static
2	25.39	107.88	Open To Flow (1)
15	34.44	108.34	Shut-In(1)
64	160.19	109.69	End Shut-In(1)
64	32.81	109.82	Open To Flow (2)
91	41.32	111.18	Shut-In(2)
161	101.55	112.42	End Shut-In(2)
162	2400.12	115.29	Final Hydro-static

Recovery

Length (ft)	Description	Volume (bbl)
40.00	GOCM 4%g 4%o 92%m	0.20
0.00	60 ft. of GIP	0.00

* Recovery from multiple tests

Gas Rates

Choke (inches)	Pressure (psig)	Gas Rate (Mcf/d)



**TRILOBITE
TESTING, INC**

DRILL STEM TEST REPORT

FLUID SUMMARY

Strata Exploration Inc.

13-27s-20w Kiowa Ks.

P.O.Box 401
Fairfield Il.62837

Zimmerman A#1-13

Job Ticket: 51790

DST#: 2

ATTN: Jon Christensen

Test Start: 2013.12.06 @ 04:55:41

Mud and Cushion Information

Mud Type: Gel Chem

Cushion Type:

Oil API:

deg API

Mud Weight: 9.00 lb/gal

Cushion Length:

ft

Water Salinity:

4200 ppm

Viscosity: 60.00 sec/qt

Cushion Volume:

bbbl

Water Loss: 8.39 in³

Gas Cushion Type:

Resistivity: 0.00 ohm.m

Gas Cushion Pressure:

psig

Salinity: 4200.00 ppm

Filter Cake: 0.20 inches

Recovery Information

Recovery Table

Length ft	Description	Volume bbl
40.00	GOCM 4%g 4%o 92%m	0.197
0.00	60 ft. of GIP	0.000

Total Length: 40.00 ft Total Volume: 0.197 bbl

Num Fluid Samples: 0

Num Gas Bombs: 0

Serial #: none

Laboratory Name:

Laboratory Location:

Recovery Comments:

Pressure vs. Time

