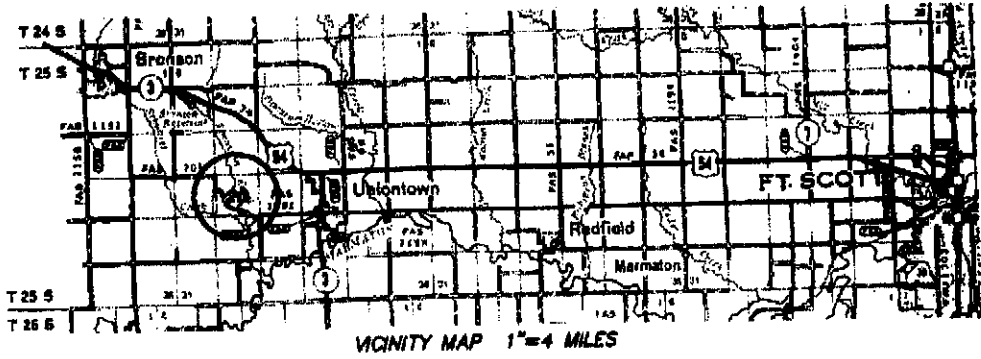
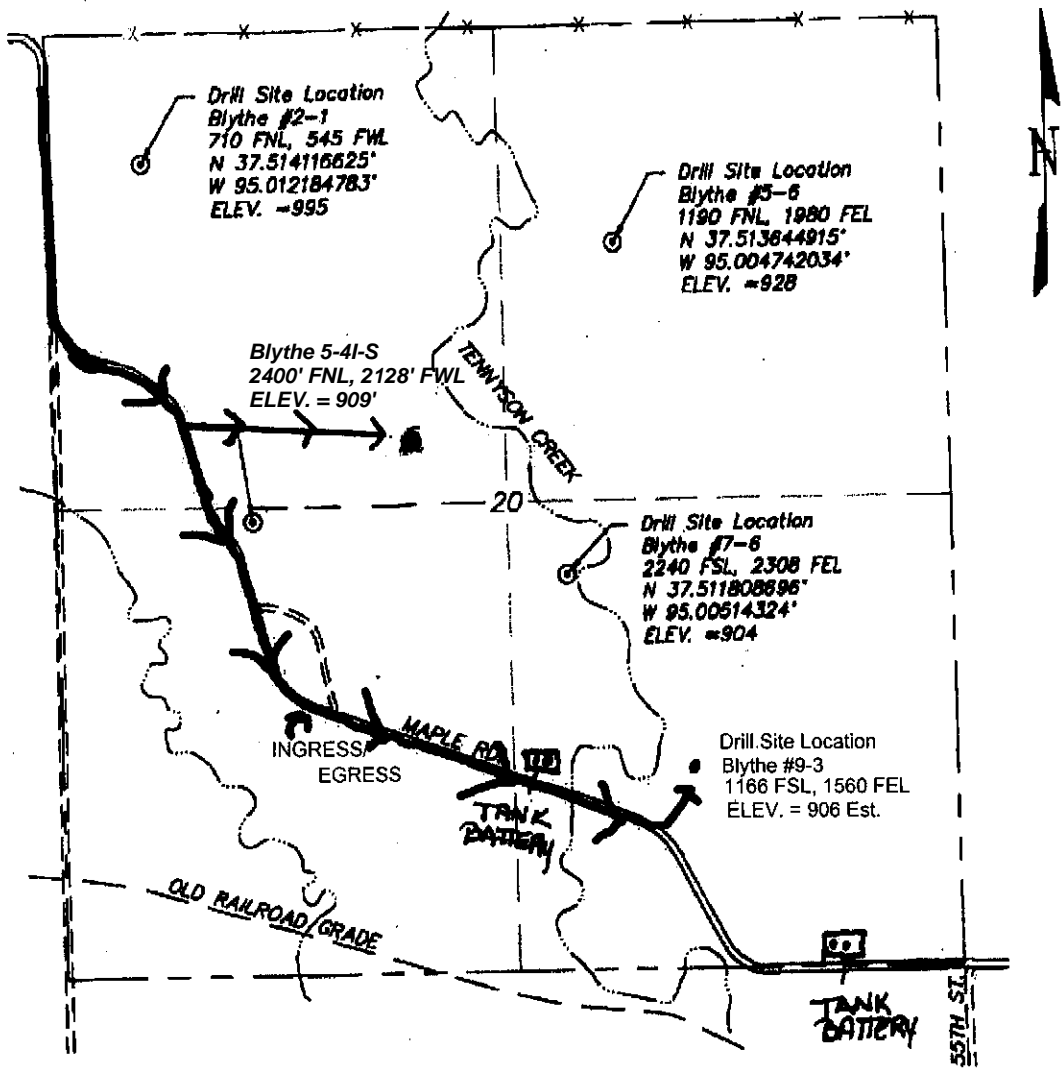


S:\PROJECTS\1303000000 MESA - BLYTHE STAKEOUT - 3594100000 MESA S.U.O.M.G., SEC. 20, 11/14/2013 4:11:50 PM



Approximate section lines were determined using the normal standard of care of oilfield surveyors practicing in the state of Kansas. The section corners, which establish the precise section lines, were not necessarily located, and the exact location of the drill site in the section is not guaranteed. Therefore, the operator securing this service and accepting this plat and all other parties relying thereon agree to hold Agricultural Engineering Associates, Inc., its officers and employees harmless from all losses, costs and expenses and said entities released from any liability from incidental or consequential damages.



Agricultural Engineering Associates
Uniontown, KS 66779
820-766-1000



GRAND MESA OPERATING COMPANY
BLYTHE LEASE
SECTION 20, T25S, R22E
BOURBON COUNTY, KANSAS

Date:	Drawn By:	Scale:	Sheet:
13 Nov, 2013	BCM	1"=1000'	1 of 1