

ADVANTAGE ELEVATIONS

OIL FIELD SURVEYORS

BOX 8604 - PRATT, KS 67124
(620) 672-6491

116141

INVOICE NO.

N-10 EXPLORATION LLC

OPERATOR

3

NO.

MEDICINE RIVER RANCH E

FARM

Barber

COUNTY

22

S

34s

T

11w

R

C SW NW SE

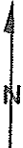
LOCATION

ELEVATION: 1325' GR

N-10 EXPLORATION LLC

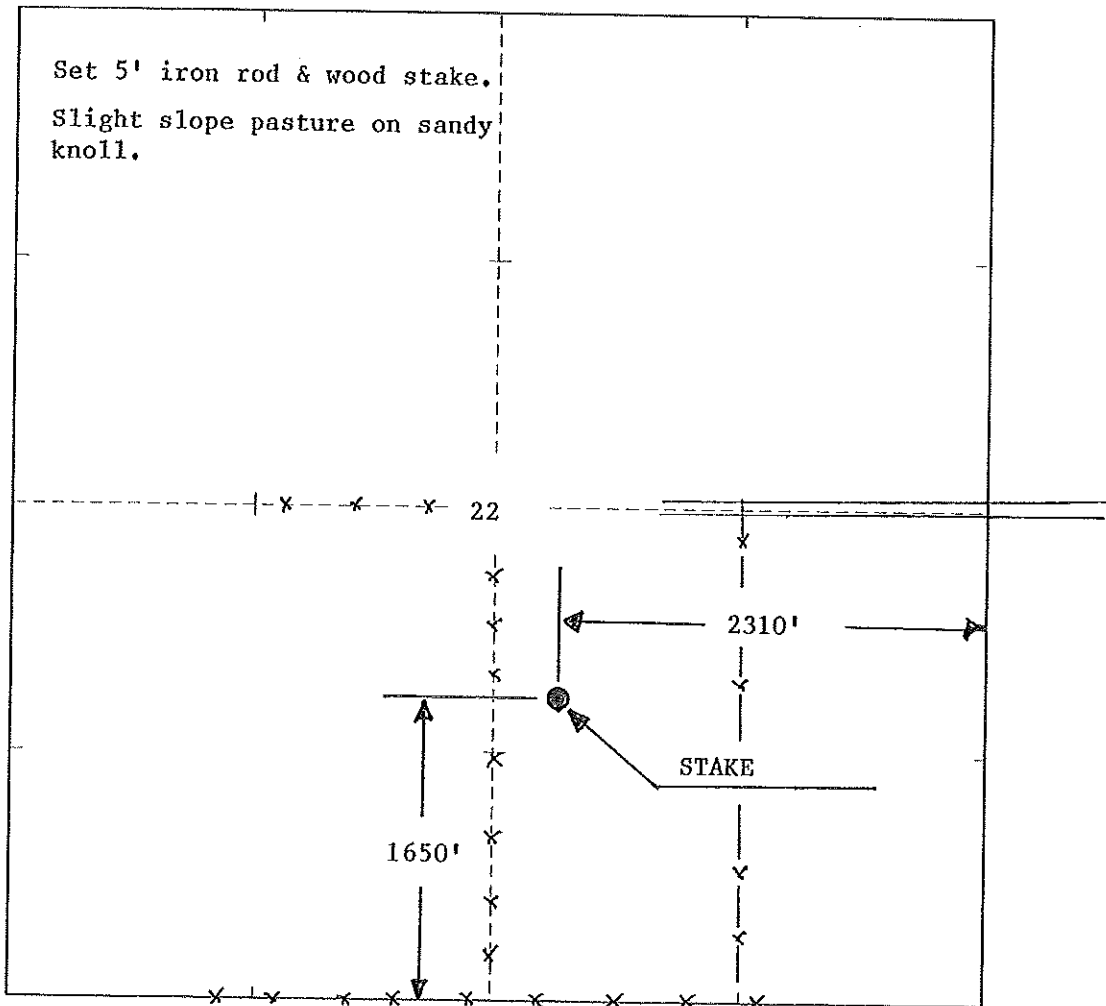
PO Box 195

Attica, KS 67009-0105



AUTHORIZED BY: Randy Newberry

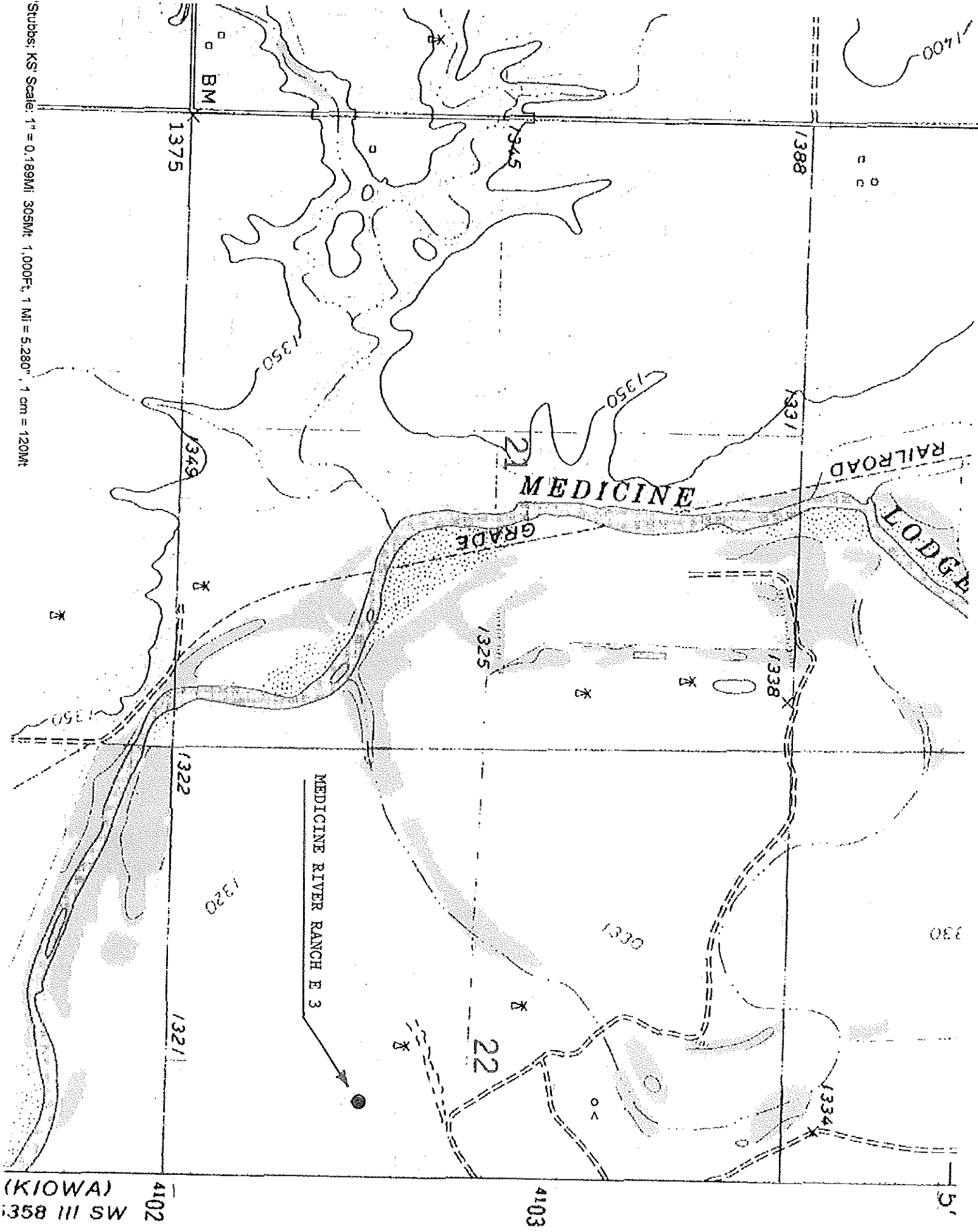
SCALE: 1" = 1000'



1/22/14

DATE STAKED: _____

Stubs: KS' Scale: 1" = 0.189MI 305M; 1.000F; 1 MI = 5.280" 1 cm = 120M



(KIOWA)
1358 III SW

4102

4103

1358