



TriPower Resources

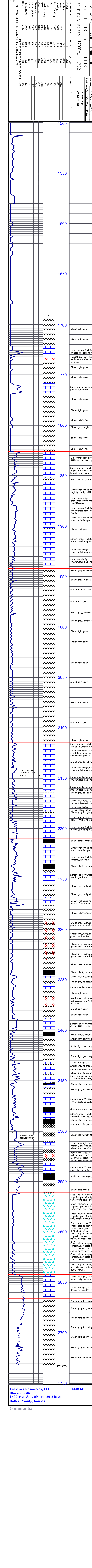
GEOLOGICAL REPORT

DRILLING TIME & SAMPLE LOG

REPORT PREPARED BY FRANK S. HINZ/DEEG/CRJ
 AP# : 15-015-24(004)

COMPANY	TriPower Resources, LLC	ELEVATION	K.B. 1442
LEASE	Bluestem #8	D.F.	
FIELD	Joseph Southeast	G.L.	1434
LOCATION	1599' FNL & 1709' FEL	DEPTH MEASURED FROM KB	
SFC	20 TMSR 24S RCF 5E	Log Drilling	<input checked="" type="checkbox"/>
COUNTY	Butler STATE Kansas	Surface 8.508 (219' W/1253X)	
CONTRACTOR	Guillick Drilling, Inc.	Production 5.172 (2270' W/1253X)	
SPUD	11-1-13 COMP 11-4-13	Electric Logs	<input checked="" type="checkbox"/>
SAMPLES SAVED FROM	1700' TO 1732'	CHIT/PT/LIT	

FORMATION	SAMPLE	E LOG	DATUM	A. ELOG	B.	C.
Ordred	1510		-68			
Hedhner	1545		-103			
Brown	1735		-316			
Lansing	1826		-382			
Base Lansing	1942		-500			
Stark	2210		-768			
Hushpuckney	2235		-793			
BKC	2252		-808			
Altamont	2345		-902			
Cherokee	2488		-1044			
Mississippian	2561		-1118			
Kinderhook	2666		-1223			
RTD	2732		-1520			
TriPower	2750		-1538			



1500

1550

1600

1650

1700
 Shale: light gray
 Shale: light gray
 Limestone: off white to light brown, fine to medium crystalline, poor to no intercrystalline porosity, no show
 Sandstone: gray, fine subrounded grains, well sorted, well cemented with calcite, fair intergranular porosity, no show
 Shale: light gray

1750
 Shale: light gray

1800
 Limestone: gray, fine crystalline, dense, little visible porosity, no show
 Shale: light gray
 Shale: light gray
 Shale: light gray
 Shale: gray, slightly arenaceous
 Shale: light gray
 Shale: light gray

1850
 Limestone: light brown, coarsely crystalline, dense, little visible porosity, no show
 Limestone: off white to beige, medium crystalline, poor to fair intercrystalline porosity, spotted residual stain, trace bright fluorescence, no live show, no odor
 Shale: red to green to gray
 Limestone: off white to light gray, medium crystalline, slightly chalky, little visible porosity, no show
 Limestone: beige to gray, medium crystalline, fair to good intercrystalline porosity, no show, slightly fossiliferous
 Limestone: off white to beige, medium crystalline, little visible porosity, no show, fossiliferous with fusulinids
 Limestone: off white to gray, medium crystalline, poor intercrystalline porosity, no show

1900
 Shale: dark gray
 Limestone: off white to gray, medium crystalline, poor intercrystalline porosity, no show
 Limestone: beige to gray, medium crystalline, poor intercrystalline porosity, no show
 Limestone: beige to gray, medium crystalline, poor intercrystalline porosity, no show

1950
 Shale: gray to greenish gray
 Shale: gray, slightly calcareous
 Shale: gray, arenaceous, no show
 Shale: light gray
 Shale: gray, arenaceous, no show
 Shale: gray, arenaceous, no show

2000
 Shale: light gray
 Shale: light gray
 Shale: light gray

2050
 Shale: light gray
 Shale: light gray

2100
 Shale: light gray
 Shale: light gray
 Shale: light gray

2150
 Shale: light gray
 Limestone: off white to beige, medium crystalline, poor to fair intercrystalline porosity, no show
 Limestone: gray to dark gray, medium to coarsely crystalline, very poor intercrystalline porosity, no show, fair amount pyrite
 Shale: gray to light green
 Limestone: beige, medium crystalline, poor to trace fair intercrystalline porosity, no show
 Limestone: beige, medium crystalline, poor to trace fair intercrystalline porosity, no show
 Limestone: beige, medium crystalline, poor to trace fair intercrystalline porosity, no show
 Shale: gray to light green
 Limestone: beige to light brown, densely oolitic, poor to fair interoolitic porosity, some oolitic, no show
 Limestone: beige to light brown, densely oolitic, poor to fair interoolitic porosity, some oolitic, no show
 Shale: gray to light green
 Limestone: gray to beige, medium crystalline, most dense, little visible porosity, no show
 Limestone: off white, medium crystalline fair to good intercrystalline porosity, no show

2200
 Shale: black, carbonaceous
 Limestone: off white to gray, medium crystalline, fair intercrystalline porosity, some slightly chalky, no show
 Limestone: off white, medium crystalline, little visible porosity, no show

2250
 Shale: black, carbonaceous
 Limestone: off white to beige, fine to medium crystalline, fair to good intercrystalline porosity, no show
 Shale: gray to light gray
 Shale: gray to light gray
 Limestone: beige to light brown, oolitic, some oolitic, poor to fair interoolitic porosity, no show
 Shale: light to trace dark gray, slightly arenaceous
 Shale: gray, w/much Sandstone: gray, fine subrounded grains, well sorted, highly argillaceous, no show
 Shale: gray, w/much Sandstone: gray, fine subrounded grains, well sorted, highly argillaceous, no show
 Shale: gray, w/much Sandstone: gray, fine subrounded grains, well sorted, highly argillaceous, no show
 Shale: gray, w/much Sandstone: gray, fine subrounded grains, well sorted, highly argillaceous, no show
 Shale: gray to dark gray
 Shale: black, carbonaceous
 Limestone: brownish gray to gray, dense, no show
 Shale: gray to dark gray
 Limestone: brownish gray to gray, dense, no show
 Shale: light gray
 Sandstone: light gray, fine grained, well sorted, well cemented w/calcite, fair intergranular porosity, no show
 Shale: light gray
 Shale: light gray
 Limestone: off white to light brown, coarsely crystalline, dense, little visible porosity, no show
 Shale: black, carbonaceous
 Shale: light gray to gray
 Shale: light gray to gray
 Limestone: gray to brownish gray, dense, no show
 Shale: gray to greenish gray
 Limestone: gray to brownish gray, coarsely crystalline, little visible porosity, no show
 Shale: black, carbonaceous
 Shale: gray to dark gray, pyritic
 Limestone: off white to gray, coarsely crystalline, dense, little visible porosity, no show
 Shale: black, carbonaceous
 Limestone: off white to light brown, coarsely crystalline, no visible porosity, no show
 Shale: black, carbonaceous
 Shale: light to greenish gray
 Shale: light green to gray to black

2300
 Limestone: light brown to beige, medium to coarsely crystalline, dense, little visible porosity, no show
 Shale: gray, pyritic
 Sandstone: gray, fine subangular grains, well sorted, well cemented w/calcite, poor intergranular porosity, highly argillaceous, no show
 Shale: dark gray to reddish brown
 Limestone: off white to light brown, medium to coarsely crystalline, dense, little visible porosity, no show
 Shale: brownish gray to black, pyritic
 Shale: blue green

2350
 Chert: white to off white, 60% tripolitic, 35% fresh, good tripolitic porosity, light even stain, slight show free oil, very strong odor, bright fluorescence in 65% of 2580' spl
 Chert: white to off white, 90% tripolitic, 10% fresh, good tripolitic porosity, light even stain, slight show free oil, very strong odor, bright fluorescence in 90% of 2600' spl
 Chert: white to off white, 50% tripolitic, 50% fresh, good tripolitic porosity, light even stain, slight show free oil, very strong odor, bright fluorescence in 50% of 2600' spl
 Chert: white to off white to dull gray, 45% tripolitic, 55% fresh, poor to fair tripolitic porosity, spotted stain, slight show free oil, good odor, bright fluorescence in 45% of 2610' spl
 Chert: white to off white to bluish gray, fresh, trace tripolitic, no visible porosity, scattered spotted stain, yellow fluorescence in 25% of 2620' sample, fair odor
 Chert: white to opaque white, fresh, sharp, no visible porosity, no visible show, pale fluorescence in 10% of 2630' sample, much slough from connection (dark gray shale), extremely faint odor
 Chert: white to opaque white, fresh, sharp, no visible porosity, no visible show, pale fluorescence in 5% of 2640' sample, no odor
 Chert: white to opaque white, fresh, sharp, no visible porosity, no visible show, no fluorescence in the 2650' sample

2400
 Limestone: gray to beige, coarsely crystalline, dense, no porosity, no show
 Limestone: gray to beige, medium to coarsely crystalline, dense, no porosity, no show
 Shale: gray to greenish gray, pyritic
 Shale: gray to greenish gray, pyritic
 Shale: dark gray to greenish gray to red
 Shale: gray to dark gray
 Shale: dark gray to greenish gray
 Shale: gray to dark gray
 Shale: light to dark gray

2450
 Shale: light to dark gray

2500
 RTD 2732

2550
 RTD 2732

2600
 RTD 2732

2650
 RTD 2732

2700
 RTD 2732

2750
 RTD 2732

Brown Lime 1758 -316

Lansing 1826 -384

Base Lansing 1942 -500

KC 2115 -673

Stark 2210 -768

Hushpuckney 2235 -793

BKC 2252 -810

Altamont 2345 -903

Cherokee 2488 -1046

TFB @ 2498'

Mississippian 2561 -1119

Miss Lime 2642 -1200

Kinderhook 2666 -1224

vis 39 wt 9.1 lcm 2#

vis 45 wt 9.2 lcm 2#

