



Musgrove

**PETROLEUM
CORPORATION**
Clayton, Kansas

NOTES

Company: Blueridge Petroleum Petroleum Corporation

Lease: Beck # 1-17

Field: Wildcat

Location: NE-SE-NW-NE (803' FNL & 1559' FEL)

Sec: 17 Twsp: 20S Rge: 25W

County: Ness State: Kansas

KB: 2481' GL: 2472'

API #: 15-135-25705-00-00

Contractor: Southwind Drilling, Co. (Rig # 8)

Spud: 12/12/2013 Comp: 12/20/2013

RTD: 4610' LTD: 4611'

Mud Up: 3800' Type Mud: Chemical

Samples Saved From: 3800' to RTD
 Drilling Time Kept From: 3900' to RTD
 Samples Examined From: 3900' to RTD
 Geological Supervision From: 3900' to RTD
 Geologist on Well: Jim Musgrove & Wyatt Urban

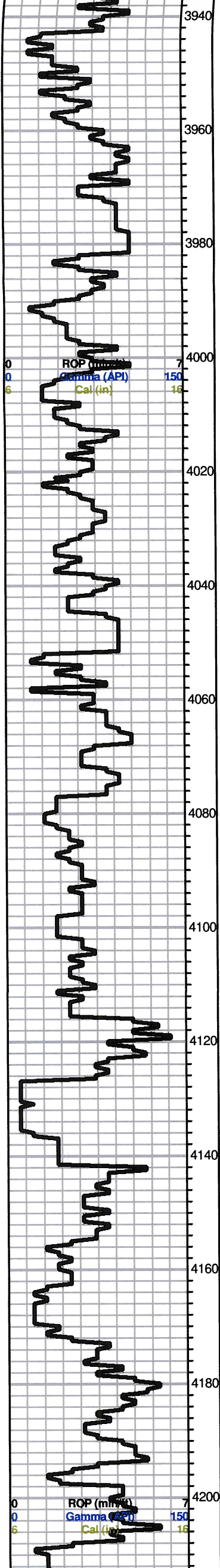
Surface Casing: 8 5/8" @ 223'

Electronic Surveys: Nabors Completion; CDL/CNL, DIL, MEL

Blueridge Petroleum Corporation well comparison sheet

DRILLING WELL					COMPARISON WELL			
Blueridge Petro- #1-17 Beck					Palomino Petroleum-#1 Beck			
NE-SE-NW-NE					SE-NW-NW-NE			
17-20S-25W					17-20S-25W			
2481 KB					2480 KB			Structural Relationship
Formation	Sample	Sub-Sea	Log	Sub-Sea	Log	Sub-Sea	Sample	Log
Anhydrite	1853	628			1787	762	-134	
B. Anhydrite	1885	596			1768	712	-116	
Heebner	3838	-1357	3837	-1356	3833	-1353	-4	-3
Lansing	3879	-1398	3876	-1395	3877	-1397	-1	2
BKC	4236	-1755	4238	-1757	4242	-1762	7	5
Pawnee	4351	-1870	4350	-1869	4348	-1868	-2	-1
Ft. Scott	4409	-1928	4402	-1921	4405	-1925	-3	4
Cherokee Sh	4425	-1944	4432	-1951	4429	-1949	5	-2
Miss	4503	-2022	4508	-2027	4502	-2022	0	-5
RTD	4610	-2129			4605	-2125		
LTD	4611	-2130			4607	-2127		





LS, tan, highly foss, sparry calcite cement, few chert, gray foss/ool cherty

LS, tan, foss, dense,

Sh. gray/ black

LS, white to cream, dolomitic, suc. w/ white suc. dense dolomitic

Gray/ greenish shale

LS, white to cream FXL, foss, chalky, cherty, with amber / gray, opaque chert

A/A, trace dolomitic w/ shale

LS, tan, white, chalky, few foss, and amber/gray to white foss, chert

LS, gray to white, oom, good oom porosity, barren

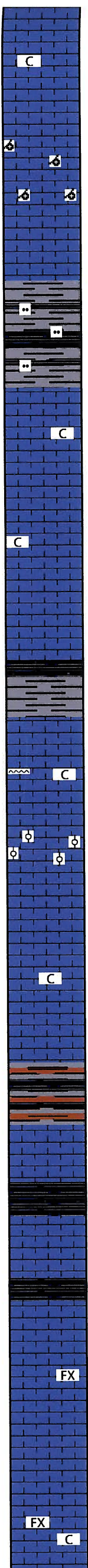
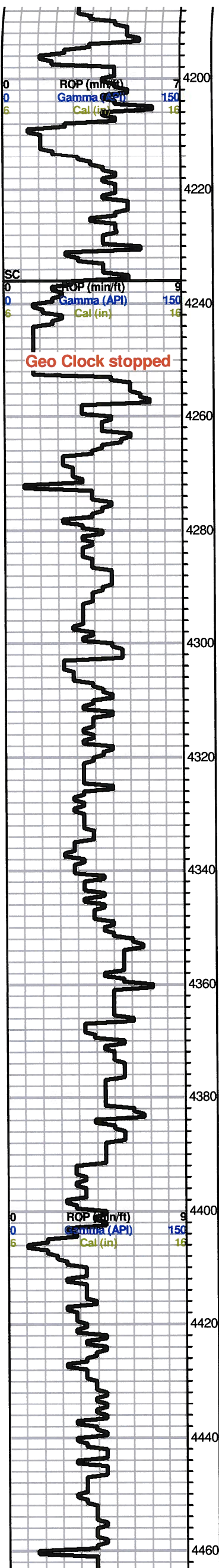
Stark 4155 (-1674)
Black carb shale

LS, tan ool, FXL, dense, poor visible porosity

LS, gray to white, foss, chalky, poor visible porosity, no shows

0	Total Gas (units)	100
0	C1 (units)	100
0	C2 (units)	100
0	C3 (units)	100
0	C4 (units)	100

0	Total Gas (units)	100
0	C1 (units)	100
0	C2 (units)	100
0	C3 (units)	100
0	C4 (units)	100



LS, gray to white, foss, chalky, poor visible porosity, no shows

A/A, few sub oom, scattered porosity, no show

BKC 4236 (-1755)

Gry/greenish, shale, silty

LS, gray to white, chalky, poor scattered porosity, no shows

Marmaton 4270 (-1789)

LS, white to gray, chalky, few foss, poor visible porosity, no shows

LS, A/A

Gray/ limey, black shale

LS, gray to white, FXL, chalky, cherty, dense

LS, tan, finely ool, poor visible porosity, no shows

PAWNEE 4351 (-1870)

LS, tan, gray, dense, chalky, few green sh.

gray, mar, black, shale, green limey

Ft. Scott 4409 (-1928)

Slug, black carb shale.

Cherokee Sh. 4425 (-1944)

Black carb shale

LS, tan to brown, mott, FXL, dense, few foss, poor visible porosity, no show

LS, A/A, slightly chalky in parts, poor visible porosity, no shows

0	Total Gas (units)	100
0	C1 (units)	100
0	C2 (units)	100
0	C3 (units)	100
0	C4 (units)	100

0	Total Gas (units)	100
0	C1 (units)	100
0	C2 (units)	100
0	C3 (units)	100
0	C4 (units)	100

