

Saman Sharfaie Petroleum Geologist

GEOLOGIST'S REPORT DRILLING TIME AND SAMPLE LOG

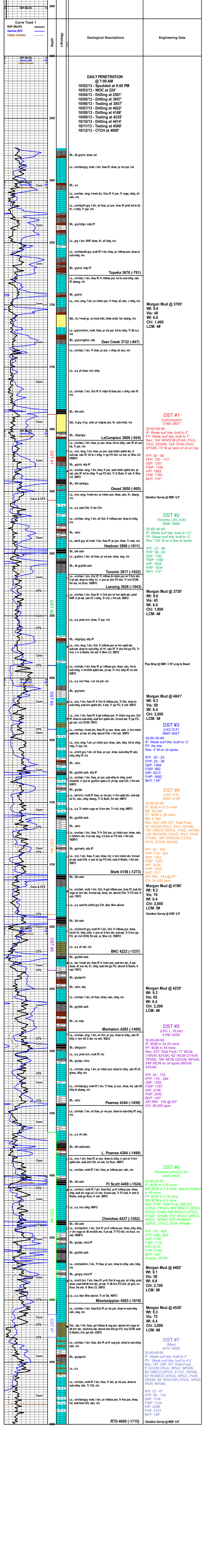
COMPANY: Martin Drilling Co., Inc.
ADDRESS: Abell Ranch #2-5
FIELD: Wildcat
LOCATION: 1376' ESL & 406' FEL
SEC: 25 TWP: 12S RGE: 31W
COUNTY: Gove STATE: Kansas
CONTRACTOR: Martin Drilling #21
SPUD: 10/02/13 COMP: 10/13/13
MUD UP: 4600' LTD: 4599'
TYPE MUD: Chemical

Table with 3 columns: Formation, Sample Tops, E-log Tops. Rows include Abell, Base, Helderberg, etc.

REMARKS Due to fair to good shows of oil in multiple pay zones and positive DST results, it is recommended and agreed upon by all parties that production casing be set to further evaluate this well.

Respectfully Submitted, Saman Sharfaie Petroleum Geologist

API #15-063-22142, Tops have been adjusted to electric logs



Engineering Data for DST #1-7, including IFP, FFP, ISIP, IHP, FHP, BHT, and LCM values for different depths.