

COMPANY: Mikal Oil LLC
WELL: Gosser # 2-14
FIELD: Wildcat

LOCATION: 1451' FNL + 649' FEL
SEC. 14 TWP. 15S R0E. 17W
COUNTY: Rooks
STATE: Kansas

OPERATOR: Mikal Oil LLC
CONTRACTOR: Discovery Drilling, King #2
Casing Record: 11-13
SUNF: 85% @ 223' PROD: 5 1/2" @ 3580'

PRODUCTION: LKc
ELEVATION: KB 2001
DB: 1943

Drilling Measured From: KB
Sample Speed From: 2900 to: TD
Drilling Time From: 2900 to: TD
Sample Examined From: 2900 to: TD

Geological Interpretation: Marc Downing
Wellbore Geologist: Marc Downing
Electrical Surveys: Nabors

TOTAL DEPTH DRILLERS: 3585'
TOTAL DEPTH LOG: 3581'

FORMATION	SAMPLE TOP	ELECTRIC LOG TOP	SURF SEA POSITION	STRUCTURAL POSITION
Top Anhydrite	1231	1269	+770	+4
Base Anhydrite	2914	2915	+732	NA
Tapoka	3134	3134	-914	NA
HEEBNER	3158	3158	-1134	+15
Taranto	3182	3182	-1181	NA
LKC	3182	3182	-1181	+14
BKC	3425	3425	-1429	NA
Arbuckle	3500	3500	-1500	+14

REFERENCE WELL FOR STRUCTURE: Hayward Drilling Co.
SE-SE-N/E Sec. 14-15-17W

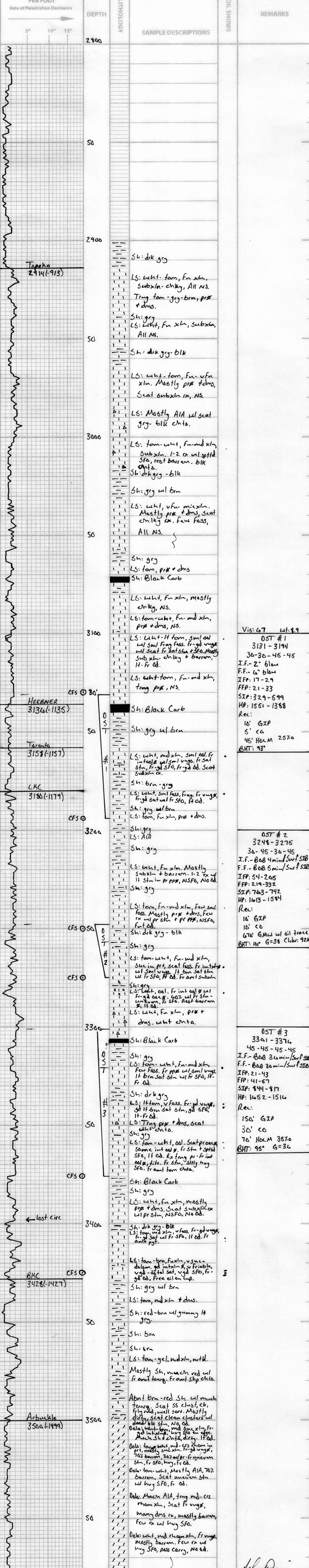
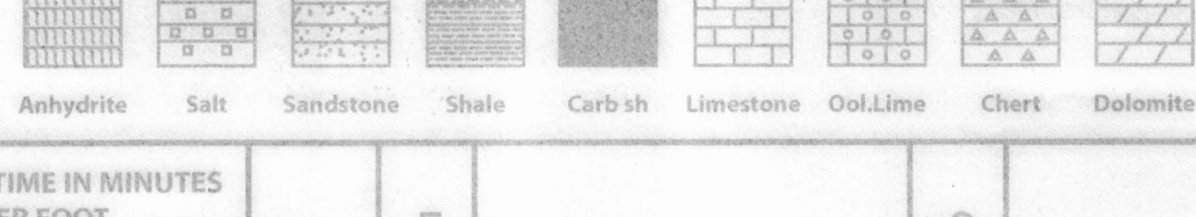
DRILL STEM TESTS

NO.	INTERVAL	DEPTH	ESP/Time	FP/Time	IR/Time	IR-FBP	RECOVERY

REMARKS AND RECOMMENDATIONS: Due to structural position, DST recovery, & log evaluation, it was decided to set 5 1/2" production casing.

Perforate:
Arbuckle: 3504-610 (first set plug if set)
LKC L: 3145-28
I: 3342-46
H: 3320-24
A: 3182-85
F: 3170-73 (before abandonment)

LEGEND



Marc Downing