



DRILL STEM TEST REPORT

C G Oil Inc
 PO Box 207
 Victoria KS 67671
 ATTN: Roger Fisher

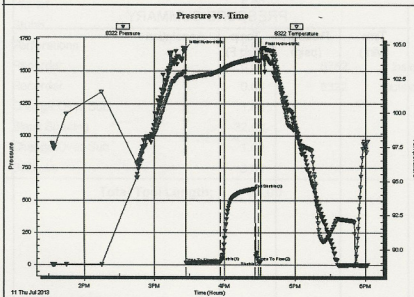
33-13s-17w Ellis, KS
S and J #1
 Job Ticket: 54311
 Test Start: 2013.07.11 @ 13:33:00
 DST#: 2

GENERAL INFORMATION:

Formation: LKC " E - G "
 Deviated: No Whipstock: ft (KB)
 Time Tool Opened: 15:26:50
 Time Test Ended: 18:02:00
 Interval: 3372.00 ft (KB) To 3415.00 ft (KB) (TVD)
 Total Depth: 3415.00 ft (KB) (TVD)
 Hole Diameter: 7.88 inches Hole Condition: Fair
 Test Type: Conventional Bottom Hole (Reset)
 Tester: Jim Svaty
 Unit No: 41
 Reference Elevations: 2028.00 ft (KB)
 2021.00 ft (CF)
 KB to GR/CF: 7.00 ft

Serial #: 8322 Outside
 Press@RunDepth: 27.02 psig @ 3378.00 ft (KB)
 Start Date: 2013.07.11 End Date: 2013.07.11
 Start Time: 13:33:01 End Time: 18:01:50
 Capacity: 8000.00 psig
 Last Calib.: 2013.07.11
 Time On Btm: 2013.07.11 @ 15:26:40
 Time Off Btm: 2013.07.11 @ 16:31:00

TEST COMMENT: 30-IFP- Good Surge on Open Surface Blow in 5 min.
 30-ISIP- No Blow
 3-FFP- Pulled No Blow



PRESSURE SUMMARY			
Time (Min.)	Pressure (psig)	Temp (deg F)	Annotation
0	1673.12	103.04	Initial Hydro-static
1	19.19	102.52	Open To Flow (1)
30	27.02	103.11	Shut-In(1)
60	589.85	103.99	End Shut-In(1)
62	26.89	103.82	Open To Flow (2)
64	26.58	103.84	Shut-In(2)
65	1662.76	104.40	Final Hydro-static

Recovery		
Length (ft)	Description	Volume (bbl)
20.00	Mud 100%	0.28

Gas Rates		
Choke (inches)	Pressure (psig)	Gas Rate (Mcf/d)

X



TRILOBITE TESTING, INC

DRILL STEM TEST REPORT

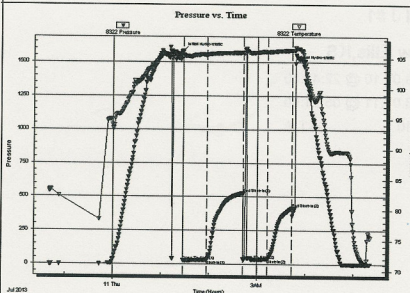
C G Oil Inc 33-13s-17w Ellis, KS
 PO Box 207 **S and J #1**
 Victoria KS 67671 Job Ticket: 54310 **DST#: 1**
 ATTN: Roger Fisher Test Start: 2013.07.10 @ 22:41:00

GENERAL INFORMATION:

Formation: **LKC "A - D"**
 Deviated: No Whipstock: ft (KB)
 Test Type: Conventional Bottom Hole (Initial)
 Time Tool Opened: 01:27:30 Tester: Jim Svaty
 Time Test Ended: 05:21:00 Unit No: 41
 Interval: **3300.00 ft (KB) To 3370.00 ft (KB) (TVD)** Reference Elevations: 2028.00 ft (KB)
 Total Depth: 3370.00 ft (KB) (TVD) 2021.00 ft (CF)
 Hole Diameter: 7.88 inches Hole Condition: Fair KB to GR/CF: 7.00 ft

Serial #: 8322 Outside
 Press@RunDepth: 37.73 psig @ 3333.00 ft (KB) Capacity: 8000.00 psig
 Start Date: 2013.07.10 End Date: 2013.07.11 Last Calib.: 2013.07.11
 Start Time: 22:41:01 End Time: 05:20:40 Time On Btm: 2013.07.11 @ 01:27:20
 Time Off Btm: 2013.07.11 @ 03:47:09

TEST COMMENT: 30-IFP- Surface Blow Building to 1/4 in. Surging Blow
 45-ISIP- No Blow
 30-FFP- No Blow on Open- Flushed- Weak Surface Blow in 23 min.
 30-FSIP- No Blow



PRESSURE SUMMARY			
Time (Min.)	Pressure (psig)	Temp (deg F)	Annotation
0	1583.05	106.00	Initial Hydro-static
1	28.52	105.14	Open To Flow (1)
30	32.61	105.52	Shut-In(1)
75	527.63	105.90	End Shut-In(1)
76	37.04	105.83	Open To Flow (2)
106	37.73	106.02	Shut-In(2)
136	418.98	106.28	End Shut-In(2)
140	1489.43	106.77	Final Hydro-static

Recovery		
Length (ft)	Description	Volume (bbl)
53.00	MUD 100%	0.74
0.00	Speck of Oil in Tool	0.00

Gas Rates			
Choke (Inches)	Pressure (psig)	Gas Rate (Mcf/d)	