



NOTES

Company:Blueridge Petroleum Corporation

Lease:Tammany 3-29

Field:Sonador

Location:NW-NE-SW-SE (1234' FSL & 1756' FEL)

Sec:29 Twsp:19S Rge:25W

County:Ness State:Kansas

KB:2543' GL:2534'

API #: 15-135-25704-0000

Contractor:Southwind Drilling, Inc. (Rig #8)

Spud:12/02/2013 Comp:12/10/2013

RTD:4649' LTD:4650'

Mud Up: 3600' Type Mud: Chemical

Samples Saved From: 3700' to RTD
 Drilling Time Kept From:3700' to RTD
 Samples Examined From: 3700' to RTD
 Geological Supervision from:3700' to RTD
 Geologist on Well: Wyatt Urban

Surface Casing: 8 5/8@ 626'

Electronic Surveys: Logged by Nabors; CDL/CNL, MEL, DIL,

**Blueridge Petroleum Corporation
well comparison sheet**

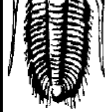
DRILLING WELL					COMPARISON WELL				COMPARISON WELL			
Blueridge Petro-Tammany #3-29					Blueridge Petro-Sonador 1-29				Blueridge Petro-Riva Ridge			
NW-NE-SW-SE 29-19S-25W					SE-NE-NW 27-11S-19W				NE-NE-SW 29-19S-25W			
2543 KB					2540 KB		Structural Relationship		2560 KB		Structural Relationship	
Formation	Sample	Sub-Sea	Log	Sub-Sea	Log	Sub-Sea	Sample	Log	Log	Sub-Sea	Sample	Log
Heebner	3862	-1319	3864	-1321	3863	-1323	4	2	3888	-1328	9	7
Toronto	3880	-1337	3876	-1333	3883	-1343	6	10				
Lansing	3901	-1358	3903	-1360	3903	-1363	5	3	3930	-1370	12	10
BKC	4273	-1730	4277	-1734	4266	-1726	-4	-8				
Marmaton	4283	-1740	4285	-1742	4276	-1736	-4	-6				
Pawnee	4368	-1825	4370	-1827	4362	-1822	-3	-5	4385	-1825	0	-2
Ft. Scott	4430	-1887	4432	-1889	4421	-1881	-6	-8	4448	-1888	1	-1
Cherokee Sh.	4454	-1911	4456	-1913	4445	-1905	-6	-8	4475	-1915	-4	2
W/ Miss	4521	-1978	4523	-1980	4507	-1967	-11	-13				
Miss	4530	-1987	4534	-1991	4519	-1979	-8	-12	4545	-1985	-2	-6
RTD	4649	-2106	4649	-2106	4600	-2060	-46	-46	4620	-2060	-46	-46
LTD	4650	-2107	4650	-2107	4606	-2066	-41	-41	4615	-2055	-52	-52



DRILL STEM TEST REPORT

Blue Ridge Petro

29 19s 25w Ness Ks.



TESTING, INC

P.O. Box 1913
Enid Ok.
7302
ATTN: Wyatt

Tammy 3-29

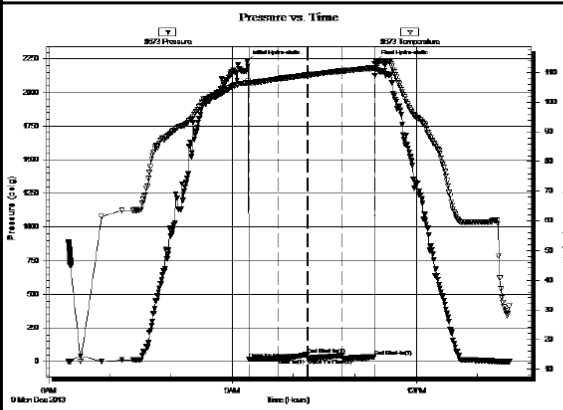
Job Ticket: 55931 DST#: 1
Test Start: 2013.12.09 @ 06:19:00

GENERAL INFORMATION:

Formation: **Fort Scott**
Deviated: No Whipstock: ft (KB)
Time Tool Opened: 09:16:00
Time Test Ended: 13:31:30
Test Type: Conventional Bottom Hole (Initial)
Tester: Chuck Kreutzer Jr.
Unit No: 61
Interval: **4406.00 ft (KB) To 4480.00 ft (KB) (TVD)**
Total Depth: 4480.00 ft (KB) (TVD)
Reference Elevations: 2534.00 ft (KB)
2525.00 ft (CF)
Hole Diameter: 7.88 inches Hole Condition: Fair
KB to GR/CF: 9.00 ft

Serial #: 8673 Inside
Press@RunDepth: 46.34 psig @ 4407.00 ft (KB) Capacity: 8000.00 psig
Start Date: 2013.12.09 End Date: 2013.12.09 Last Calib.: 2013.12.09
Start Time: 06:19:01 End Time: 13:31:30 Time On Btm: 2013.12.09 @ 09:14:30
Time Off Btm: 2013.12.09 @ 11:21:00

TEST COMMENT: F: Weak surface blow, Died in 13 mins.
IS: No blow back over 30 mins.
FF: No blow over 30 mins.
FS: No blow back over 30 mins.



PRESSURE SUMMARY

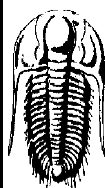
Time (Min.)	Pressure (psig)	Temp (deg F)	Annotation
0	2230.01	106.59	Initial Hydro-static
2	20.21	106.36	Open To Flow (1)
31	21.61	107.91	Shut-In(1)
59	52.55	109.25	End Shut-In(1)
60	22.63	109.25	Open To Flow (2)
93	46.34	110.59	Shut-In(2)
125	37.05	111.66	End Shut-In(2)
127	2229.97	112.80	Final Hydro-static

Recovery

Length (ft)	Description	Volume (bbl)
5.00	mud with oil specs	0.07

Gas Rates

Choke (inches)	Pressure (psig)	Gas Rate (Mcf/d)



TRILOBITE TESTING, INC

DRILL STEM TEST REPORT

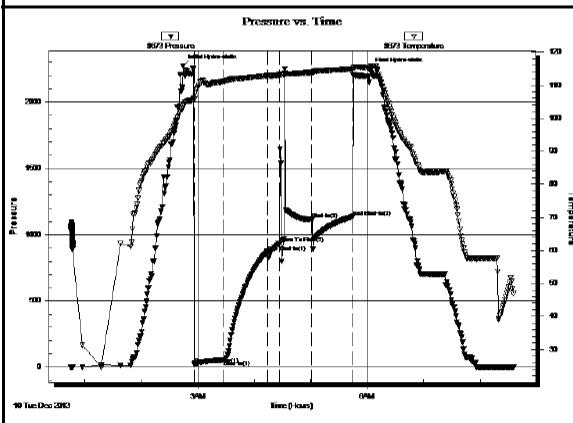
Blue Ridge Petro **29 19s 25w Ness Ks.**
P.O. Box 1913
Enid OK. 7302
ATTN: Wyatt Urban
Tammy 3-29
Job Ticket: 55932 DST#: 2
Test Start: 2013.12.10 @ 00:45:00

GENERAL INFORMATION:

Formation: **Miss.**
Deviated: No Whipstock: ft (KB)
Time Tool Opened: 02:56:30
Time Test Ended: 08:35:30
Test Type: Conventional Bottom Hole (Reset)
Tester: Chuck Kreutzer Jr.
Unit No: 61
Interval: **4478.00 ft (KB) To 4544.00 ft (KB) (TVD)**
Total Depth: 4544.00 ft (KB) (TVD)
Reference Elevations: 2534.00 ft (KB)
2525.00 ft (CF)
Hole Diameter: 7.88 inches Hole Condition: Fair
KB to GR/CF: 9.00 ft

Serial #: 8673 Inside
Press@RunDepth: 1116.48 psig @ 4479.00 ft (KB) Capacity: 8000.00 psig
Start Date: 2013.12.10 End Date: 2013.12.10 Last Calib.: 2013.12.10
Start Time: 00:45:01 End Time: 08:35:30 Time On Btm: 2013.12.10 @ 02:44:30
Time Off Btm: 2013.12.10 @ 06:03:00

TEST COMMENT: IF: Fair blow, Built to B.O.B in 20 mins.
IS: No blow back
FF: No blow over 15 mins. Flushed tool w weak blow for 3 sec.
FS: No blow back



Time (Min.)	Pressure (psig)	Temp (deg F)	Annotation
0	2271.98	103.37	Initial Hydro-static
12	26.35	105.76	Open To Flow (1)
44	54.26	111.21	Shut-In(1)
90	868.55	112.85	End Shut-In(1)
102	934.24	113.08	Open To Flow (2)
137	1116.48	113.88	Shut-In(2)
181	1135.95	114.93	End Shut-In(2)
199	2247.61	115.35	Final Hydro-static

Length (ft)	Description	Volume (bbl)
60.00	socm-20%o80%o	0.84
30.00	Hocm-30%o70%o	0.42

* Recovery from multiple tests

Choke (inches)	Pressure (psig)	Gas Rate (Mcf/d)

ROCK TYPES

Clystgy	Dolprim	Lmst fw<7	Carbon Sh
Chtcong1	Dolsec	shale, gry	shale, red

OTHER SYMBOLS

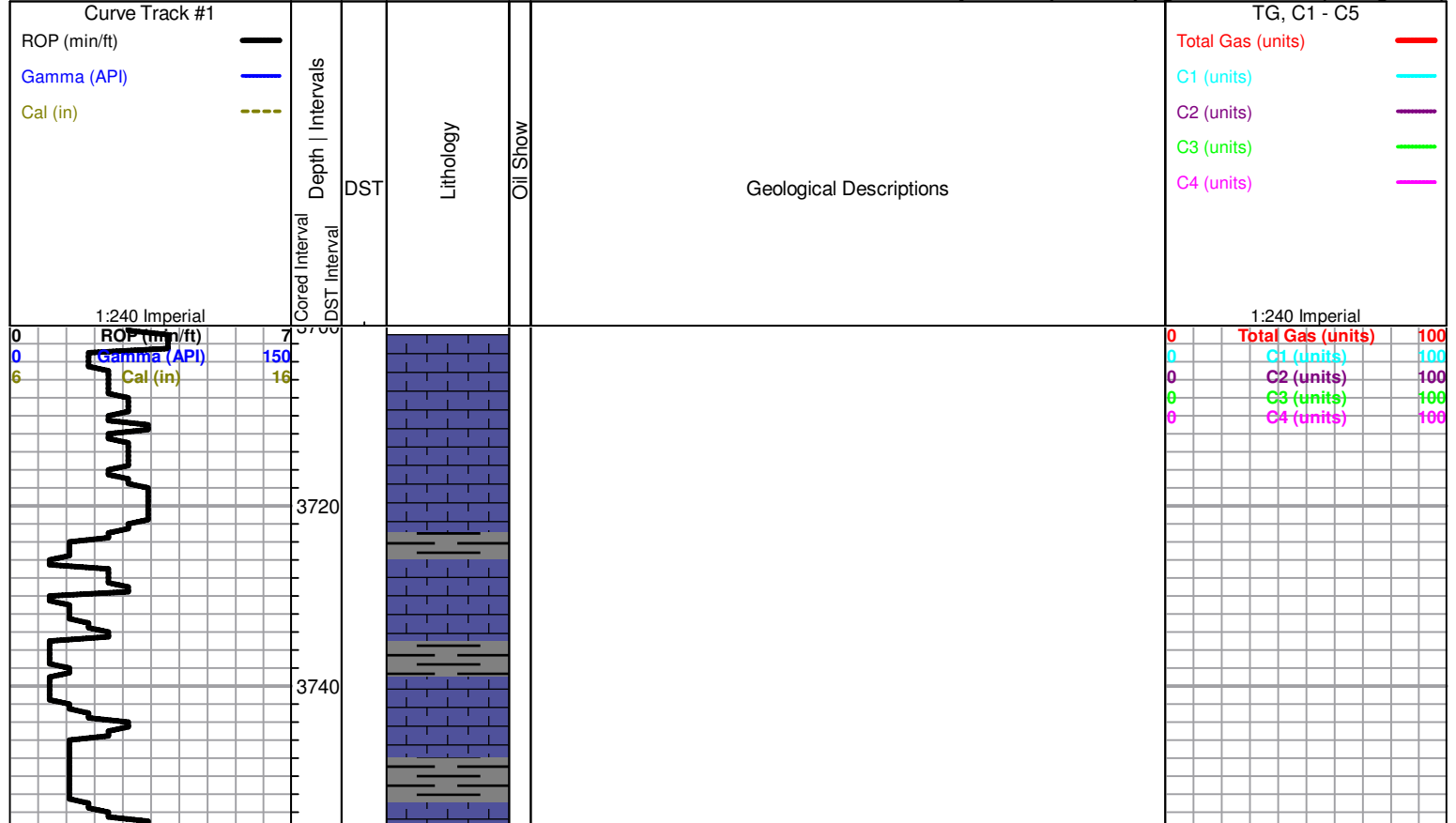
Oil Show

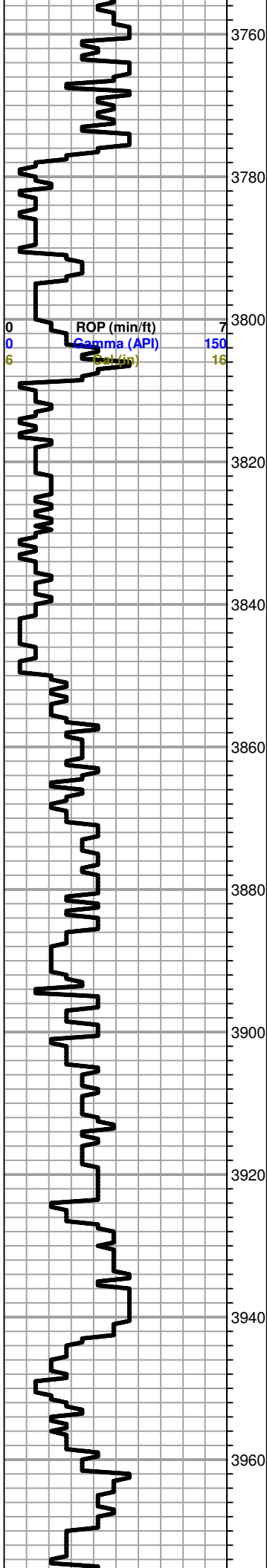
- Good Show
- Fair Show
- Poor Show
- Spotted or Trace
- Questionable Strn
- Dead Oil Strn
- Fluorescence
- * Gas

DST

- DST Int
- DST alt
- Core
- tail pipe

Printed by GEOstrip VC Striplog version 4.0.7.0 (www.grsi.ca)





LS, cream to tan, FXL, few foss poor vis. porosity,

LS, tan to brown, FXL, foss, poor vis porosity, slightly chalky, dense,

LS, brown, FXL, poor scattered porosity, no shows

HEEBNER 3864 (-1321))

Black carb shale

TORONTO 3877 (-1334)

LS, tan , FXL, poor scattered porosity, chalky, no shows

LANSING 3905 (-1362)

LS, cream to white, FXL foss, chalky, light brown trace stain, NSFO, no odor

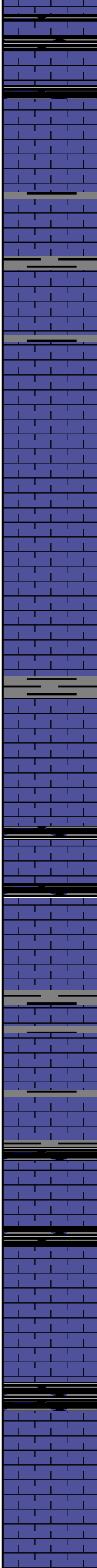
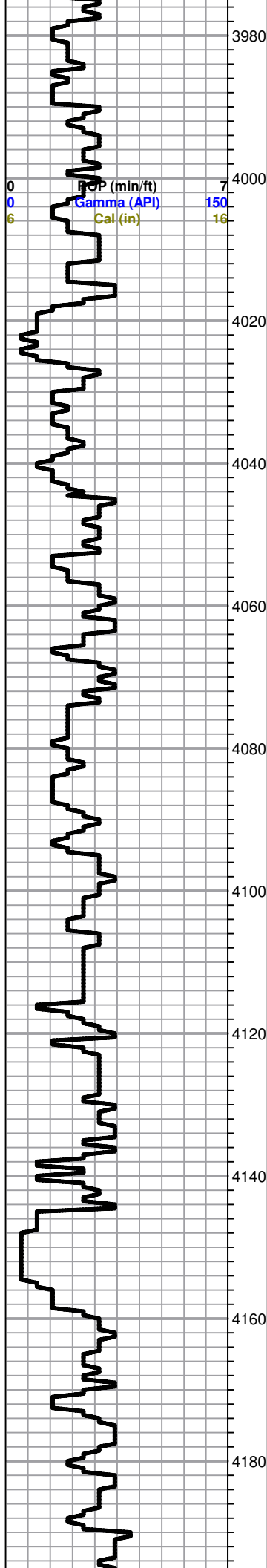
LS, brown to tan, FXL,foss, dense, poor visible porosity, poor INXLN porosity, slightly cherty in parts

Sh. black gray, silty

LS, A/A trace brown, opaque chert

LS, tan to buff, M-FXL, poor visible porosity, chalky,

0	Total Gas (units)	100
0	C1 (units)	100
0	C2 (units)	100
0	C3 (units)	100
0	C4 (units)	100



LS, A/A trace opaque ool chert, dense, no show,
Black carb shale

LS, cream to white, FXL, foss, poor scattered porosity,
no show.

LS, tan to cream, dense, few foss, poor scattered
porosity, chalky in parts

SH, black to gray, silty

LS, tan, FXL, cherty, dense, poor visible porosity, no
shows

Black carb shale, trace brick red, gray, grenish shale

LS, tan, chalky, few foss, trace chert, opaque,

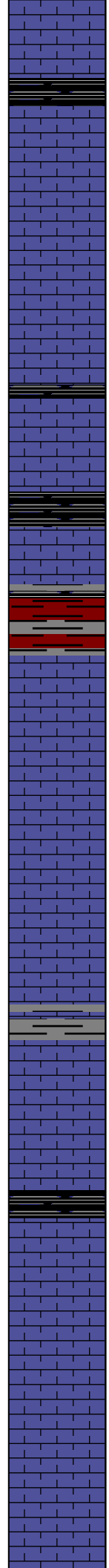
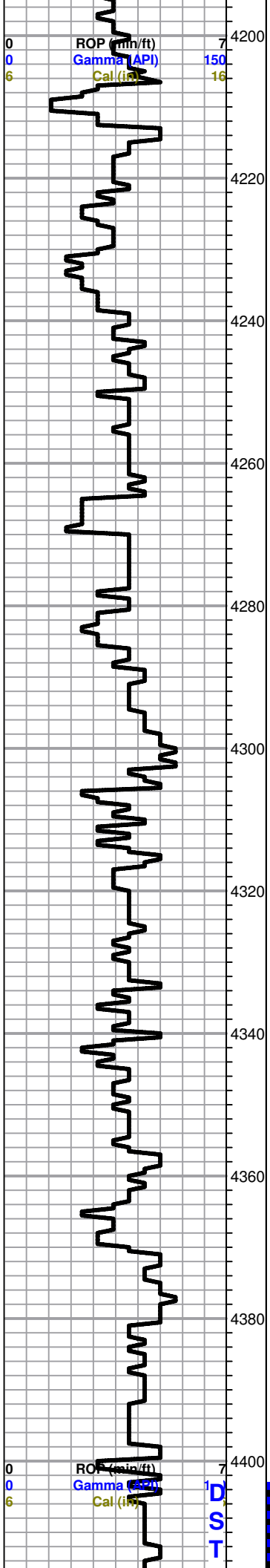
LS, tan, ool, poorly developed, poor scattered porosity,
poor INXLN porosity, no shows

Black carb shale

LS, cream ool, good oom porosity, no shows,

LS, tan, few ool, chalky, poor visible porosity, no
shows

0	Total Gas (units)	100
0	C1 (units)	100
0	C2 (units)	100
0	C3 (units)	100
0	C4 (units)	100



Black carb shale

LS, tan to brown, FXL, chalky, cherty, trace gray chert

LS, tan, FXL, slightly dol, sub ool, foss, poor INXLN porosity, poor/ fair visible porosity, no shows

BKC 4277 (-1734)

Sh. gray, black, brick red, trace opaque chert

Marmaton 4285 (-1742)

LS, tan FXL, dense, poor scattered porosity, no shows

Altamont

LS, tan, brown, mottled, FXL, dense, poor visible porosity, dense, no shows

Sh. gray, silty

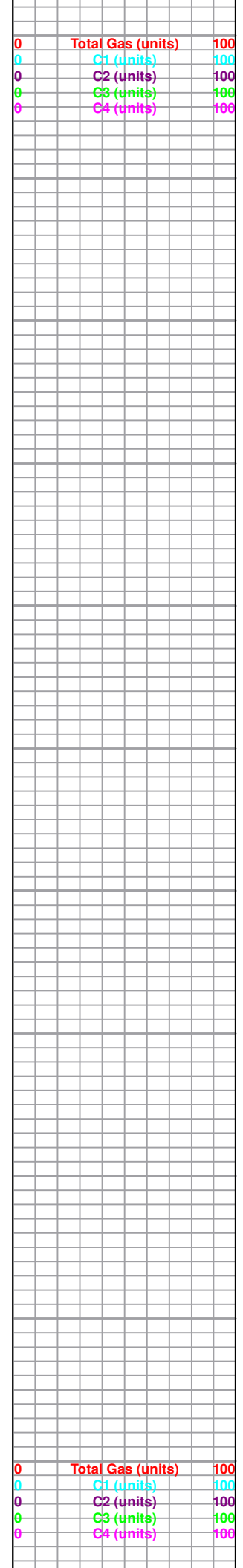
LS, brown, FXL, foss, poor scatt porosity, dense, cherty in parts, no shows

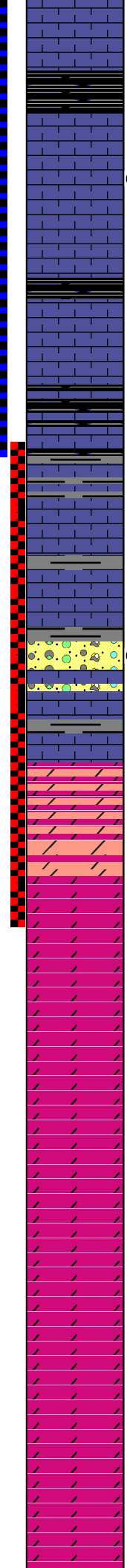
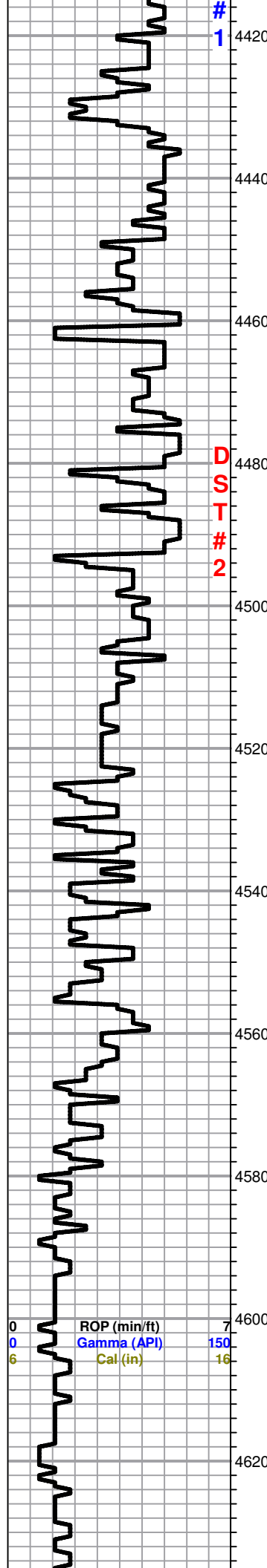
Black carb shale

Pawnee 4370 (-1827)

LS, gray, tan, white, mottled, FXL, foss, in parts, chalky, trace shale, red, gray

LS, A/A





Black Carb Sh.

Ft. Scott 4432 (-1889)

LS, tan, FXL, foss, poor visible porosity, poor scattered porosity, Light brown stain, SFO, faint odor

Cherokee 4456 (-1913)

LS, tan, brown, FXL, dense, slightly cherty, no shows,

Sh. black carb, gray, silty in parts

Chert, white, opaque, brown, trc black stain, NSFO, no odor, trace clear sand, F-Med grain, well sorted, trace black stain, no show

W. Miss 4523 (-1980)

Dol, white, tan, F-MXL, sucrosic, trace black stain, trace SFO, odor???

Miss 4534 (-1991)

Dol, tan, MXL, fair vuggy porosity, SFO, golden brown stain, good odor,

Dol, white to tan, MXL, poor INXLN porosity, dense, trace SFO, faint odor

Dol, white to tan, FXL dense, poor INXLN porosity, no shows

Dol, A/A

0	Total Gas (units)	100
0	C1 (units)	100
0	C2 (units)	100
0	C3 (units)	100
0	C4 (units)	100

4640

4660

RTD 4649'



Dol, FXL, dense, poor INXLN porosity, no shows

