

# BASIC

energy services, L.P.

## TREATMENT REPORT

Customer <b>Seneca Resources</b>	Lease No <b>corp</b>	Date <b>10-27-13</b>
Lease <b>Greengroup WA.</b>	Well # <b>14A-5WD</b>	
Field Order # <b>9059</b>	Station	Casing <b>13 7/8</b>
Type Job <b>cnw conductor</b>	Formation	Depth <b>361</b>
		County <b>Pratt</b>
		State <b>KS</b>
		Legal Description <b>14-275-12w</b>

PIPE DATA		PERFORATING DATA		FLUID USED	TREATMENT RESUME		
Casing Size <b>13 7/8</b>	Tubing Size	Shots/Ft		Acid	RATE	PRESS	ISIP
Depth <b>361</b>	Depth	From	To	Pre Pad	Max		5 Min.
Volume <b>57</b>	Volume	From	To	Pad	Min		10 Min.
Max Press	Max Press	From	To	Frac	Avg		15 Min.
Well Connection	Annulus Vol.	From	To		HHP Used		Annulus Pressure
Plug Depth <b>367</b>	Packer Depth	From	To	Flush	Gas Volume		Total Load

Customer Representative <b>Rod</b>	Station Manager <b>Kevin</b>	Treater <b>Joe</b>
Service Units <b>19884 19843 19960 21010 28443</b>		
Driver Names <b>ED Jesse Joe</b>		

Time	Casing Pressure	Tubing Pressure	Bbls. Pumped	Rate	Service Log
<b>115</b>					<b>ON LOC / safety meeting</b>
					<b>Run 9 JTS 48# CSG</b>
					<b>cent. on 1-4-7</b>
<b>200</b>					<b>START RUNNING CSG</b>
<b>300</b>					<b>CSG ON BOTTOM / Break circ with Big</b>
					<b>HOOKS UP TO PUMP TO START JOB</b>
<b>340</b>			<b>5</b>	<b>6</b>	<b>H2O SPACER</b>
			<b>56</b>	<b>6</b>	<b>MIX 195SK ASERV. LIFE @ 13.36#</b>
			<b>32</b>	<b>6</b>	<b>MIX 150SK COMMON @ 15.6#</b>
					<b>START H2O DISP.</b>
			<b>40</b>	<b>5</b>	<b>CEMENT TO SURFACE</b>
<b>420</b>			<b><del>56</del> 57</b>	<b>0</b>	<b>PLUG DOWN</b>
					<b>17 BBL cement TO SURFACE</b>
					<b>JOB COMPLETE</b>
					<b>Thankyou</b>

# BASIC

energy services, L.P.

## TREATMENT REPORT

Customer <b>CONCRETE RES.</b>	Lease No.	Date	
Lease <b>31111 HWY - W.D.</b>	Well # <b>14-2</b>	<b>10-30-13</b>	
Field Order # <b>9097</b>	Station <b>PRATT, K.</b>	Casing <b>1 7/8</b>	Depth <b>1772'</b>
Type Job <b>CNW 7 1/4 Sulfur</b>	Formation	Country <b>PRATT</b>	State <b>KS</b>
		Legal Description <b>14-27-12</b>	

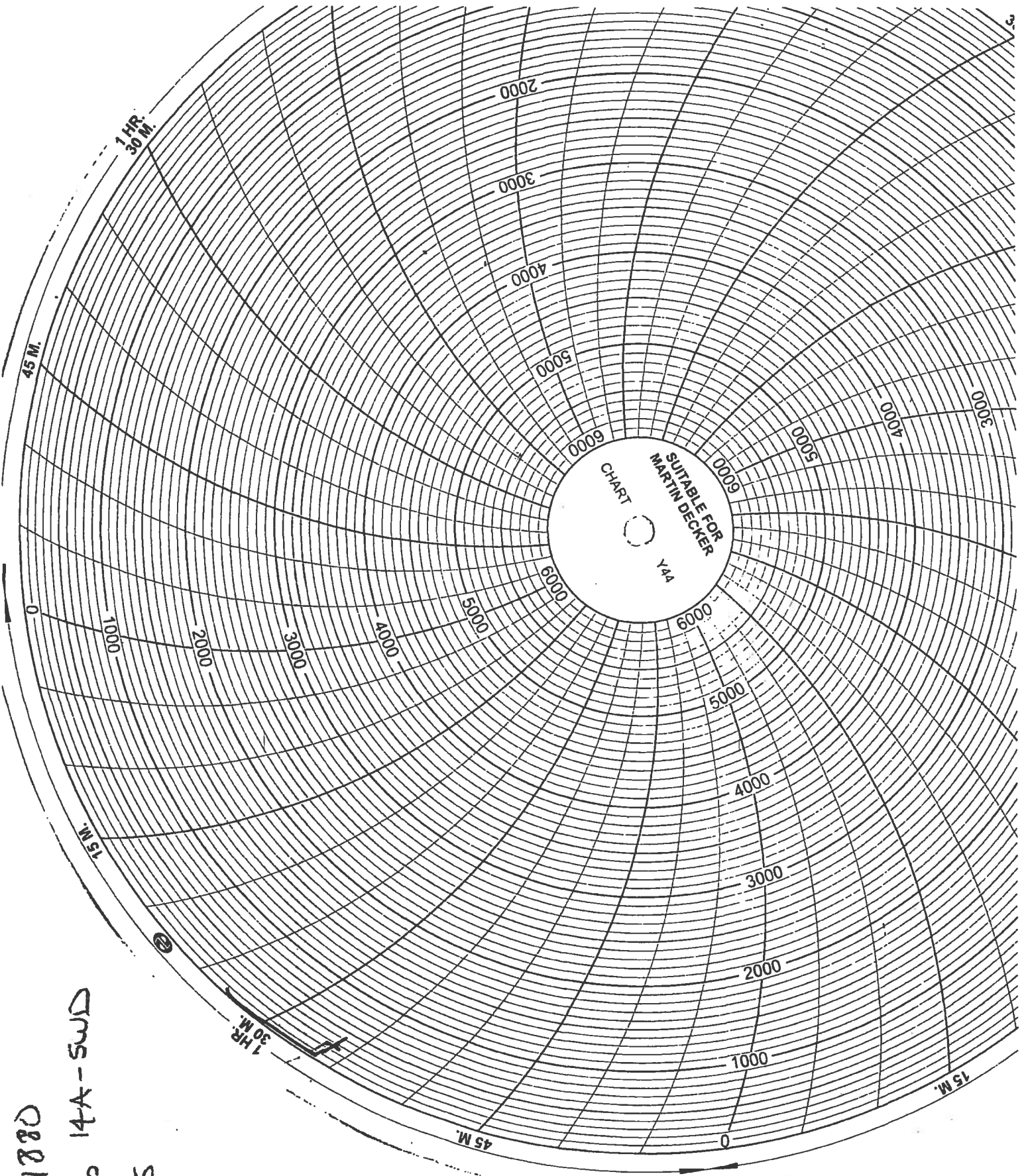
PIPE DATA		PERFORATING DATA		FLUID USED		TREATMENT RESUME		
Casing Size <b>1 7/8</b>	Tubing Size	Shots/Ft		Acid		RATE	PRESS	ISIP
Depth <b>1772</b>	Depth	From	To	Pre Pad	Max			5 Min.
Volume <b>149</b>	Volume	From	To	Pad	Min			10 Min.
Max Press <b>1,000</b>	Max Press	From	To	Frac	Avg			15 Min.
Well Connection <b>1 1/2</b>	Annulus Vol.	From	To		HHP Used			Annulus Pressure
Plug Depth <b>1732'</b>	Packer Depth	From	To	Flush	Gas Volume			Total Load

Customer Representative	Station Manager <b>DAVE SOFT</b>	Treater <b>Robert J. Miller</b>
-------------------------	----------------------------------	---------------------------------

Service Units	<b>37900</b>	<b>27463</b>	<b>19831</b>	<b>19862</b>	<b>19960</b>	<b>21010</b>	<b>28914</b>	<b>19860</b>		
Driver Names	<b>Sullivan</b>	<b>Mitchell</b>	<b>Kenning</b>		<b>NATCO</b>		<b>JESSE</b>			

Time	Casing Pressure	Tubing Pressure	Bbls. Pumped	Rate	Service Log
<b>4:50</b>					<b>ON LOC SOFT, MIDDY</b>
<b>5:15</b>	<b>300</b>		<b>5</b>	<b>6</b>	<b>CASING CIRCULATION BY PIG BOTTOM - AT SPACER</b>
			<b>246</b>		<b>AT MIXING UNIT SUCK H-CON ISLAND</b>
			<b>53</b>		<b>YIELD 3.77 WATER/SK 16.75 MIX 11.6 PPG.</b>
					<b>MIX TAIL END 250 L COMING</b>
					<b>24,000 1/4 POLYMER MIX 15.6 PPG. 1.20 YIELD 5.0 PPG.</b>
					<b>UNIT MIXED SHUT DOWN</b>
					<b>RELEASE PLUG</b>
<b>6:05</b>	<b>200</b>			<b>6.5</b>	<b>AT PAD</b>
	<b>500</b>		<b>70</b>	<b>3.5</b>	<b>SLOW RATE WATER LOW TANK</b>
<b>2:00</b>	<b>700</b>		<b>149</b>		<b>PLUG DOWN FRONT 440.</b>
<b>3:15</b>				<b>1.5</b>	<b>RUN ONE JOINT 1" CUT TO</b>
<b>7:30</b>			<b>7</b>		<b>SURFACE 25 SK.</b>
					<b>503 COMPLETE</b>
					<b>9 bbls - 5 bbls</b>
					<b>THANK YOU</b>

AFE 131880  
Greengroup 14A-5WD  
Kansas



# BASIC

energy services, L.P.

## TREATMENT REPORT

Customer S. J. ...	Lease No. 14A-547	Date 11-10-13
Lease G. ...	Well # 14A-547	
Field Order # 9365	Station Pratt	Casing 7"
	Depth 7"	County Pratt
Type Job CIVW	Formation 7"	State KS
		Legal Description 14-275-12W

PIPE DATA		PERFORATING DATA		FLUID USED		TREATMENT RESUME	
Casing Size 7"	Tubing Size	Shots/Ft		Acid 80% SAH	RATE 6.5 GPM	PRESS 600 PSI	ISIP 1/4 CT
Depth 4605'	Depth	From	To	Pre Pad 140 SAH	Max 10 GPM	Min 10 GPM	5 Min. 25 min.
Volume 176.38	Volume	From	To	Pad 10% SAH	Avg		10 Min. 20 min.
Max Press 1500	Max Press	From	To	Frac 5" gel			15 Min.
Well Connection J.C.	Annulus Vol.	From	To		HHP Used		Annulus Pressure
Plug Depth 4599.42	Packer Depth	From	To	Flush	Gas Volume		Total Load

Customer Representative Roo Mills	Station Manager Kevin Gaudry	Treater Mike Matton
--------------------------------------	---------------------------------	------------------------

Service Units 37586	77686	19905	19960	21010
Driver Names M. ...	( ) O/T Z		PHYE	

Time	Casing Pressure	Tubing Pressure	Bbls. Pumped	Rate	Service Log
3:00					Call Location / Safety on camp
7:00					Run 7in casing
1:05					Oil bottom
1:10					1600 wt to casing / Break cement plug
					Rig down casing crew / Rig up cement crew
2:50	200		12	5	Phase 12 AB1 1400 flush
2:53	200		5	5	Phase 9 12in H2O
2:54	200		28	6	Mix 80% SAH 1400
3:05	200		43	6	Mix 140 SAH pressure
3:12	100			6	Release plug, start displacement
3:45	700		161	3.5	slow 100 to 3.5
3:49	1100		176		Plug down, released & hold
					Call Tim Tull
					Tim completion
					Thank you
					Mike Matton