



## DRILL STEM TEST REPORT

Prepared For: **American Warrior, Inc.**

PO Box 399  
Garden City, KS 67846

ATTN: Kevin Timson

### **Congdon #6-28**

#### **28-23s-32w Finney,KS**

Start Date: 2013.12.09 @ 19:03:00

End Date: 2013.12.10 @ 04:59:15

Job Ticket #: 55661                      DST #: 1

Trilobite Testing, Inc  
PO Box 362 Hays, KS 67601  
ph: 785-625-4778 fax: 785-625-5620

Printed: 2013.12.13 @ 13:55:39



**TRILOBITE  
TESTING, INC**

# DRILL STEM TEST REPORT

American Warrior, Inc.

**28-23s-32w Finney, KS**

PO Box 399  
Garden City, KS 67846

**Congdon #6-28**

Job Ticket: 55661

**DST#: 1**

ATTN: Kevin Timson

Test Start: 2013.12.09 @ 19:03:00

## GENERAL INFORMATION:

Formation: **Pawnee- Cherokee**

Deviated: No Whipstock: ft (KB)

Time Tool Opened: 21:57:15

Time Test Ended: 04:59:15

Test Type: Conventional Bottom Hole (Initial)

Tester: Sam Esparza

Unit No: 64

**Interval: 4470.00 ft (KB) To 4545.00 ft (KB) (TVD)**

Reference Elevations: 2853.00 ft (KB)

Total Depth: 4545.00 ft (KB) (TVD)

2841.00 ft (CF)

Hole Diameter: 7.88 inches Hole Condition: Good

KB to GR/CF: 12.00 ft

**Serial #: 8845 Outside**

Press@RunDepth: 360.76 psig @ 4471.00 ft (KB)

Capacity: 8000.00 psig

Start Date: 2013.12.09 End Date: 2013.12.10

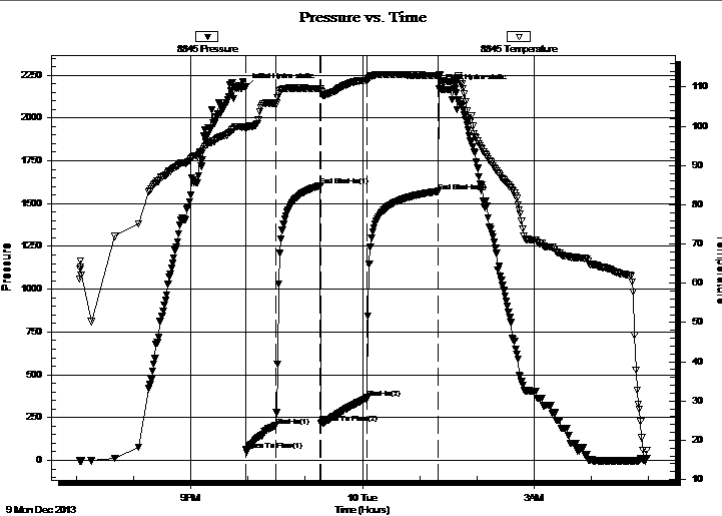
Last Calib.: 2013.12.10

Start Time: 19:03:05 End Time: 04:59:15

Time On Btm: 2013.12.09 @ 21:57:00

Time Off Btm: 2013.12.10 @ 01:20:15

**TEST COMMENT:** IF: BOB @ 3 min.  
IS: Bled off 6 min. No Return.  
FF: BOB 4 min. GTS @ 39 min.  
FS: Bled off for 6 min. Never died 1/4" Return built to 8" Return.



## PRESSURE SUMMARY

Time (Min.)	Pressure (psig)	Temp (deg F)	Annotation
0	2179.94	99.94	Initial Hydro-static
1	61.58	99.25	Open To Flow (1)
32	202.55	105.88	Shut-In(1)
79	1605.02	109.53	End Shut-In(1)
80	217.47	109.03	Open To Flow (2)
128	360.76	111.70	Shut-In(2)
203	1571.88	112.86	End Shut-In(2)
204	2171.78	113.10	Final Hydro-static

## Recovery

Length (ft)	Description	Volume (bbl)
150.00	GOCM 20g 30o 50m	2.10
650.00	GO 20g 80o	9.12

## Gas Rates

	Choke (inches)	Pressure (psig)	Gas Rate (Mcf/d)





**TRILOBITE  
TESTING, INC**

# DRILL STEM TEST REPORT

**TOOL DIAGRAM**

American Warrior, Inc.

**28-23s-32w Finney,KS**

PO Box 399  
Garden City, KS 67846

**Congdon #6-28**

Job Ticket: 55661

**DST#: 1**

ATTN: Kevin Timson

Test Start: 2013.12.09 @ 19:03:00

## Tool Information

Drill Pipe:	Length: 4472.00 ft	Diameter: 3.80 inches	Volume: 62.73 bbl	Tool Weight: 2000.00 lb
Heavy Wt. Pipe:	Length: 0.00 ft	Diameter: 0.00 inches	Volume: 0.00 bbl	Weight set on Packer: 30000.00 lb
Drill Collar:	Length: 0.00 ft	Diameter: 0.00 inches	Volume: 0.00 bbl	Weight to Pull Loose: 85000.00 lb
			<u>Total Volume: 62.73 bbl</u>	Tool Chased 0.00 ft
Drill Pipe Above KB:	30.00 ft			String Weight: Initial 54000.00 lb
Depth to Top Packer:	4470.00 ft			Final 58000.00 lb
Depth to Bottom Packer:	ft			
Interval between Packers:	75.00 ft			
Tool Length:	103.00 ft			
Number of Packers:	2	Diameter: 6.75 inches		

Tool Comments:

## Tool Description

Tool Description	Length (ft)	Serial No.	Position	Depth (ft)	Accum. Lengths
Change Over Sub	1.00			4443.00	
Shut In Tool	5.00			4448.00	
Hydraulic tool	5.00			4453.00	
Jars	5.00			4458.00	
Safety Joint	3.00			4461.00	
Packer	5.00			4466.00	28.00 Bottom Of Top Packer
Packer	4.00			4470.00	
Stubb	1.00			4471.00	
Recorder	0.00	6772	Outside	4471.00	
Recorder	0.00	8845	Outside	4471.00	
Perforations	4.00			4475.00	
Change Over Sub	1.00			4476.00	
Drill Pipe	63.00			4539.00	
Change Over Sub	1.00			4540.00	
Bullnose	5.00			4545.00	75.00 Bottom Packers & Anchor

**Total Tool Length: 103.00**



**TRILOBITE  
TESTING, INC**

# DRILL STEM TEST REPORT

## FLUID SUMMARY

American Warrior, Inc.

**28-23s-32w Finney,KS**

PO Box 399  
Garden City, KS 67846

**Congdon #6-28**

Job Ticket: 55661

**DST#: 1**

ATTN: Kevin Timson

Test Start: 2013.12.09 @ 19:03:00

### Mud and Cushion Information

Mud Type: Gel Chem

Cushion Type:

Oil API:

31 deg API

Mud Weight: 9.00 lb/gal

Cushion Length:

ft

Water Salinity:

ppm

Viscosity: 47.00 sec/qt

Cushion Volume:

bbbl

Water Loss: 7.98 in<sup>3</sup>

Gas Cushion Type:

Resistivity: 0.00 ohm.m

Gas Cushion Pressure:

psig

Salinity: 4000.00 ppm

Filter Cake: 1.00 inches

### Recovery Information

Recovery Table

Length ft	Description	Volume bbl
150.00	GOCM 20g 30o 50m	2.104
650.00	GO 20g 80o	9.118

Total Length: 800.00 ft      Total Volume: 11.222 bbl

Num Fluid Samples: 0

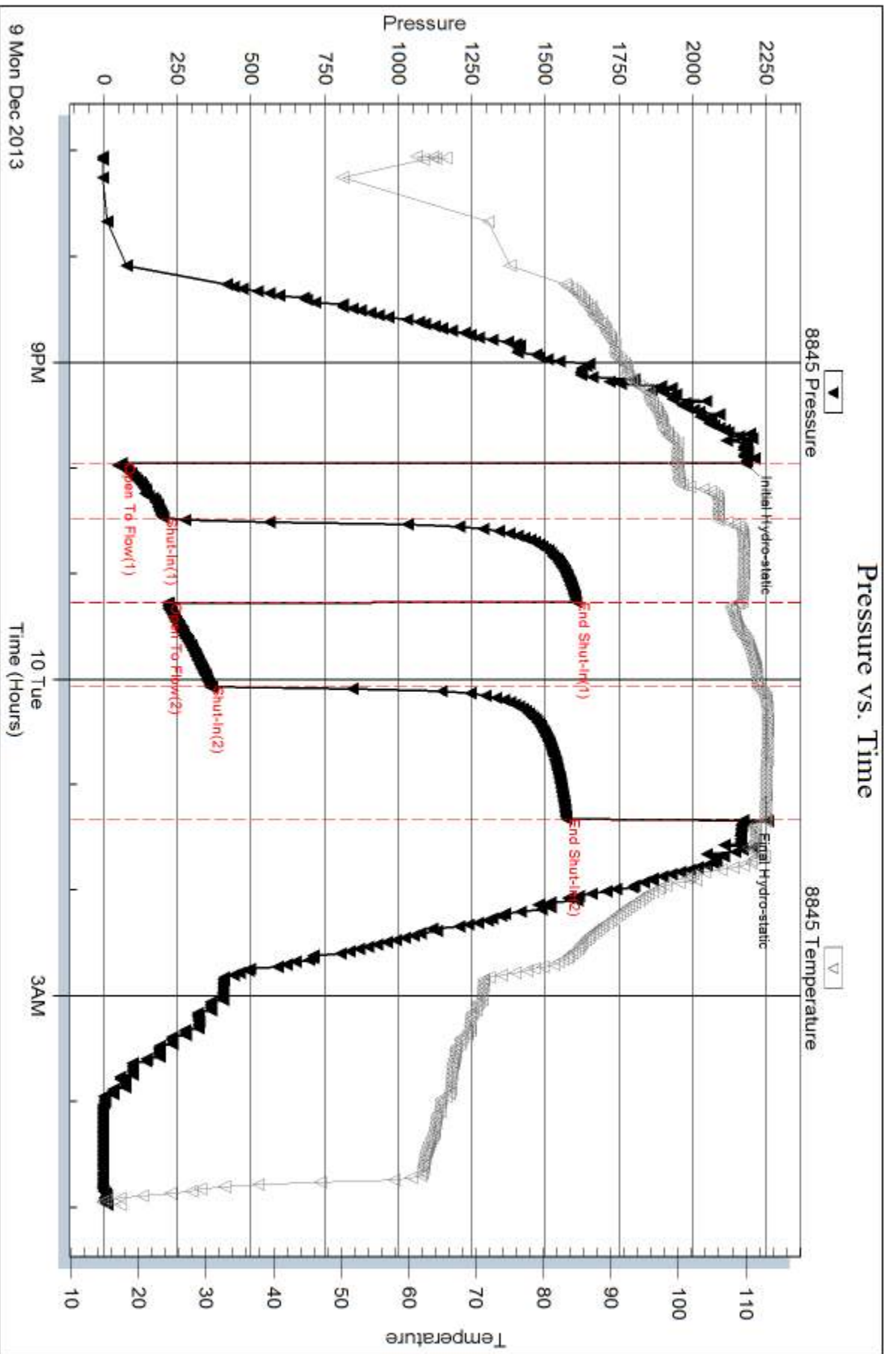
Num Gas Bombs: 0

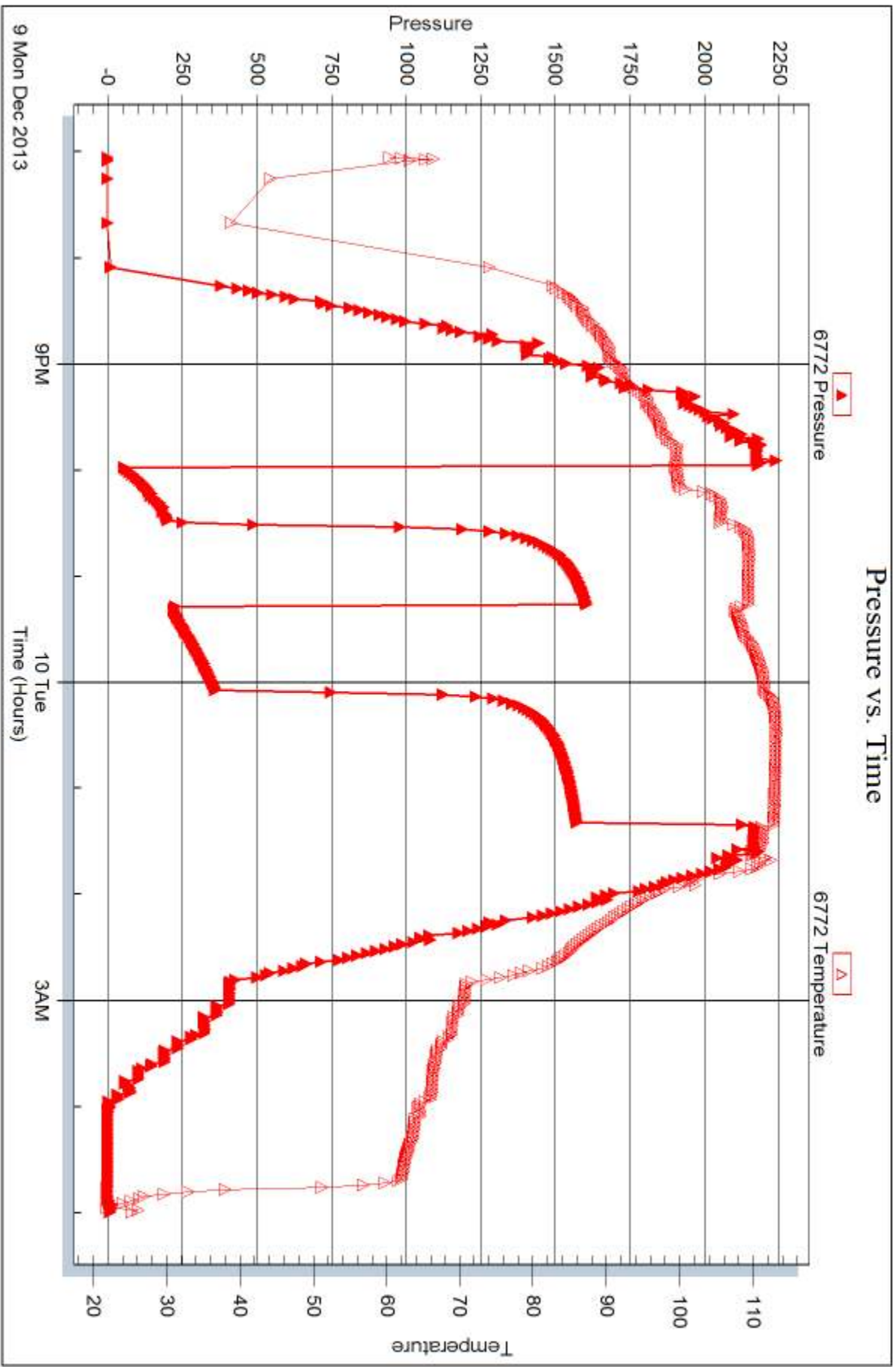
Serial #:

Laboratory Name:

Laboratory Location:

Recovery Comments: Oil API: 28 @ 30 degrees= 31 deg API







## DRILL STEM TEST REPORT

Prepared For: **American Warrior, Inc.**

PO Box 399  
Garden City, KS 67846

ATTN: Kevin Timson

### **Congdon #6-28**

#### **28-23s-32w Finney,KS**

Start Date: 2013.12.11 @ 12:14:00

End Date: 2013.12.11 @ 18:35:45

Job Ticket #: 55662                      DST #: 2

Trilobite Testing, Inc

PO Box 362 Hays, KS 67601

ph: 785-625-4778 fax: 785-625-5620

Printed: 2013.12.13 @ 13:54:46





**TRILOBITE  
TESTING, INC**

# DRILL STEM TEST REPORT

American Warrior, Inc.

**28-23s-32w Finney, KS**

PO Box 399  
Garden City, KS 67846

**Congdon #6-28**

Job Ticket: 55662

**DST#: 2**

ATTN: Kevin Timson

Test Start: 2013.12.11 @ 12:14:00

## GENERAL INFORMATION:

Formation: **Morrow**

Deviated: No Whipstock: ft (KB)

Time Tool Opened: 14:09:00

Time Test Ended: 18:35:45

Test Type: Conventional Bottom Hole (Reset)

Tester: Sam Esparza

Unit No: 64

**Interval: 4660.00 ft (KB) To 4715.00 ft (KB) (TVD)**

Reference Elevations: 2853.00 ft (KB)

Total Depth: 4715.00 ft (KB) (TVD)

2841.00 ft (CF)

Hole Diameter: 7.88 inches Hole Condition: Good

KB to GR/CF: 12.00 ft

**Serial #: 8845 Outside**

Press@RunDepth: 29.36 psig @ 4661.00 ft (KB)

Capacity: 8000.00 psig

Start Date: 2013.12.11

End Date:

2013.12.11

Last Calib.: 2013.12.11

Start Time: 12:14:05

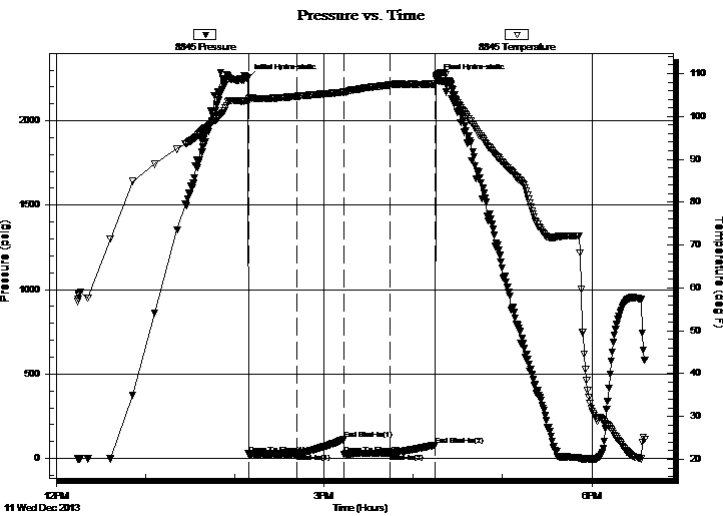
End Time:

18:35:44

Time On Btm: 2013.12.11 @ 14:08:30

Time Off Btm: 2013.12.11 @ 16:15:30

TEST COMMENT: IF: 2" Blow.  
IS: No Return.  
FF: 1 1/4" Blow.  
FS: No Return.



## PRESSURE SUMMARY

Time (Min.)	Pressure (psig)	Temp (deg F)	Annotation
0	2252.23	103.61	Initial Hydro-static
1	26.51	103.59	Open To Flow (1)
33	27.50	104.66	Shut-In(1)
65	112.21	105.62	End Shut-In(1)
65	23.93	105.59	Open To Flow (2)
96	29.36	107.34	Shut-In(2)
126	78.82	107.56	End Shut-In(2)
127	2249.54	109.51	Final Hydro-static

## Recovery

Length (ft)	Description	Volume (bbl)
30.00	OCM 15o 85m	0.42

\* Recovery from multiple tests

## Gas Rates

Choke (inches)	Pressure (psig)	Gas Rate (Mcf/d)





**TRILOBITE  
TESTING, INC**

# DRILL STEM TEST REPORT

**TOOL DIAGRAM**

American Warrior, Inc.

**28-23s-32w Finney,KS**

PO Box 399  
Garden City, KS 67846

**Congdon #6-28**

Job Ticket: 55662

**DST#: 2**

ATTN: Kevin Timson

Test Start: 2013.12.11 @ 12:14:00

## Tool Information

Drill Pipe:	Length: 4662.00 ft	Diameter: 3.80 inches	Volume: 65.40 bbl	Tool Weight: 2000.00 lb
Heavy Wt. Pipe:	Length: 0.00 ft	Diameter: 0.00 inches	Volume: 0.00 bbl	Weight set on Packer: 30000.00 lb
Drill Collar:	Length: 0.00 ft	Diameter: 0.00 inches	Volume: 0.00 bbl	Weight to Pull Loose: 70000.00 lb
			<u>Total Volume: 65.40 bbl</u>	Tool Chased 0.00 ft
Drill Pipe Above KB:	30.00 ft			String Weight: Initial 56000.00 lb
Depth to Top Packer:	4660.00 ft			Final 56000.00 lb
Depth to Bottom Packer:	ft			
Interval between Packers:	55.00 ft			
Tool Length:	83.00 ft			
Number of Packers:	2	Diameter: 6.75 inches		

Tool Comments:

## Tool Description

Tool Description	Length (ft)	Serial No.	Position	Depth (ft)	Accum. Lengths
Change Over Sub	1.00			4633.00	
Shut In Tool	5.00			4638.00	
Hydraulic tool	5.00			4643.00	
Jars	5.00			4648.00	
Safety Joint	3.00			4651.00	
Packer	5.00			4656.00	28.00 Bottom Of Top Packer
Packer	4.00			4660.00	
Stubb	1.00			4661.00	
Recorder	0.00	6772	Outside	4661.00	
Recorder	0.00	8845	Outside	4661.00	
Perforations	16.00			4677.00	
Change Over Sub	1.00			4678.00	
Drill Pipe	31.00			4709.00	
Change Over Sub	1.00			4710.00	
Bullnose	5.00			4715.00	55.00 Bottom Packers & Anchor

**Total Tool Length: 83.00**



**TRILOBITE  
TESTING, INC**

# DRILL STEM TEST REPORT

**FLUID SUMMARY**

American Warrior, Inc.

**28-23s-32w Finney,KS**

PO Box 399  
Garden City, KS 67846

**Congdon #6-28**

Job Ticket: 55662

**DST#: 2**

ATTN: Kevin Timson

Test Start: 2013.12.11 @ 12:14:00

## Mud and Cushion Information

Mud Type: Gel Chem

Cushion Type:

Oil API:

deg API

Mud Weight: 9.00 lb/gal

Cushion Length:

ft

Water Salinity:

ppm

Viscosity: 53.00 sec/qt

Cushion Volume:

bbl

Water Loss: 8.79 in<sup>3</sup>

Gas Cushion Type:

Resistivity: 0.00 ohm.m

Gas Cushion Pressure:

psig

Salinity: 3800.00 ppm

Filter Cake: 1.00 inches

## Recovery Information

Recovery Table

Length ft	Description	Volume bbl
30.00	OCM 15o 85m	0.421

Total Length: 30.00 ft      Total Volume: 0.421 bbl

Num Fluid Samples: 0

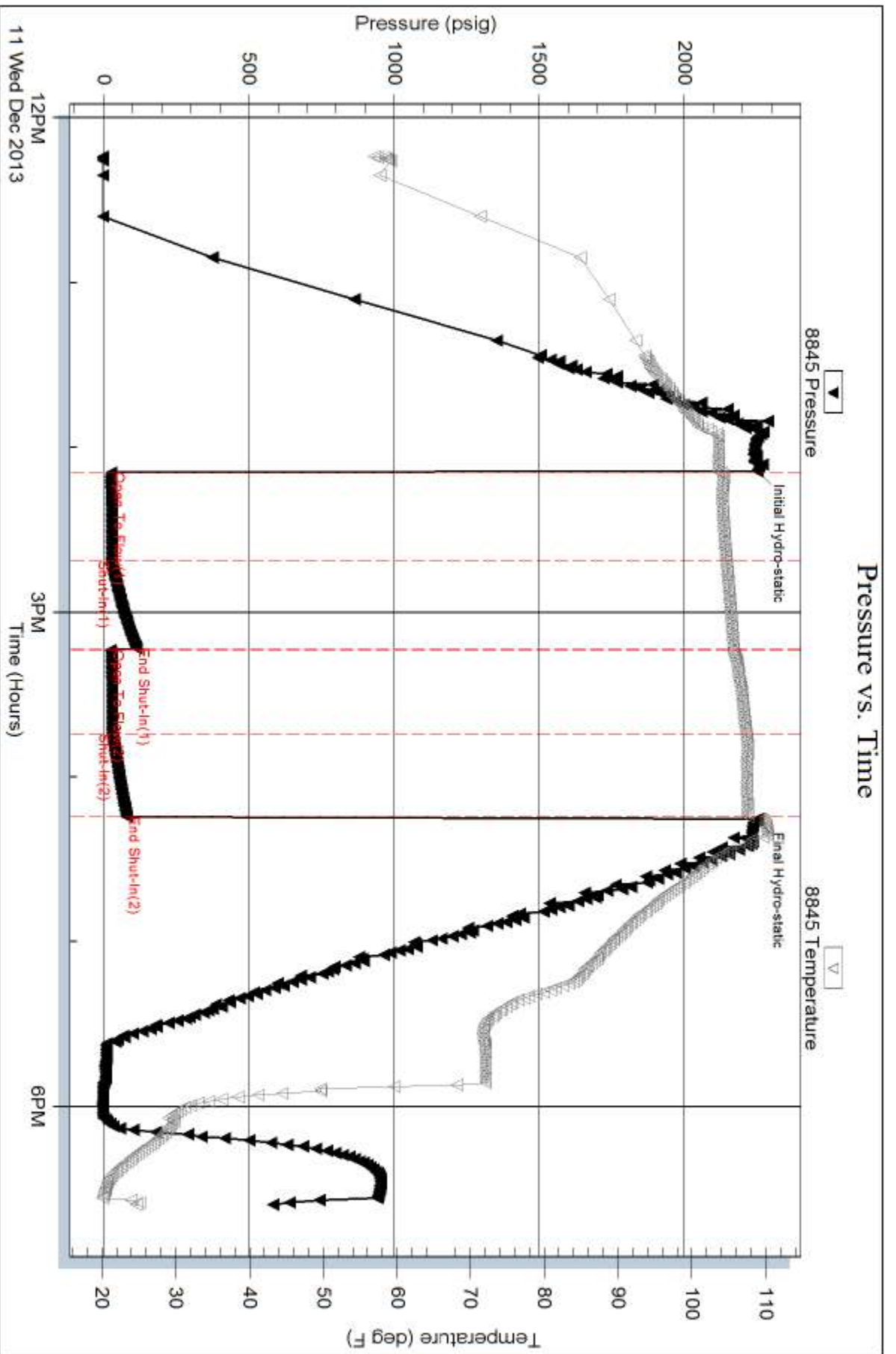
Num Gas Bombs: 0

Serial #:

Laboratory Name:

Laboratory Location:

Recovery Comments:

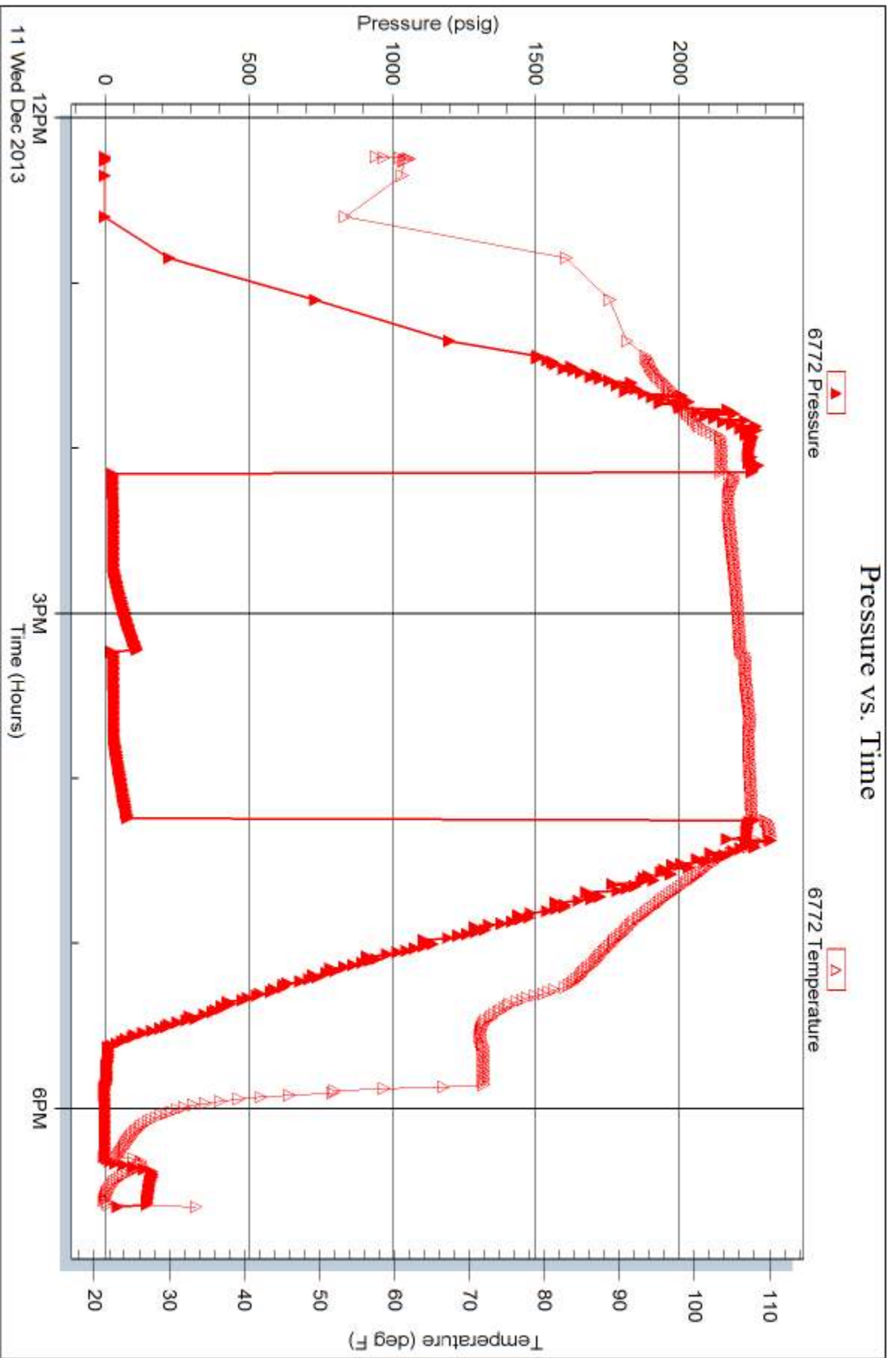


Serial #: 6772

Outside American Warrior, Inc.

Congdon #6-28

DST Test Number: 2

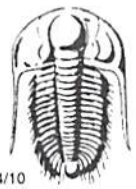


Triobite Testing, Inc

Ref. No: 55662

Printed: 2013.12.13 @ 13:54:49





# TRILOBITE TESTING INC.

1515 Commerce Parkway • Hays, Kansas 67601

## Test Ticket

NO. 55661

Well Name & No. Congdon #6-28 Test No. 1 Date 12/9/13  
 Company American Warrior Inc. Elevation 2853 KB 2841 GL  
 Address 3118 Cummings Rd P.O. Box 399 Garden City, KS 67846  
 Co. Rep / Geo. Kevin Timson Rig Duke #1  
 Location: Sec. 28 Twp. 23S Rge. 32W Co. Finney State KS

Interval Tested 4470-4545 Zone Tested Dance - Cherokee  
 Anchor Length 75' Drill Pipe Run 4472 Mud Wt. 9.2  
 Top Packer Depth 4466 Drill Collars Run Ø Vis 47  
 Bottom Packer Depth 4470 Wt. Pipe Run Ø WL 8.0  
 Total Depth 4545 Chlorides 4000 ppm System LCM 2

Blow Description IF: BOB @ 3 min  
TST: Bled off 6 min No Return.  
FF: BOB @ 4 min GTS @ 39 min.  
RST: Bled off 6 min. Never diet 4" Return built to 8" Return.

Rec	Feet of	%gas	%oil	%water	%mud
<u>650</u>	<u>60</u>	<u>20</u>	<u>80</u>		
<u>150</u>	<u>60cm</u>	<u>20</u>	<u>30</u>		<u>50</u>
Rec	Feet of	%gas	%oil	%water	%mud
Rec	Feet of	%gas	%oil	%water	%mud
Rec	Feet of	%gas	%oil	%water	%mud

Rec Total 800 BHT 113 Gravity 31 API RW — @ — ° F Chlorides — ppm

(A) Initial Hydrostatic 2180  Test 1250 T-On Location 18:00  
 (B) First Initial Flow 62  Jars 250 T-Started 19:03  
 (C) First Final Flow 203  Safety Joint 75 T-Open 21:58  
 (D) Initial Shut-In 1605  Circ Sub N/C T-Pulled 1:06  
 (E) Second Initial Flow 217  Hourly Standby \_\_\_\_\_ T-Out 4:59  
 (F) Second Final Flow ~~200~~ 361  Mileage 76 R/T 117.80 Comments Gravity! 28 @ 30 =  
 (G) Final Shut-In 1572  Sampler \_\_\_\_\_ degrees = 31 API  
 (H) Final Hydrostatic 2172  Straddle \_\_\_\_\_  Ruined Shale Packer \_\_\_\_\_  
 Shale Packer \_\_\_\_\_  Ruined Packer \_\_\_\_\_  
 Extra Packer \_\_\_\_\_  Extra Copies \_\_\_\_\_

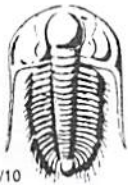
Initial Open 30  
 Initial Shut-In 45  
 Final Flow 45  
 Final Shut-In 60

Sub Total 0  
 Total 1692.80  
 MP/DST Disc't \_\_\_\_\_

Approved By [Signature] Our Representative [Signature]

Trilobite Testing Inc. shall not be liable for damaged of any kind of the property or personnel of the one for whom a test is made, or for any loss suffered or sustained, directly or indirectly, through the use of its equipment, or its statements of opinion concerning the results of any test, tools lost or damaged in the hole shall be paid for at cost by the party for whom the test is made.





# TRILOBITE TESTING INC.

1515 Commerce Parkway • Hays, Kansas 67601

## Test Ticket

NO. 55662

Well Name & No. Congdon # 6-28 Test No. 2 Date 12/11/13  
 Company American Warrior, Inc. Elevation 2853 KB 2841 GL  
 Address 3118 Cummings RD P.O. Box 399 Garden City, KS 67846  
 Co. Rep / Geo. Kevin Timson Rig Duke #1  
 Location: Sec. 28 Twp. 23S Rge. 32W Co. Finney State KS

Interval Tested 4660-4715 Zone Tested "Morrow"  
 Anchor Length 55' Drill Pipe Run 4662 Mud Wt. 9.0  
 Top Packer Depth 4656 Drill Collars Run 0 Vis 53  
 Bottom Packer Depth 4660 Wt. Pipe Run 0 WL 8.8  
 Total Depth 4715 Chlorides 3800 ppm System LCM 2

Blow Description IF: 2" Blow.  
ISI: No Return.  
FF: 1 1/4" Blow.  
FST: NO Return.

Rec	Feet of	%gas	%oil	%water	%mud
<u>30</u>	<u>αM</u>		<u>15</u>		<u>85</u>
Rec	Feet of	%gas	%oil	%water	%mud
Rec	Feet of	%gas	%oil	%water	%mud
Rec	Feet of	%gas	%oil	%water	%mud

Rec Total 30 BHT 108 Gravity — API RW — @ — F Chlorides — ppm

(A) Initial Hydrostatic <u>2252</u>	<input checked="" type="checkbox"/> Test <u>1250</u>	T-On Location <u>11:50</u>
(B) First Initial Flow <u>27</u>	<input checked="" type="checkbox"/> Jars <u>250</u>	T-Started <u>12:14</u>
(C) First Final Flow <u>28</u>	<input checked="" type="checkbox"/> Safety Joint <u>75</u>	T-Open <u>14:10</u>
(D) Initial Shut-In <u>112</u>	<input checked="" type="checkbox"/> Circ Sub <u>N/C</u>	T-Pulled <u>16:13</u>
(E) Second Initial Flow <u>24</u>	<input checked="" type="checkbox"/> Hourly Standby <u>X7</u>	T-Out <u>18:36</u>
(F) Second Final Flow <u>29</u>	<input checked="" type="checkbox"/> Mileage <u>76 R/T</u> 117.80	Comments <u>projected time out</u>
(G) Final Shut-In <u>79</u>	<input type="checkbox"/> Sampler	<u>12:00 Actual time out</u>
(H) Final Hydrostatic <u>2250</u>	<input type="checkbox"/> Straddle	<u>11:00 Rig waited 1 hour.</u>

Initial Open 30  
 Initial Shut-In 30  
 Final Flow 30  
 Final Shut-In 30

Day Standby X1 d 6.75h  
 Accessibility  
 Sub Total 1692.80

Ruined Shale Packer  
 Ruined Packer  
 Extra Copies  
 Sub Total 225  
 Total 1917.80  
 MP/DST Disc't

Approved By \_\_\_\_\_ Our Representative

Trilobite Testing Inc. shall not be liable for damaged of any kind of the property or personnel of the one for whom a test is made, or for any loss suffered or sustained, directly or indirectly, through the use of its equipment, or its statements or opinion concerning the results of any test, tools lost or damaged in the hole shall be paid for at cost by the party for whom the test is made.