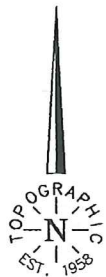
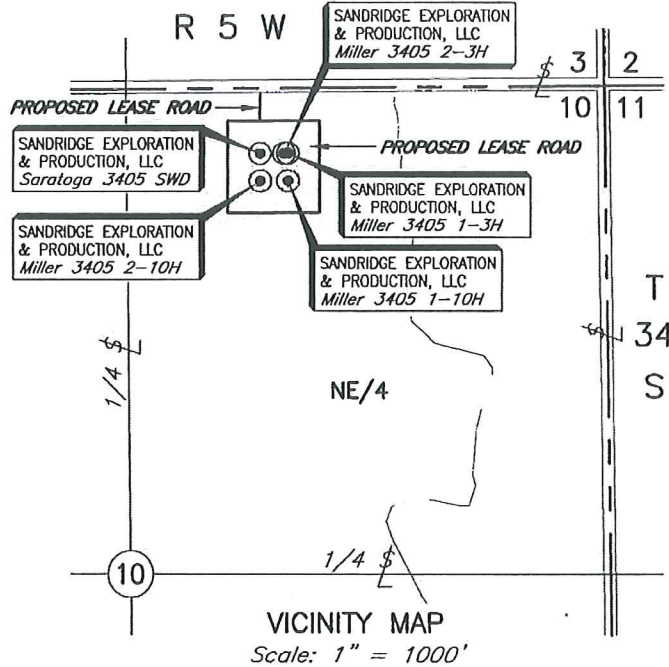


T 34 S - R 5 W

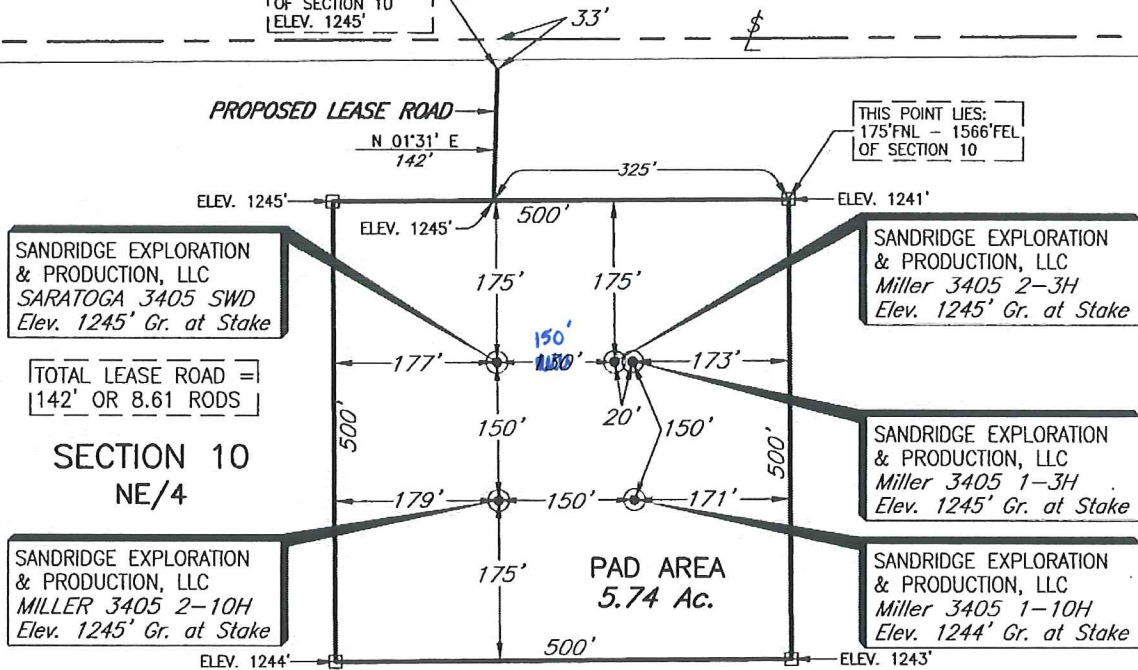


GRID
NAD-27
KANSAS SOUTH
US FEET
3.280833 Ft. = 1 Meter
0' 100' 200'
SCALE:
1" = 200'



THIS POINT LIES:
33' FNL - 1886' FEL
OF SECTION 10
ELEV. 1245'

THIS POINT LIES:
175' FNL - 1566' FEL
OF SECTION 10



PLAT SHOWING
PROPOSED PAD AND LEASE ROAD
IN THE NE/4 OF SECTION 10, T34S - R5W
HARPER COUNTY, KANSAS

				This plot was prepared exclusively for SANDRIDGE EXPLORATION & PRODUCTION, LLC OKLAHOMA CITY, OKLAHOMA		SCALE: 1" = 200'	
				and may not be relied upon by any other entity without the written consent of Topographic Land Surveyors of Oklahoma.		DATE: 10-3-13	
NO.	REVISION	DATE	BY	SURVEYING AND MAPPING BY TOPOGRAPHIC LAND SURVEYORS 6709 N. Classen, Okla. City, OK. 73116 (405) 843-4847 Certificate of Authorization No. LS-99, Exp. December 31, 2013		FILE: L4250A.DWG	
SURV. BY: RL 10-2-13						DRAWING NUMBER: 119024-L4-250-A	
DRAWN BY: SM						SHEET 1 OF 1	
APPROVED BY: WF							