

Phone 785-483-2025
Cell 785-324-1041

Home Office P.O. Box 32 Russell, KS 67665

No. 5018

Date	5/23/11	Sec.	31	Twp.	15	Range	10	County	Ellsworth	State	KS	On Location		Finish	11:00 PM	
Lease	ZVOLANEK		Well No.	31-1		Location Wilcox, Stone Rd, 1E, 1W, W+N into										
Contractor	Royal Drilling Rig #2										Owner					
Type Job	Production String										To Quality Drilling Cementing, Inc. You are hereby requested to rent cementing equipment and furnish cementer and helper to assist owner or contractor to do work as listed					
Hole Size	7 7/8		TD	3300'												
Csg.	5/8 11#		Depth	3300'		Charges To Benetto-Smully Oil Co.										
Tbg. Size											Depth					
Tool	Port Collar										Depth	601'				
Remant Left in Csg.	19.75'		Shoe Joint	19.75'		Street										
Meas Line											City	State				
The above was done to satisfaction and supervision of owner agent or contractor												Cement Amount Ordered 2255x Can 10% Salt 5% Gibrite				

EQUIPMENT

Pumptrk	9	No.	Cementar	2		Common
Bulktrk	2	No.	Driver	Brandon		Poz. Mix
Bulktrk	PU	No.	Driver	Rocky		Gal.

JOB SERVICES & REMARKS

Remarks:		Calcium
Rat Hole	30x	Hulls
Mouse Hole	20x 20x	Salt
Centralizers	1, 2, 5, 6, 3	Flowseal
Baskets	1, 6, 4	Kol-Seal
DIV or Port Collar	601'	Mud CLR 48
Pump	500 gal Mud Clear 48	300 gal
Mix	170x down 5/8	CFL-117 or CD110 CAF 38
Displace		Sand
Last Ring		Handling
Float Valve		Mileage

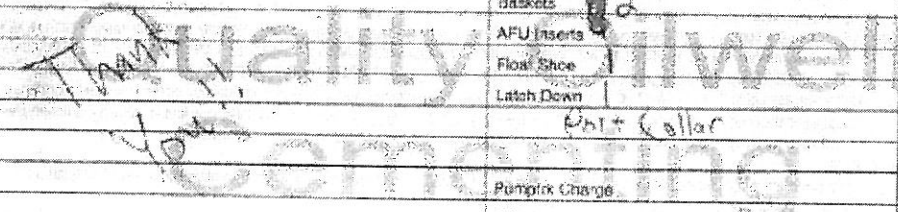
FLOAT EQUIPMENT

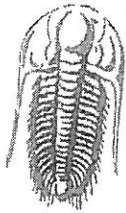
Guide Shoe	
Centralizer	4
Baskets	12
AFU Inserts	
Float Shoe	
Latch Down	

Port Collar

Pumptrk Charge		Tax
Mileage		Discount
		Total Charge

X Signature *[Handwritten Signature]*





TRILOBITE
TESTING, INC.

DRILL STEM TEST REPORT

Prepared For: Bennett & Shulte Oil Company

140 W. Wichita Avenue
Russell, KS 67665

ATTN: Frank Shulte

31-15-10Ellsworth,KS

Zvolanek 31-1

Start Date: 2011.05.23 @ 10:55:07

End Date: 2011.05.23 @ 15:54:37

Job Ticket #: 42393 DST #: 1

Trilobite Testing, Inc

PO Box 1733 Hays, KS 67601

ph: 785-625-4778 fax: 785-625-5620

Bennett & Shulte Oil Company

Zvolanek 31-1

31-15-10Ellsworth,KS

DST # 1

Arbuckle

2011.05.23



**TRILOBITE
TESTING, INC.**

DRILL STEM TEST REPORT

TOOL DIAGRAM

Bennett & Shulte Oil Company

Zvolanek 31-1

140 W. Wichita Avenue
Russell, KS 67665

31-15-10Ellsworth, KS

Job Ticket: 42393

DST#: 1

ATTN: Frank Shulte

Test Start: 2011.05.23 @ 10:55:07

Tool Information

Drill Pipe:	Length: 3233.00 ft	Diameter: 3.80 inches	Volume: 45.35 bbl	Tool Weight:	2000.00 lb
Heavy Wt. Pipe:	Length: 0.00 ft	Diameter: 2.70 inches	Volume: 0.00 bbl	Weight set on Packer:	25000.00 lb
Drill Collar:	Length: 0.00 ft	Diameter: 2.25 inches	Volume: 0.00 bbl	Weight to Pull Loose:	55000.00 lb
			<u>Total Volume: 45.35 bbl</u>	Tool Chased:	0.00 ft
Drill Pipe Above KB:	6.00 ft			String Weight: Initial:	50000.00 lb
Depth to Top Packer:	3255.00 ft			Final:	53000.00 lb
Depth to Bottom Packer:	3261.00 ft				
Interval between Packers:	6.00 ft				
Tool Length:	73.00 ft				
Number of Packers:	3	Diameter:	6.75 inches		

Tool Comments:

Tool Description	Length (ft)	Serial No.	Position	Depth (ft)	Accum. Lengths
Change Over Sub	1.00			3228.00	
Shut In Tool	5.00			3233.00	
Hydraulic tool	5.00			3238.00	
Jars	5.00			3243.00	
Safety Joint	2.00			3245.00	
Packer	5.00			3250.00	28.00 Bottom Of Top Packer
Packer	5.00			3255.00	
Stub	1.00			3256.00	
Perforations	1.00			3257.00	
Recorder	0.00	8673	Inside	3257.00	
Recorder	0.00	6668	Outside	3257.00	
Blank Off Sub	1.00			3258.00	
Blank Spacing	3.00			3261.00	6.00 Tool Interval
Packer	1.00			3262.00	
Recorder	0.00	6755	Below	3262.00	
Change Over Sub	1.00			3263.00	
Blank Spacing	31.00			3294.00	
Change Over Sub	1.00			3295.00	
Perforations	2.00			3297.00	
Anchor	3.00			3300.00	39.00 Bottom Packers & Anchor
Total Tool Length:	73.00				



**TRILOBITE
TESTING, INC**

DRILL STEM TEST REPORT

FLUID SUMMARY

Bennett & Shulte Oil Company

Zvolanek 31-1

140 W Wichita Avenue
Russell, KS 67665

31-15-10 Ellsworth, KS

Job Ticket: 42393

DST#: 1

ATTN: Frank Shulte

Test Start: 2011.05.23 @ 10:55:07

Mud and Cushion Information

Mud Type: Gel Chem

Mud Weight: 9.00 lb/gal

Viscosity: 52.00 sec/qt

Water Loss: 8.79 in³

Resistivity: ohmm

Salinity: 4000.00 ppm

Filter Cake: inches

Cushion Type:

Cushion Length:

Cushion Volume:

Gas Cushion Type:

Gas Cushion Pressure:

ft

bbbl

psig

Oil AF:

Water Salinity:

36 deg AF

16000 ppm

Recovery Information

Recovery Table

Length ft	Description	Volume bbl
780.00	M/W/Oil Scum	10.941
180.00	OCMV-20%O-75%V-5%MI	2.525
135.00	Free Oil	1.894

Total Length: 1095.00 ft Total Volume: 15.360 bbl

Num Fluid Samples: 0

Num Gas Bombs: 0

Serial #:

Laboratory Name:

Laboratory Location:

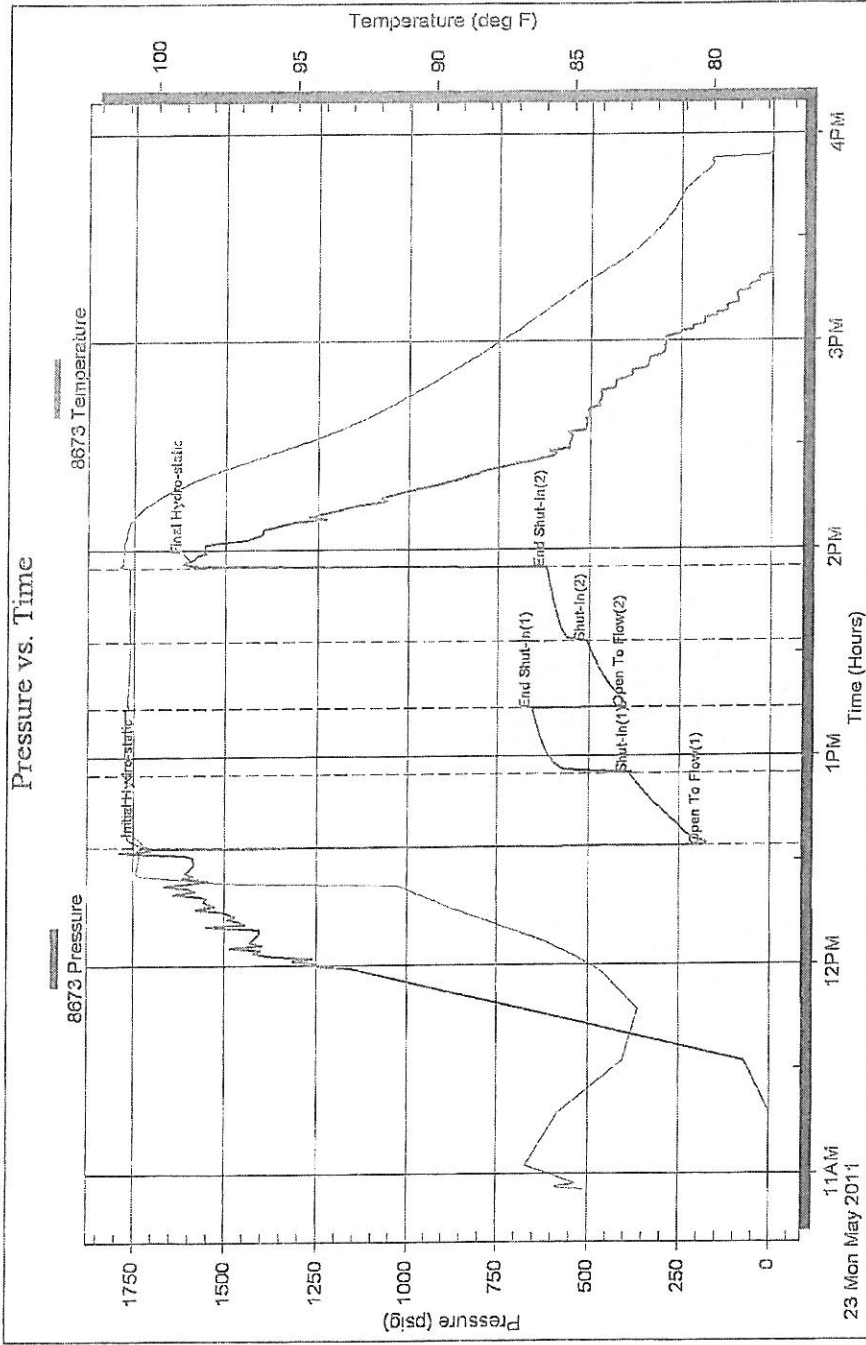
Recovery Comments:

Serial #: 8673

Inside Bennett & Shulte Oil Company

31-15-10Elsworth,KS

EST Test Number: 1



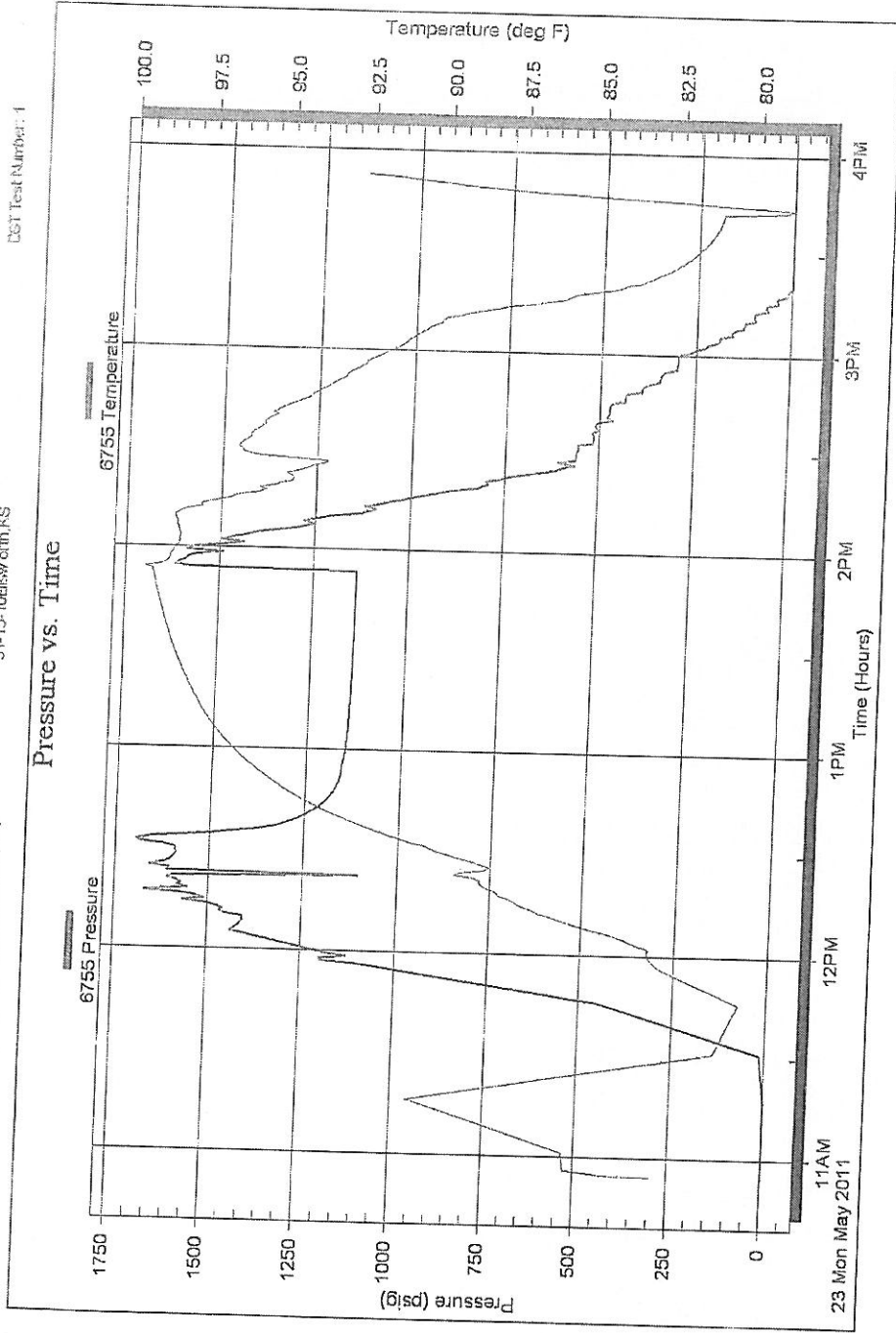
Serial #: 6755

Eslow (Stratbight & Shutte Oil Company

31-15-10B15v or th KS

DOT Test Number: 1

Pressure vs. Time



Trilobite Testing, Inc

Ref. No: 42393

