



DRILL STEM TEST REPORT

Prepared For: **American Warrior, Inc.**

3118 Cummings Rd.
PO Box 399
Garden City, KS 67846

ATTN: Jason Alm

Filbert #1-24

24-18s-22w Ness, KS

Start Date: 2013.10.17 @ 12:42:00

End Date: 2013.10.17 @ 20:07:30

Job Ticket #: 55760 DST #: 1

Trilobite Testing, Inc

PO Box 362 Hays, KS 67601

ph: 785-625-4778 fax: 785-625-5620

Printed: 2013.10.18 @ 09:50:33



TRILOBITE TESTING, INC.

DRILL STEM TEST REPORT

American Warrior, Inc.
 3118 Cummings Rd.
 PO Box 399
 Garden City, KS 67846
 ATTN: Jason Alm

24-18s-22w Ness, KS

Filbert #1-24

Job Ticket: 55760

DST#: 1

Test Start: 2013.10.17 @ 12:42:00

GENERAL INFORMATION:

Formation: **Mississippi**

Deviated: No Whipstock: ft (KB)

Time Tool Opened: 14:35:30

Time Test Ended: 20:07:30

Test Type: Conventional Bottom Hole (Initial)

Tester: Brannan L

Unit No: 67

Interval: 4262.00 ft (KB) To 4268.00 ft (KB) (TVD)

Reference Elevations: 2175.00 ft (KB)

Total Depth: 4268.00 ft (KB) (TVD)

2169.00 ft (CF)

Hole Diameter: 7.88 inches Hole Condition: Fair

KB to GR/CF: 6.00 ft

Serial #: 8679 Inside

Press @ Run Depth: 71.76 psig @ 4264.00 ft (KB)

Capacity: 8000.00 psig

Start Date: 2013.10.17 End Date: 2013.10.17

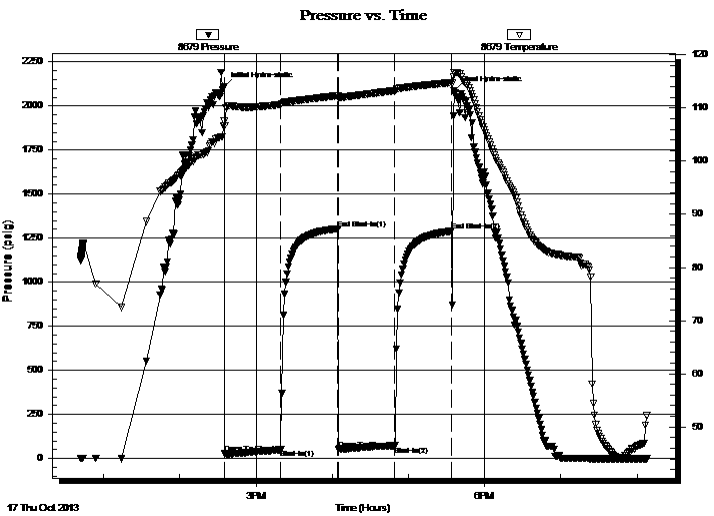
Last Calib.: 2013.10.17

Start Time: 12:42:01 End Time: 20:07:30

Time On Btm: 2013.10.17 @ 14:35:00

Time Off Btm: 2013.10.17 @ 17:36:00

TEST COMMENT: 45- IF- Built slow ly to 3"
 45- IS- No blow
 45- FF- Built slow ly to 2"
 45- FS- No blow



PRESSURE SUMMARY

Time (Min.)	Pressure (psig)	Temp (deg F)	Annotation
0	2109.11	107.52	Initial Hydro-static
1	27.40	106.65	Open To Flow (1)
45	49.24	110.66	Shut-In(1)
90	1301.27	112.31	End Shut-In(1)
90	53.84	111.91	Open To Flow (2)
134	71.76	113.26	Shut-In(2)
179	1290.18	114.78	End Shut-In(2)
181	2086.59	116.54	Final Hydro-static

Recovery

Length (ft)	Description	Volume (bbl)
3.00	O, 100%O	0.01
122.00	O, 10%O 15%M 75%W	0.66

Gas Rates

Choke (inches)	Pressure (psig)	Gas Rate (Mcf/d)



**TRILOBITE
TESTING, INC.**

DRILL STEM TEST REPORT

TOOL DIAGRAM

American Warrior, Inc.

24-18s-22w Ness, KS

3118 Cummings Rd.
PO Box 399
Garden City, KS 67846
ATTN: Jason Alm

Filbert #1-24

Job Ticket: 55760

DST#: 1

Test Start: 2013.10.17 @ 12:42:00

Tool Information

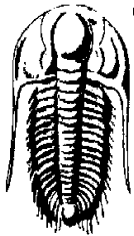
Drill Pipe:	Length: 4127.00 ft	Diameter: 3.75 inches	Volume: 56.38 bbl	Tool Weight: 2500.00 lb
Heavy Wt. Pipe:	Length: ft	Diameter: 2.75 inches	Volume: - bbl	Weight set on Packer: 25000.00 lb
Drill Collar:	Length: 118.00 ft	Diameter: 2.25 inches	Volume: 0.58 bbl	Weight to Pull Loose: 68000.00 lb
			Total Volume: - bbl	Tool Chased 0.00 ft
Drill Pipe Above KB:	10.00 ft			String Weight: Initial 62000.00 lb
Depth to Top Packer:	4262.00 ft			Final 63000.00 lb
Depth to Bottom Packer:	ft			
Interval between Packers:	6.00 ft			
Tool Length:	33.00 ft			
Number of Packers:	2	Diameter: 6.75 inches		

Tool Comments:

Tool Description	Length (ft)	Serial No.	Position	Depth (ft)	Accum. Lengths
------------------	-------------	------------	----------	------------	----------------

Change Over Sub	1.00			4236.00	
Shut In Tool	5.00			4241.00	
Hydraulic tool	5.00			4246.00	
Jars	5.00			4251.00	
Safety Joint	2.00			4253.00	
Packer	5.00			4258.00	27.00 Bottom Of Top Packer
Packer	4.00			4262.00	
Stubb	1.00			4263.00	
Perforations	1.00			4264.00	
Recorder	0.00	6625	Outside	4264.00	
Recorder	0.00	8679	Inside	4264.00	
Bullnose	4.00			4268.00	6.00 Bottom Packers & Anchor

Total Tool Length: 33.00



**TRILOBITE
TESTING, INC.**

DRILL STEM TEST REPORT

FLUID SUMMARY

American Warrior, Inc.

24-18s-22w Ness, KS

3118 Cummings Rd.
PO Box 399
Garden City, KS 67846
ATTN: Jason Alm

Filbert #1-24

Job Ticket: 55760

DST#: 1

Test Start: 2013.10.17 @ 12:42:00

Mud and Cushion Information

Mud Type: Gel Chem

Cushion Type:

Oil API:

deg API

Mud Weight: 9.00 lb/gal

Cushion Length:

ft

Water Salinity:

23000 ppm

Viscosity: 48.00 sec/qt

Cushion Volume:

bbf

Water Loss: 8.39 in³

Gas Cushion Type:

Resistivity: ohm.m

Gas Cushion Pressure:

psig

Salinity: 7400.00 ppm

Filter Cake: inches

Recovery Information

Recovery Table

Length ft	Description	Volume bbf
3.00	O, 100%O	0.015
122.00	OCMCW, 10%O 15%M 75%W	0.661

Total Length: 125.00 ft Total Volume: 0.676 bbf

Num Fluid Samples: 0

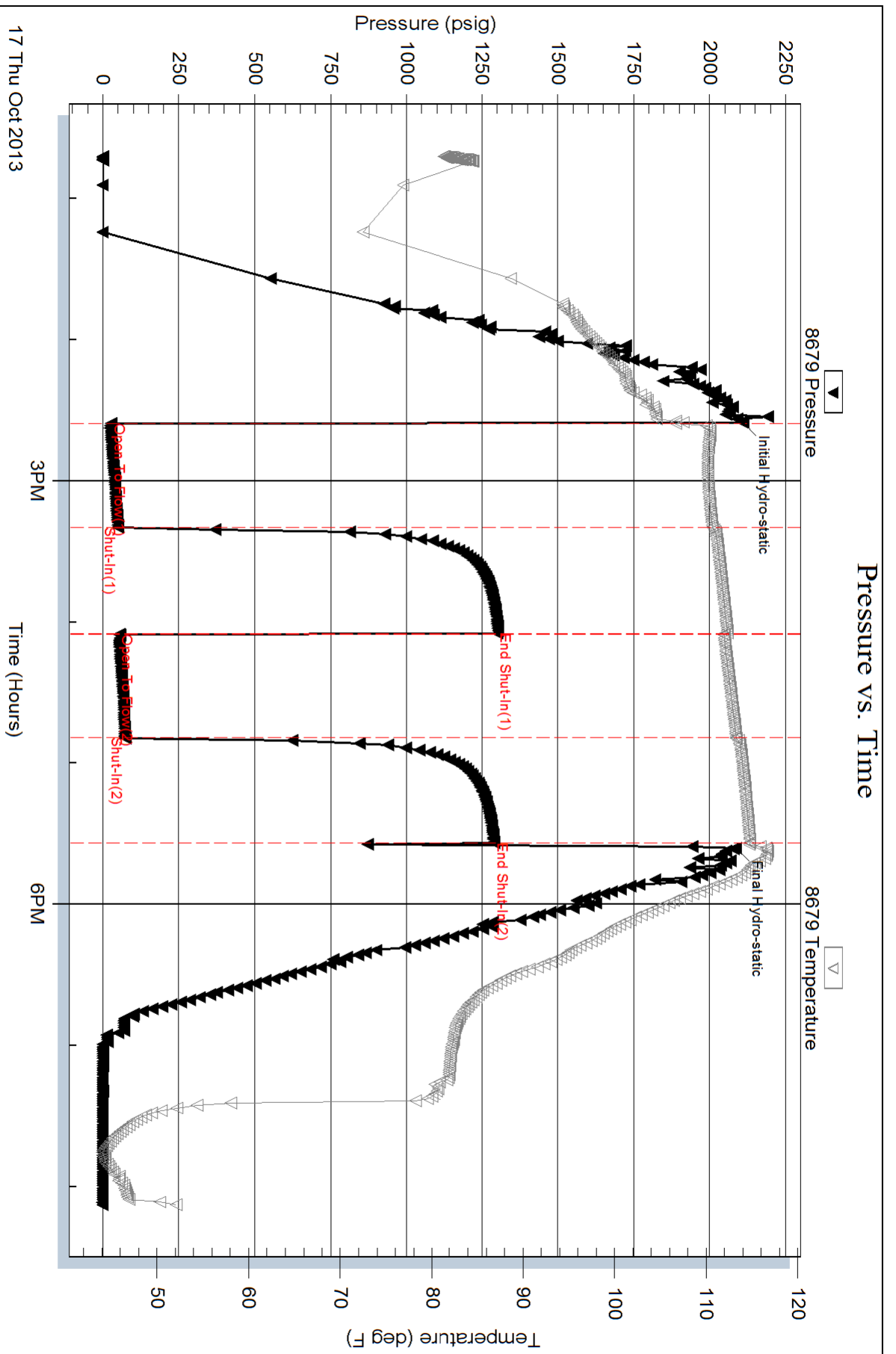
Num Gas Bombs: 0

Serial #:

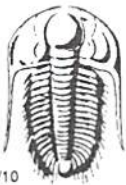
Laboratory Name:

Laboratory Location:

Recovery Comments:



17 Thu Oct 2013



TRILOBITE TESTING INC.

1515 Commerce Parkway • Hays, Kansas 67601

Test Ticket

NO. 55760

Well Name & No. Filbert # 1-24 Test No. 1 Date 10/17/13
 Company American Warrior, Inc. Elevation 2175 KB 2169 GL
 Address 3118 Cummings Rd. PO Box 399 Garden City, KS 67846
 Co. Rep / Geo. Jason Alm Rig Petromark #1
 Location: Sec. 24 Twp. 18s Rge. 22w Co. Ness State KS

Interval Tested 4262-4268 Zone Tested Miss
 Anchor Length 6' Drill Pipe Run 4127 Mud Wt. 9.2
 Top Packer Depth 4257 Drill Collars Run 118 Vis 48
 Bottom Packer Depth 4262 Wt. Pipe Run --- WL 8.4
 Total Depth 4268 Chlorides 7400 ppm System LCM ---

Blow Description IF - Slowly built to 3"
ISI - No blow
FF - Slowly built to 2"
FSI - No blow

Rec	Feet of	%gas	%oil	%water	%mud
<u>3</u>	<u>0</u>	<u>100</u>	<u>0</u>	<u>0</u>	<u>0</u>
<u>122</u>	<u>OCMCW</u>	<u>10</u>	<u>0</u>	<u>75</u>	<u>15</u>
Rec	Feet of	%gas	%oil	%water	%mud
Rec	Feet of	%gas	%oil	%water	%mud

Rec Total 125' BHT 115° Gravity --- API RW .44 @ 51 °F Chlorides 23,000 ppm

(A) Initial Hydrostatic 2109 Test 1250 T-On Location 1145
 (B) First Initial Flow 27 Jars 250 T-Started 1242
 (C) First Final Flow 49 Safety Joint 75 T-Open 1435
 (D) Initial Shut-In 1301 Circ Sub _____ T-Pulled 1735
 (E) Second Initial Flow 54 Hourly Standby _____ T-Out 2009
 (F) Second Final Flow 72 Mileage 110 RT 170.50 Comments _____
 (G) Final Shut-In 1290 Sampler _____
 (H) Final Hydrostatic 2087 Straddle _____ Ruined Shale Packer _____
 Shale Packer _____ Ruined Packer _____

Initial Open 45 Extra Packer _____ Extra Copies _____
 Initial Shut-In 45 Extra Recorder _____ Sub Total 0
 Final Flow 45 Day Standby _____ Total 1745.50
 Final Shut-In 45 Accessibility _____ MP/DST Disc't _____
 Sub Total 1745.50

Approved By _____ Our Representative Brannon L

Trilobite Testing Inc. shall not be liable for damaged of any kind of the property or personnel of the one for whom a test is made, or for any loss suffered or sustained, directly or indirectly, through the use of its equipment, or its statements or opinion concerning the results of any test, tools lost or damaged in the hole shall be paid for at cost by the party for whom the test is made.