



GEOLOGIST'S REPORT

OPERATOR **COBALT ENERGY, LLC**

LEASE **MARX 'A' # 1-24**

LOCATION **833 FSL & 763 FEL**

SEC. **24** TWSP **6S** RGE **26W**

COUNTY **SHERIDAN** STATE **KANSAS**

FIELD **ALLODIUM**

CONTRACTOR **Murfin Drilling Company** RIG NO. **16**

COMMENCED **2 January 2014** COMPLETED **8 January 2014**

MUD DISPLACED **3108** MUD TYPE **Chemical**

DRILLING TIME KEPT FROM **3400** TO **3933**

SAMPLES SAVED FROM **3400** TO **3933**

SAMPLES EXAMINED FROM **3400** TO **3933**

GEOLOGICAL SUPERVISION FROM **3383** TO **3933**

GEOLOGIST ON WELL **Paul Gunzelman**

FORMATION NAME	LOG		SAMPLE	
	TOP	DATUM	TOP	DATUM
Stone Corral	2168	+435	2169	+434
Base/ Anhydrite	2202	+401	2204	+399
Topoka	3480	-877	3480	-877
Heebner Shale	3638	-1035	3640	-1037
Toronto	3658	-1055	3661	-1058
Lansing	3674	-1071	3677	-1074
Stark Shale	3830	-1227	3832	-1229
Base/Kansas City	3864	-1261	3866	-1263
Total Depth	3932	-1329	3933	-1330

ELEVATIONS

KB **2603 Ft.**

GL **2598 Ft.**

ALL MEASUREMENTS FROM K.B.

CASING RECORD

Conductor **None**

Surface **8 5/8" @ 316'**

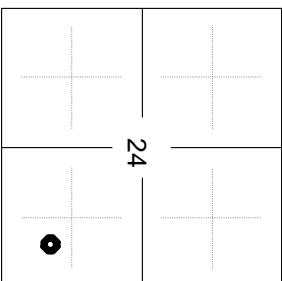
Production **None**

ELECTRICAL SURVEYS

Pioneer Energy Services

Comp. Neutron Density

Dual Induction



REMARKS

API 15-179-21346-00-00

Drilling Fluids: Mud-Co./Service Mud, Inc. (Gary Schmidtberger, engineer)

Drill Stem Testing: Trilobite Testing, Inc. (Chuck Kreutzer, tester)

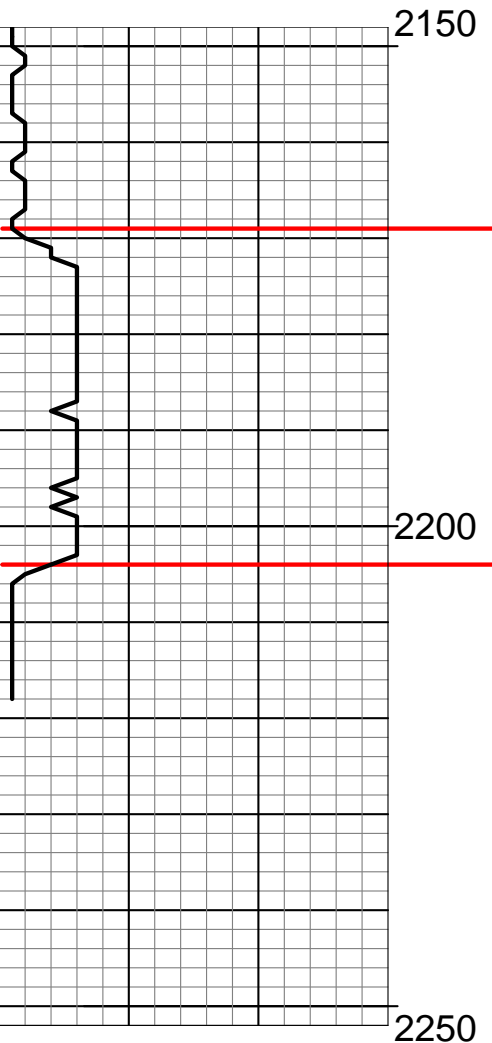
Gas Trailer: No Gas Trailer

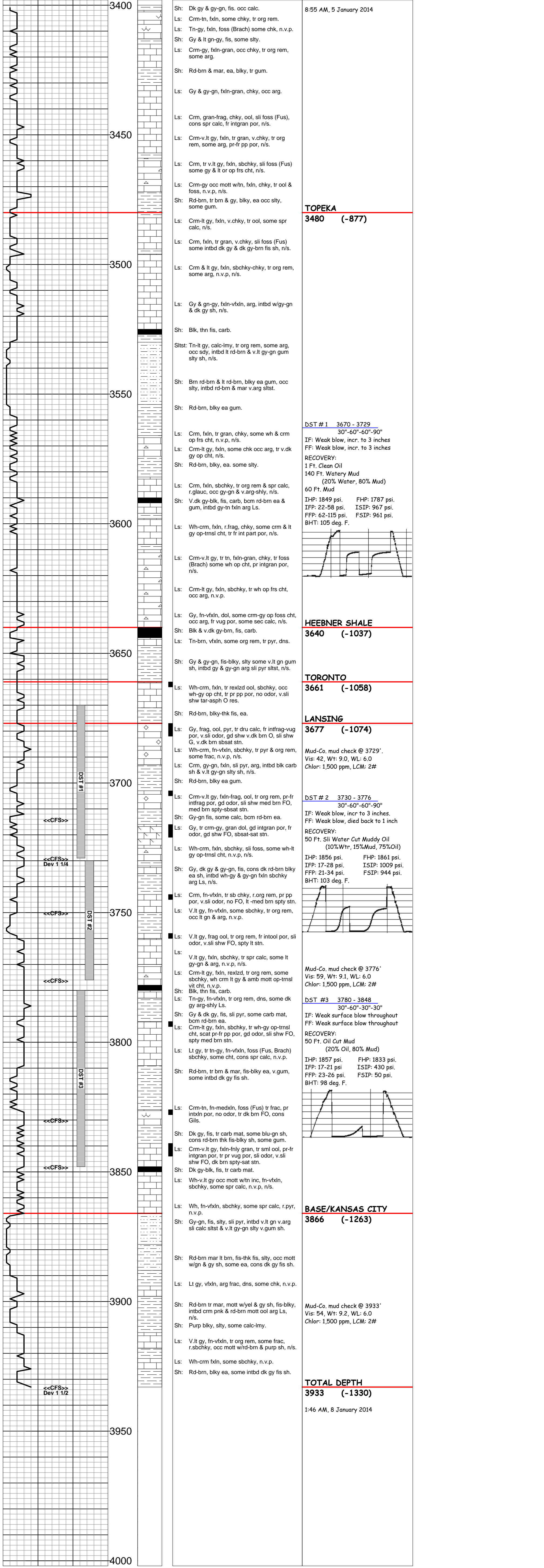
Reserve Pit Chlorides: 6,000 PPM

REMARKS	SAMPLE DESCRIPTIONS	SHOWS	LITHOLOGY	DEPTH	DRILL TIME (MIN/FT)
---------	---------------------	-------	-----------	-------	---------------------

STONE CORRAL
2169 (+434)

BASE/ANHYDRITE
2204 (+399)





Operator: COBALT ENERGY, LLC
 Lease: MARX 'A' # 1-24
 Location: 833 FSL & 763 FEL SEC. 24 TWSP 6S RGE 26W
 County: SHERIDAN State: KANSAS