

QUALITY OILWELL CEMENTING, INC.

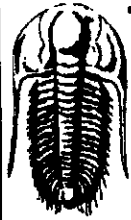
Federal Tax I.D.# 20-2886107

Phone 785-483-2025
Cell 785-324-1041

Home Office P.O. Box 32 Russell, KS 67665

No. 7291

Date	8-17-13	Sec.	41	Twp.	9	Range	19	County	Rooks	State	KS	On Location		Finish	10:45				
Location								Zurich 5 N 3/8 W S Fns											
Lease	McClellan			Well No.	2			Owner											
Contractor	Discovery #4			To Quality Oilwell Cementing, Inc.								You are hereby requested to rent cementing equipment and furnish cementer and helper to assist owner or contractor to do work as listed.							
Type Job	Surface			Charge To								Zinszer Owl							
Hole Size	12 1/4			T.D.	1425'			Street											
Csg.	8 5/8			Depth	1425'			City								State			
Tbg. Size				Depth				The above was done to satisfaction and supervision of owner agent or contractor.											
Tool				Depth				Cement Amount Ordered								550 com 3% CC 2% Gel 1/4 Flo			
Cement Left in Csg.	12'			Shoe Joint	12'			Cement Amount Ordered								550 com 3% CC 2% Gel 1/4 Flo			
Meas Line				Displace	90 bbl			Common								550			
EQUIPMENT																			
Pumptrk	15	No.		Cementer	Nick Brett			Poz. Mix											
				Helper															
Bulktrk	8	No.		Driver	Lonnie W			Gel.								10			
				Driver															
Bulktrk	19	No.		Driver	Lonnie M			Calcium								20			
				Driver															
JOB SERVICES & REMARKS												Hulls							
Remarks:												Salt							
Rat Hole												Flowseal							
Mouse Hole												Kol-Seal							
Centralizers												Mud CLR 48							
Baskets - 85												CFL-117 or CD110 CAF 38							
D/V or Port Collar												Sand							
												Handling				580			
												Mileage				8 1/2			
Cement												8 1/2				FLOAT EQUIPMENT			
												Guide Shoe							
												Centralizer							
												Baskets - 1							
												AFU Inserts							
												Float Shoe							
												Latch Down							
												Baffle Plate - 1							
												Rubber Plug - 1							
												Pumptrk Charge				Long Surface			
												Mileage				36			
																Tax			
																Discount			
																Total Charge			
Signature												T. H. [Signature]							



TRILOBITE TESTING, INC.

DRILL STEM TEST REPORT

Zinszer Oil Co INC

4-9s-19w

Po Box 211
Hays Ks 67601

McClellan #2

Job Ticket: 041752 DST#: 1

ATTN: Marc Downing

Test Start: 2013.08.20 @ 18:28:28

GENERAL INFORMATION:

Formation: **Toronto-LKC-C**

Deviated: No Whipstock: ft (KB)

Time Tool Opened: 20:18:58

Time Test Ended: 00:48:28

Test Type: Conventional Bottom Hole (Initial)

Tester: Jeff Brown

Unit No: 67

Interval: **3144.00 ft (KB) To 3237.00 ft (KB) (TVD)**

Reference Elevations: 2000.00 ft (KB)

Total Depth: 3237.00 ft (KB) (TVD)

1993.00 ft (CF)

Hole Diameter: 7.88 inches Hole Condition: Good

KB to GR/CF: 7.00 ft

Serial #: 6625

Outside

Press@RunDepth: 153.88 psig @ 3214.00 ft (KB)

Capacity: 8000.00 psig

Start Date: 2013.08.20 End Date: 2013.08.21

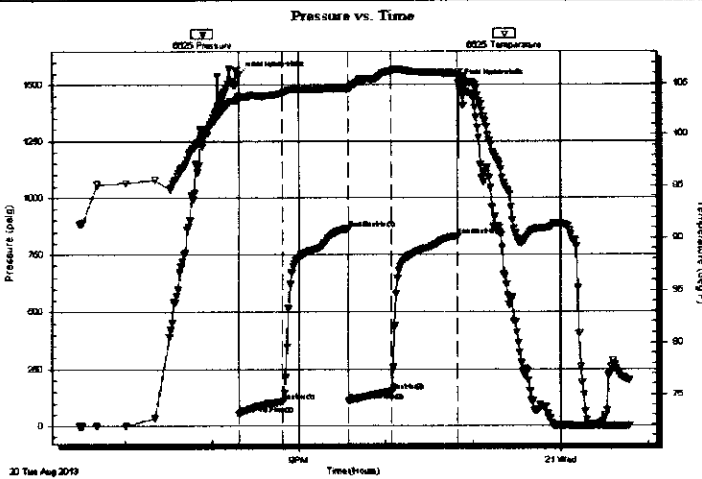
Last Calib.: 2013.08.21

Start Time: 18:28:29 End Time: 00:47:28

Time On Btm: 2013.08.20 @ 20:18:28

Time Off Btm: 2013.08.20 @ 22:49:58

TEST COMMENT: IFF=Good blow BOB in 13 min
IS=Weak surface blow back built to 1/8 in died out in 23-1/2 min
FFP=Good blow BOB in 7 min
FS=Weak surface blow back built to 3/4 in



PRESSURE SUMMARY

Time (Min.)	Pressure (psig)	Temp (deg F)	Annotation
0	1544.87	103.67	Initial Hydro-static
1	53.42	103.46	Open To Flow (1)
31	109.14	104.08	Shut-in(1)
76	865.42	104.49	End Shut-in(1)
76	109.67	104.41	Open To Flow (2)
106	153.88	106.20	Shut-in(2)
151	832.86	105.97	End Shut-in(2)
152	1508.19	106.13	Final Hydro-static

Recovery

Length (ft)	Description	Volume (bbl)
62.00	SOCMV 5%O 40%M 55%W	0.60
63.00	SOCGVM 5%O 10%G 25%W 60%M	0.88
94.00	HOCGVM 5%G 5%W 35%O 55%M	1.32
31.00	Gassy Oil 10%G 90%O	0.43
0.00	220-GIP	0.00

Gas Rates

	Choke (inches)	Pressure (psig)	Gas Rate (Mcf/d)

Trilobite Testing, Inc

Ref. No: 041752

Printed: 2013.08.21 @ 01:11:23

*250' total
Flow*

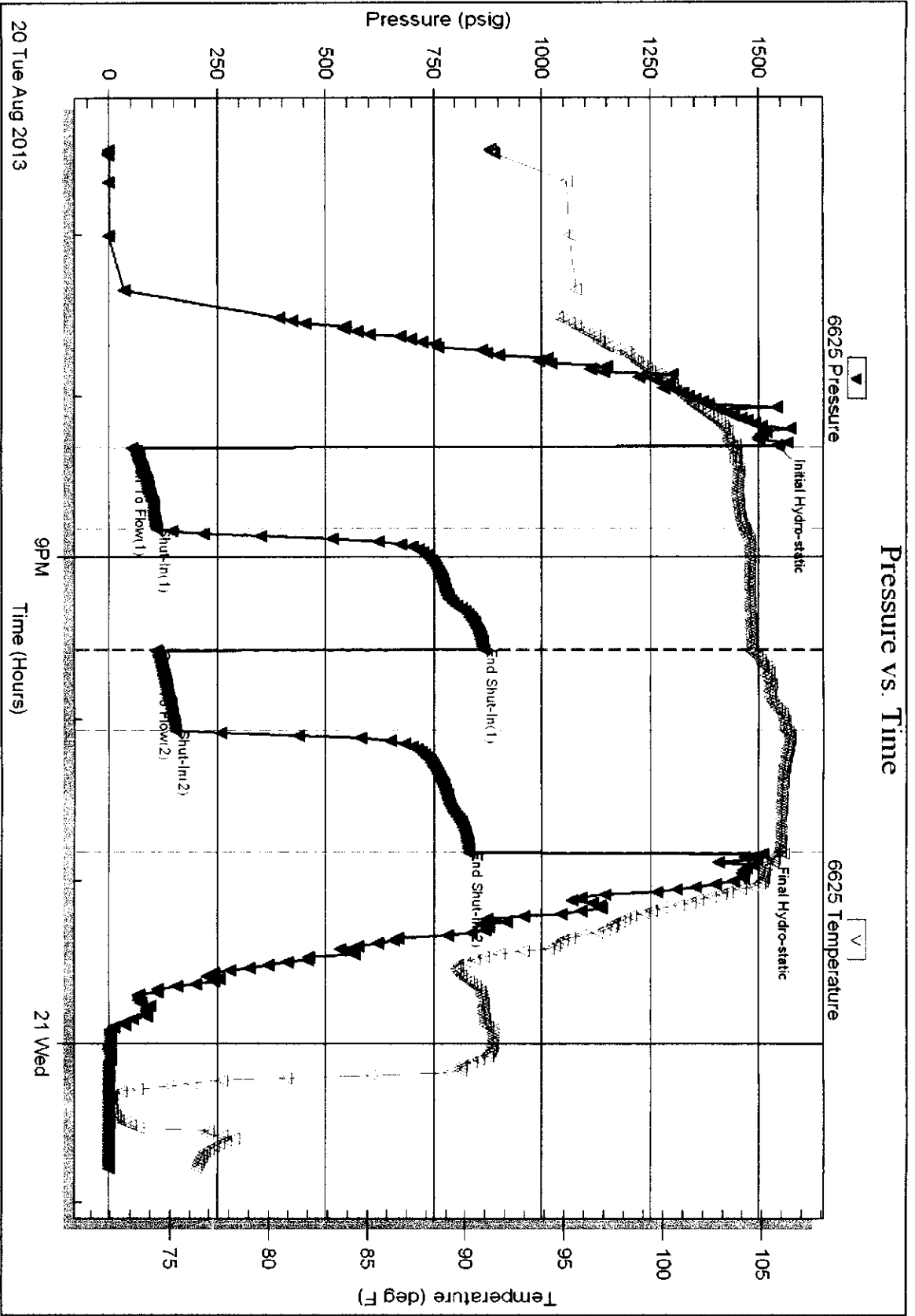
Serial #: 6625

Outside Zinszer Oil Co INC

McClellan #2

DST Test Number: 1

Pressure vs. Time





P. O. Box 466
 Ness City, KS 67560
 Off: 785-798-2300



Invoice

DATE	INVOICE #
8/22/2013	24898

BILL TO
Zinszer Oil Co. Inc. PO Box 211 Hays, KS 67601-0211

58020-01
 3350

- Acidizing
- Cement
- Tool Rental

TERMS	Well No.	Lease	County	Contractor	Well Type	Well Category	Job Purpose	Operator
Net 30	#2	McClellan	Rooks	Discovery Drilling...	Oil	Development	LongString	Nick
PRICE REF.	DESCRIPTION				QTY	UM	UNIT PRICE	AMOUNT
575D	Mileage - 1 Way				40	Miles	6.00	240.00
578D-L	Pump Charge - Long String - 3430 Feet				1	Job	1,500.00	1,500.00
221	Liquid KCL (Clayfix)				2	Gallon(s)	25.00	50.00T
281	Mud Flush				500	Gallon(s)	1.25	625.00T
290	D-Air				2	Gallon(s)	42.00	84.00T
402-5	5 1/2" Centralizer				6	Each	70.00	420.00T
403-5	5 1/2" Cement Basket				1	Each	285.00	285.00T
406-5	5 1/2" Latch Down Plug & Baffle				1	Each	275.00	275.00T
407-5	5 1/2" Insert Float Shoe With Auto Fill				1	Each	375.00	375.00T
419-5	5 1/2" Rotating Head Rental				1	Each	200.00	200.00T
325	Standard Cement				175	Sacks	14.00	2,450.00T
276	Flocele				50	Lb(s)	2.00	100.00T
283	Salt				900	Lb(s)	0.20	180.00T
284	Calseal				8	Sack(s)	35.00	280.00T
286	Halad-1 (Halad 9)				80	Lb(s)	8.00	640.00T
581D	Service Charge Cement				175	Sacks	2.00	350.00
583D	Drayage				548.5	Ton Miles	1.00	548.50
	Subtotal							8,602.50
	Sales Tax Rooks County						6.15%	366.79

We Appreciate Your Business!	Total	\$8,969.29
-------------------------------------	--------------	------------

JOB LOG

SWIFT Services, Inc.

DATE 8-22-13 PAGE NO. 1

CUSTOMER Ziaser Oil Co WELL NO. #2 LEASE McClellan JOB TYPE Longstring TICKET NO. 24898

CHART NO.	TIME	RATE (BPM)	VOLUME (BBL) (GAL)	PUMPS		PRESSURE (PSI)		DESCRIPTION OF OPERATION AND MATERIALS
				T	C	TUBING	CASING	
	0400							on loc w/FE
								RTD 3430'
								5 1/2" x 14 # x 3429' x 20'
								Cent 1, 3, 5, 7, 9, 11
								Back 12
	0500							Start FE
	0650							Break Circ
	0705	2	7/4					Plug RH/MAH 30/15 sks EA-2
	0715	5	0			200		Start 500 gal Mud Flush
		5	20/0			200		Start 20 bbl KCL Flush
		5	20/0			200		Start 130 sks EA-2
	0733		31					End Cement
								Wash Pth
								Drop LD Plug
	0737	6	0			150		Start Displacement
	0746	5	54			200		Catch Cement
	0751		83			200/1400		Land Plug
								Release Pressure
								Float Hold

Thank you

Nick, David E. & T. SNUL