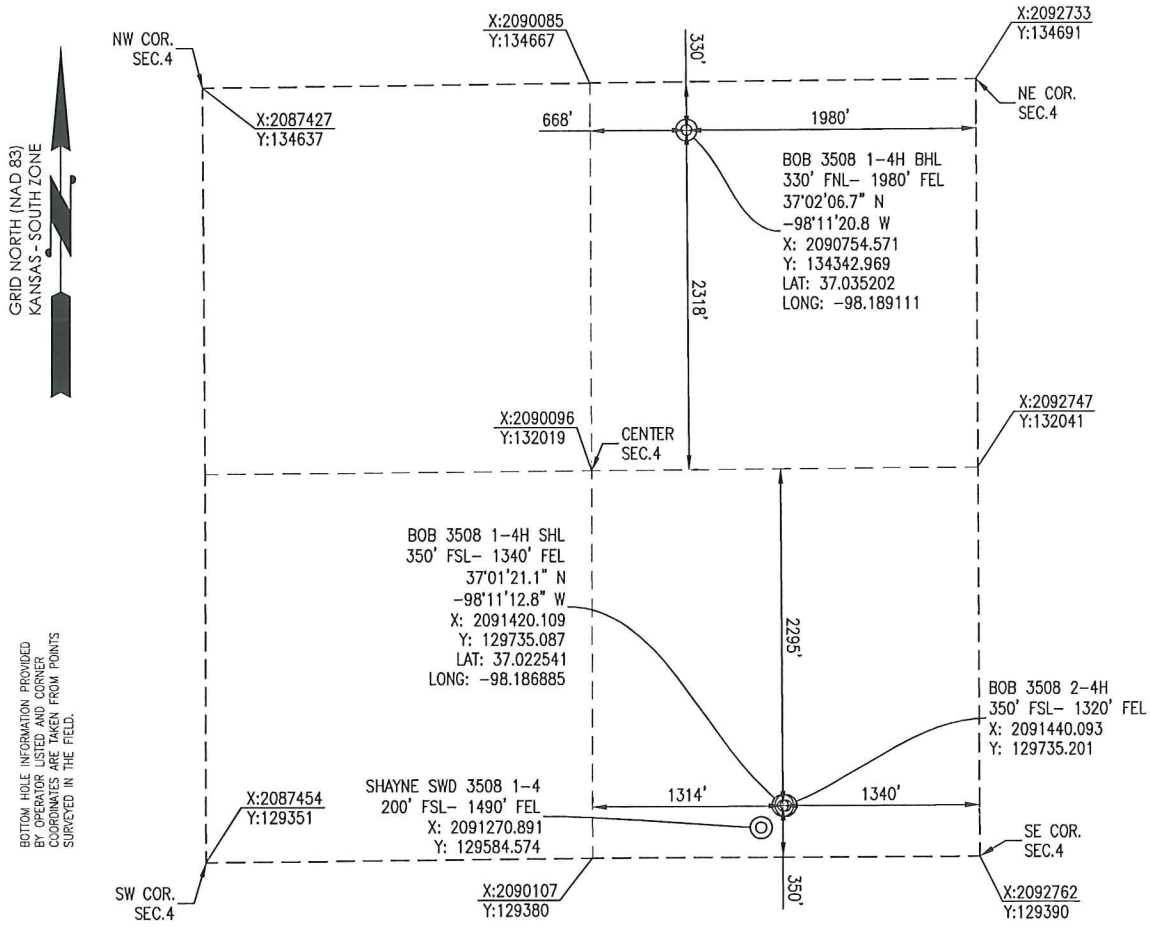




170 Commerce Road, Building 201
 Conway, Arkansas 72032
 501.328.3316 | 501.328.3325 f
 www.craftontull.com

HARPER COUNTY, KANSAS
 350' FSL- 1340' FEL SECTION 4 TOWNSHIP 35S RANGE 08W 6TH P.M.



BOTTOM HOLE INFORMATION PROVIDED BY OPERATOR LISTED AND CORNER COORDINATES ARE TAKEN FROM POINTS SURVEYED IN THE FIELD.

OPERATOR: SANDRIDGE ENERGY, INC.

WELL NO: 1-4H

ELEVATION:
 1274' GR. AT STAKE

LEASE NAME: BOB 3508

TOPOGRAPHIC & VEGETATION: LOCATION FELL IN A FIELD

GOOD DRILL SITE: YES

REFERENCE STAKES OR ALTERNATE LOCATION STAKES SET: NONE

BEST ACCESSIBILITY TO LOCATION: SOUTH OR EAST LINE

DISTANCE & DIRECTION

FROM HWY JCT OR TOWN: FROM THE JCT. OF KS-2 & 80 AVE (±8.5 MILES WEST OF ANTHONY, KS) TRAVEL SOUTH ON 80 AVE/SW 80 AVE FOR ±9.0 MILES TO THE SOUTHEAST CORNER OF SECTION 4, T35S-R08W.

(THE FOLLOWING INFORMATION WAS GATHERED USING A GPS RECEIVER ACCURACY ±2.3 METERS)

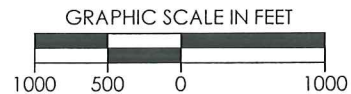
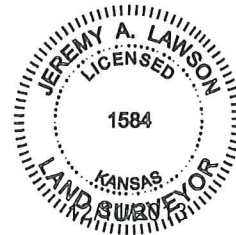
GPS DATUM: NAD-27
 LAT: 37.022541
 LONG: -98.186885

STATE PLANE COORDINATES:
 ZONE: KS-SOUTH NAD-27
 X: 2091420.109
 Y: 129735.087

DATE STAKED: 12-11-2013

GENERAL NOTES:

THE TIES AND FOOTAGES SHOWN ON THIS PLAT ARE FROM LINES OF OCCUPATION FROM A SURVEY MADE ON THE GROUND AND / OR BEARING AND DISTANCES FROM THE GENERAL LAND OFFICE PLAT OF THE AREA SHOWN AND MAY NOT BE THE ACTUAL PROPERTY CORNERS. THIS PLAT DOES NOT REPRESENT A TRUE BOUNDARY SURVEY. DRILL SITE CONDITION DETERMINATIONS WERE MADE BY SANDRIDGE ENERGY INC. REPRESENTATIVES.

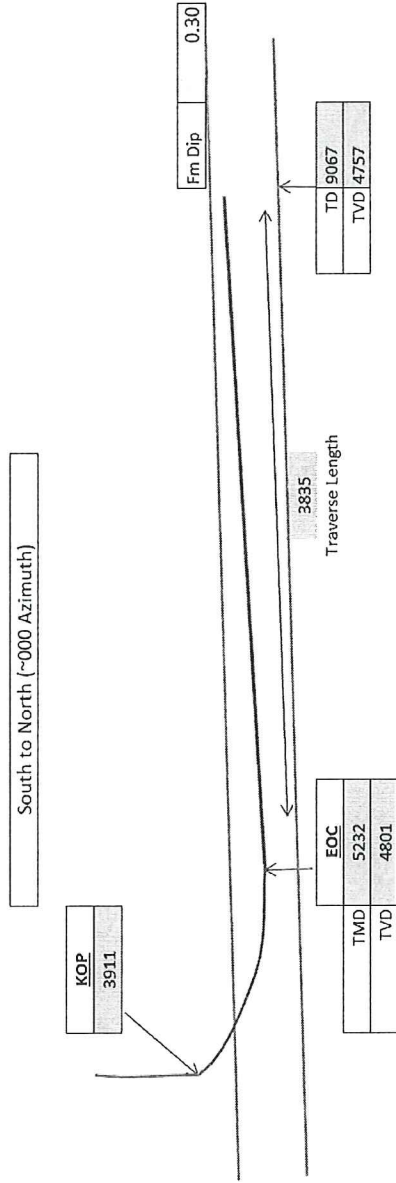


REVISION	SandRidge		
	"BOB 3508 1-4H" PART OF THE SE1/4 OF SECTION 4, T-35-S, R-08-W PROPOSED DRILL SITE HARPER COUNTY, KANSAS		
	SCALE: 1" = 1000'	DRAWN BY: MF	SHEET NO.: 1 OF 4
	PLLOT DATE: 12-11-2013		

Target Line	4.810
TVD @ 0' VS	90.65
INC	

	SHL	BHL
X NAD 27	2,091,420	2,090,754
Y NAD 27	129,735	134,342

Total VS	4,654.89
EOC (MD)	5,231.90
EOC (TVD)	4,800.69
KOP	3,911.11
Azimuth	351.77
Traverse Length	3,834.76
TD (MD)	9,066.65
TVD @ TD	4,757.19
TVD displacement f/ EOC to TD	43.50



Operator
SandRidge Energy
Well Name and Number
Bob 3508 1-4H

Well Surface Location
350' FSL & 1340' FEL of 4-35S-8W
Well Bottom Hole Location
330' FNL & 1980' FEL of 4-35S-8W
County and State
Harper County, Kansas

Bob 3508 1-4H
Lease Information Sheet

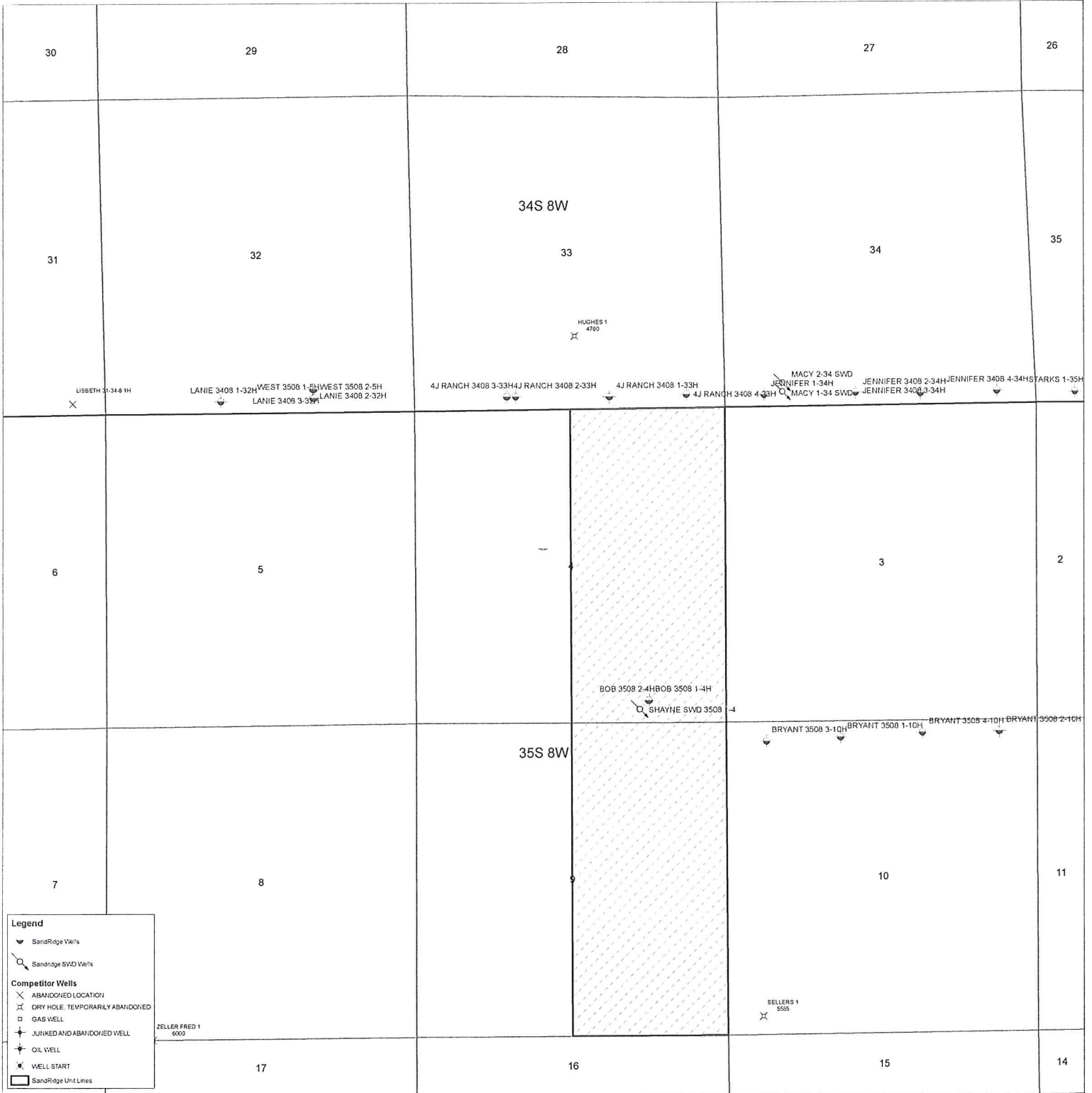
Unit Description:

E2 of Section 4, 35S-08W and
E2 of Section 9-35S-08W
Harper County, KS

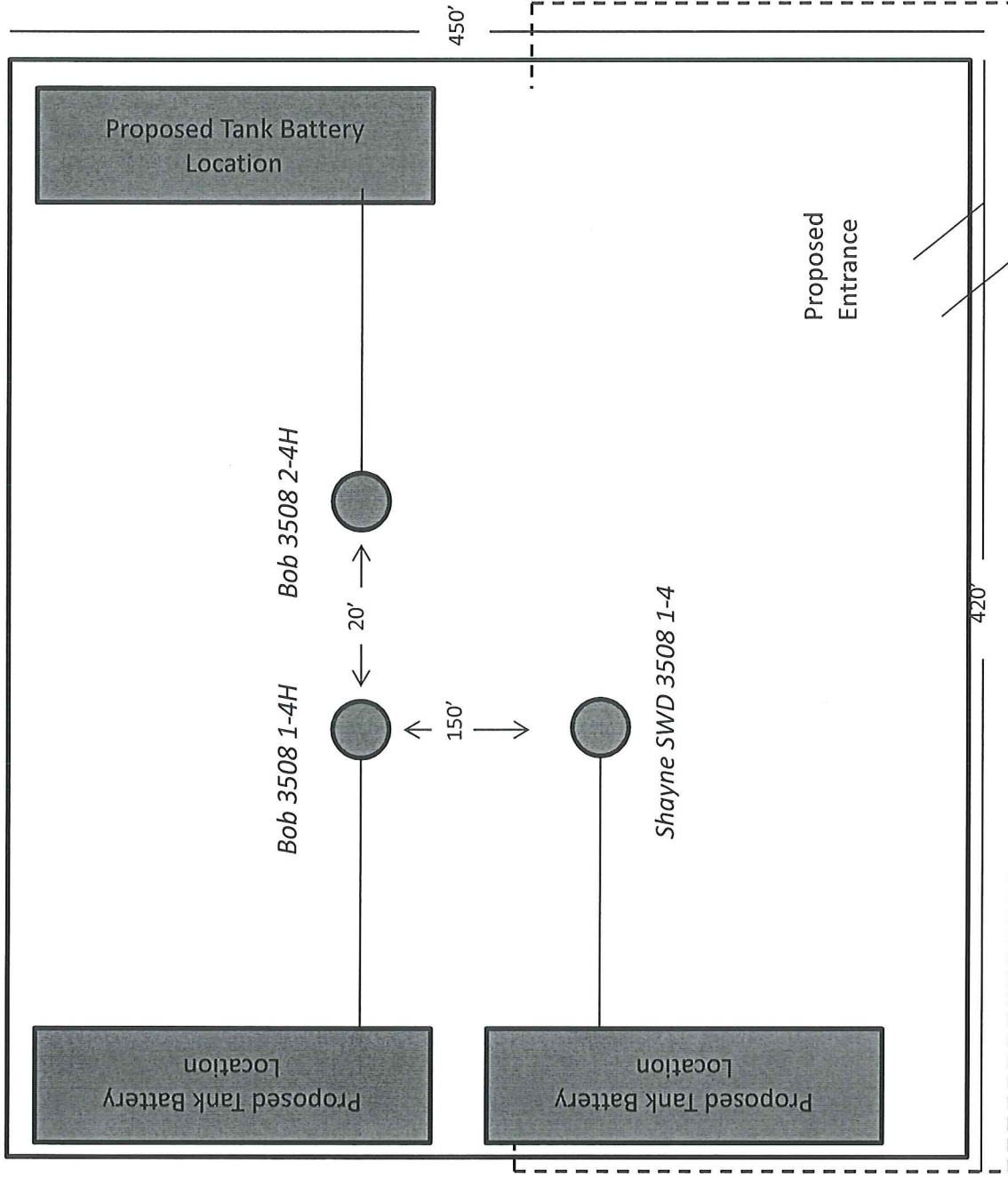
Surface Owner:

Rush Creek LLC
Larry Bob Jones and Myrna L Jones, Co-Managers
154 W State Rd2
Anthony, KS 67003

UNIT Plat



Bob 3508 1-4H & Bob 3508 2-4H & Shayne SWD 3508 1-4



Proposed Electric Line